

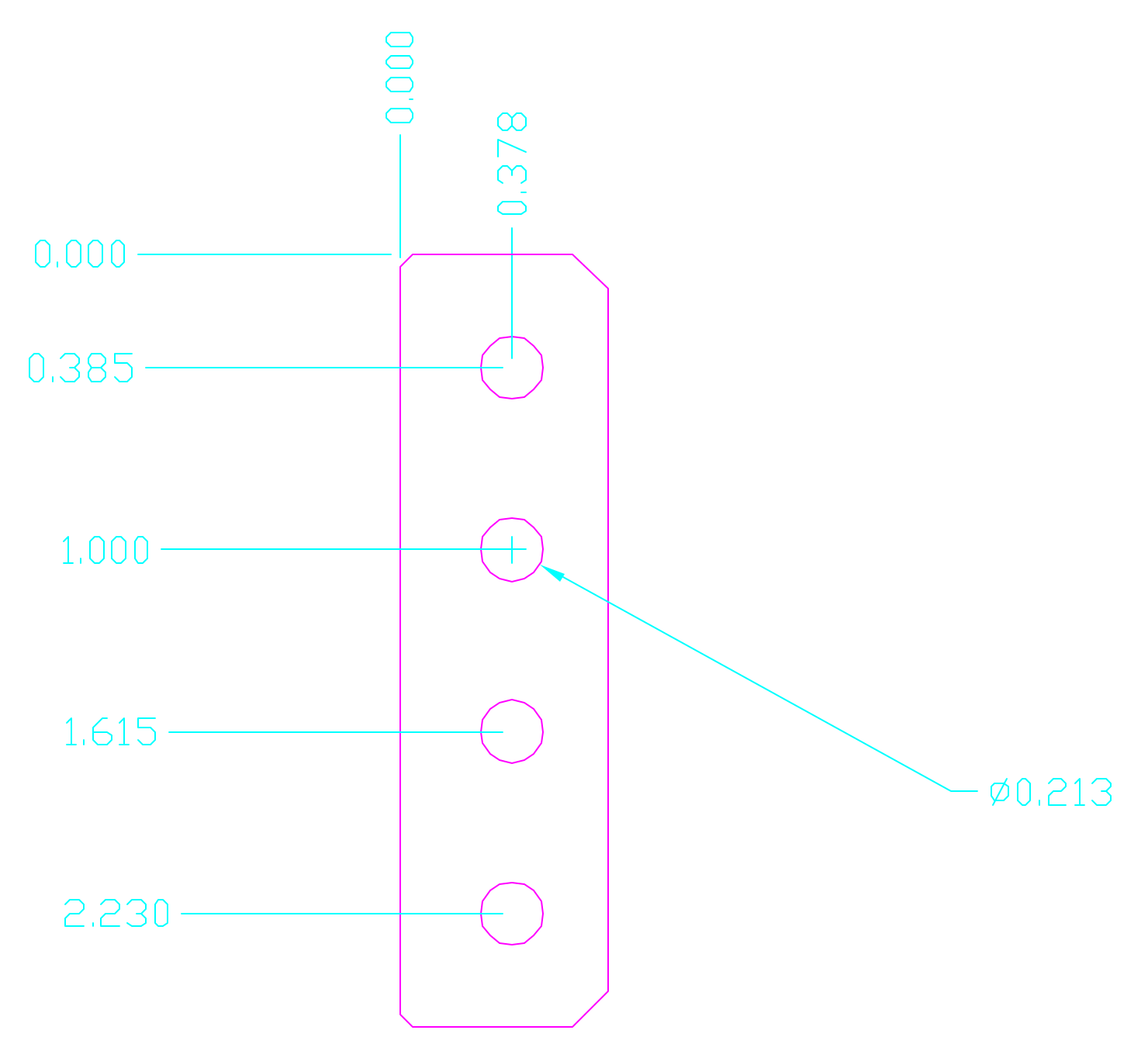
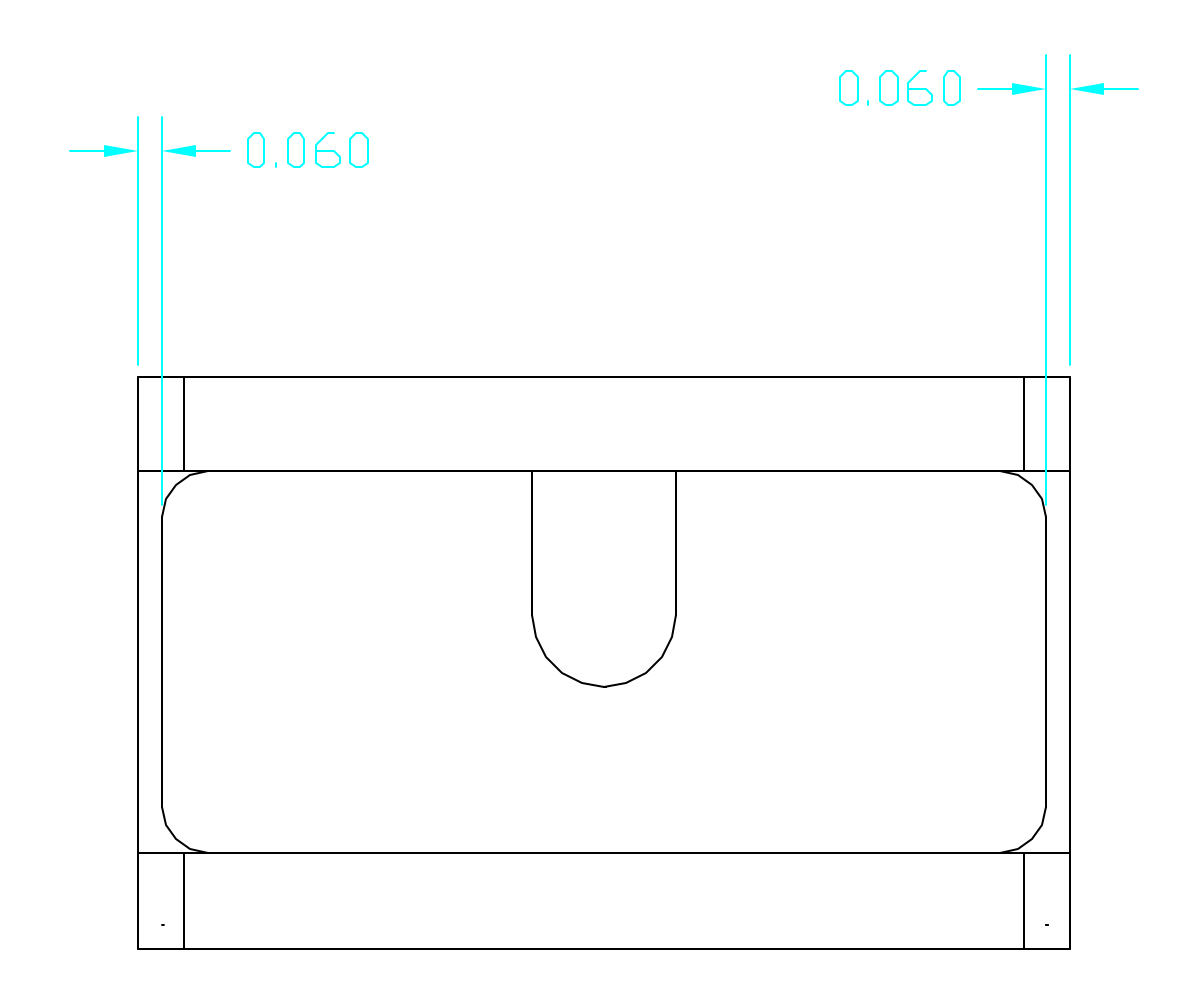
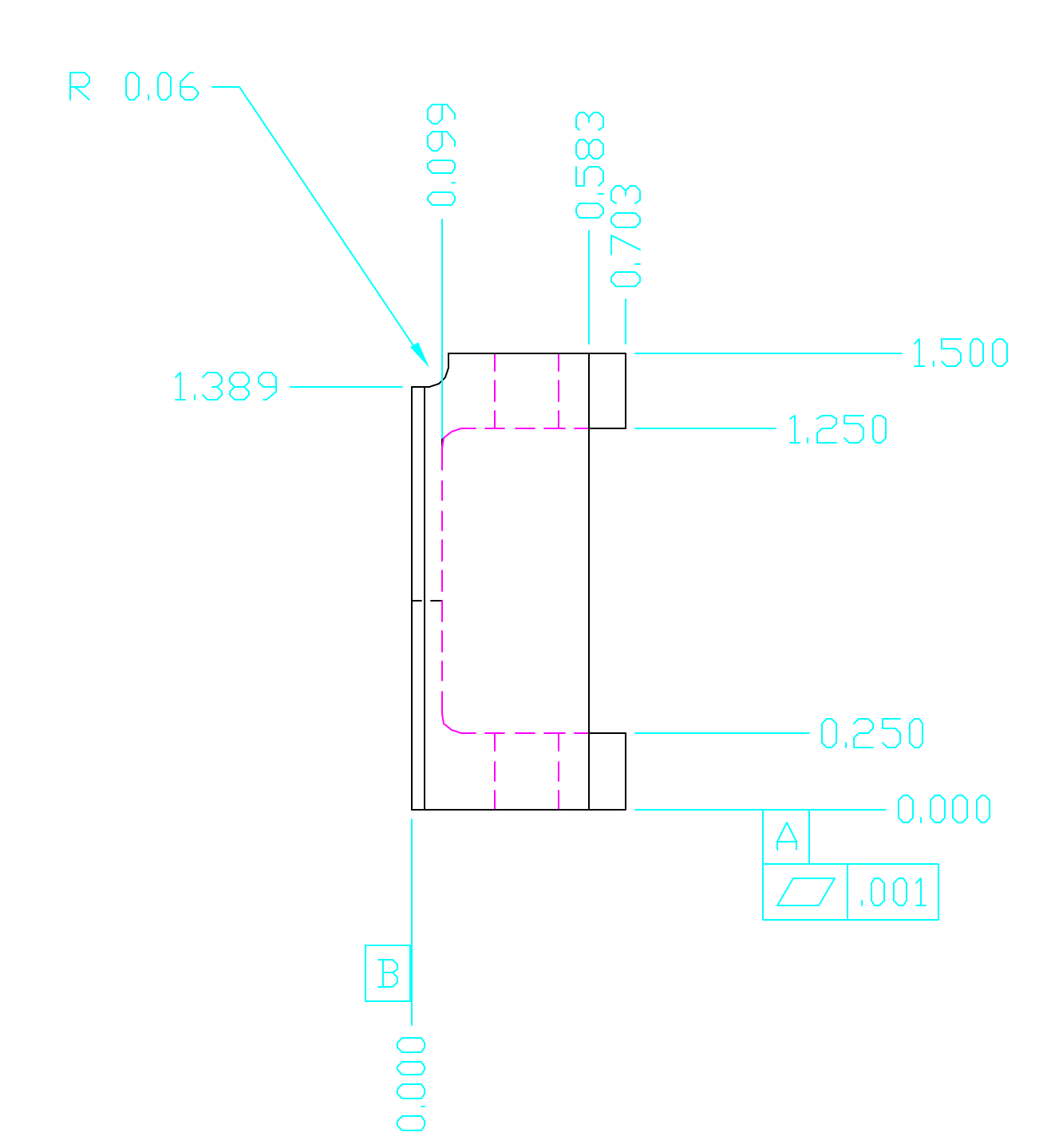
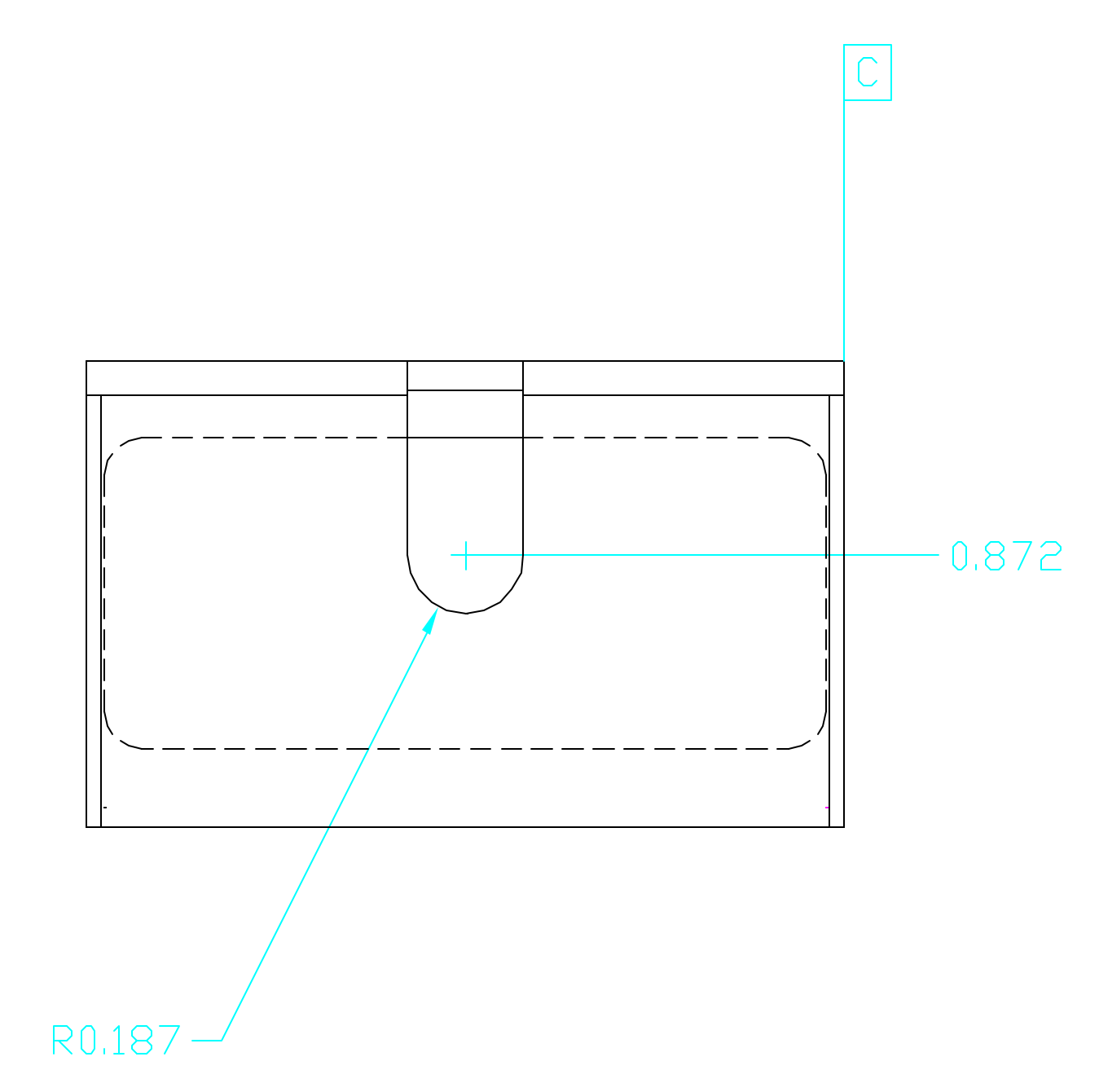
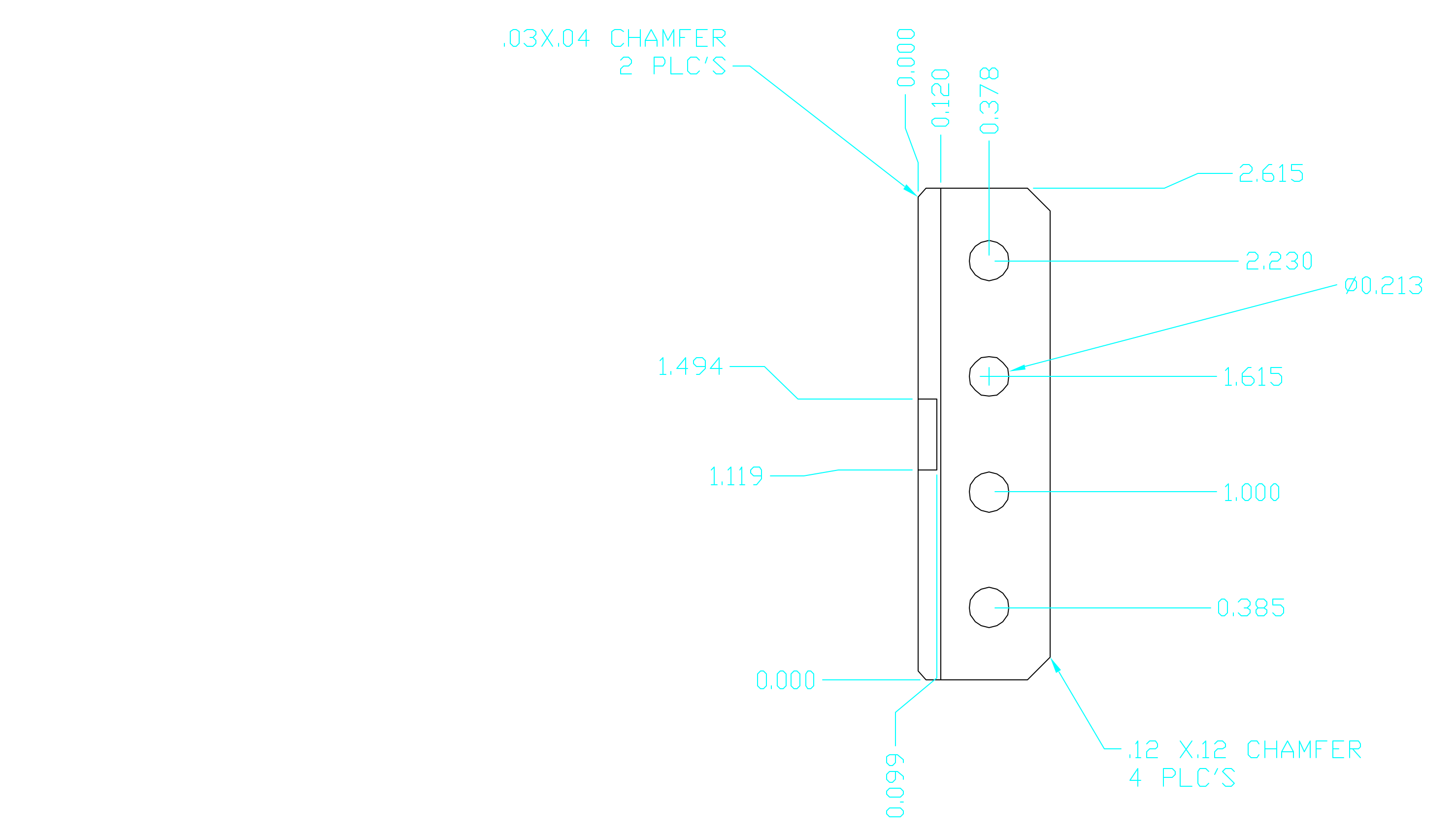
4

3

2

1

REVISIONS				
ECO	REV	DESCRIPTION	DATE	APPROVED
	01	INITIAL RELEASE		



50-10101.01 AS SHOWN  
 50-10101.02 OPPOSITE

- NOTES:
- PART NUMBERS 50-10101.01 AND 50-10101.02 ARE TO BE MADE AS A MATCHED SET. THE OVERALL HEIGHT OF 1.500 ±.003 MUST BE WITHIN .001 OF EACH OTHER. THE OVERALL FLATNESS AND PARALELLISM BETWEEN THE TWO TOP SURFACES MUST BE WITHIN ±.001.
  - DEBURR AND BREAK SHARP EDGES.
  - PARTS TO BE CLEAN AND FREE OF GREASE, OILS AND VISIBLE PARTICULATES.
  - BAG AND TAG AS A SERIALIZED MATCHED SET STARTING WITH S/N 001.

		UNLESS OTHERWISE SPECIFIED DIMENSIONS ARE IN INCHES TOLERANCE: ANGLES +/- 1° 3 PLACE DECIMALS +/- .005 2 PLACE DECIMALS +/- .01	NAME		DATE	Massachusetts Institute of Technology Center for Space Research CRATER				
			DRAWN		M. SMITH					
			CHECKED							
			APPROVED							
30-XXXXX		ASTRO-E2	MATERIAL		RELEASED					
NEXT ASSEMBLY		USED ON	TORLON, 30% GLASS REINFORCED 4xG		FINISH		SIZE	FSCM NO.	DWG NO.	REV
APPLICATION					XXXXXXX_rA		C	80230	50-10101	01
						SCALE	1:1	SHEET		1 OF 1

4

3

2

1