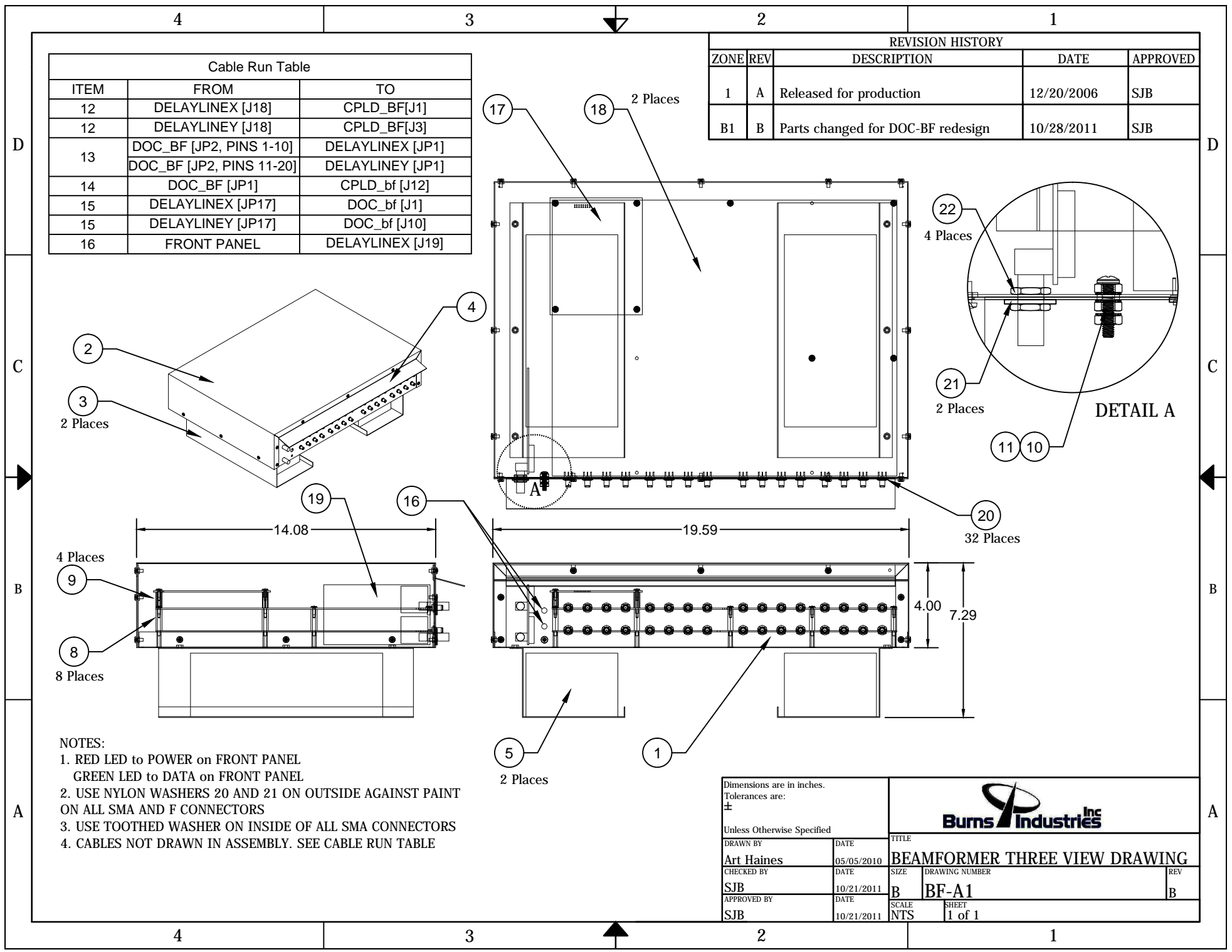


Cable Run Table		
ITEM	FROM	TO
12	DELAYLINEX [J18]	CPLD_BF[J1]
12	DELAYLINEX [J18]	CPLD_BF[J3]
13	DOC_BF [JP2, PINS 1-10]	DELAYLINEX [JP1]
	DOC_BF [JP2, PINS 11-20]	DELAYLINEX [JP1]
14	DOC_BF [JP1]	CPLD_bf [J12]
15	DELAYLINEX [JP17]	DOC_bf [J1]
15	DELAYLINEX [JP17]	DOC_bf [J10]
16	FRONT PANEL	DELAYLINEX [J19]

REVISION HISTORY				
ZONE	REV	DESCRIPTION	DATE	APPROVED
1	A	Released for production	12/20/2006	SJB
B1	B	Parts changed for DOC-BF redesign	10/28/2011	SJB



NOTES:

- RED LED to POWER on FRONT PANEL  
GREEN LED to DATA on FRONT PANEL
- USE NYLON WASHERS 20 AND 21 ON OUTSIDE AGAINST PAINT ON ALL SMA AND F CONNECTORS
- USE TOOTHED WASHER ON INSIDE OF ALL SMA CONNECTORS
- CABLES NOT DRAWN IN ASSEMBLY. SEE CABLE RUN TABLE

Dimensions are in inches.  
Tolerances are:  
±

Unless Otherwise Specified

DRAWN BY <b>Art Haines</b>	DATE 05/05/2010	TITLE <b>BEAMFORMER THREE VIEW DRAWING</b>	
CHECKED BY <b>SJB</b>	DATE 10/21/2011	SIZE <b>B</b>	DRAWING NUMBER <b>BF-A1</b>
APPROVED BY <b>SJB</b>	DATE 10/21/2011	SCALE <b>NTS</b>	REV <b>B</b>
		SHEET <b>1 of 1</b>	

