

CABLE DRAWING: **CAB-0XXX (SALEM CODE)**

DRAWING TITLE:  
**Power Supply DC Switch Cable**

DRAWING NO.: <b>MWACAB-0026</b>	DRAWN BY: <b>DRC</b>	DATE: 18-Dec-09	REV: <b>A</b>
		SHEET: 1 of 2	

**Cable Detail:**

Connectors:	Description	Parts (Qty)
PSU-DCS-S	TYCO/AMP - 102241-1 Crimp Housing, 3Way	See Note1 Below(1)
PSU-DCS-P	TYCO/AMP - 87667-5 - Crimp Socket, 26-22AWG	See Note2 Below(3)
Conductors:	PTFE-26AWG-BLACK, 7/0.15 strands, 4A	See Note3 Below(?)

Overall Length ??+/-5mm

**Notes:**

1. The Housing can be supplied from Farnell #182-2573. Any equivalent will be OK refer to data sheets supplied with this drawing.
2. The Housing Pins can be supplied from Farnell #973-294. Any equivalent will be OK, but must match the housing refer to data sheets supplied with this drawing.
3. The wire can be supplied from Farnell #118-4006 or PSI # PC-0071. Any equivalent will be OK, but must match the housing refer to data sheets supplied with this drawing.

**Typical Drawing:**



**Tyco/Amp  
87667-5  
Farnell# 973-294**

**Tyco/AMP  
102241-1  
Farnell#182-2573**

**Connection Table:**

PSU-DCS	Description	DC Switch
Pins(3)		Pins(3)
1	+5mcc	1
2	NO	2
3	LED K	3

**REVISION**

Date	Rev	Remarks
18/12/09	A	Draft

CABLE DRAWING: **CAB-0XXX (SALEM CODE)**

DRAWING TITLE:  
**Power Supply DC Switch Cable**

DRAWING NO.: <b>MWACAB-0026</b>	DRAWN BY: <b>DRC</b>	DATE: 18-Dec-09	REV: <b>A</b>
		SHEET: 2 of 2	

**Assembly Details:**

**CRIMPING & STRIPPING**

**Wire Preparation**

The wire must be stripped to the dimension provided in Figure 2.

*Do not nick, scrape, or cut the wire conductor during the stripping operation.*

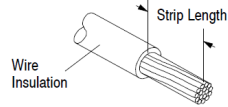
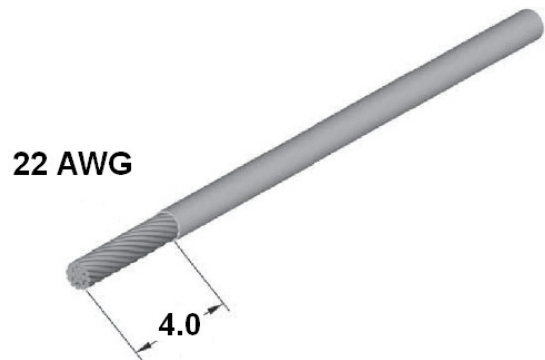


Figure 2

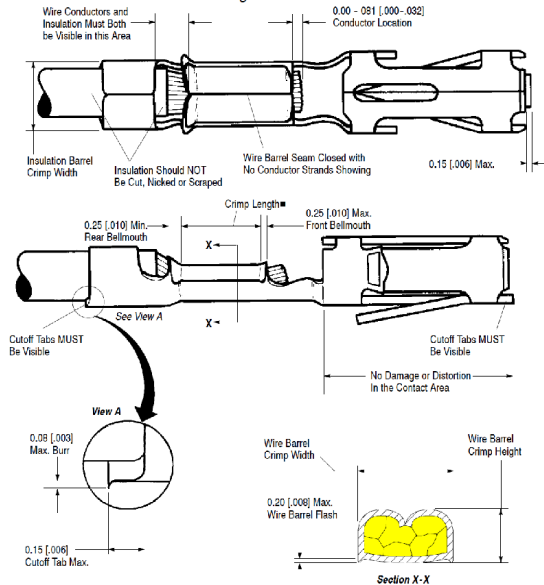
WIRE SIZE RANGE, (AWG)	INSUL DIA MAX.	STRIP LENGTH	WIRE BARREL		INSUL BARREL CRIMP WIDTH
			CRIMP HEIGHT	CRIMP WIDTH	
20	•	4.78-3.58	0.94-0.72	1.4	1.57
22	•	4.78-3.58	0.84-0.72		
24	•	4.78-3.58	0.83-0.64		
22	1.55	4.37-2.77	0.97-0.81	1.07	
24	1.55	4.37-2.77	0.86-0.71		
26	1.55	4.37-2.77	0.81-0.71		
26-30	1.22	4.37-2.77	0.74-0.64	1.4	1.4
27, 28	1.02	4.37-2.77	0.61-0.51	0.84	
30, 32	1.02	4.37-2.77	0.61-0.48		



**Crimp Length**

For optimum crimp effectiveness, the crimp must be within the area shown and must meet the crimp dimensions provided in Figure 3. Effective crimp length shall be defined as that portion of the wire barrel, excluding bellmouth(s), fully formed by the crimping tool.

Figure 3



**NOTE:** Comparing a crimped contact to an uncrimped contact should reveal any fault that may have occurred to front shoulder or locking lances during crimping.

- Effective crimp length shall be 2.67 mm minimum for 20-24 AWG wire, and 2.16 mm minimum for all other wire sizes; and is defined as that portion of the wire barrel fully formed by the tool, excluding the bellmouths.

**Connection Detail:**

From: (PSU-DCS)  
Attached to the PSU DCS connector  
To: (DC Switch)  
Attach to the DC Switch Pins

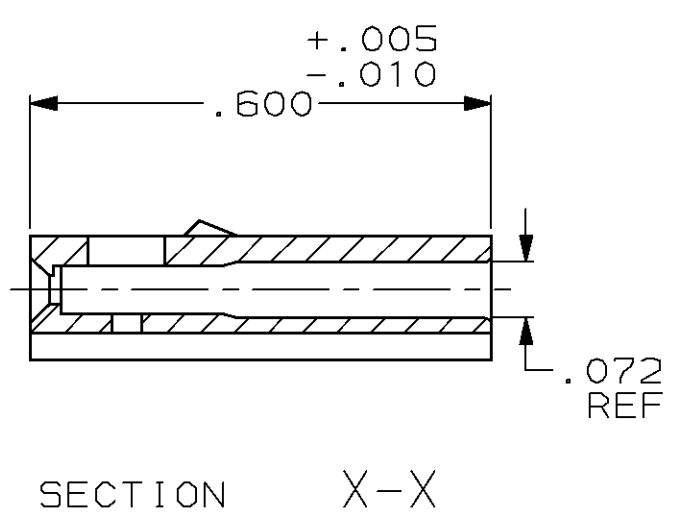
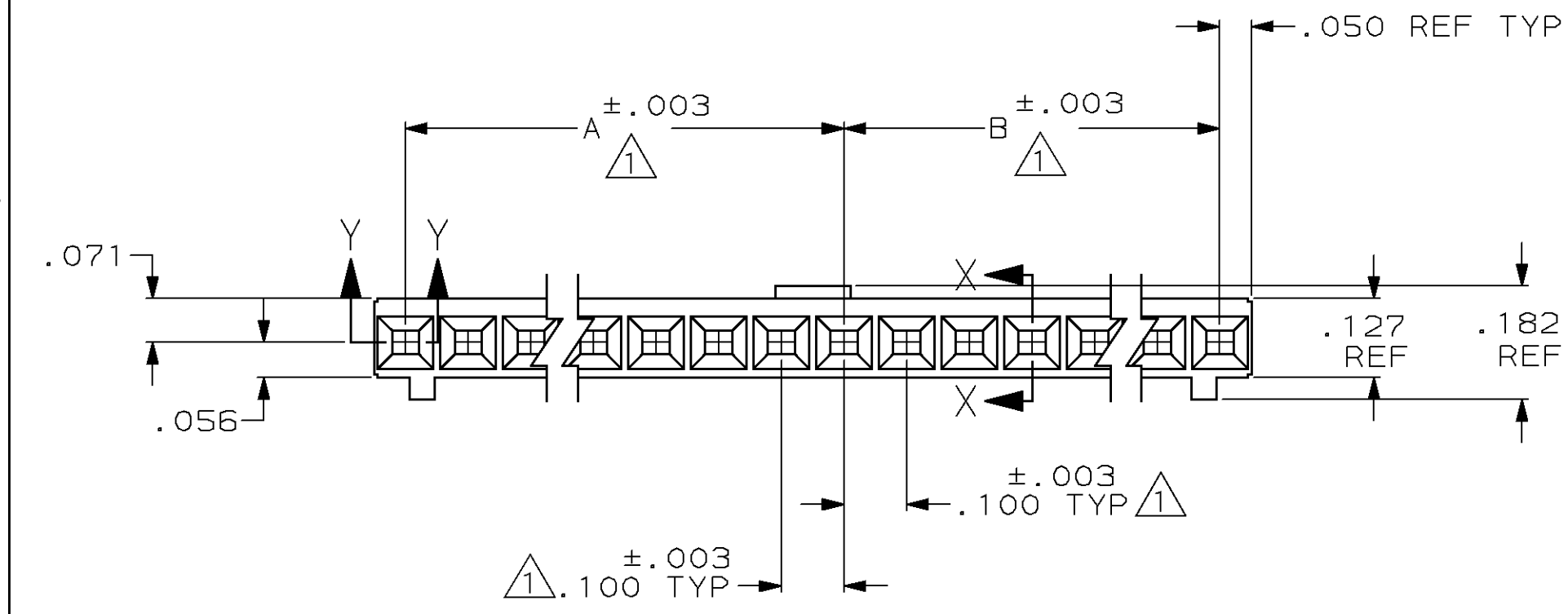
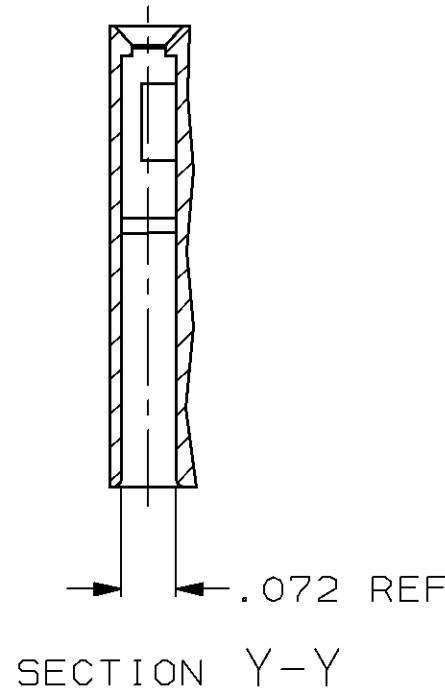
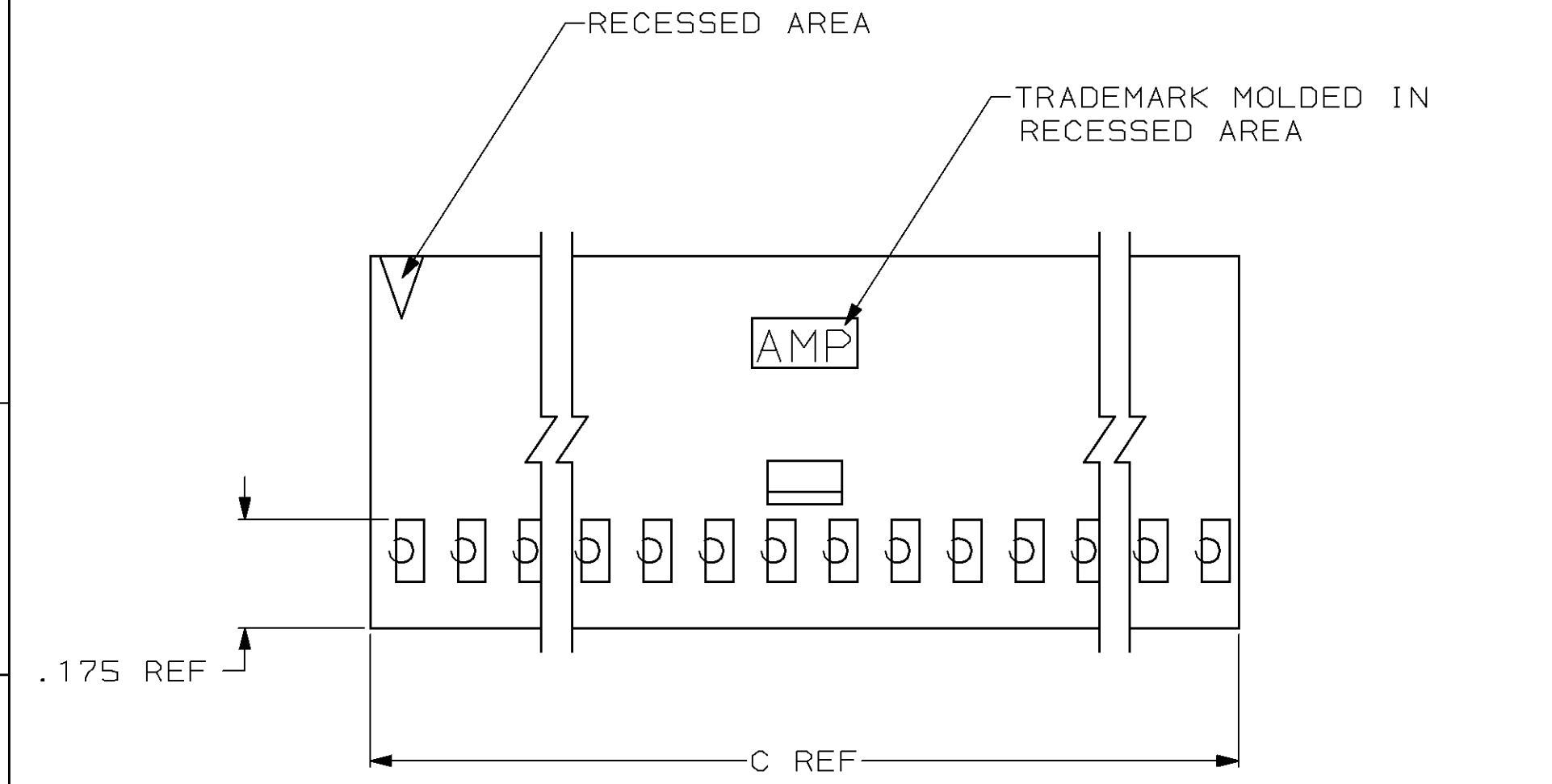
**REVISION**

Date	Rev	Remarks
18/12/09	A	Draft

THIS DRAWING IS UNPUBLISHED. RELEASED FOR PUBLICATION, 19 .  
 © COPYRIGHT 19 BY AMP INCORPORATED. ALL INTERNATIONAL RIGHTS RESERVED.

LOC AD DIST 39

REVISIONS				
ZONE	LTR	DESCRIPTION	DATE	APPD
C		REV LOC & DIST AD-4171	3-90	BF
D		OBS PER 0010-0743-93	9/14/93	PS
E		OBS PER 0010-1031-93	12-7-93	PS
F		OBS PER 0010-1049-93	12-7-93	PS
G		REACT. -11 PER 0010-1231-94	8-23-94	PS
H		REACT. -26 PER 0010-1273-94	8-23-94	PS
J		REV PER 0010-0641-95	5-18-95	PS
K		REV PER 0010-0187-95	1-24-96	SAS
L		REV PER 0310-0074-97	3-5-97	JS
M		REV PER 0310-0484-97	2-6-98	BS



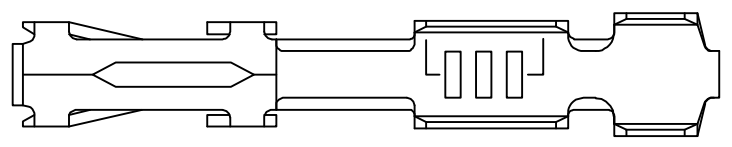
3.600	1.700	1.800	36	3-102241-4
3.500	1.700	1.700	35	3-102241-3
3.400	1.600	1.700	34	3-102241-2
3.300	1.600	1.600	33	3-102241-1
3.200	1.500	1.600	32	3-102241-0
3.100	1.500	1.500	31	2-102241-9
3.000	1.400	1.500	30	2-102241-8
2.900	1.400	1.400	29	2-102241-7
2.800	1.300	1.400	28	2-102241-6
2.700	1.300	1.300	27	2-102241-5
2.600	1.200	1.300	26	2-102241-4
2.500	1.200	1.200	25	2-102241-3
2.400	1.100	1.200	24	2-102241-2
2.300	1.100	1.100	23	2-102241-1
2.200	1.000	1.100	22	2-102241-0
2.100	1.000	1.000	21	1-102241-9
2.000	.900	1.000	20	1-102241-8
1.900	.900	.900	19	1-102241-7
1.800	.800	.900	18	1-102241-6
1.700	.800	.800	17	1-102241-5
1.600	.700	.800	16	1-102241-4
1.500	.700	.700	15	1-102241-3
1.400	.600	.700	14	1-102241-2
1.300	.600	.600	13	1-102241-1
1.200	.500	.600	12	1-102241-0
1.100	.500	.500	11	102241-9
1.000	.400	.500	10	102241-8
.900	.400	.400	9	102241-7
.800	.300	.400	8	102241-6
.700	.300	.300	7	102241-5
.600	.200	.300	6	102241-4
.500	.200	.200	5	102241-3
.400	.100	.200	4	102241-2
.300	.100	.100	3	102241-1

- ① CAVITY LOCATION DIMENSIONS INCREASE IN INCREMENTS OF .100 TOLERANCE NON-CUMULATIVE
- ② USE EXTRACTION TOOL 91052-1 TO REMOVE RECEPTACLE CONTACTS
- ③ OBSOLETE PART NUMBER

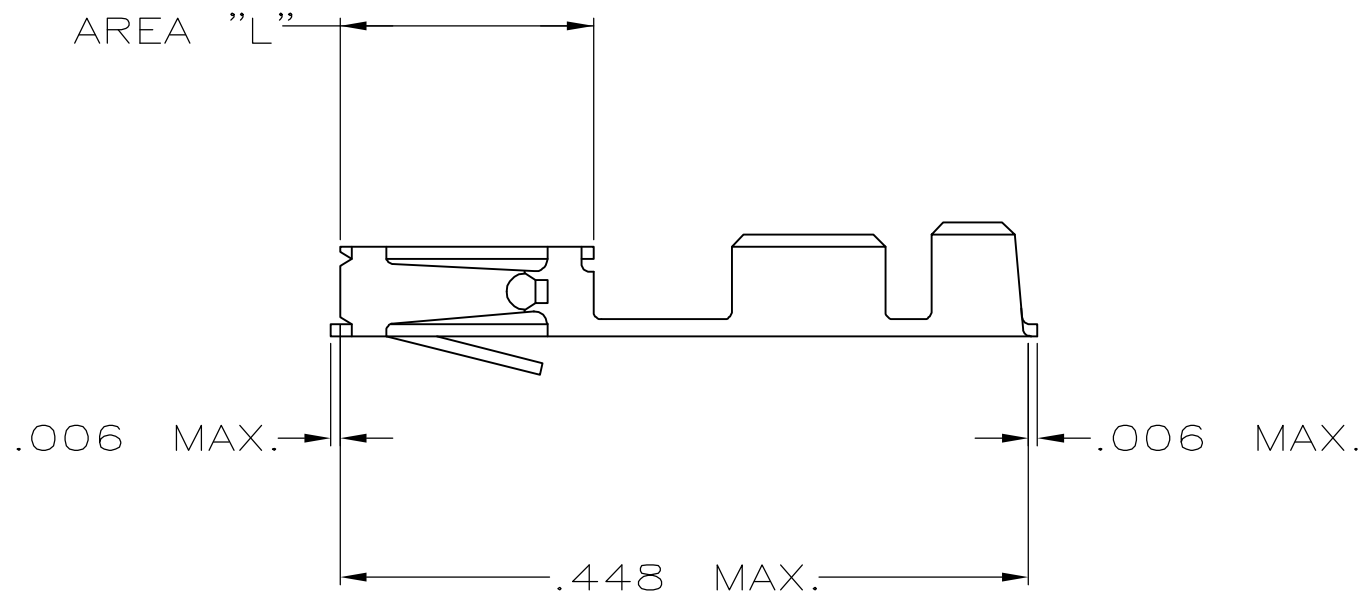
DO NOT SCALE PRINT. UNLESS SPECIFIED DIMENSIONS IN INCHES TOLERANCES ON :		PART NO	
2 PLC DEC ± -	3 PLC DEC ± .005	AMP INCORPORATED Harrisburg, Pa. 17105	
ANGLES ± -		NAME CONN HOUSING, CRIMP SNAP-IN MOD IV, SINGLE ROW, .100 CENTERS, WITH POLARIZATION & DETENTS	
MATERIAL FLAME RETARDANT GLASS FILLED NYLON COLOR: BLACK	FINISH -	SIZE <b>C</b>	FSCM NO 00779
		DRAWING NO 102241	
		SCALE -	SHEET 1 OF 1

THIS DRAWING IS UNPUBLISHED. RELEASED FOR PUBLICATION  
 © COPYRIGHT - BY TYCO ELECTRONICS CORPORATION. ALL RIGHTS RESERVED.

LOC	DIST	REVISIONS					
AD	00	P	LTR	DESCRIPTION	DATE	DWN	APVD
			B	RELEASED	-	-	-



1. LOOSE PIECE TERMINAL MUST MEET ALL APPLICABLE STRIP SPECIFICATIONS IN ADDITION TO THOSE SHOWN.
2. .000030 MIN. GOLD OVER .000050-.000100 NICKEL.
3. GOLD FLASH OVER .000050-.000100 NICKEL  
.000030 GOLD ON CONTACT AREA.
4. PREPLATING: .000078-.000158 BRIGHT TIN (HALT)  
PER 112-20-6
5. .000050 GOLD OVER .000050-.000100 NICKEL.
6. GOLD FLASH OVER .000050-.000100 NICKEL  
.000015 GOLD ON CONTACT AREA.
7. GOLD FLASH ON AREA "L"  
.000050 GOLD ON CONTACT AREA.  
ALL OVER .000050-.000100 NICKEL ENTIRE CONTACT.



		-	-
OBSOLETE	7	1-87666-6	87667-6
	6	87666-5	87667-5
	5	87666-4	87667-4
	4	87666-3	87667-3
	3	87666-2	87667-2
	2	87666-1	87667-1
FINISH		MAKE FROM STRIP PART NO.	PART NUMBER

THIS DRAWING IS A CONTROLLED DOCUMENT.		DWN M.BINNER 27JUN06	Tyco Electronics Corporation Harrisburg, PA 17105-3608			
DIMENSIONS: INCHES		CHK D.ROHDE 27JUN06				
TOLERANCES UNLESS OTHERWISE SPECIFIED:		APVD D.ROHDE 27JUN06	NAME CONTACT, FEMALE, MOD IV, CRIMP SNAP-IN (LOOSE PIECE)			
0 PLC ± - 1 PLC ± - 2 PLC ± .02 3 PLC ± .005 4 PLC ± .0005 ANGLES ± 0'30"		PRODUCT SPEC -	APPLICATION SPEC -			
MATERIAL SEE TABLE	FINISH SEE TABLE	WEIGHT -	SIZE A3	CAGE CODE 00779	DRAWING NO C-87667	RESTRICTED TO -
CUSTOMER DRAWING			SCALE 8:1	SHEET 1 OF 1	REV B	