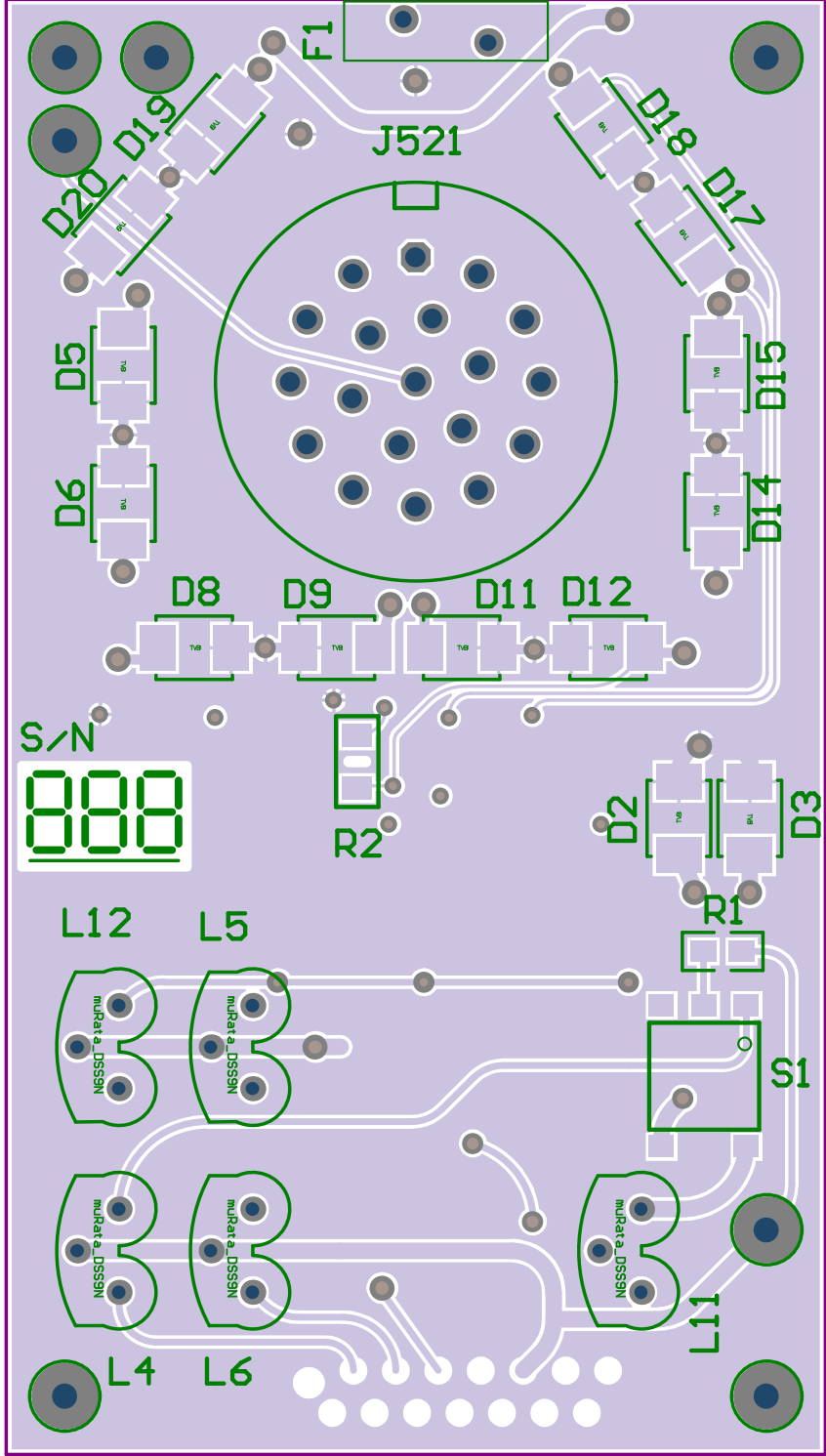
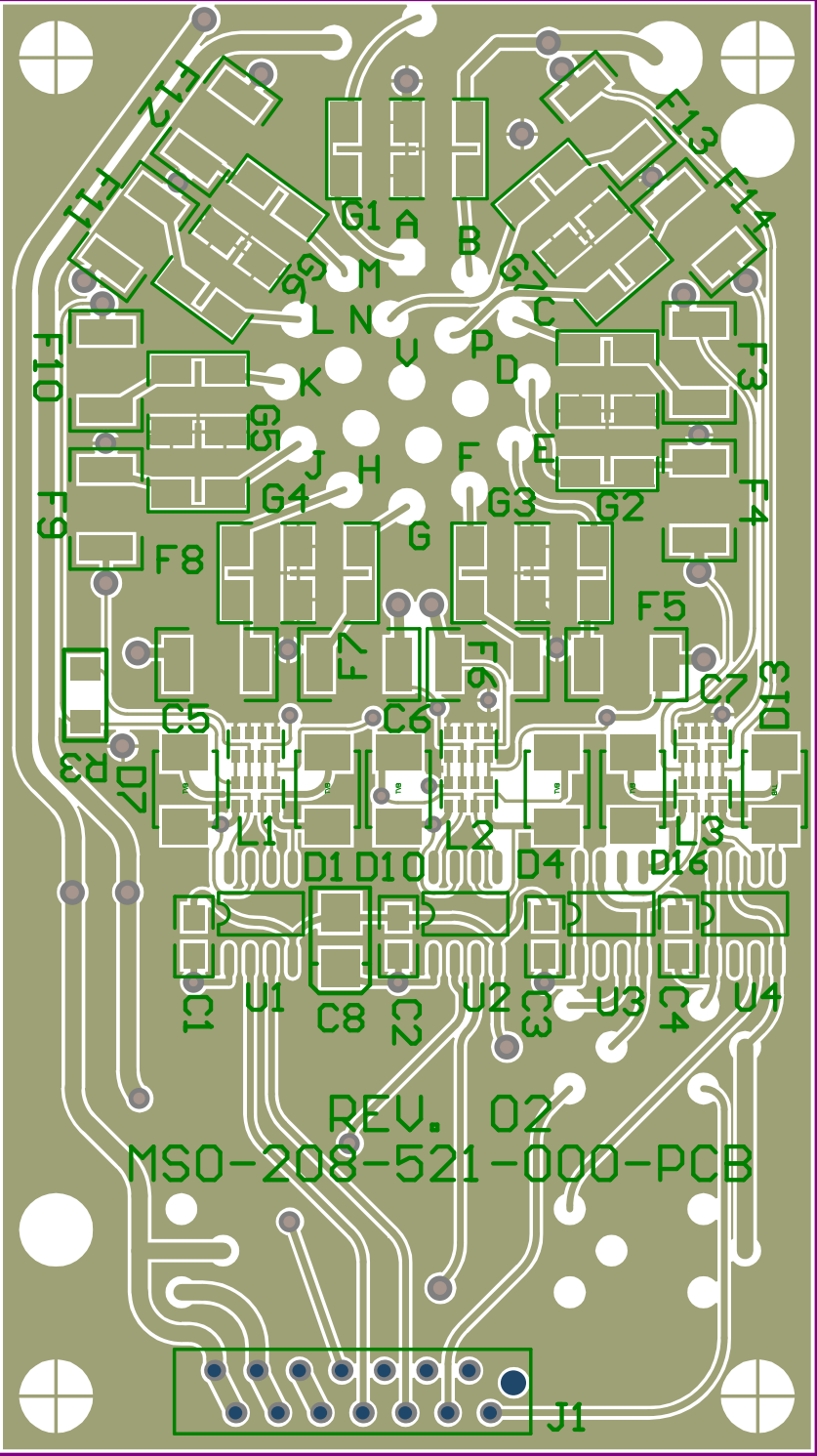


X4.0 configuration:
 S1 replaced with MSO-208-521-200-PCB
 F2 replaced with wire link
 F1 replaced with Bourns MF-RX135/72-D (Farnell 9350136 or 1682587)
 T1&2 not installed

RV/PV Date Eng Revision Details
 01/01_23Jan08_EK L7-10 increased cutoff freq. U1C,U2B,U2C,U3B RS422 signals reversed
 02/02_29Apr08_EK S1 is replaced with a daughterboard containing a MosFET SSR

Project: Murchison Widefield Array - LF Demonstration		Australian National University Research School of Astronomy and Astrophysics Mount Stromlo Observatory Catter Road	
Title: Antenna Tile Interface		Weston ICT 2611 www.mso.anu.edu.au	
Number: MSO-208-521-000-SCH	Revision: 03		
PCB No.: MSO-208-521-000-PCB	Print Date: 19/10/2009		
1st Eng.: E Kowald	2nd Eng.: M Watson	Date Drawn: 11Oct07	
File: C:\SVN\ee\MWA-AD9521_ATIF\521_ATIF_SchDoc			

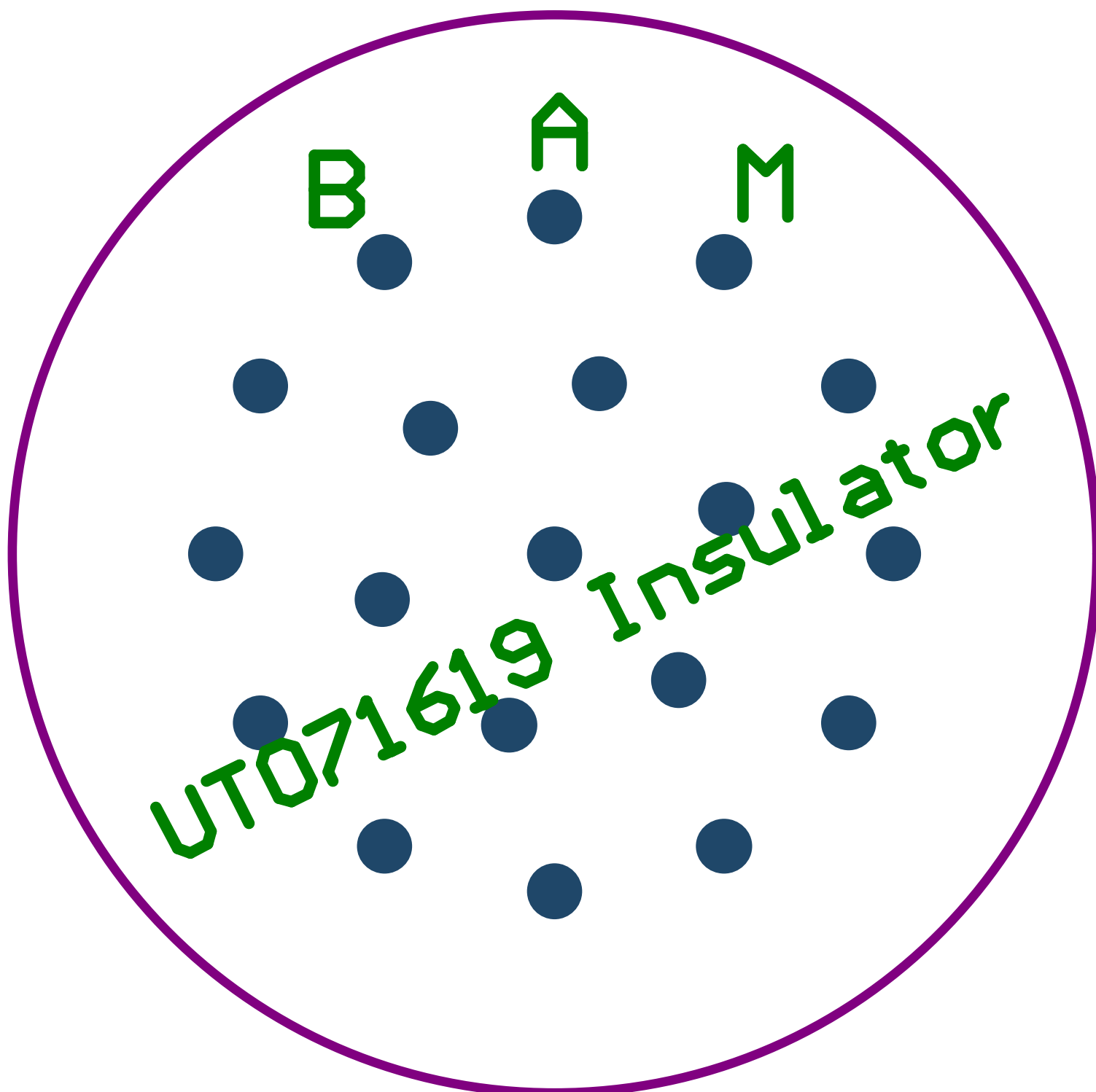




REV. 02

MS0-208-521-000-PCB

J1



B

A

M

UT071619 Insulator