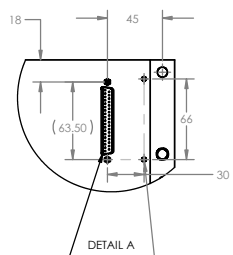
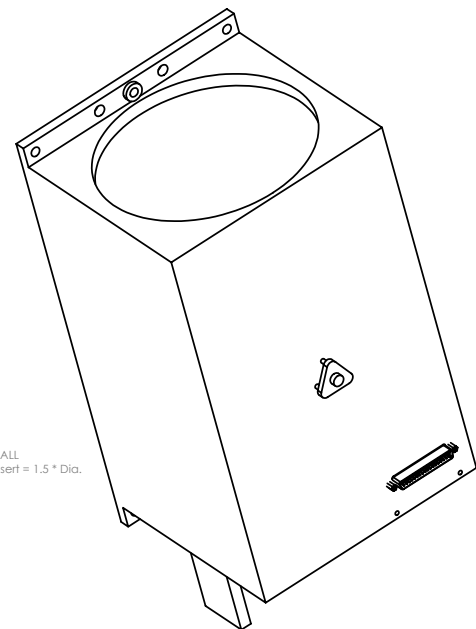
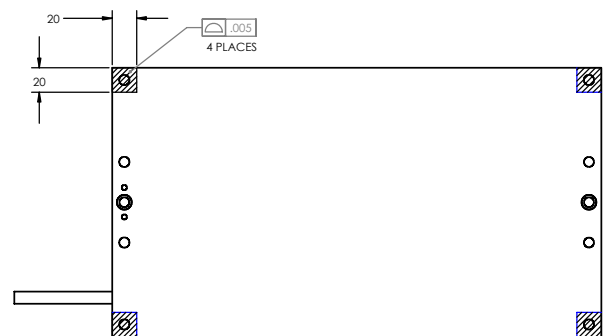
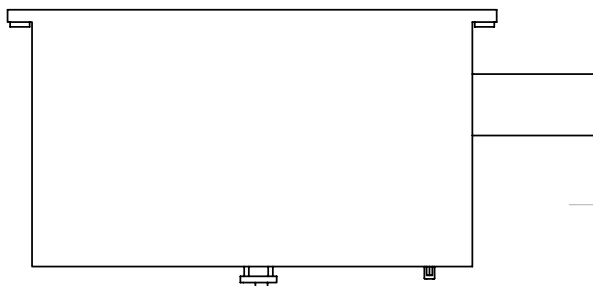


REVISIONS			DATE	APPROVED
ZONE	REV.	DESCRIPTION		

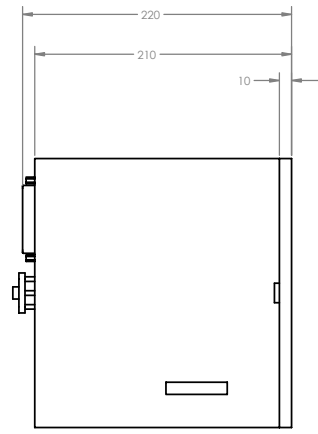
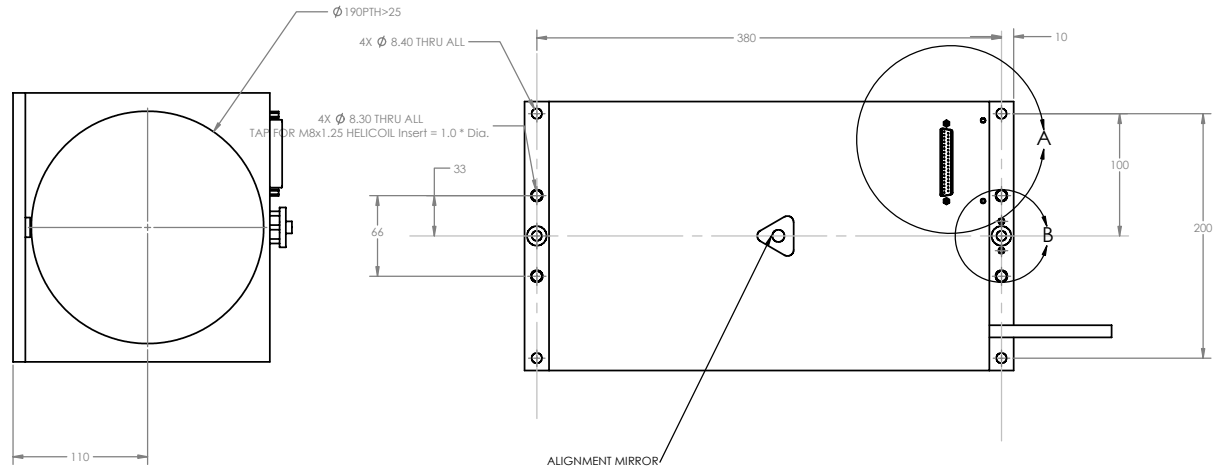
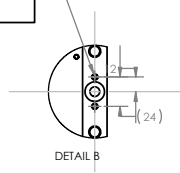


PIN 1
37 PIN D-SUBMINIATURE CONNECTOR

ϕ 3.15 ∇ 9.08
TAP FOR M3x0.5 HELICOIL Insert = 1.5 * Dia.



2X ϕ 4.20 THRU ALL
TAP FOR M4x0.7 HELICOIL Insert = 1.5 * Dia.



PROPRIETARY AND CONFIDENTIAL
THE INFORMATION CONTAINED IN THIS DRAWING IS THE SOLE PROPERTY OF HUSCO COMPANY TRADE SECS. AND HUSCO COMPANY TRADE SECS. ALL RIGHTS RESERVED. NO PART OF THIS DRAWING IS TO BE REPRODUCED OR TRANSMITTED IN ANY FORM OR BY ANY MEANS WITHOUT THE WRITTEN PERMISSION OF HUSCO COMPANY TRADE SECS. IS PROHIBITED.

UNLESS OTHERWISE SPECIFIED:		NAME	DATE
DIMENSIONS ARE IN	INCHES	DRAWN	
TOLERANCES		CHECKED	
FRACTIONS		TRIP APPR.	
PIPING PLACE SECTORS		WEG APPR.	
THREE PLACE DECIMALS		D.A.	
INHERENT GEOMETRIC TOLERANCING PER:		COMMENTS	
ISO 15473			
NEXT ASSY	USED ON	FRAG	
APPLICATION			

TITLE:
LONG TELESCOPE LAYOUT
SIZE DWG. NO. REV
D 43-03003.11 02
SCALE: 1:2 WEIGHT: SHEET 1 OF 1

LONG TELESCOPE