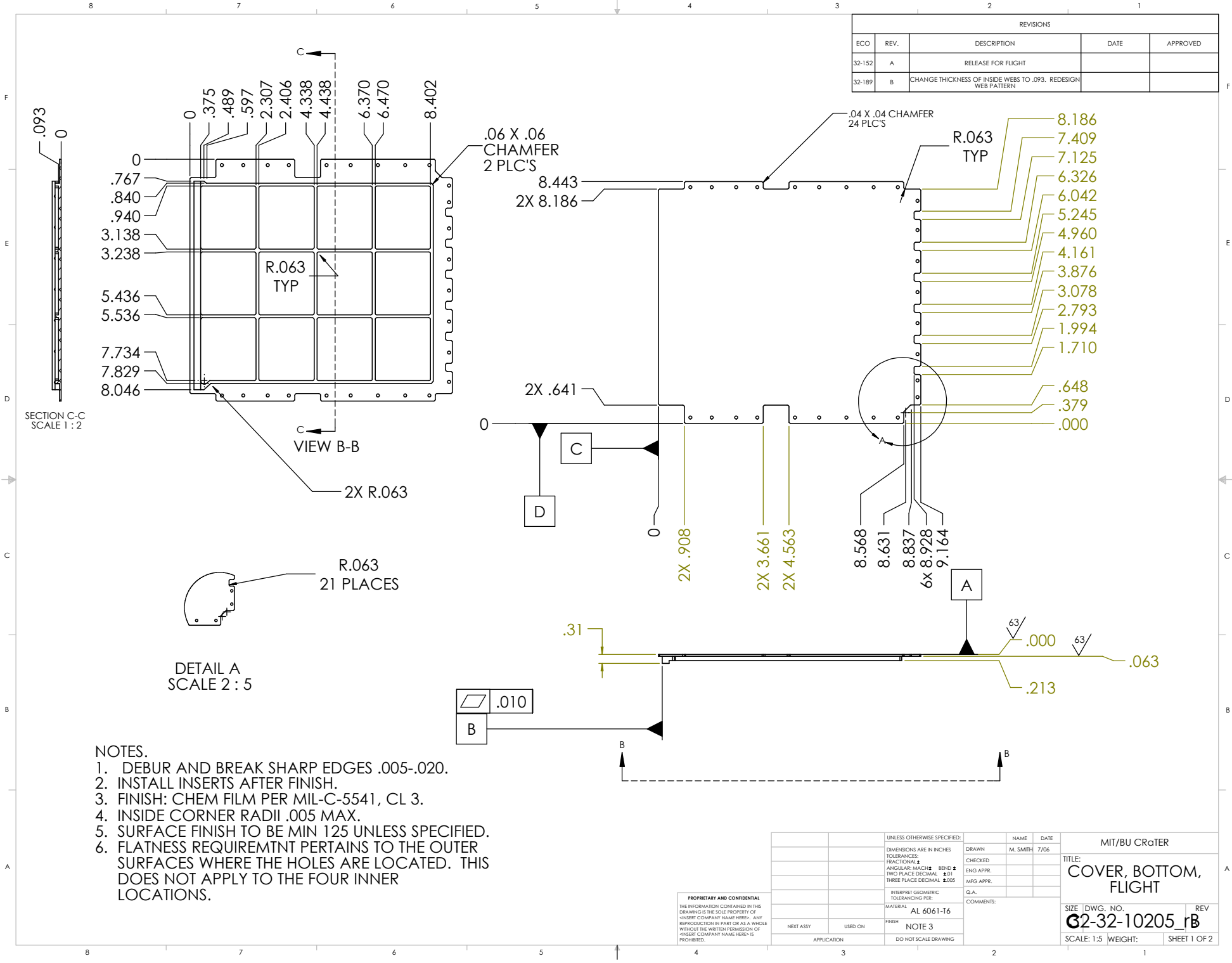


REVISIONS				
ECO	REV.	DESCRIPTION	DATE	APPROVED
32-152	A	RELEASE FOR FLIGHT		
32-189	B	CHANGE THICKNESS OF INSIDE WEBS TO .093. REDESIGN WEB PATTERN		



NOTES.

1. DEBUR AND BREAK SHARP EDGES .005-.020.
2. INSTALL INSERTS AFTER FINISH.
3. FINISH: CHEM FILM PER MIL-C-5541, CL 3.
4. INSIDE CORNER RADII .005 MAX.
5. SURFACE FINISH TO BE MIN 125 UNLESS SPECIFIED.
6. FLATNESS REQUIREMENT PERTAINS TO THE OUTER SURFACES WHERE THE HOLES ARE LOCATED. THIS DOES NOT APPLY TO THE FOUR INNER LOCATIONS.

PROPRIETARY AND CONFIDENTIAL
 THE INFORMATION CONTAINED IN THIS DRAWING IS THE SOLE PROPERTY OF
 "INSERT COMPANY NAME HERE". ANY
 REPRODUCTION IN PART OR AS A WHOLE
 WITHOUT THE WRITTEN PERMISSION OF
 "INSERT COMPANY NAME HERE" IS
 PROHIBITED.

UNLESS OTHERWISE SPECIFIED:		NAME	DATE
DIMENSIONS ARE IN INCHES		DRAWN	M. SMITH
TOLERANCES:		CHECKED	7/06
FRACTIONAL ±		ENG APPR.	
ANGULAR ±		MFG APPR.	
HOLE ±		Q.A.	
TWO PLACE DECIMAL ±.01		COMMENTS:	
THREE PLACE DECIMAL ±.005			
INTERPRET GEOMETRIC TOLERANCING PER:			
MATERIAL:			
AL 6061-T6			
FINISH:			
NOTE 3			
NEXT ASSY	USED ON		
APPLICATION	DO NOT SCALE DRAWING		

MIT/BU CRATER	
TITLE: COVER, BOTTOM, FLIGHT	
SIZE DWG. NO.	REV
G2-32-10205_rB	
SCALE: 1:5	WEIGHT: SHEET 1 OF 2

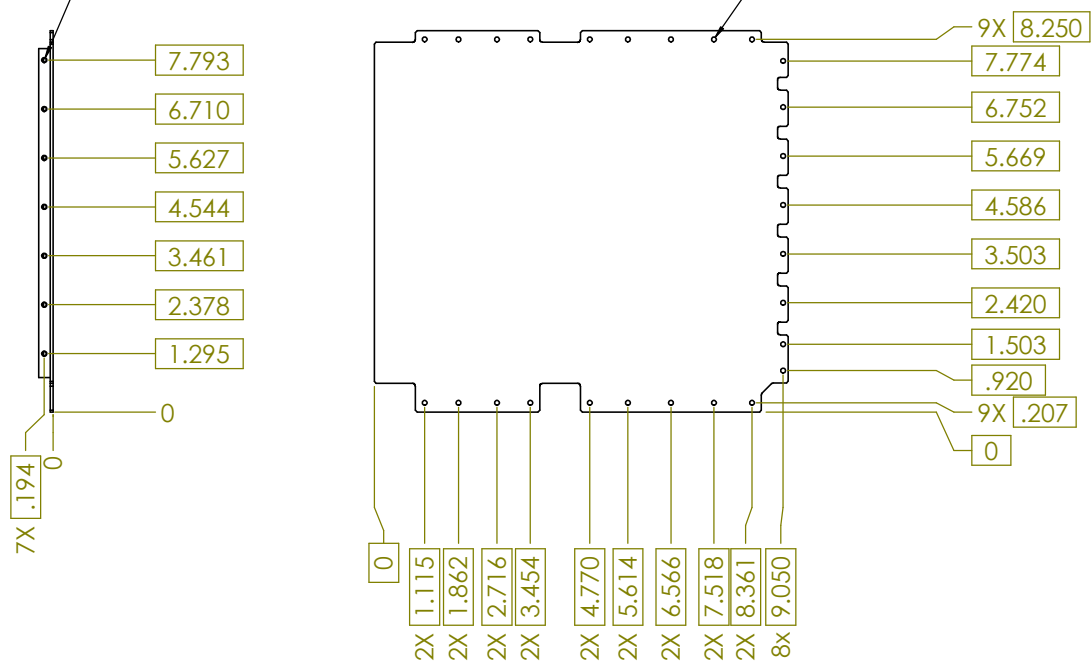
REVISIONS				
ZONE	REV.	DESCRIPTION	DATE	APPROVED
-	-	See Sheet1	-	-

7X ϕ .094 \pm .003 THRU, \sphericalangle ϕ .100 \pm .010 X 120° \pm 5°,
TAP FOR #2-56 HELICOIL Insert = 2.0 * Dia.

ϕ	.010	(M)	B	E	D
--------	------	-----	---	---	---

26 ϕ .107 THRU ALL

ϕ	.010	(M)	E	B	D
--------	------	-----	---	---	---



BU/MIT CRATER	
TITLE: COVER, BOTTOM, FLIGHT	
SIZE DWG. NO. C32-10205_rB	REV B
SCALE: 1:2 WEIGHT:	SHEET 2 OF 2