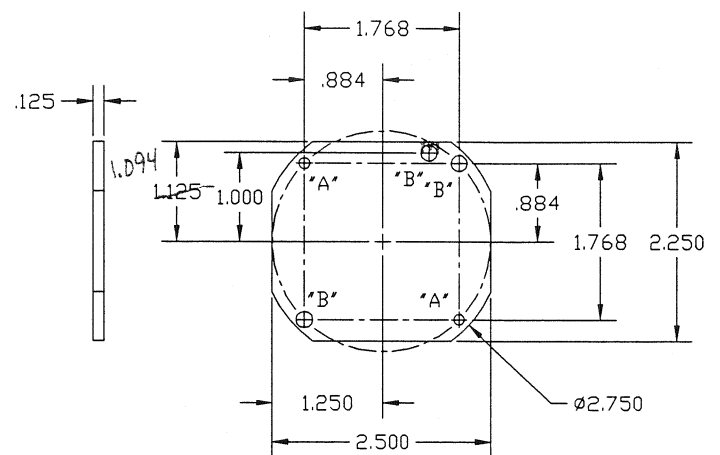
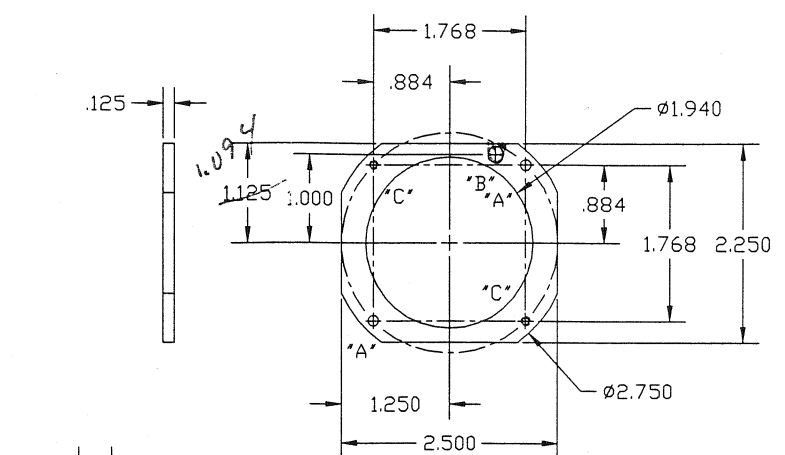


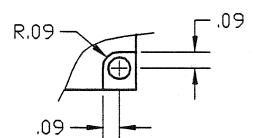
REVISIONS					
REV.	ECO NO.	DESCRIPTION	CHECKED	APPROVED	DATE
01	36-398	DWG NO. WAS 36-02405			
A					



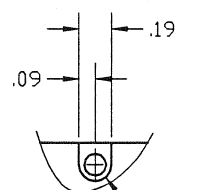
36-02405-3



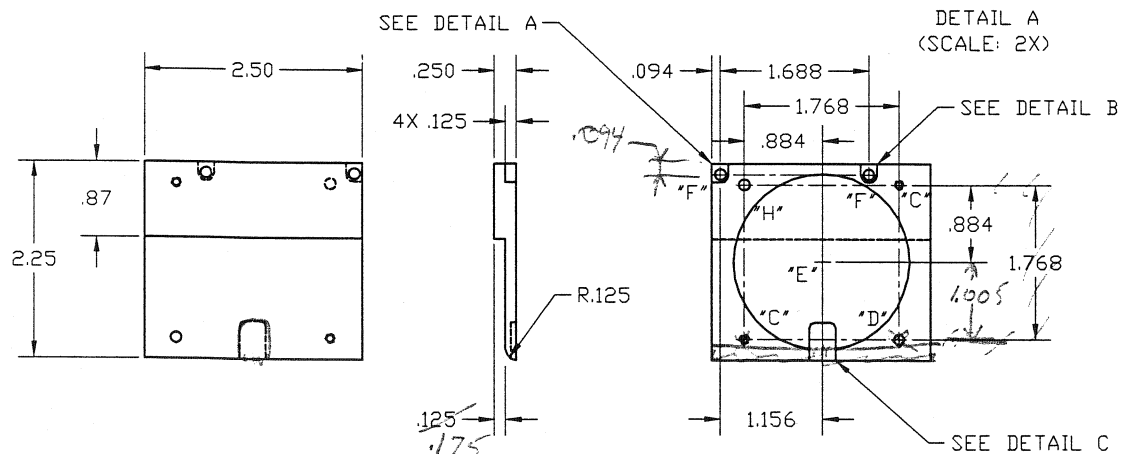
36-02405-2



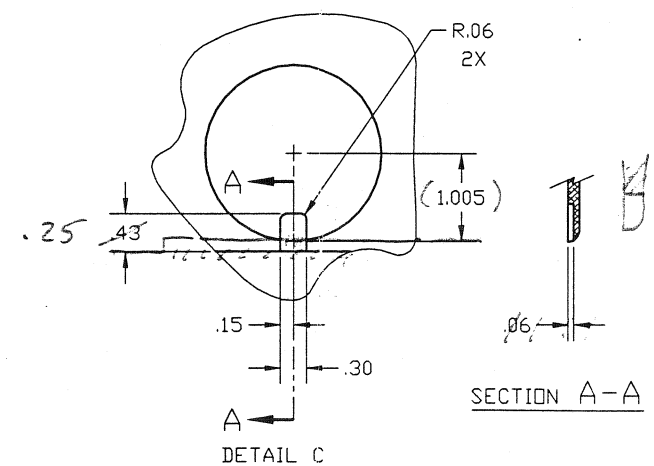
DETAIL A (SCALE: 2X)



DETAIL B (SCALE: 2X)



36-02405-1



SECTION A-A

HOLE CHART		
HOLE	DESCRIPTION	QTY
A	Ø.107-Ø.112	4
B	Ø.186-.190	2
C	TAP #2-56-UNC-2B THRU	4
D	Ø.107-Ø.112 THRU	1
E	Ø2.010 \pm .010 X ∇ Ø30 .027.012	1
F	Ø.107-.112 THRU \perp Ø.186-.190 ∇ .125	2
H	Ø.107-Ø.112 X ∇ .125	1

- NOTES:
1. DEBURR AND BREAK SHARP EDGES.
 2. MACHINED SURFACES ∇ 125/ MAX.
 3. FINISH: AS MACHINED. DO NOT POLISH.

NAME		DATE	MASSACHUSETTS INSTITUTE OF TECHNOLOGY	
DRAWN		H.C. WEST	CENTER FOR SPACE RESEARCH	
CHECKED		6/28/79	CAMBRIDGE, MA 02139	
APPROVED			2 inch OWS Holder	
RELEASED			OPTICAL WITNESS	
			SAMPLE HOLDER-A	
36-60200	ACIS		SIZE	FSC# NO.
NEXT ASSEMBLY	USED ON		DWG. NO.	REV.
APPLICATION			D	80230
			SCALE	1/1
				SHEET 1 OF 2
				101

OPTICAL WITNESS SAMPLE HOLDER 36-60214REV 01

LINE	SIZE	DWG #	REV	QTY	DESCRIPTION	COMMENTS
1	D	36-60214.01	X	1	HOLDER	
2	D	36-60214.02		1	RETAINER	
3	D	36-60214.03		1	COVER	
4	A	46-60214.04		4	SCREW,SOC HD, SS, #2-56 X .25 LG	MS16995-2
5	C	56-60214.05		1	HOUSING, TEST CONTAINER ACIS	427871-3
6						
7						
8						
9						
10						
11						
12						
13						
14						
15						
16						
17						
18						
19						
20						
21						
22						
23						
24						
25						
26						
27						
28						
29						
30						
31						
32						
33						
34						
35						
36						
37						