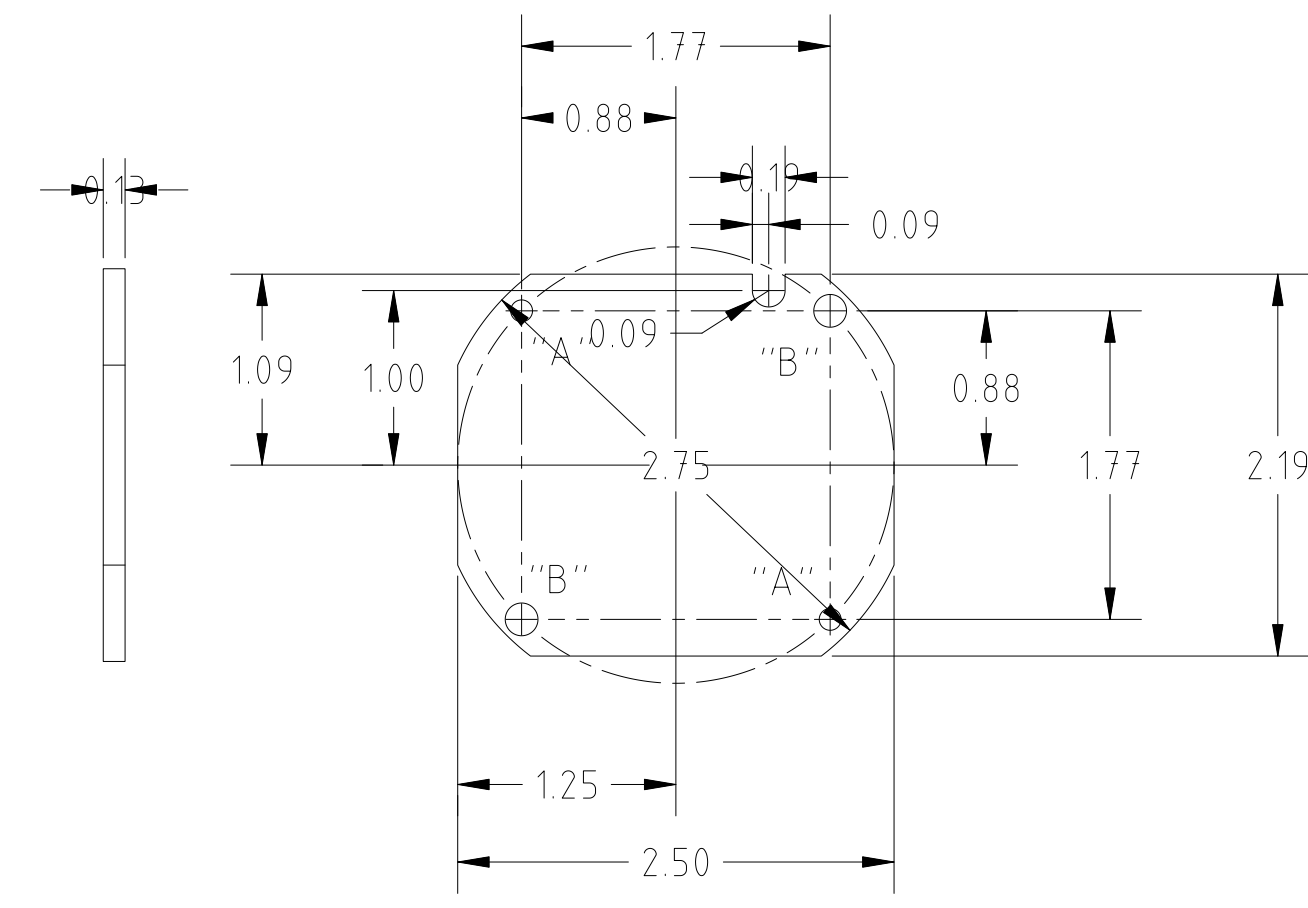
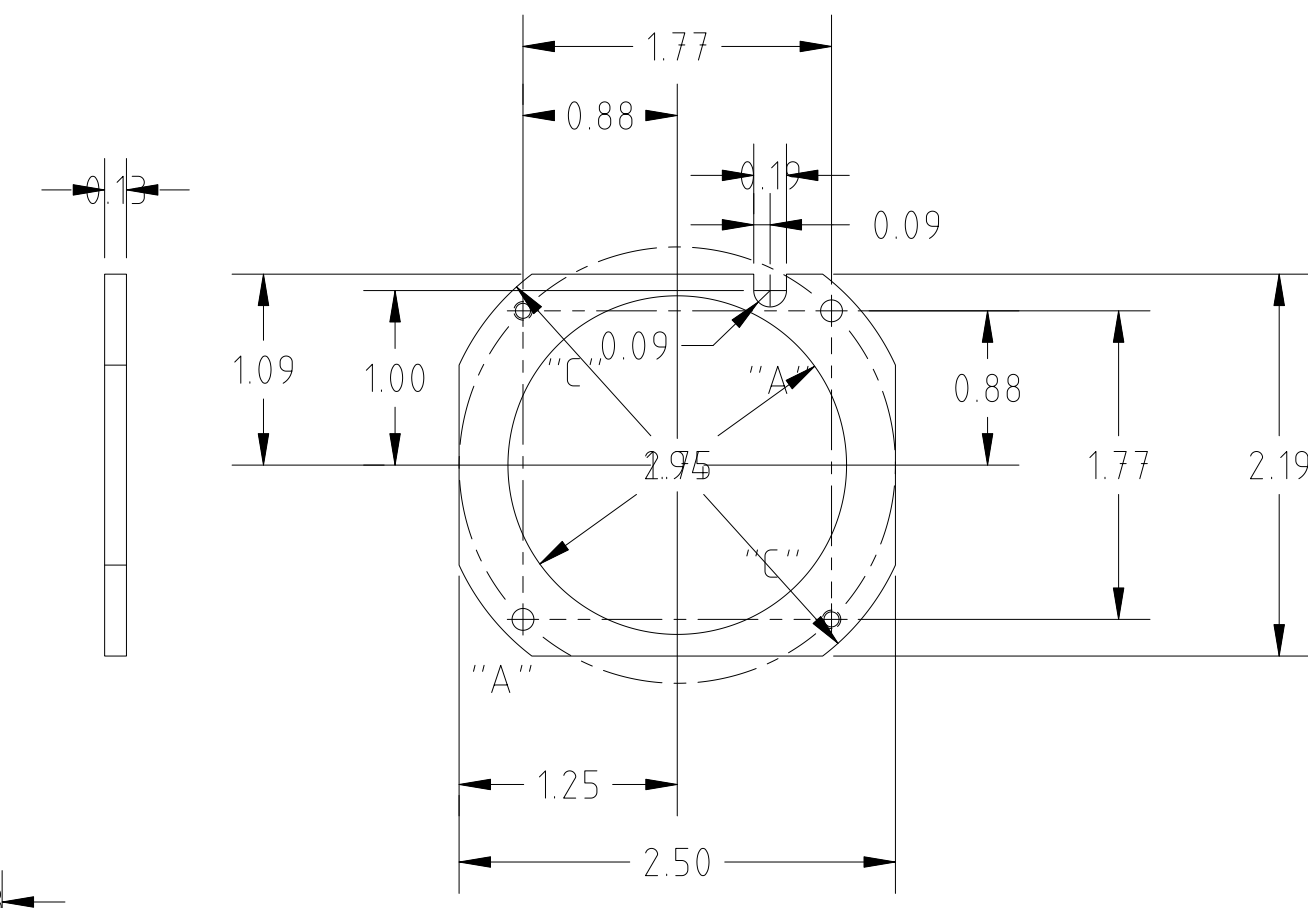


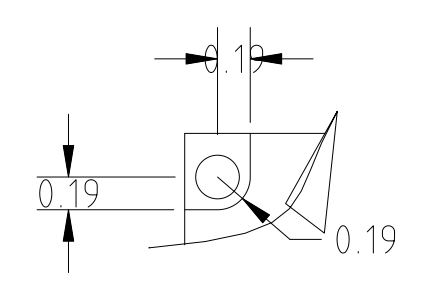
REVISIONS					
REV.	ECO NO.	DISCRIPTION	CHECKED	APPROVED	DATE
01	36-398	DWG NO. WAS 36-02405			
02	36-434	SEE ECO 36-434			



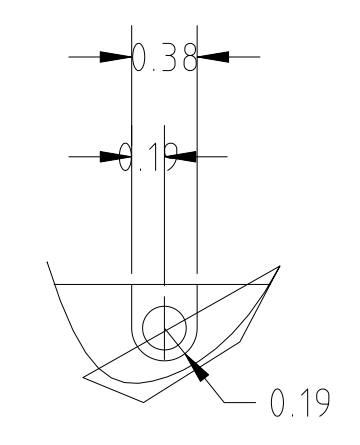
36-02405-3



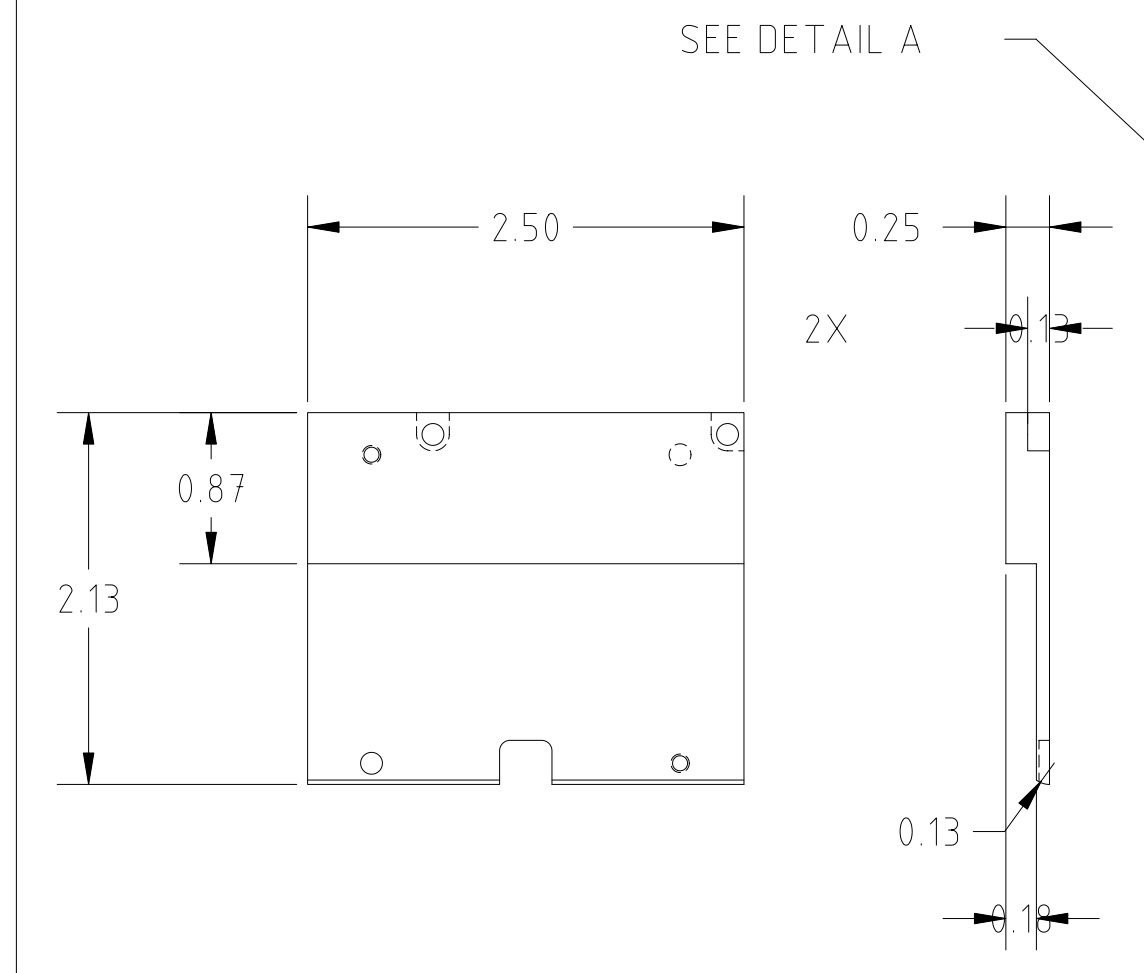
36-02405-2



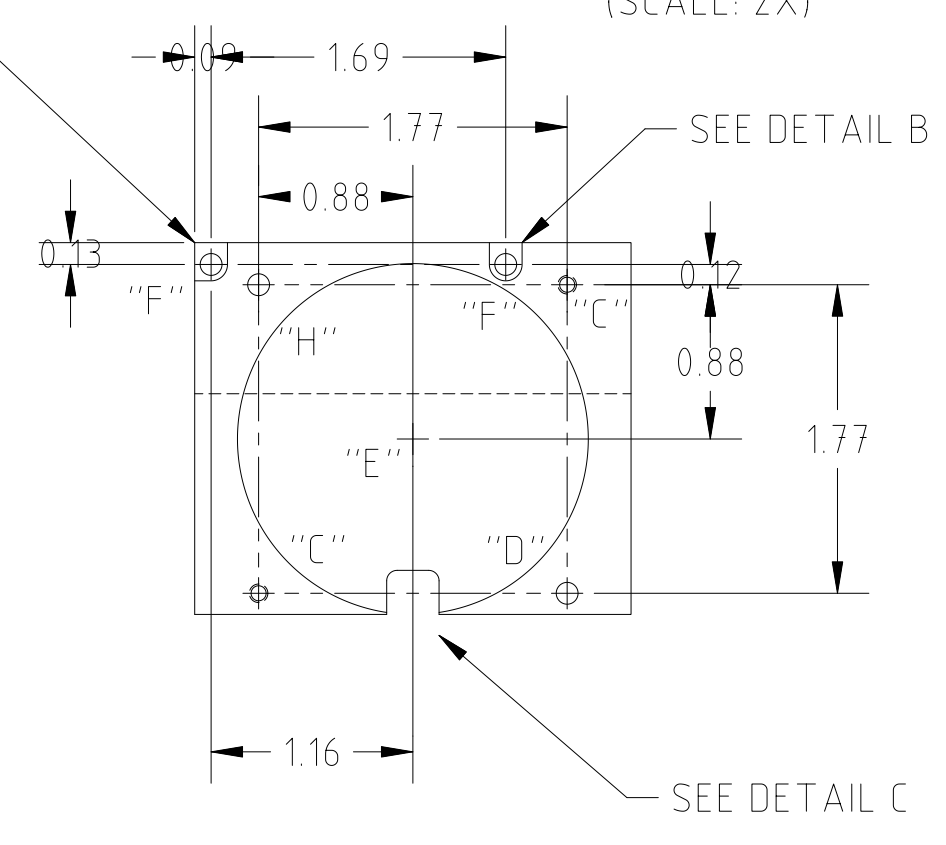
DETAIL A
(SCALE: 2X)



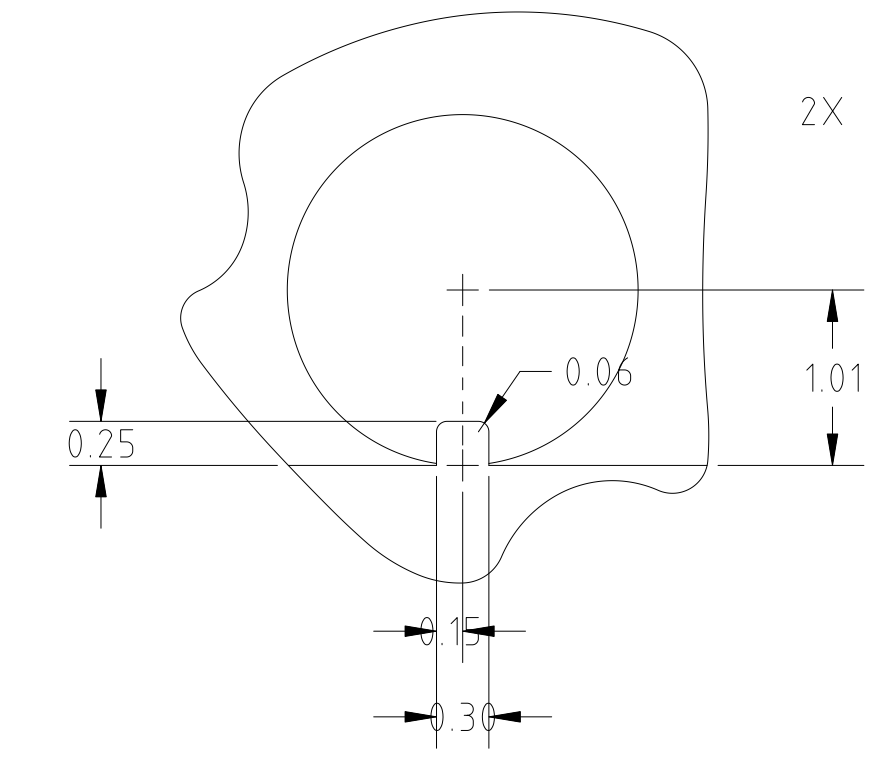
DETAIL B
(SCALE: 2X)



36-02405-1



SEE DETAIL C



DETAIL C

HOLE CHART		
HOLE	DESCRIPTION	QTY
A	φ.107-φ.112	4
B	φ.186-190	2
C	TAP #2-56-UNC-2B THRU	4
D	φ.107-φ.112 THRU	1
E	φ2.010 ±.0008 ±.012	1
F	φ.107-112 THRU φ.186-190 .125 ▽	2
H	φ.107-φ.112 X .125	1

- NOTES:
1. DEBURR AND BREAK SHARP EDGES.
 2. MACHINED SURFACES 125 MAX.
 3. FINISH: AS MACHINED. DO NOT POLISH.

36-60200	ACIS	UNLESS OTHERWISE SPECIFIED DIMENSIONS ARE IN INCHES TOLERANCE - ANGLES ± 1° 3 PLACE DECIMALS ± .005 2 PLACE DECIMALS ± .01
NEXT ASSEMBLY	USED ON	
APPLICATION		

MATERIAL
ALUMINUM
6061-T6

NAME	DATE	MASSACHUSETTS INSTITUTE OF TECHNOLOGY CENTER FOR SPACE RESEARCH CAMBRIDGE, MA 02139					
DRAWN	H.C. WEST	6/28/95	2 INCH OWS HOLDER				
CHECKED							
APPROVED							
RELEASED							
SIZE	D	FSCM NO.	80230	DWG NO.	36-60214	REV.	02
WEIGHT		SCALE	1/1	SHEET	1 OF 1		

