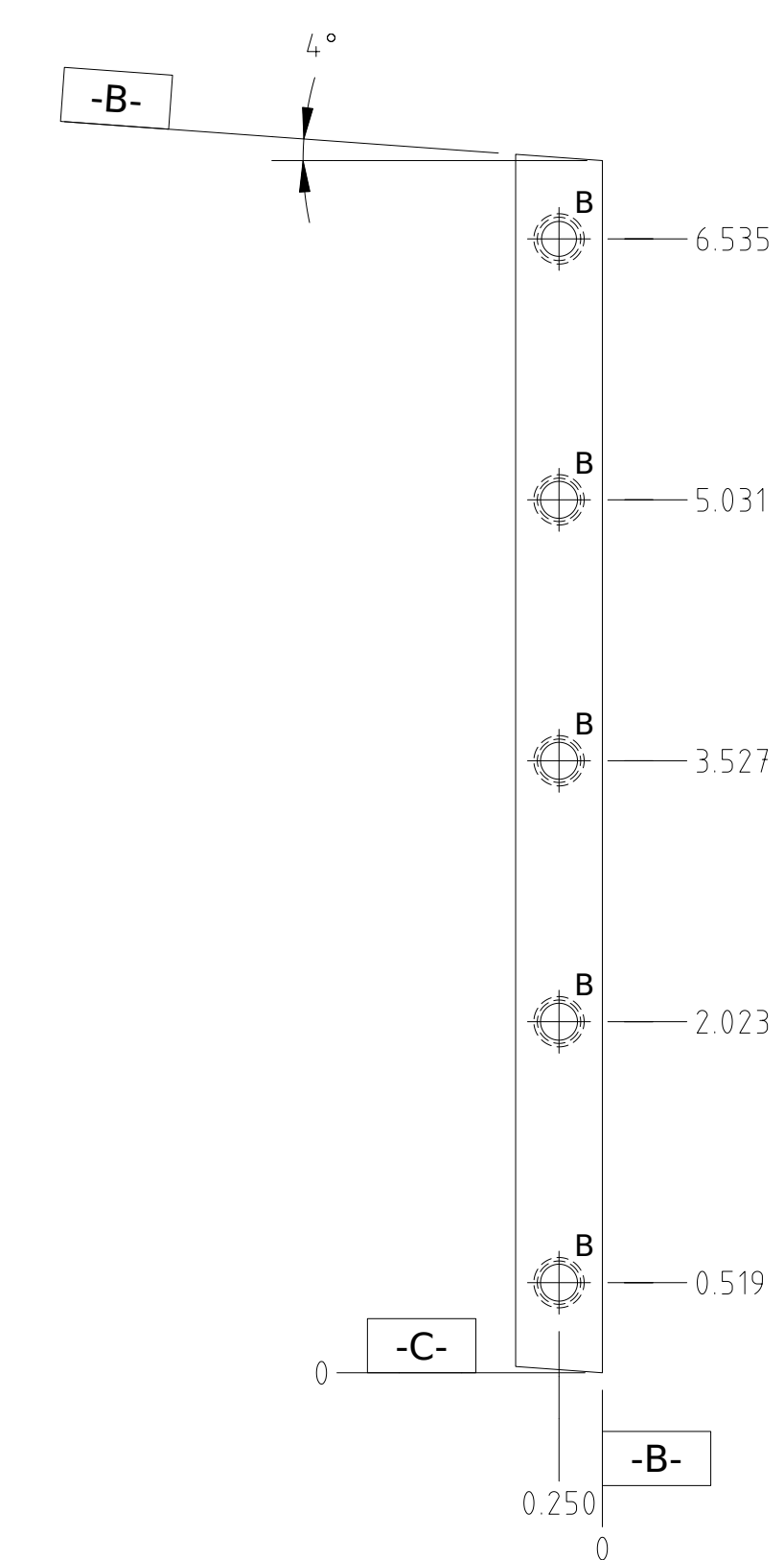
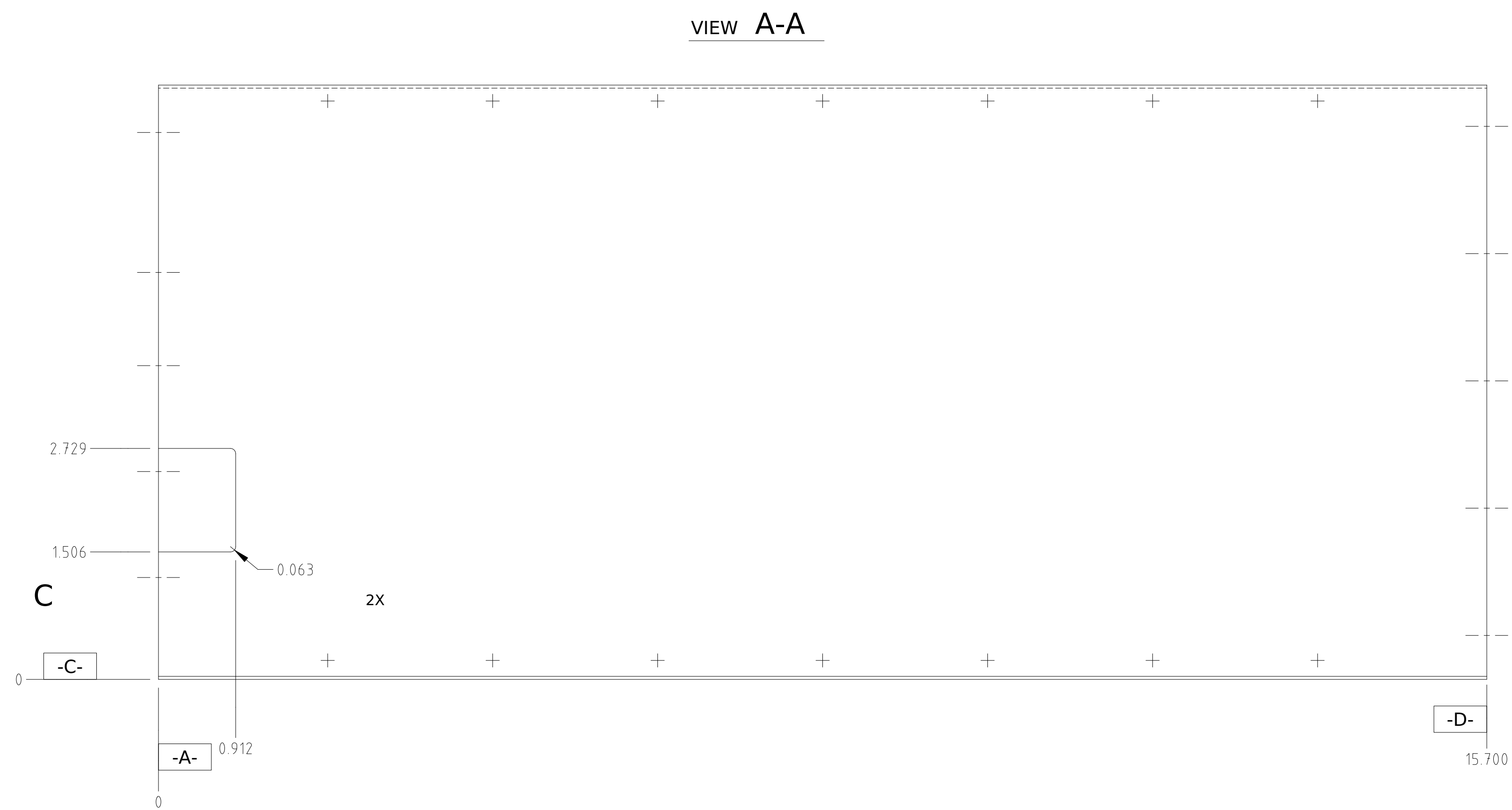
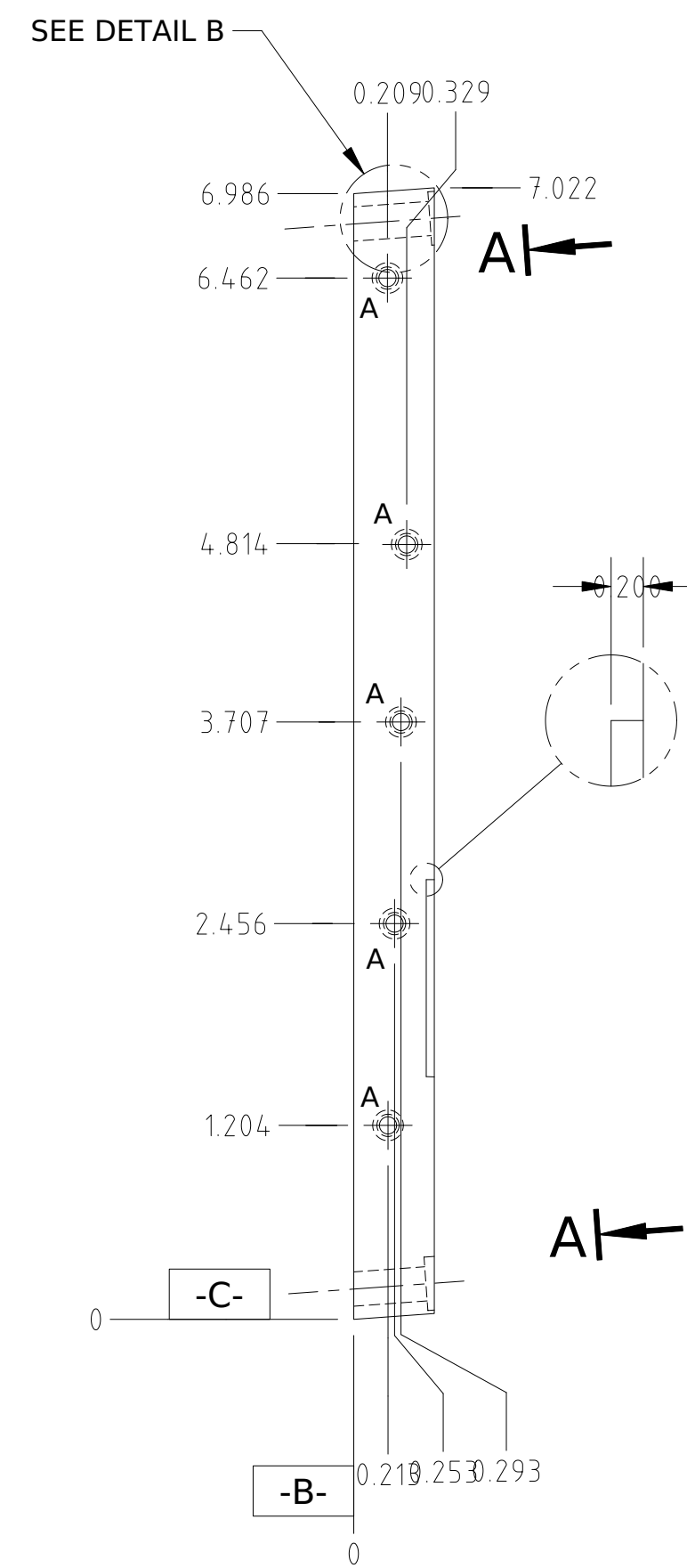
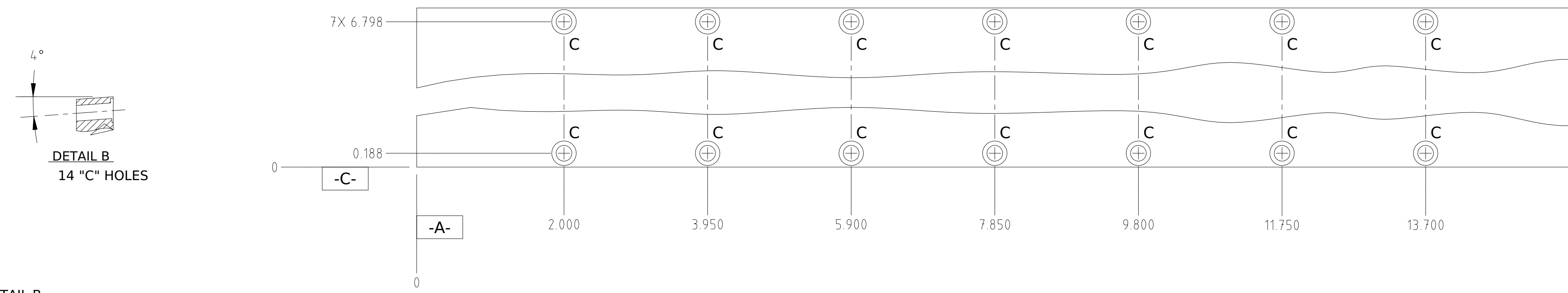


REVISIONS					
REV.	ECO NO.	DISCRIPTION	CHECKED	APPROVED	DATE
01	36-723	INITIAL RELEASE			



HOLE CHART		
HOLE	DESCRIPTION	QTY
A	$\varnothing.145-.150 \times .600, 120 \pm 5^\circ \times \varnothing.18-.21$ TAP 6(.138)-32UNC-3B HELICOIL STI THREAD $\nabla.330$ MIN FULL THREAD DEPTH. INSTALL FN2. $\varnothing \varnothing.010 (M) A B C$	5 \triangle
B	$\varnothing.199-.204 \times .662, 120 \pm 5^\circ \times \varnothing.23-.26$ TAP 10(.190)-32UNC-3B HELICOIL STI THREAD $\nabla.410$ MIN FULL THREAD DEPTH. INSTALL FN3. $\varnothing \varnothing.010 (M) D B C$	5 \triangle
C	$\varnothing.200-.205$ THRU, SPOTFACE $\varnothing.332-.337$ FROM NEARSIDE $\varnothing \varnothing.010 (M) C E A$	14

NOTES:

1. MATERIAL: .50 THK ALUMINUM PLATE, 6061-T651 PER QQ-A-250/11
2. DEBURR AND BREAK SHARP EDGES.
3. CONVERSION COAT PER MIL-C-5541, CLASS 3.
4. AFTER FINISH AND CLEANING, INSTALL INSERTS .75-1.50 PITCH BELOW THE SURFACE.

36-60211.10	ACIS	UNLESS OTHERWISE SPECIFIED DIMENSIONS ARE IN INCHES TOLERANCE: ANGLES $\pm 1^\circ$ 3 PLACE DECIMALS $\pm .005$ 2 PLACE DECIMALS $\pm .01$
NEXT ASSEMBLY	USED ON	
APPLICATION		MATERIAL SEE NOTE 1
		INTERPRET DIMENSIONS AND TOLERANCES IAW ANSI Y14.5M-1982

NAME DRAWN H.C. WEST	DATE 8/1/96	MASSACHUSETTS INSTITUTE OF TECHNOLOGY CENTER FOR SPACE RESEARCH CAMBRIDGE, MA 02139	
CHECKED	APPROVED	DA MOCKUP SHAKE PLATE +Y	
RELEASED	RELEASED		
SIZE D	FSCM NO. 80230	DWG. NO. 36-60211.1005	REV. 01
SCALE 1/1	SHEET 1 OF 1		