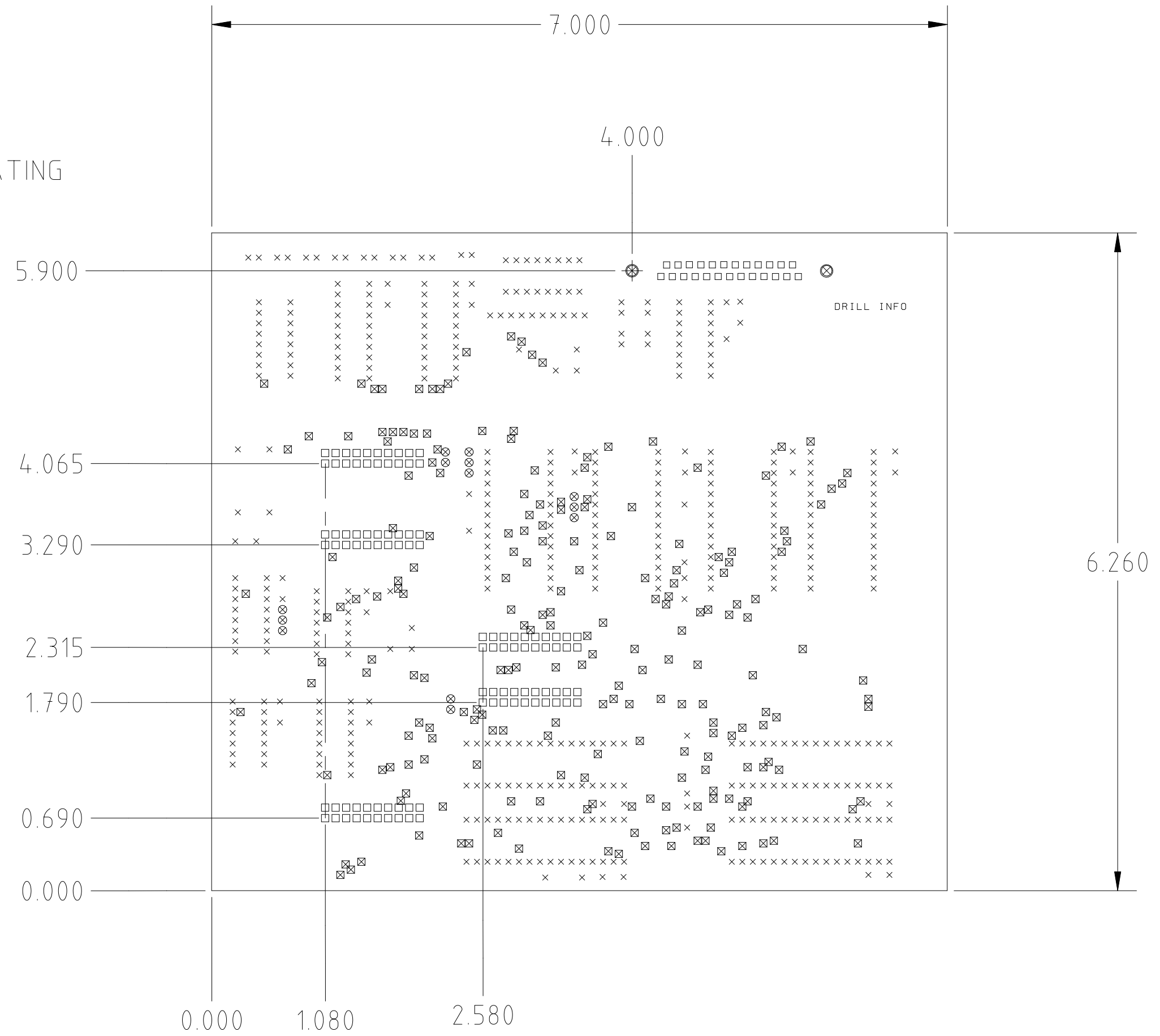


HOLE LEGEND			
SYM	SIZE	QTY	PLATE
x	.035DIA	400	YES
⊗	.040DIA	13	YES
□	.047DIA	125	YES
⊠	.026DIA	210	YES
⊗	.125DIA	2	YES

REVISIONS					
REV.	ECO NO.	DESCRIPTION	CHECKED	APPROVED	DATE
01	36-273	INITIAL RELEASE			5/22/95

.054-.070 OVER OUTSIDE PLATING



NOTES

- MAT'L: 0.062 THK COPPER CLAD FR4 EPOXY.
- HOLE COPPER PLATING THICKNESS 0.001 MIN.
- TIN-LEAD PLATING SHALL BE IAW MIL-P-81728 FOLLOWED BY REFLOW. TIN CONTENT SHALL BE MAINTAINED AT OR ABOVE 58%. TIN LEAD FUSING VIA HOT OIL REFLOW PROCESS IS PREFERRED. HOWEVER, INFRARED LEVELING MAY BE USED.
- SOLDERMASK: SR1000, CONFORMASK 2000 OR VACREL 8140. SOLDER MASK MAY BE APPLIED OVER BARE COPPER.
- FINISHED BOARD TO MEET THE REQUIREMENTS OF UL 94V-0
- WORKMANSHIP SHALL BE OF A QUALITY WHICH WILL ASSURE A PRODUCT FREE OF FOREIGN MATERIALS, BURRS, CORRIOSION, SCRATCHES, CHIPS, SHARP EDGES, PARTICLES OR OTHER DEFEXTS WHICH COULD EFFECT SERVICABILITY OR APPEARANCE.
- SILK SCREEN: WHITE EPOXY INK OVER COMPONENT SIDE.
- WARP AND TWIST: NOT TO EXCEED 0.010 IN/IN DEVIATION FROM A FLAT PLATE.
- ITEM SHALL BE FABRIACTED IAW MIL-P-55110 DRILLING WITH NEW DRILLS ONLY.
- 1200 HITS PER DRILL MAX. HOLE SYMBOLS ARE FOR REFERENCE ONLY AND SHALL NOT APPEAR ON ITEM.

		UNLESS OTHERWISE SPECIFIED DIMENSIONS ARE IN INCHES TOLERANCE: ANGLES ± 1° 3 PLACE DECIMALS ± .005 2 PLACE DECIMALS ± .01	NAME	DATE	MASSACHUSETTS INSTITUTE OF TECHNOLOGY CENTER FOR SPACE RESEARCH CAMBRIDGE, MA 02139
			Drawn	Winter	
		MATERIAL	CHECKED		PWB-PROCESSOR TEST INTERFACE
			APPROVED		
		NEXT ASSEMBLY	RELEASED		SIZE
			USED ON		CAGE CODE
		APPLICATION	WEIGHT		DWG. NO.
			INTERPRET DIMENSIONS AND TOLERANCES IAW ANSI Y14.5M-1982		
					SCALE
					1:1
					SHEET
					1 OF 1
					REV.
					01