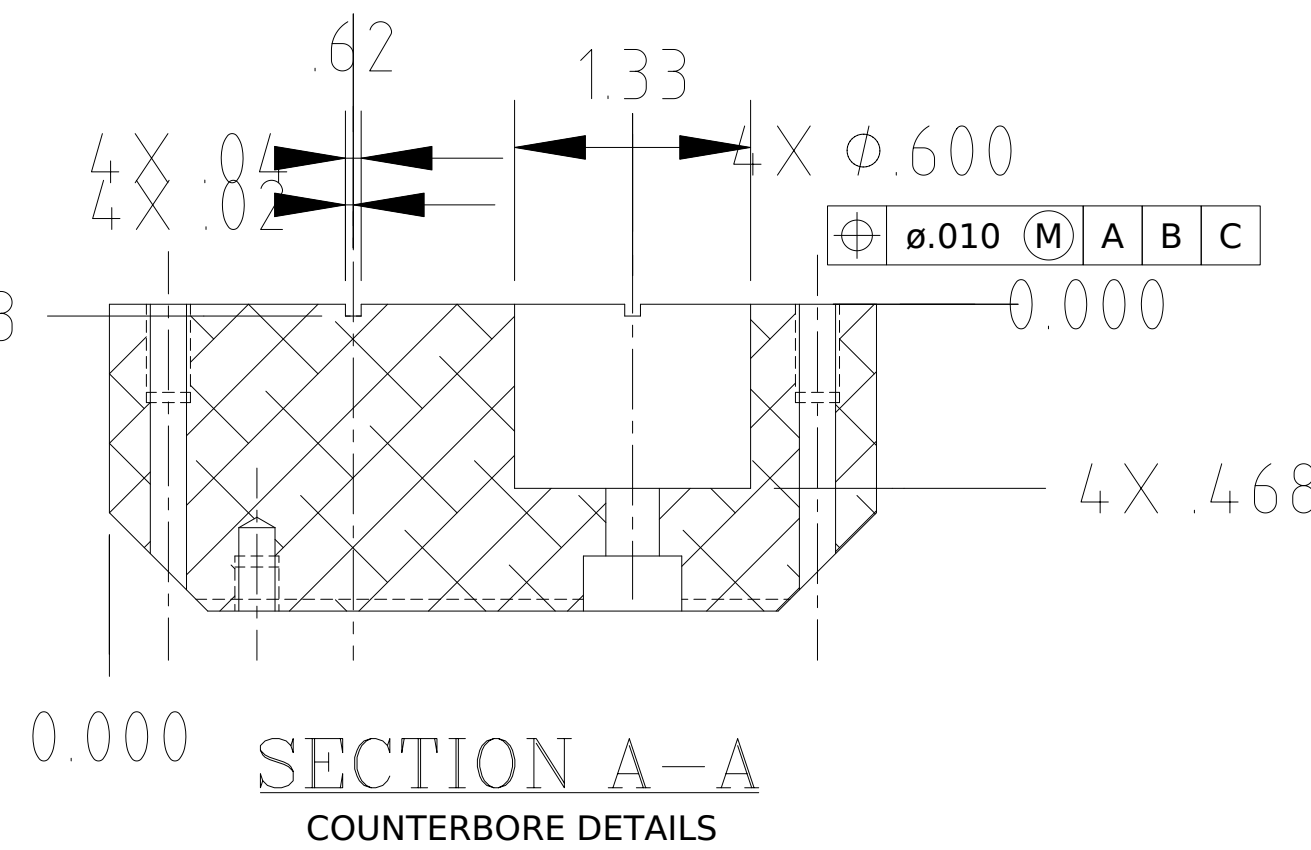
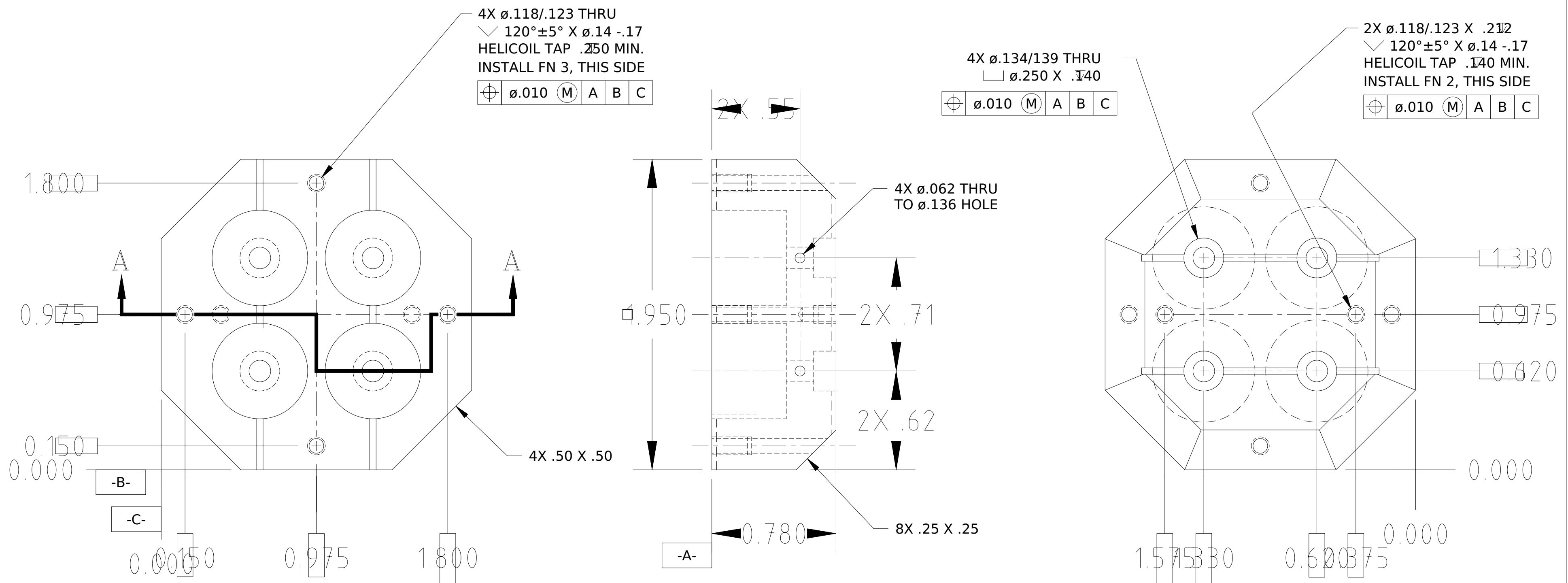


REVISIONS					
REV.	ECO NO.	DISCRIPTION	CHECKED	APPROVED	DATE
A	36-864	INITIAL RELEASE	FJK	WFM	5/6/97
B	36-917	REVISE PER ECO			



**NOTES:**

1. MACHINED SURFACES  $125 \mu\text{MAX}$ . EXCEPT AS NOTED.
2. BREAK SHARP EDGES  $.01$  RADIUS.
3. CONVERSION COAT PER MIL-C-5541 CLASS 3.

		UNLESS OTHERWISE SPECIFIED DIMENSIONS ARE IN INCHES TOLERANCE: ANGLES $\pm 1^{\circ}$ 3 PLACE DECIMALS $\pm .005$ 2 PLACE DECIMALS $\pm .01$		MASSACHUSETTS INSTITUTE OF TECHNOLOGY CENTER FOR SPACE RESEARCH CAMBRIDGE, MA 02139	
		NAME	DATE	<b>CALIBRATION SOURCE HOLDER</b>	
		DRAWN P.C.T.	2/19/97		
		CHECKED F.Kasparian	5/6/97		
		APPROVED W.Mayer	5/6/97		
		RELEASED D.Gage	5/6/97	SIZE C	FSCM NO. 80230
		WEIGHT		DWG. NO. 36-40212.01	REV. B
36-40212	ACIS	MATERIAL ALUM 6061-T651		SCALE 2/1	SHEET 1 OF 1
NEXT ASSEMBLY	USED ON				
APPLICATION					