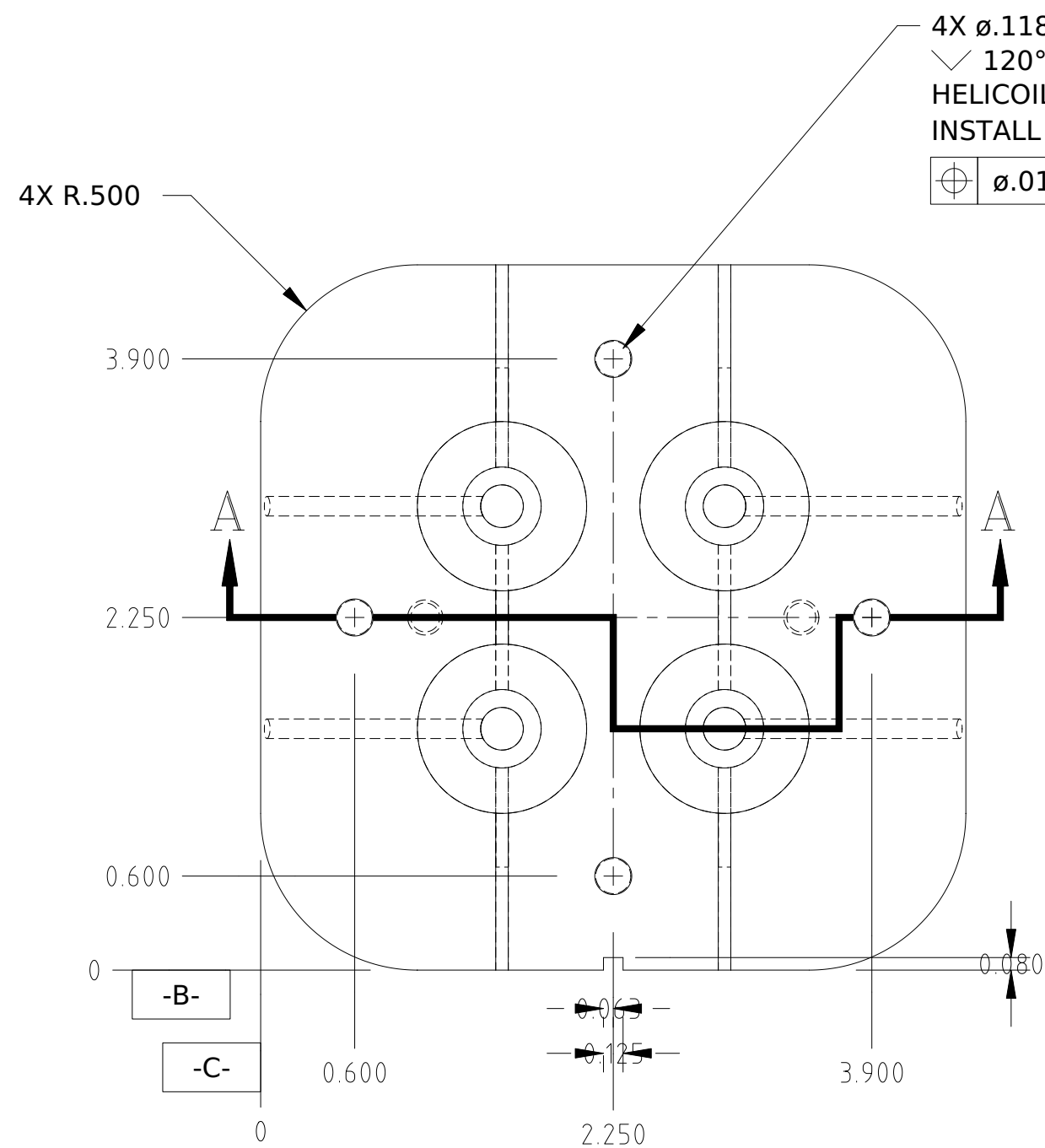
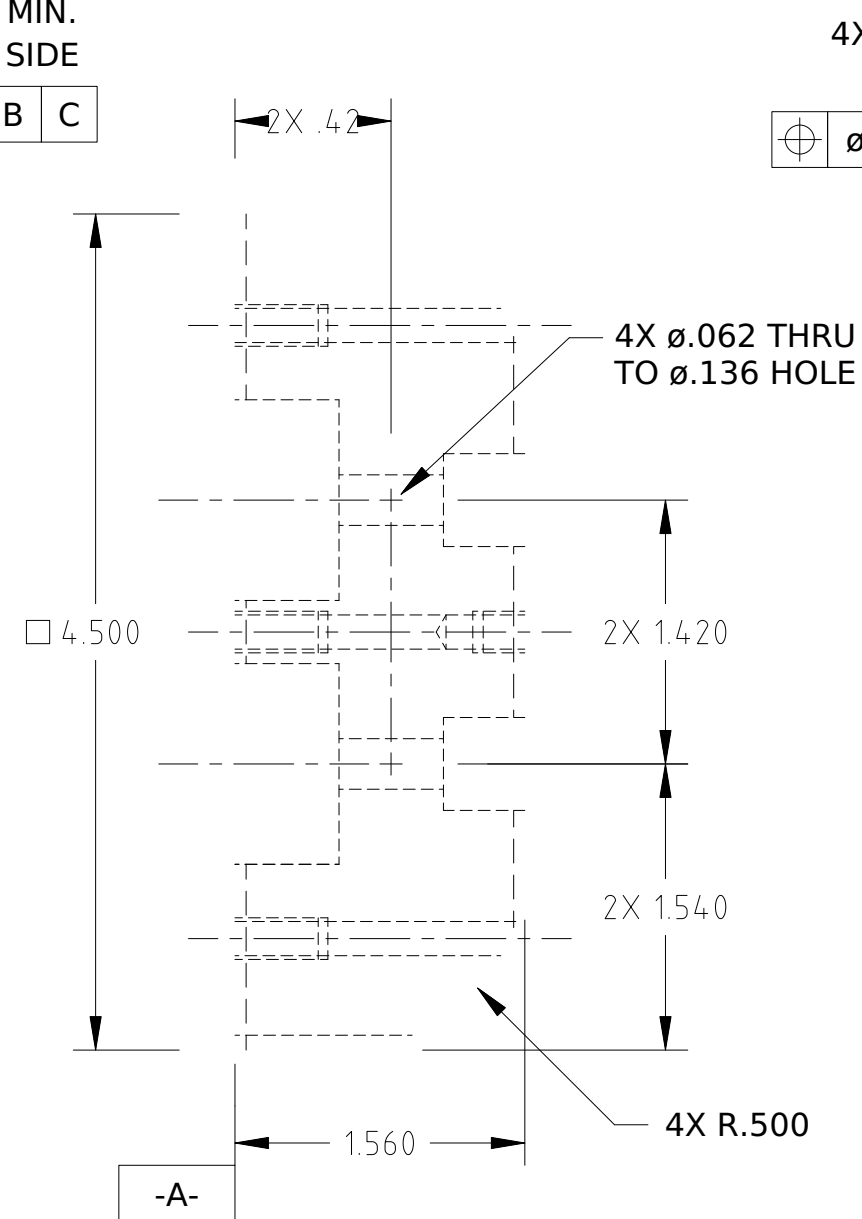


REVISIONS					
REV.	ECO NO.	DESCRIPTION	CHECKED	APPROVED	DATE
A	36-538	INITIAL RELEASE			



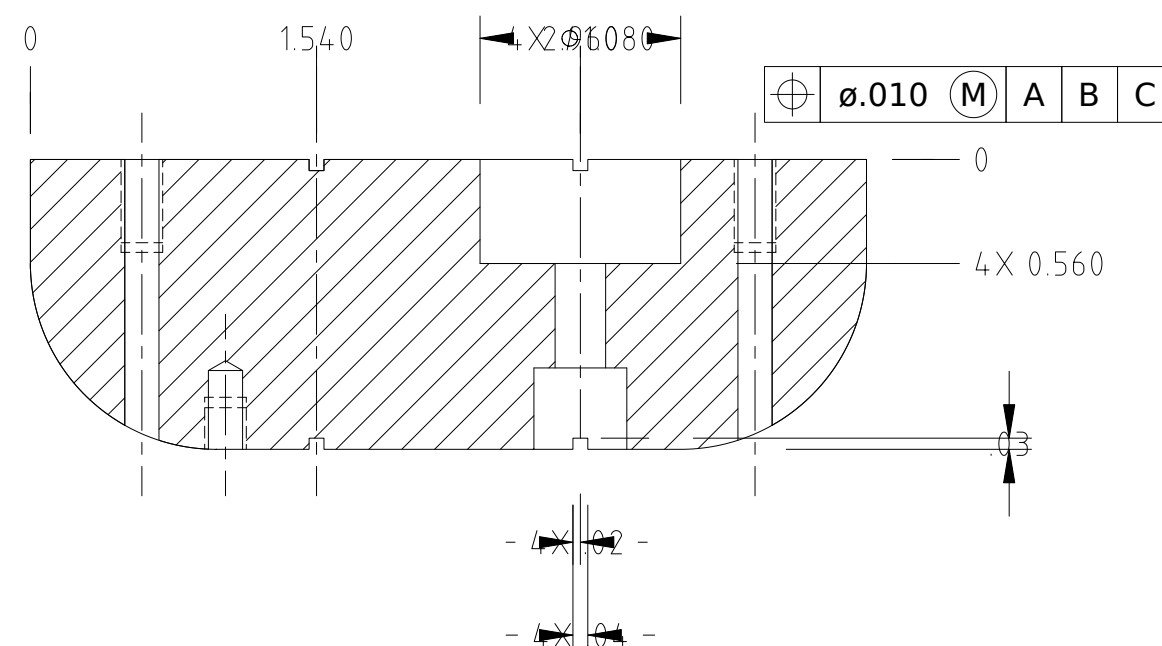
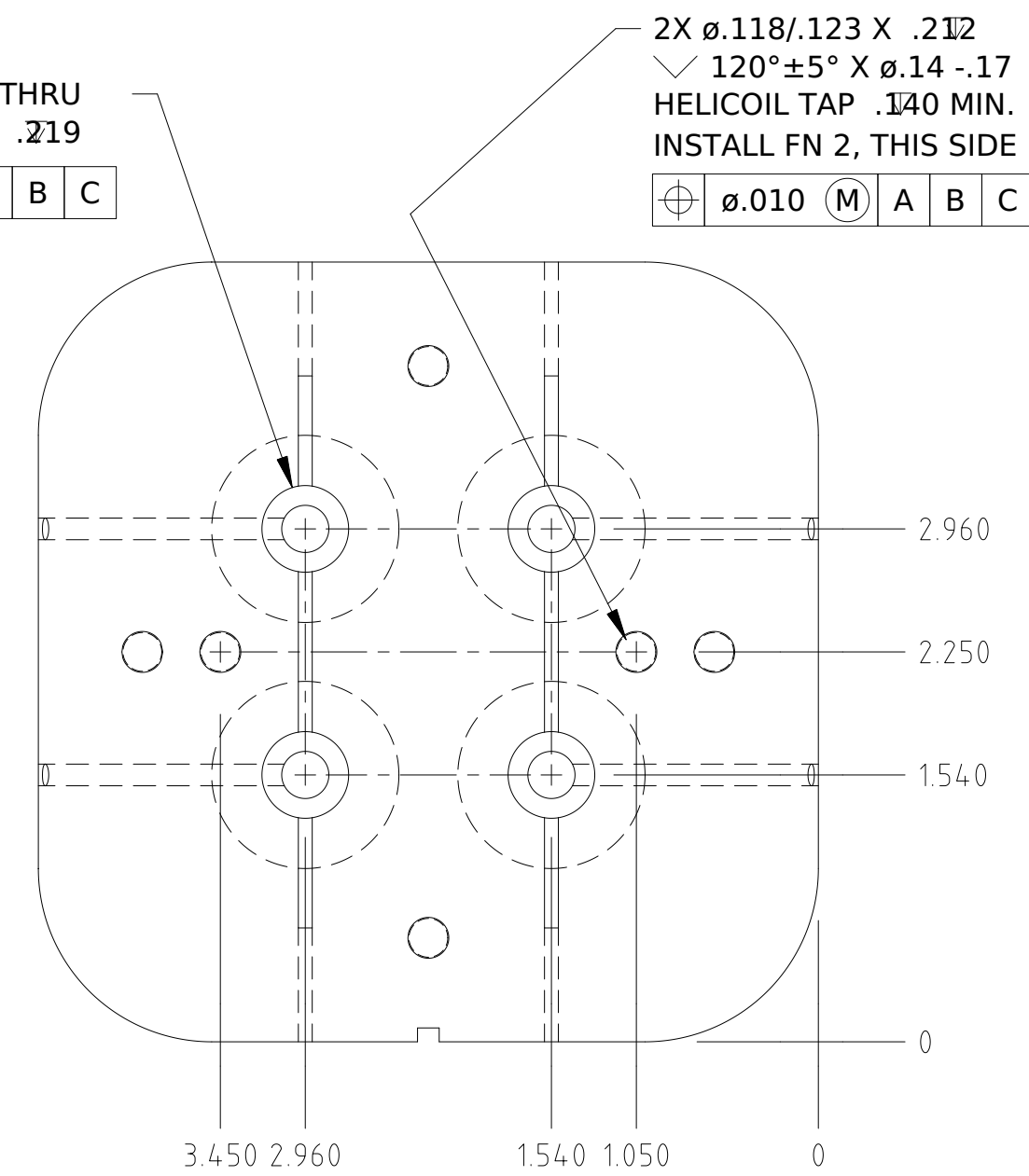
4X ϕ .118/.123 THRU
 \sphericalangle 120°±5° X ϕ .14 -.17
 HELICOIL TAP .250 MIN.
 INSTALL FN 1, THIS SIDE

\oplus ϕ .010 (M) A B C



4X ϕ .134/.139 THRU
 \sphericalangle ϕ .250 X .219

\oplus ϕ .010 (M) A B C



SECTION A-A
 COUNTERBORE DETAILS
 SCALE: 2/1

NOTES:

1. MACHINED SURFACES 125 MAX. EXCEPT AS NOTED.
2. BREAK SHARP EDGES .01 RADIUS.

		UNLESS OTHERWISE SPECIFIED DIMENSIONS ARE IN INCHES TOLERANCE: ANGLES ± 1° 3 PLACE DECIMALS ± .005 2 PLACE DECIMALS ± .01	NAME	DATE	MASSACHUSETTS INSTITUTE OF TECHNOLOGY CENTER FOR SPACE RESEARCH CAMBRIDGE, MA 02139			
			DRAWN J COOK	9/13/94	EXTERNAL CALIBRATION SOURCE HOLDER			
		MATERIAL	APPROVED					
36-40201	ACIS	TANTALUM	RELEASED		C	80230	36-40201.01	A
NEXT ASSEMBLY	USED ON	INTERPRET DIMENSIONS AND TOLERANCES IAW ANSI Y14.5M-1982	WEIGHT		SCALE: 2/1		SHEET	1 OF 1
APPLICATION								