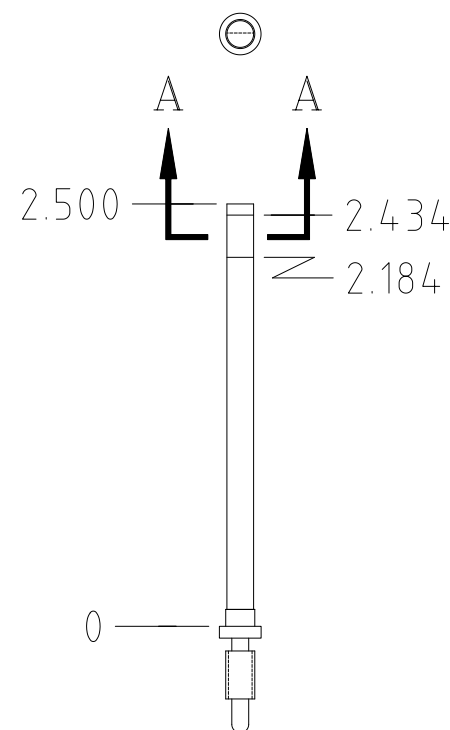
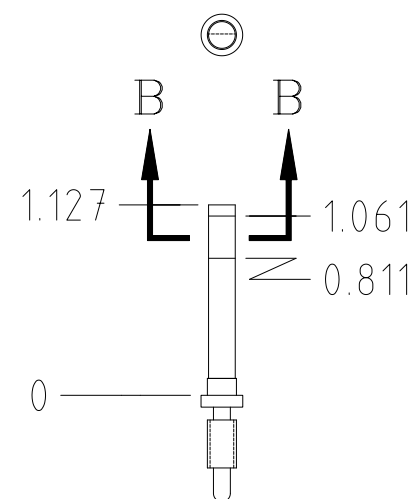


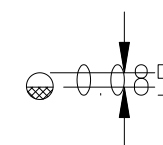
REVISIONS					
REV.	ECO NO.	DESCRIPTION	CHECKED	APPROVED	DATE
A	36-632	INITIAL RELEASE			



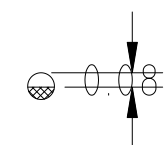
STANDARD LONG TURNABLE MALE JACK SCREW  
FOR POSITRONICS SGM C SERIES CONN



MODIFIED



SECTION A-A



SECTION B-B

ALTERED ITEM DRAWING

		UNLESS OTHERWISE SPECIFIED DIMENSIONS ARE IN INCHES TOLERANCE: ANGLES $\pm 1^\circ$ 3 PLACE DECIMALS $\pm .005$ 2 PLACE DECIMALS $\pm .01$	NAME	DATE	MASSACHUSETTS INSTITUTE OF TECHNOLOGY CENTER FOR SPACE RESEARCH CAMBRIDGE, MA 02139				
			DRAWN	H.C.WEST	4/19/96	JACKPOST MODIFICATION, MALE			
			CHECKED						
		MATERIAL	APPROVED		SIZE	CAGE CODE	DWG. NO.	REV.	
36-30405	ACIS	SEE DATA BASE	RELEASED		B	80230	36-30405.13	A	
NEXT ASSEMBLY	USED ON	INTERPRET DIMENSIONS AND TOLERANCES IAW ANSI Y14.5M-1982	WEIGHT		SCALE	2/1	SHEET	1 OF 1	
APPLICATION									