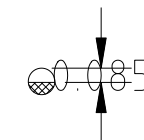
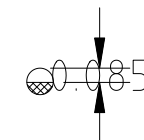
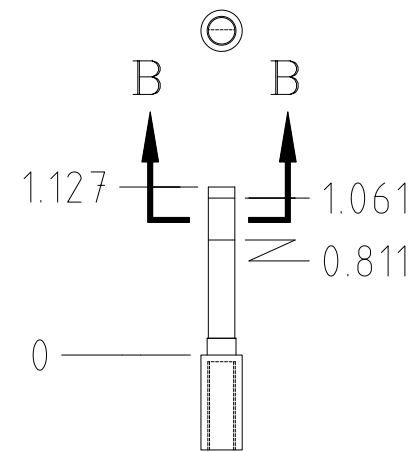
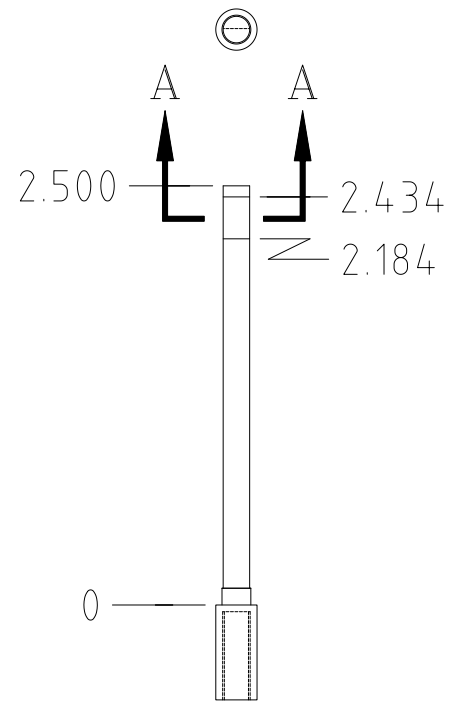


REVISIONS					
REV.	ECO NO.	DESCRIPTION	CHECKED	APPROVED	DATE
A	36-632	INITIAL RELEASE			



STANDARD LONG TURNABLE FEMALE JACK SCREW
FOR POSITRONICS SGM C SERIES CONN

MODIFIED

SECTION A-A

SECTION B-B

ALTERED ITEM DRAWING

		UNLESS OTHERWISE SPECIFIED DIMENSIONS ARE IN INCHES TOLERANCE: ANGLES $\pm 1^\circ$ 3 PLACE DECIMALS $\pm .005$ 2 PLACE DECIMALS $\pm .01$	NAME	DATE	MASSACHUSETTS INSTITUTE OF TECHNOLOGY CENTER FOR SPACE RESEARCH CAMBRIDGE, MA 02139			
				DRAWN <i>H.C.WEST</i>	4/19/96	JACKPOST MODIFICATION, FEMALE		
		MATERIAL	CHECKED		SIZE			
		36-30405	ACIS	SEE DATABASE	APPROVED			
		NEXT ASSEMBLY	USED ON	INTERPRET DIMENSIONS AND TOLERANCES IAW ANSI Y14.5M-1982	RELEASED			
		APPLICATION			WEIGHT			
						B	80230	36-30405.12
						SCALE 2/1		SHEET 1 OF 1