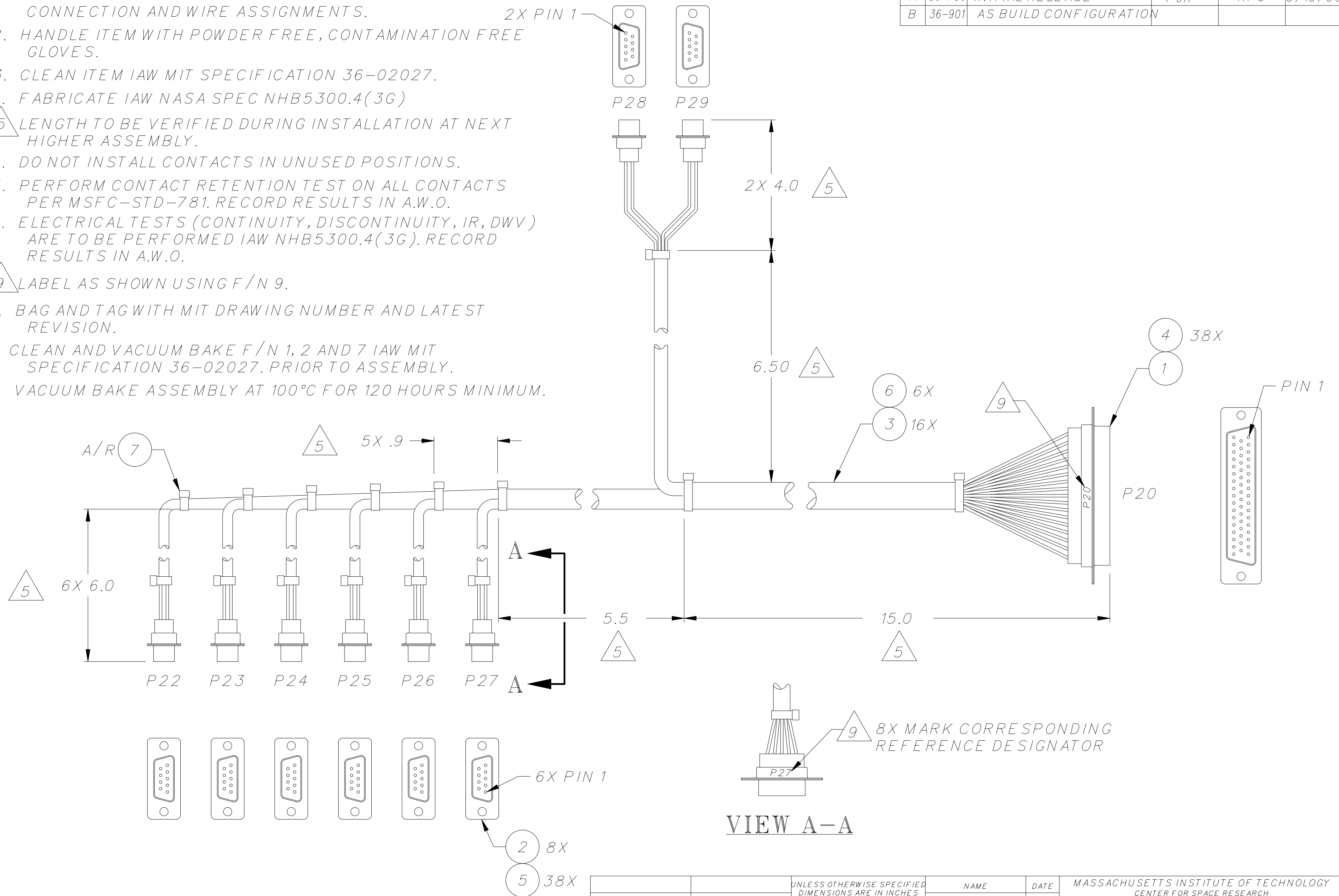


NOTES:

1. REFER TO MIT DRAWING 36-03021.01 FOR SCHEMATIC CONNECTION AND WIRE ASSIGNMENTS.
2. HANDLE ITEM WITH POWDER FREE, CONTAMINATION FREE GLOVES.
3. CLEAN ITEM IAW MIT SPECIFICATION 36-02027.
4. FABRICATE IAW NASA SPEC NHB5300.4(3G)
5. LENGTH TO BE VERIFIED DURING INSTALLATION AT NEXT HIGHER ASSEMBLY.
6. DO NOT INSTALL CONTACTS IN UNUSED POSITIONS.
7. PERFORM CONTACT RETENTION TEST ON ALL CONTACTS PER MSFC-STD-781. RECORD RESULTS IN A.W.O.
8. ELECTRICAL TESTS (CONTINUITY, DISCONTINUITY, IR, DWV) ARE TO BE PERFORMED IAW NHB5300.4(3G). RECORD RESULTS IN A.W.O.
9. LABEL AS SHOWN USING F/N 9.
10. BAG AND TAG WITH MIT DRAWING NUMBER AND LATEST REVISION.
11. CLEAN AND VACUUM BAKE F/N 1, 2 AND 7 IAW MIT SPECIFICATION 36-02027. PRIOR TO ASSEMBLY.
12. VACUUM BAKE ASSEMBLY AT 100°C FOR 120 HOURS MINIMUM.

REVISIONS					
REV.	ECO NO.	DESCRIPTION	CHECKED	APPROVED	DATE
A	36-756	INITIAL RELEASE	FJK	RFG	9/19/96
B	36-901	AS BUILD CONFIGURATION			



VIEW A-A

		UNLESS OTHERWISE SPECIFIED DIMENSIONS ARE IN INCHES TOLERANCE: ANGLES ? 1° 3 PLACE DECIMALS ? .005 2 PLACE DECIMALS ? .01	NAME	DATE	MASSACHUSETTS INSTITUTE OF TECHNOLOGY CENTER FOR SPACE RESEARCH CAMBRIDGE, MA 02139	
			DRAWN M. LYONS	14AUG96	CABLE ASSEMBLY, DPA INTERNAL DPA POWER, W16	
		MATERIAL SEE DATABASE	CHECKED F. Kasparian	9/18/96	SIZE/CAGE CODE	
			APPROVED R. Goetze	9/19/96	DWG. NO.	
36-30300	ACIS		RELEASED D. Gage	9/19/96	C 80230	36-30318
NEXT ASSEMBLY	USED ON	INTERPRET DIMENSIONS AND TOLERANCES IAW ANS I Y14.5M-1982	WEIGHT		SCALE NONE	REV. B
APPLICATION						SHEET 1 OF 1