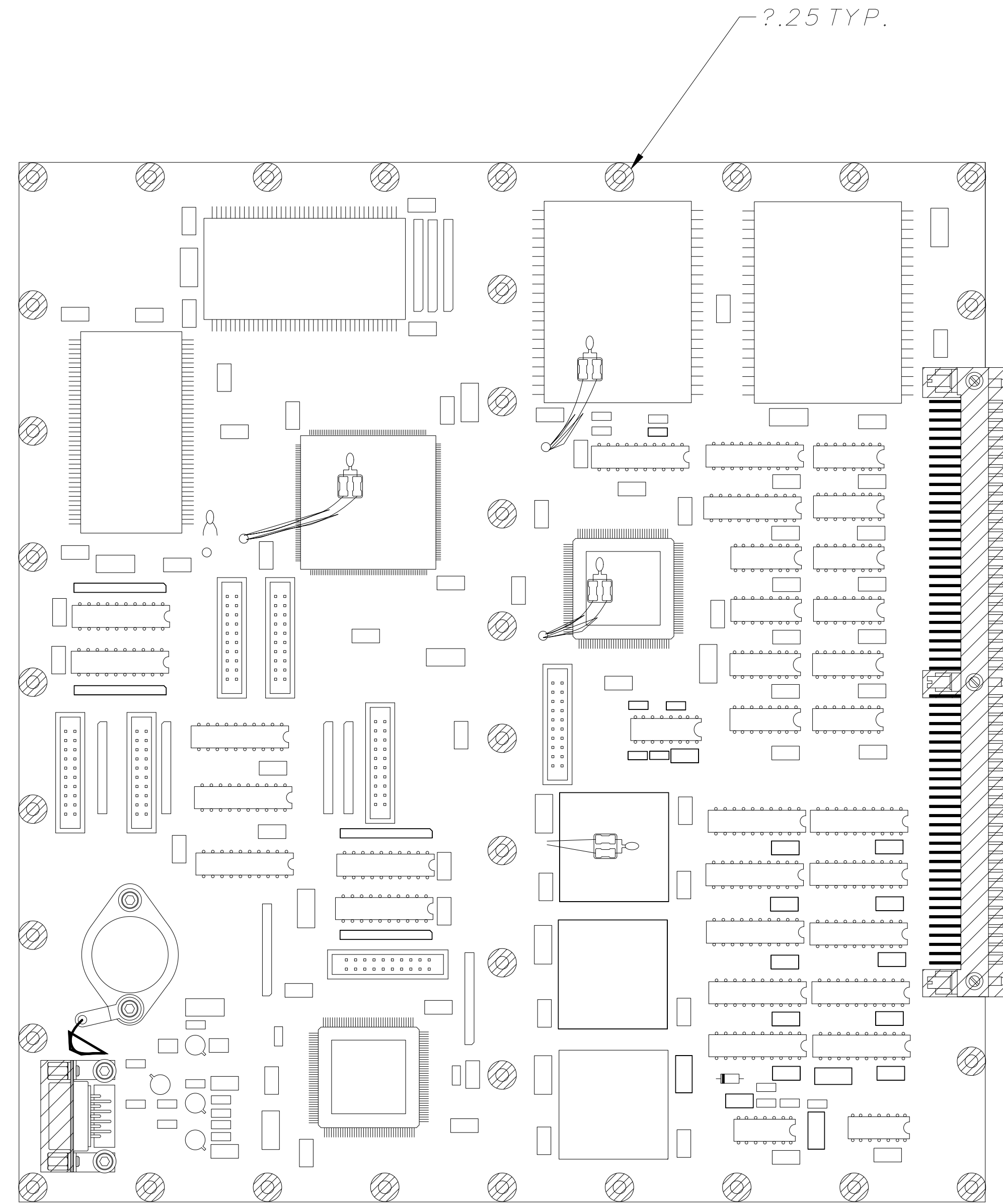
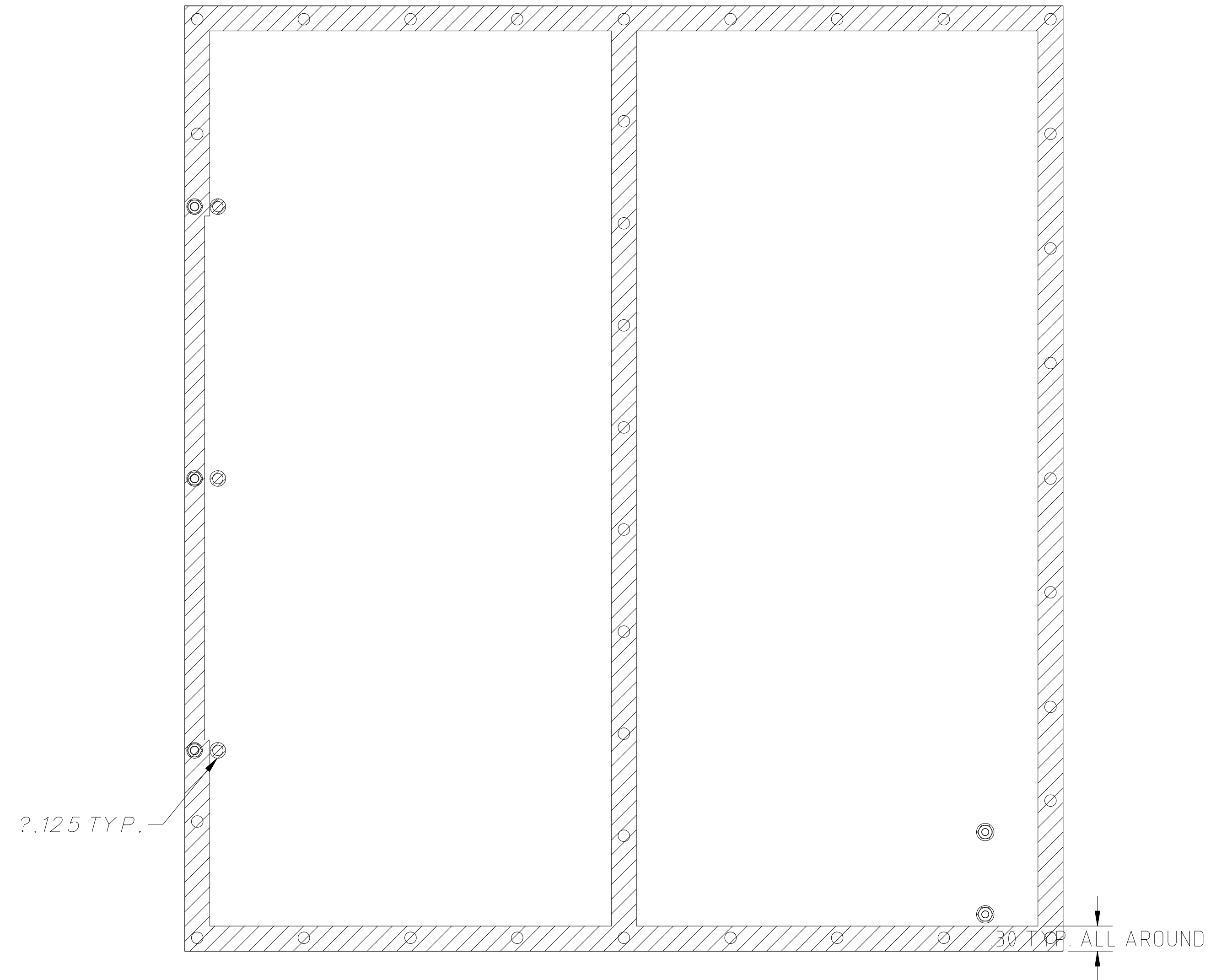


REVISIONS					
REV.	ECO NO.	DESCRIPTION	CHECKED	APPROVED	DATE
A	36-624	INITIAL FLIGHT RELEASE	FJK	RFG	5/20/96
B	36-650	MASKING ? WAS .31			




COMPONENT SIDE



SOLDER SIDE

NOTES:

1. CONFORMAL COAT IAW MIT SPECIFICATION 36-02026 USING F/N 9.
2. MASK AS INDICATED.
3. INSTALL PROTECTIVE COVER, F/N 31, OVER J1 DURING ALL NON-TESTING OPERATIONS.
4. CLEAN TEMPORARY HARDWARE IAW MIT PROCEDURE 36-02027 PRIOR TO ASSEMBLY.
5. HANDLE WITH CONTAMINATION, POWDER FREE GLOVES DURING ALL OPERATIONS.

INTERPRET DIMENSION AND TOLERANCES IAW ANSI Y14.5M-1982		NAME DRAWN Winter Design	DATE 7 May 96	 MASSACHUSETTS INSTITUTE OF TECHNOLOGY CENTER FOR SPACE RESEARCH CAMBRIDGE, MA 02139
UNLESS OTHERWISE SPECIFIED DIMENSIONS ARE IN INCHES TOLERANCE: ANGLES 1° 3 PLACE DECIMALS ? .005 2 PLACE DECIMALS ? .01		CHECKED F. Kasparian	20 MAY 96	
MATERIAL SEE DATABASE		APPROVED R. Goeke	20 MAY 96	FRONT END PROCESSOR MASKING
36-30302 ACIS		RELEASED J. Pepec	20 MAY 96	
SIZE	CAGE CODE	DWG. NO.	REV.	
D	80230	36-30302.99B		
SCALE 1:1		SHEET 1 OF 1		