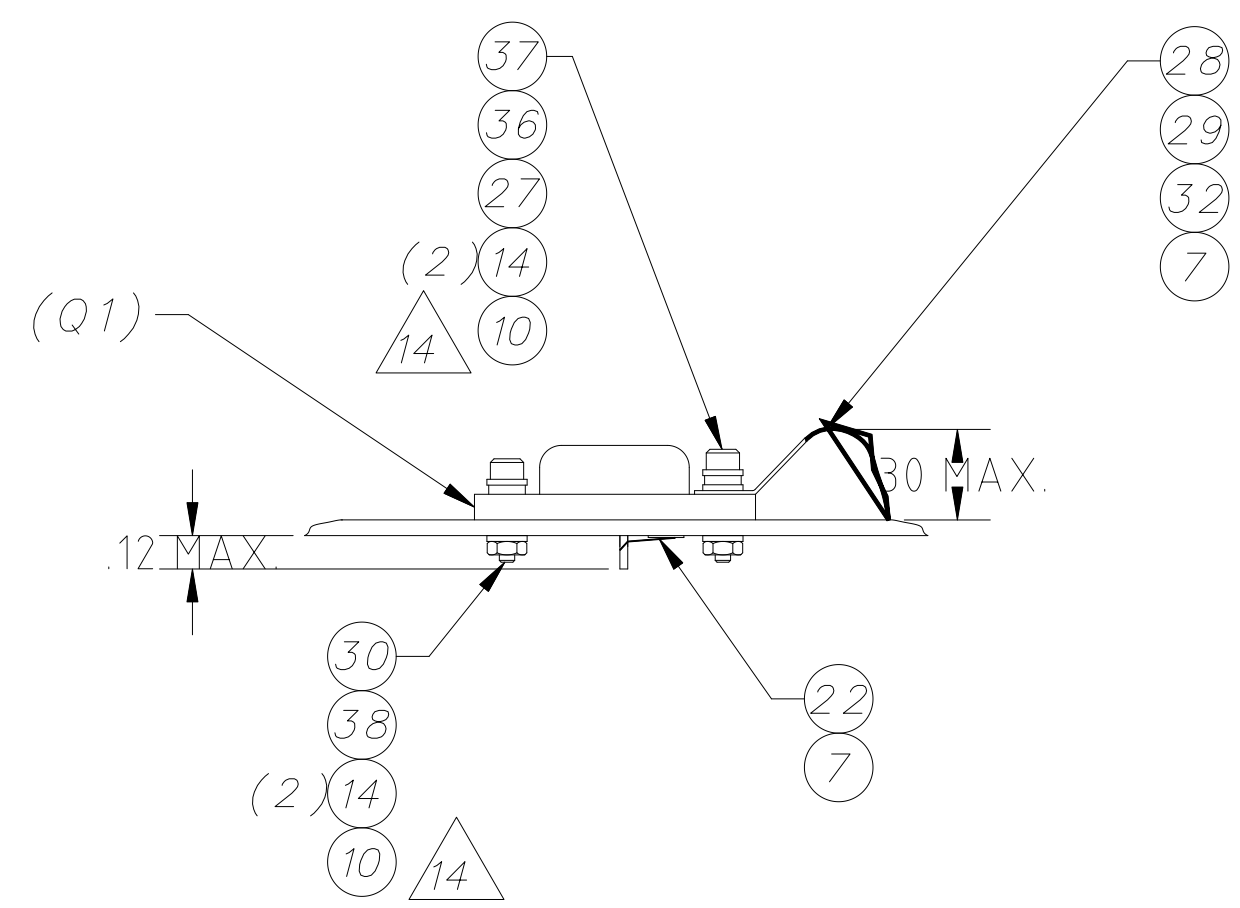
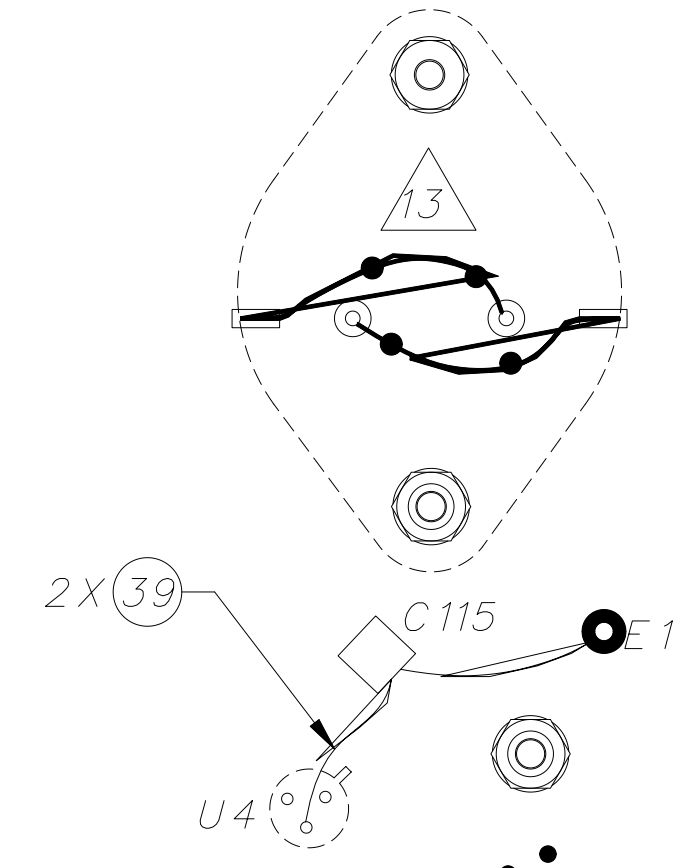


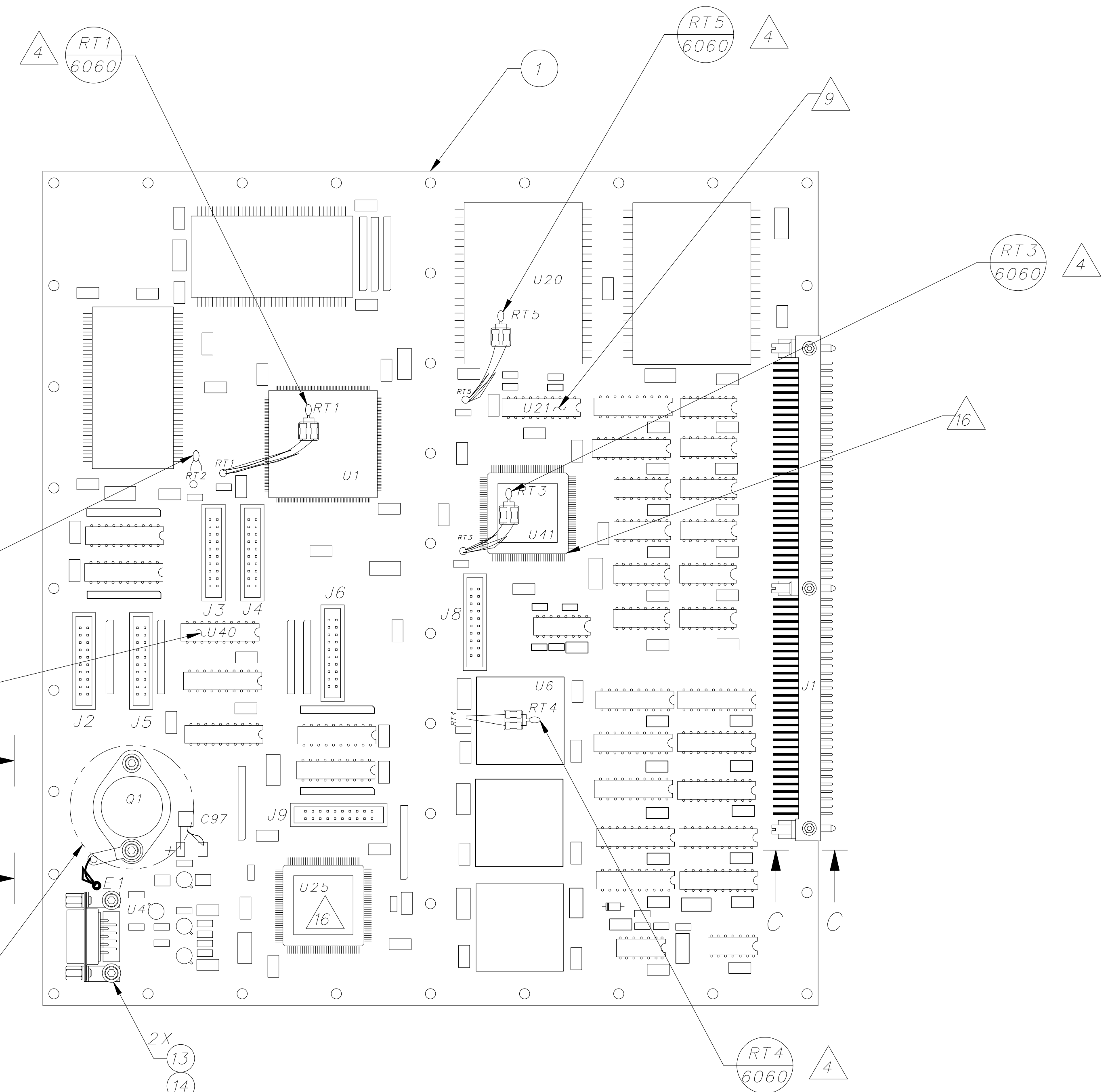
REVISIONS					
REV.	ECO NO.	DESCRIPTION	CHECKED	APPROVED	DATE
A	36-624	INITIAL FLIGHT RELEASE	FJK	RFG	5/20/96
B	36-688	ADD JUMPERS TO U21	FJK	RFG	7/16/96
C	36-720	ADD VIEW C-C	FJK	RFG	8/9/96
D	36-771	ADD JUMPPERS TO U40	FJK	RFG	8/9/96
E	36-779	ADD C115 & C97	FJK	RFG	10/1/96
F	36-790	ADD NOTE 16			



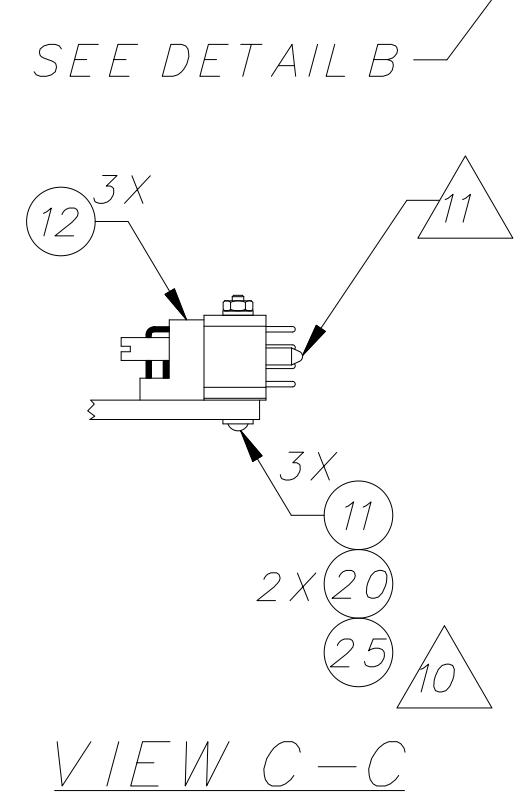
VIEW A-A
ROTATED 90°



DETAIL B
Q1 ATTACHMENT
SOLDER SIDE VIEW



- NOTES:
- RECORD EPOXIES USED, MIX RATIO, EXPIRATION DATES, ETC. ON "MATERIAL PROCESSING MIXING RECORD" SECTION OF A.W.O.
 - SOLDERING TO BE IAW NASA SPECIFICATION NHB5300.4(3A-1).
 - INSTALL PROTECTIVE COVER, F/N 31, ON J1 DURING ALL NON-TESTING OPERATIONS.
 - INSTALLATION OF RT1,3-5
 - MOUNT F/N 26 USING F/N 3 APPROX. AS SHOWN.
 - SOLDER F/N'S 16 & 6060 TO PADS ON F/N 26.
 - ROUTE WIRES (F/N 16) FROM U1 TO HOLES MARKED RT1.
 - ROUTE WIRES (F/N 16) FROM U41 TO HOLES MARKED RT3.
 - ROUTE WIRES (F/N 16) FROM U6 TO HOLES MARKED RT4.
 - ROUTE WIRES (F/N 16) FROM U20 TO HOLES MARKED RT5.
 - SPOT BOND WIRING AND THERMISTOR BEAD USING F/N 18 IAW NASA SPECIFICATION NHB5300.4(3J).
 - INSTALLATION OF RT2
 - SOLDER THE LEADS OF F/N 6060 TO HOLES MARKER RT2.
 - THERMISTOR BEAD USING F/N 18 IAW NASA SPECIFICATION NHB5300.4(3J).
 - TORQUE TO 4 IN-LB. SPOTBOND WITH F/N 15.
 - AFTER TESTING, INSERT F/N 23 INTO J2-6,8,9. COVER WITH KAPTON TAPE, F/N 33. SPOTBOND WITH F/N 3.
 - CLEAN TEMPORARY HARDWARE IAW MIT PROCEDURE 36-02027 PRIOR TO ASSEMBLY.
 - CONNECT PINS 15 TO 13 AND 17 TO 19 ON U21 USING F/N 35 ON SOLDER SIDE. INSULATE F/N 35 WITH F/N 36. SPOTBOND WITH F/N 18.
 - TORQUE TO 20 IN-OZ. SPOTBOND WITH F/N 15.
 - SET KEYS TO A-1. TORQUE FINGER TIGHT.
 - CONNECT PINS OF U40 WITH F/N 35 ON SOLDER SIDE. INSULATE F/N 35 WITH F/N 36. SPOTBOND WITH F/N 18.
 - PIN 19 TO PIN 20
 - PIN 11 TO PIN 10
 - PIN 13 TO PIN 8
 - PIN 15 TO PIN 6
 - PIN 17 TO PIN 4
 - SPOTBOND WIRES OF Q1, SOLDER SIDE, WITH F/N 18 APPROX. AS SHOWN.
 - TORQUE TO 2 IN-LB. SPOTBOND WITH F/N 15.
 - SPOTBOND C97 AND C115 WITH F/N 18.
 - SPOTBOND CORNERS OF U25 AND U41 WITH F/N 15. PROTECT LEADS FROM F/N 15.



VIEW C-C

INTERPRET DIMENSION AND TOLERANCES IAW ANS Y14.5M-1982	NAME DRAWN Winter Design	DATE 7 May 96	MASSACHUSETTS INSTITUTE OF TECHNOLOGY CENTER FOR SPACE RESEARCH CAMBRIDGE, MA 02139
UNLESS OTHERWISE SPECIFIED DIMENSIONS ARE IN INCHES TOLERANCE: ANGLE'S 1° 3 PLACE DECIMALS .005 2 PLACE DECIMALS .01	CHECKED F. Kasparian	20 May 96	FRONT END PROCESSOR MIT SUBASSY
MATERIAL 36-30302 ACIS	APPROVED R. Goeke	20 May 96	
SEE DATABASE	RELEASED D. Gage	20 May 96	SIZE/CAGE CODE D 80230
APPLICATION	WEIGHT	SCALE 1:1	DWG. NO. 36-30302.98F
			REV. 1 OF 1