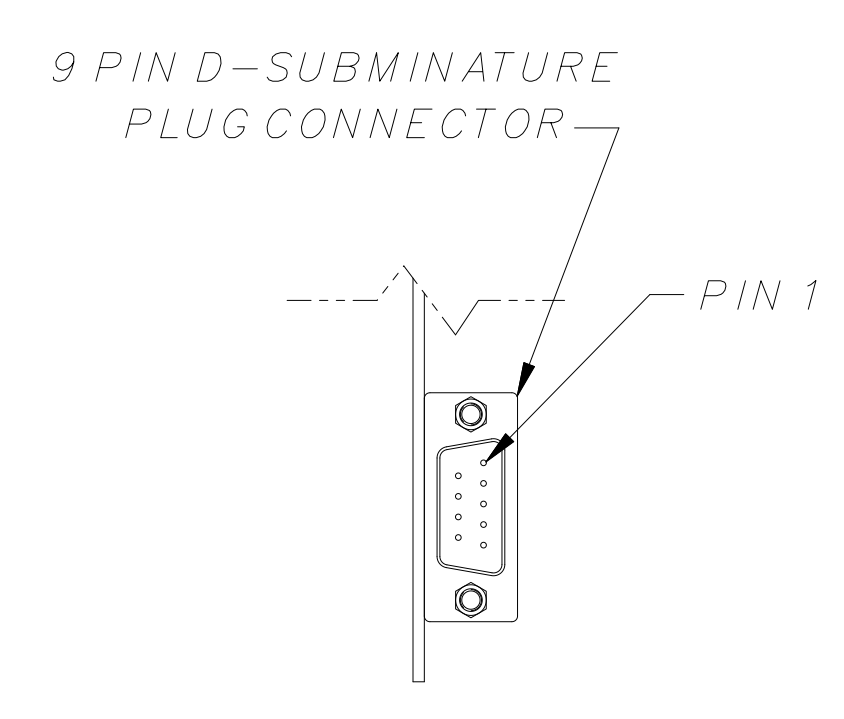
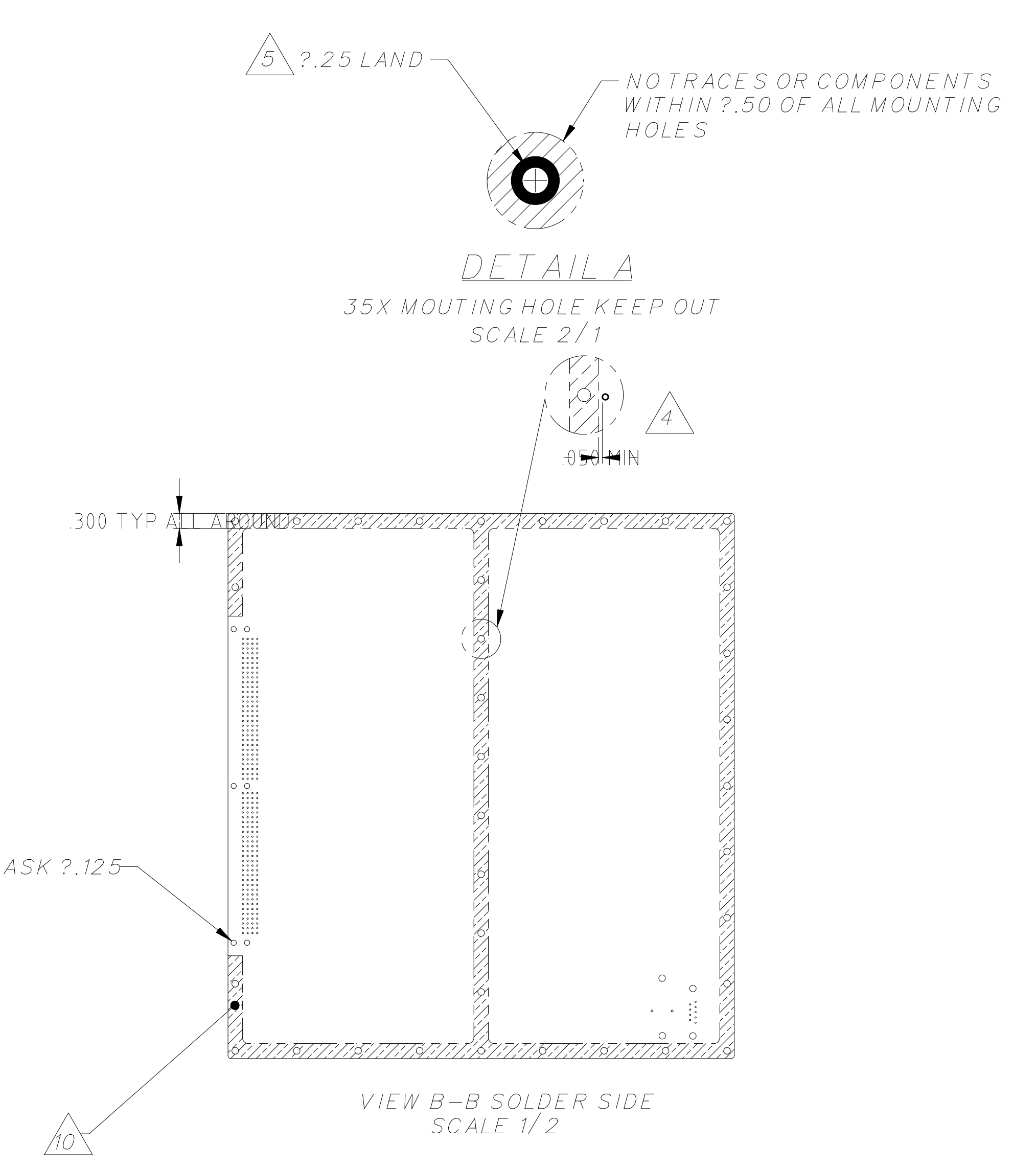
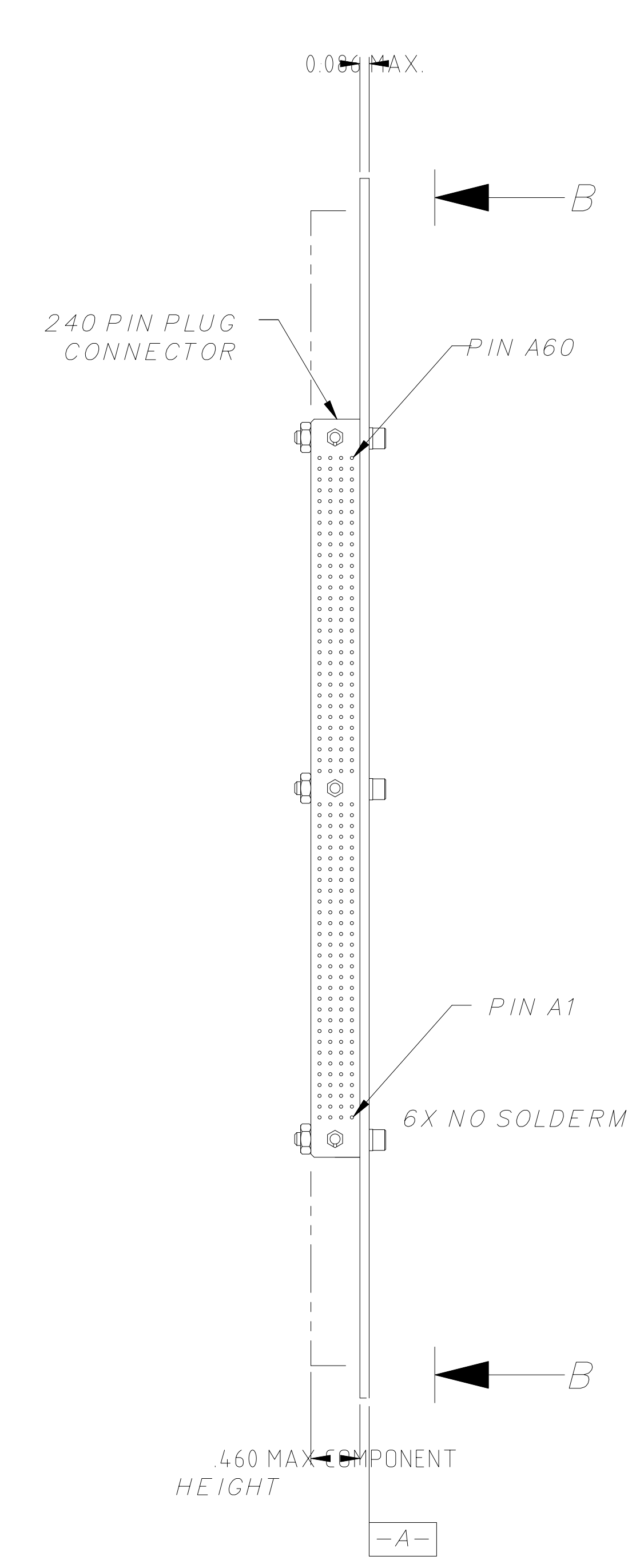
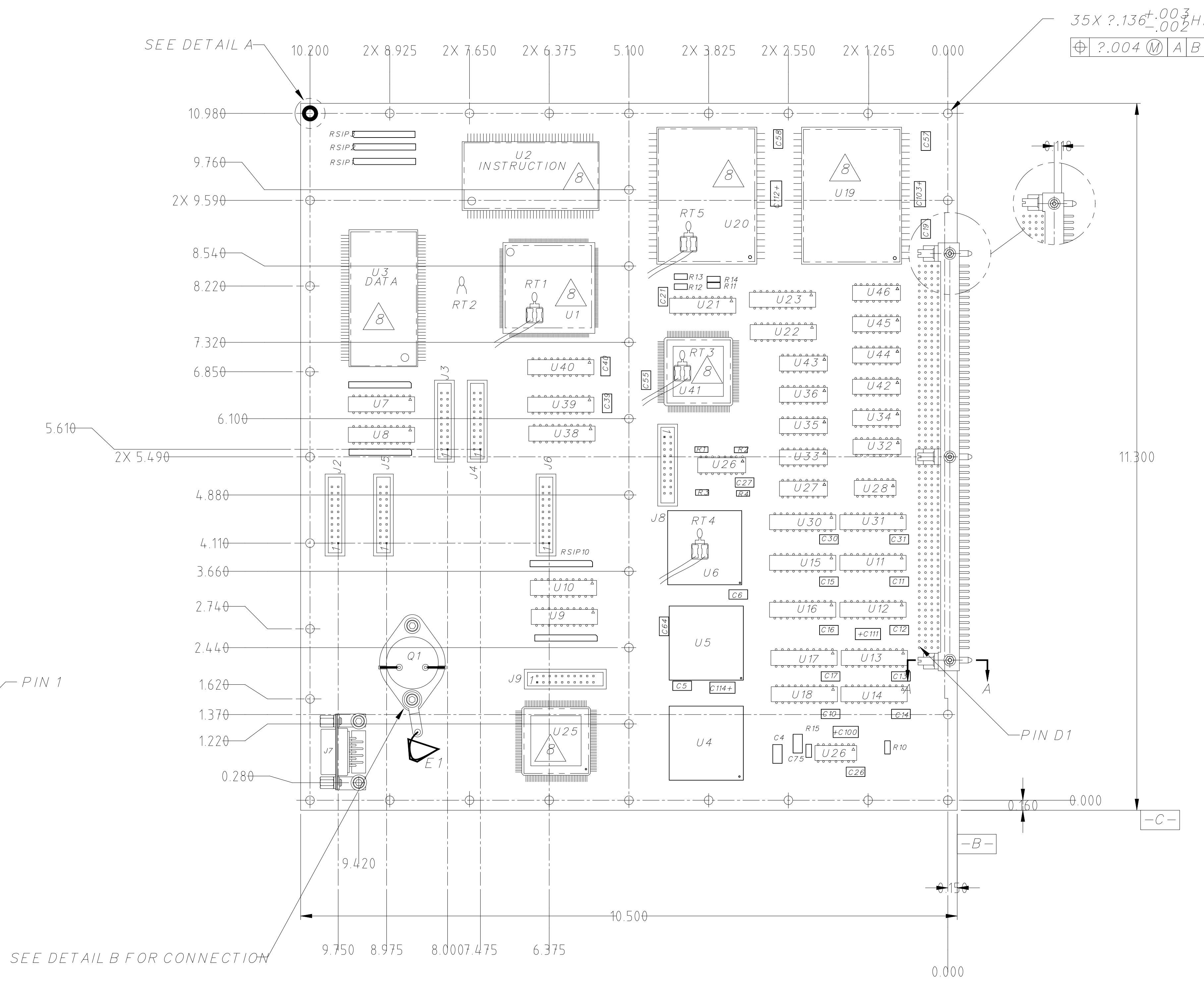
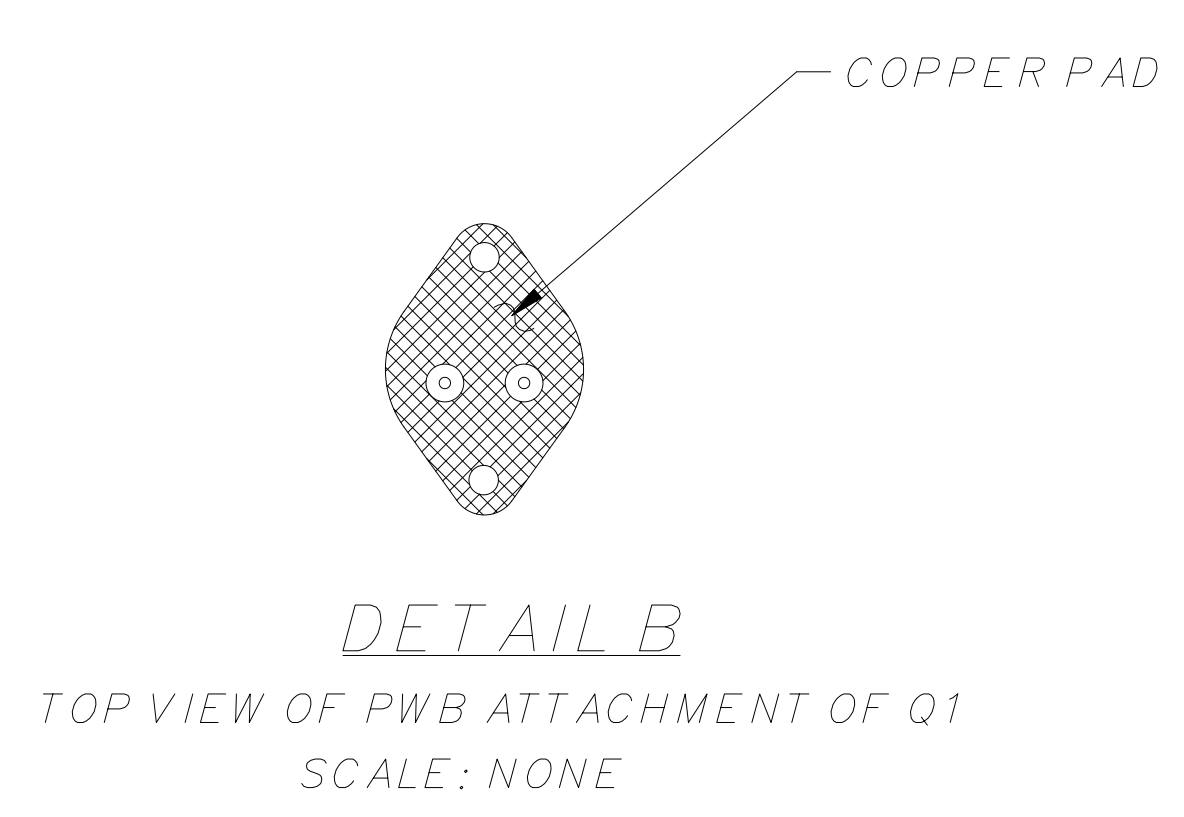
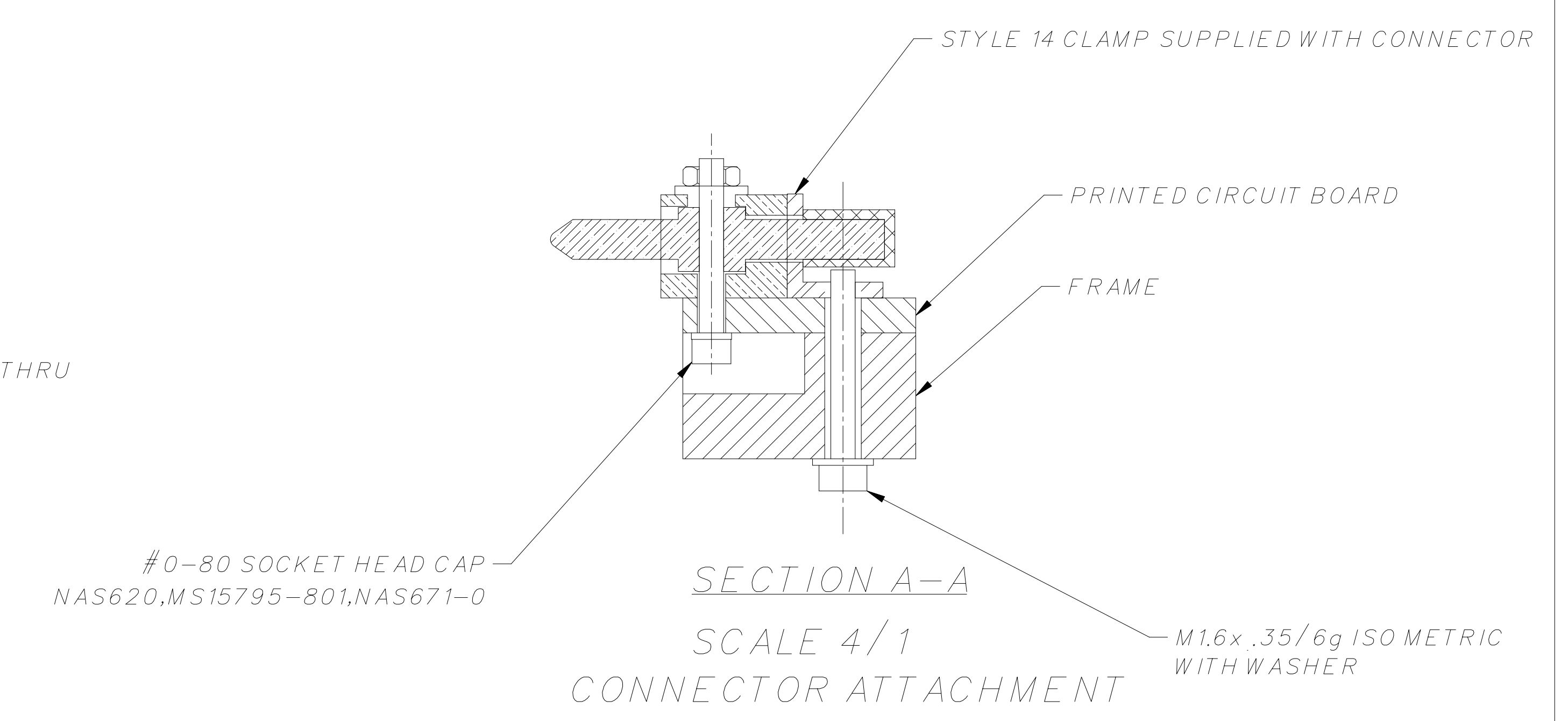
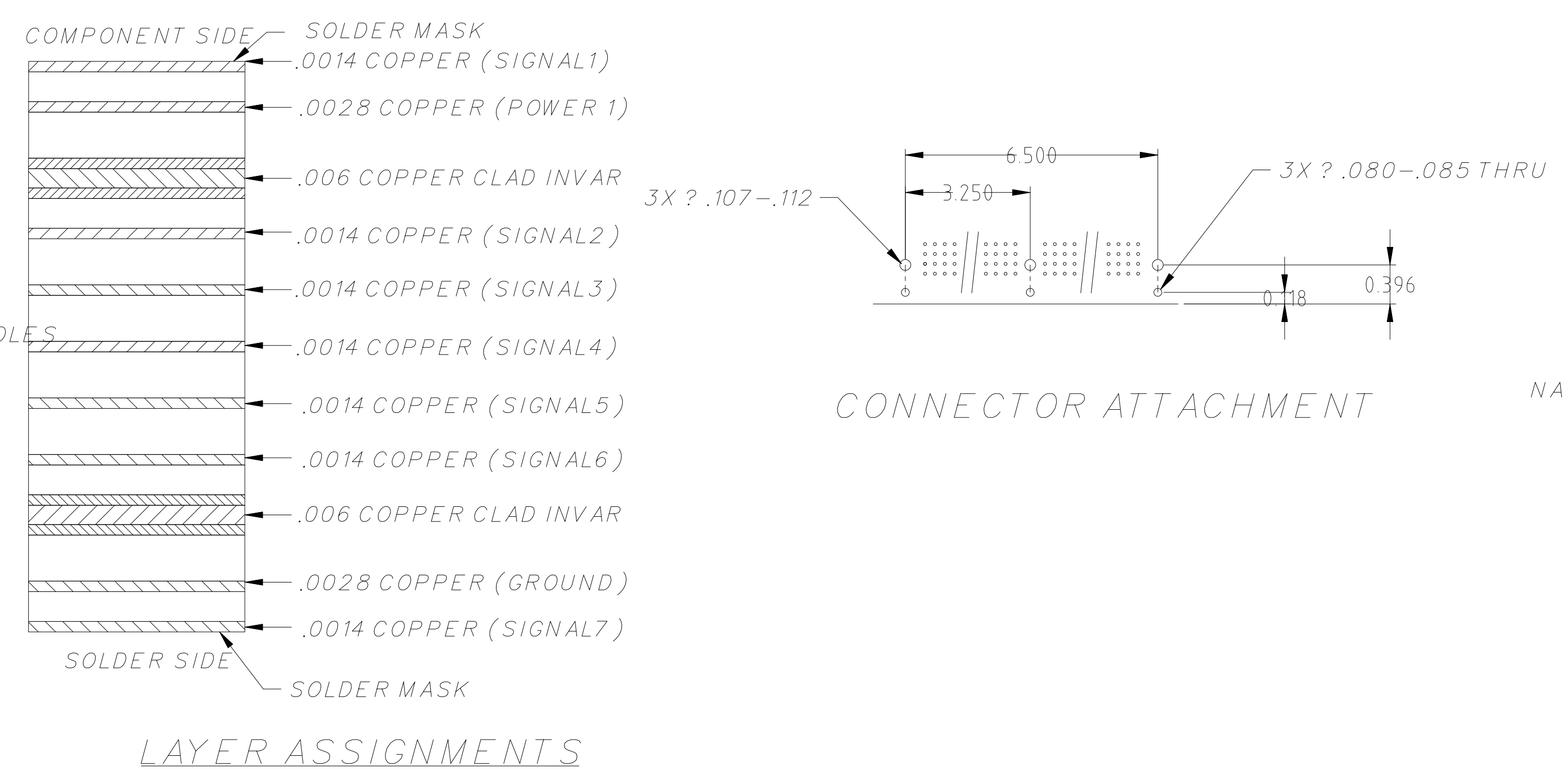


REVISIONS					
REV.	ECO NO.	DESCRIPTION	CHECKED	APPROVED	DATE
A	36-461	INITIAL RELEASE	FJK	RFG	9/26/95
B	36-489	ADD PREP PARTS	FJK	RFG	9/26/95
C	36-519	UPDATED FOR CALRITY			



- NOTES
- ITEM SHALL BE DESIGNED AND FABRICATED IAW 36-02105.
  - PLACE COMPONENTS APPROX. AS SHOWN.
  - ALL CORNER RADII .062.
  - 10z. COPPER, SOLDER SIDE ONLY. ATTACH TO C1C LAYERS. NO SOLDER MASK IN THIS AREA. NO PLATED THROUGH HOLES, SURFACE TRACE OR ANNULAR RING WITHIN .05 OF THE Cu BAND. SEE VIEW B-B.
  - CONNECT COPPER/INVAR COPPER LAYERS TO EACH OTHER AT  $\pm 0.136$  MOUNTING HOLES. SEE DETAIL A.
  - MARKING INFORMATION:  
- PWB NAME -- FRONT END PROCESSOR  
- PWB P/N -- 36-30302.01 REV A
  - LOCATE J2-6 AS SHOWN.
  - NO TRACES, FEEDTHROUGH HOLES OR SOLDERMASK UNDER THIS COMPONENT
  - THICKNESS OF DIELECTRIC OF LAYER ASSIGNMENT SHOWN FOR REFERENCE. OVERALL THICKNESS INCLUDES PLATING.
  - DO NOT PLATE CONNECTOR MOUNTING HOLES.
  - SIZE E1 FOR 20 AWG STRANDED WIRE.
  - LAYOUT UNIQUE COMPONENTS IAW 36-02106.



INTERPRET DIMENSIONS AND TOLERANCES IAW ANSI Y14.5M-1982		NAME		DATE	MASSACHUSETTS INSTITUTE OF TECHNOLOGY CENTER FOR SPACE RESEARCH CAMBRIDGE, MA 02139
UNLESS OTHERWISE SPECIFIED DIMENSIONS ARE IN INCHES TOLERANCE: ANGLES $\pm 1^\circ$ 3 PLACE DECIMALS $\pm .005$ 2 PLACE DECIMALS $\pm .01$		DRAWN	M. LYONS	29/06/95	
MATERIAL		CHECKED	K. SPARLAN	9/26/95	
NEXT ASSEMBLY		APPROVED	R. GOEKE	9/26/95	OUTLINE FRONT END PROCESSOR
APPLICATION		RELEASED	D. GAGE	9/26/95	
20302.01	ACIS	SEE DATABASE			SIZE/CAGE CODE
	USED ON	INTERPRET DIMENSIONS AND TOLERANCES IAW ANSI Y14.5M-1982			DRG. NO.
					E 8023036-30302.0101C
					SCALE 1:1
					SHEET 1 OF 1