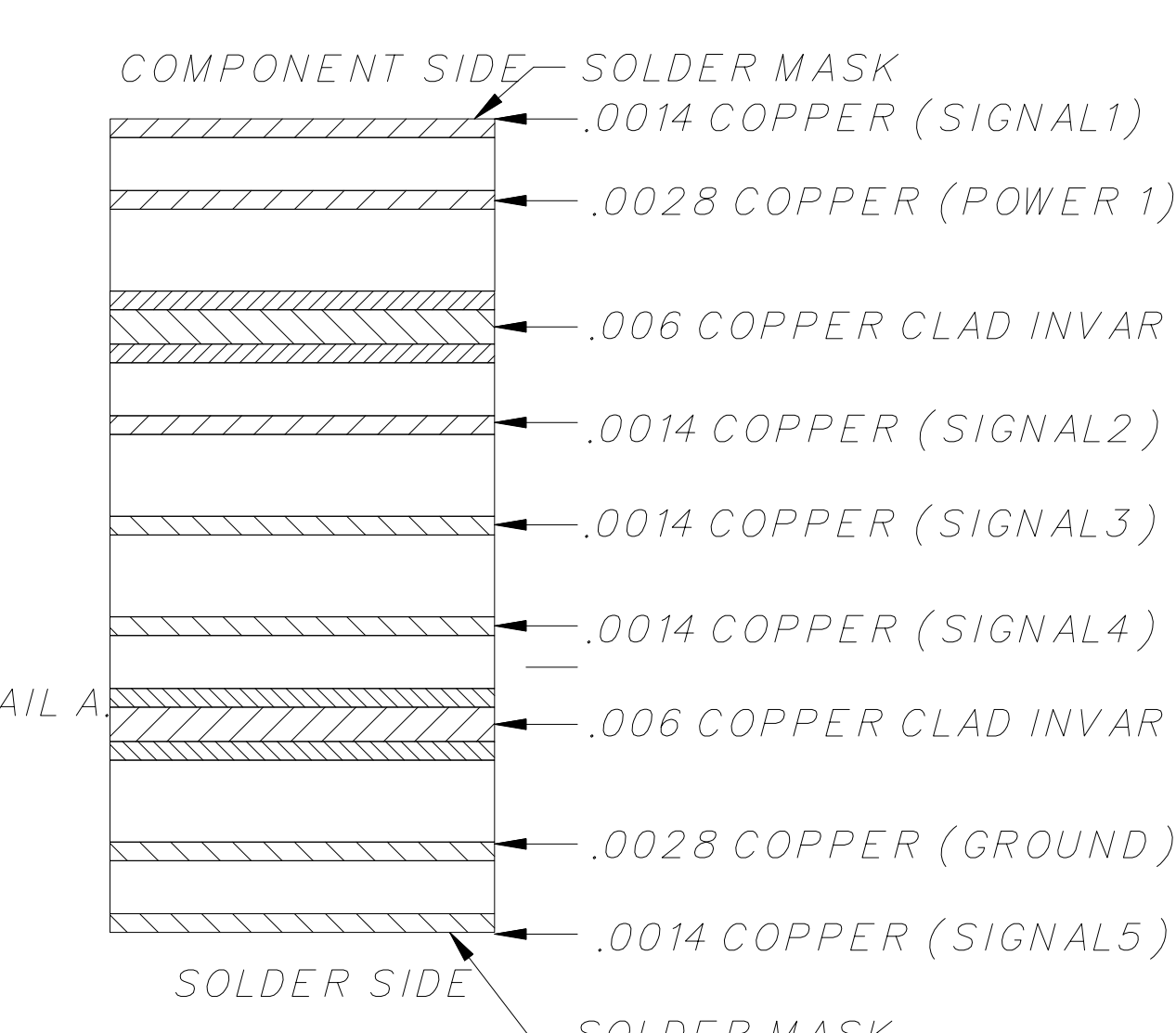
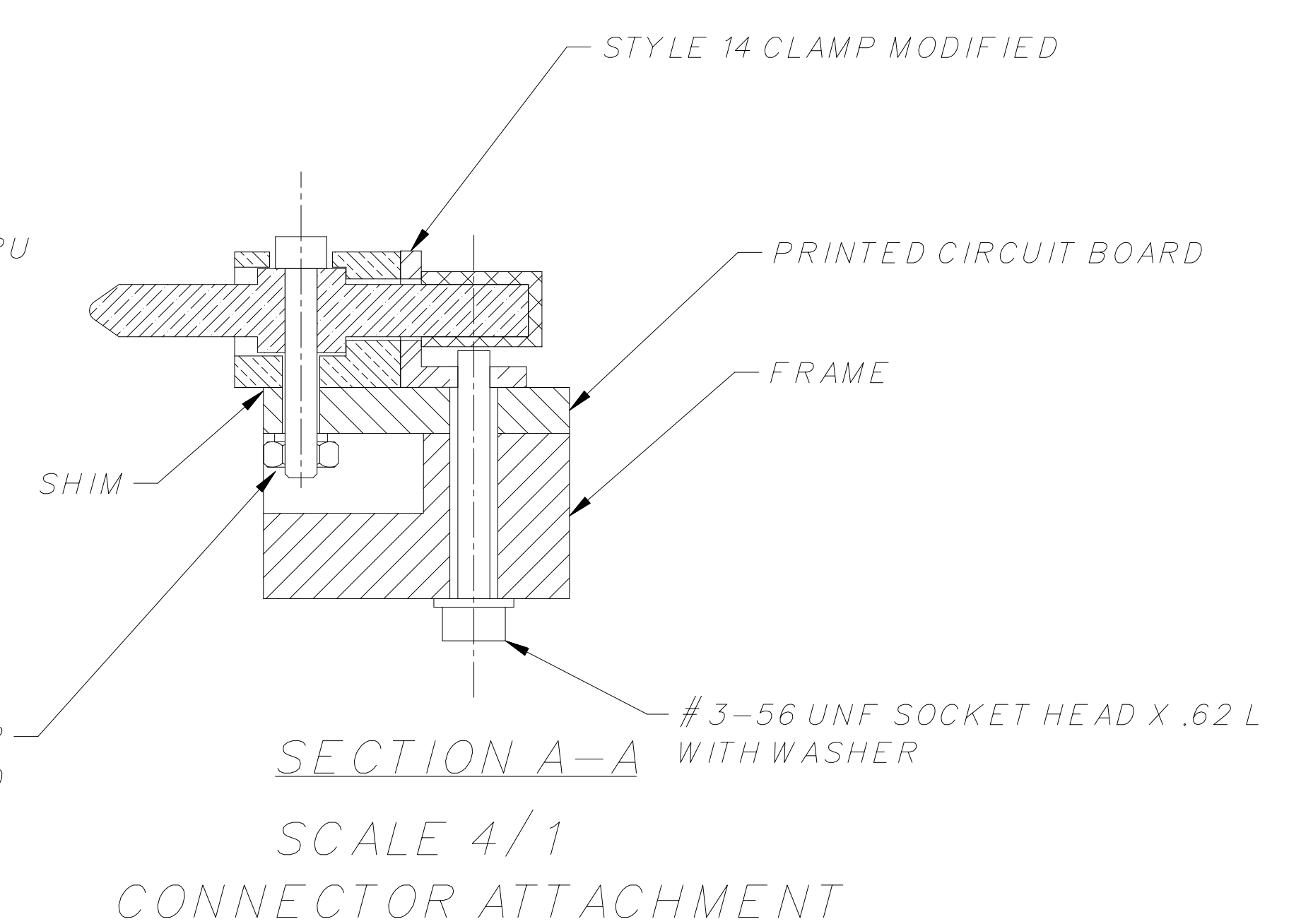
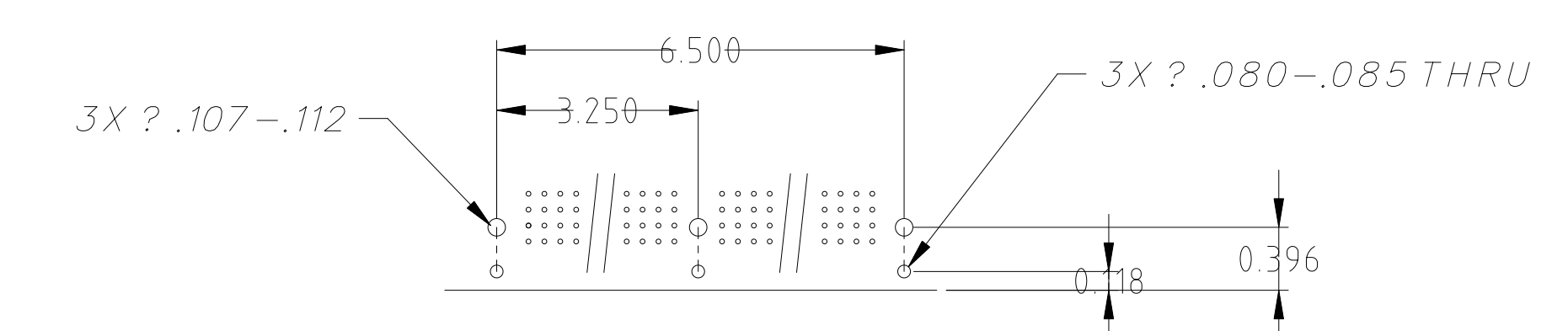
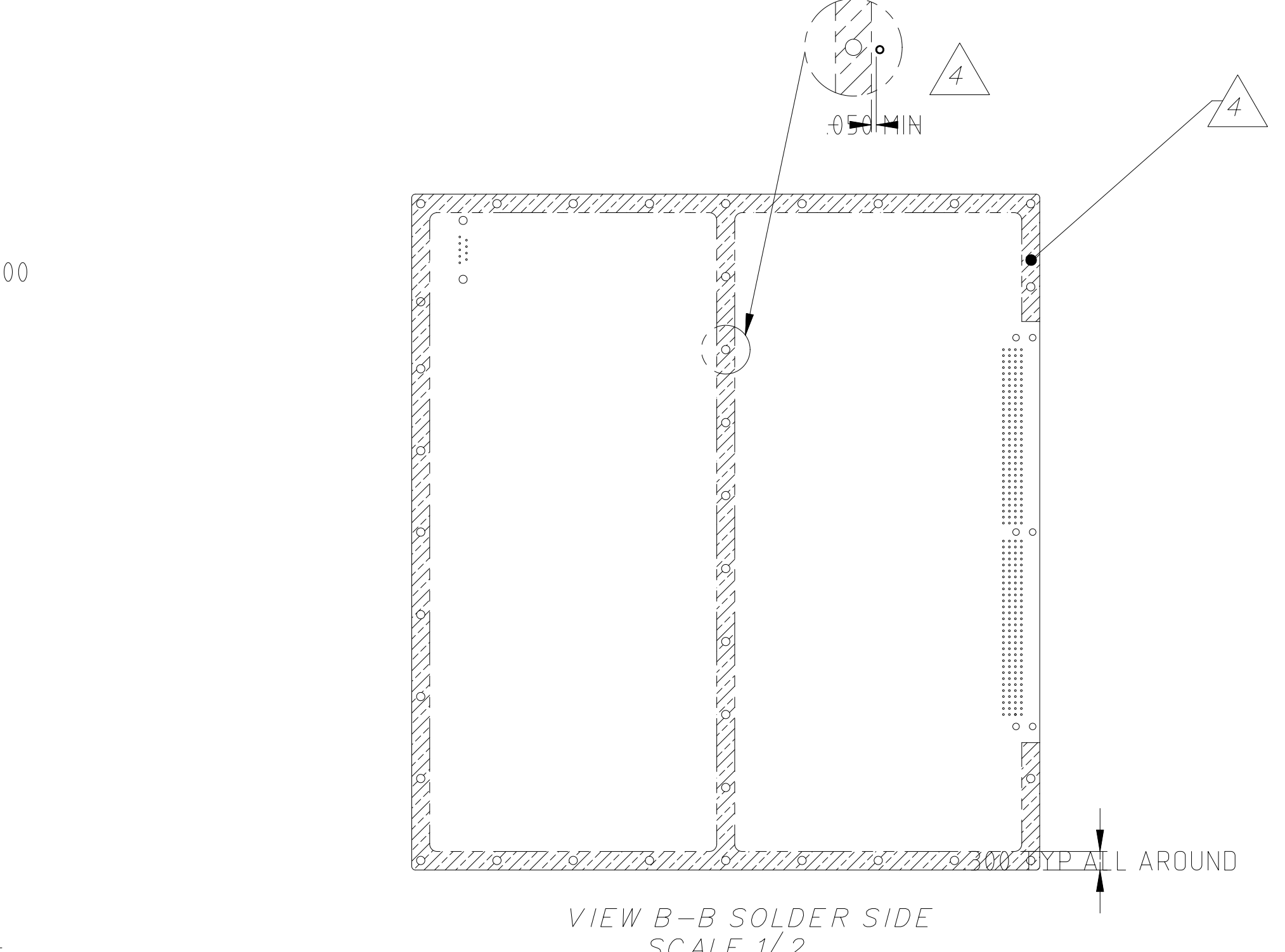
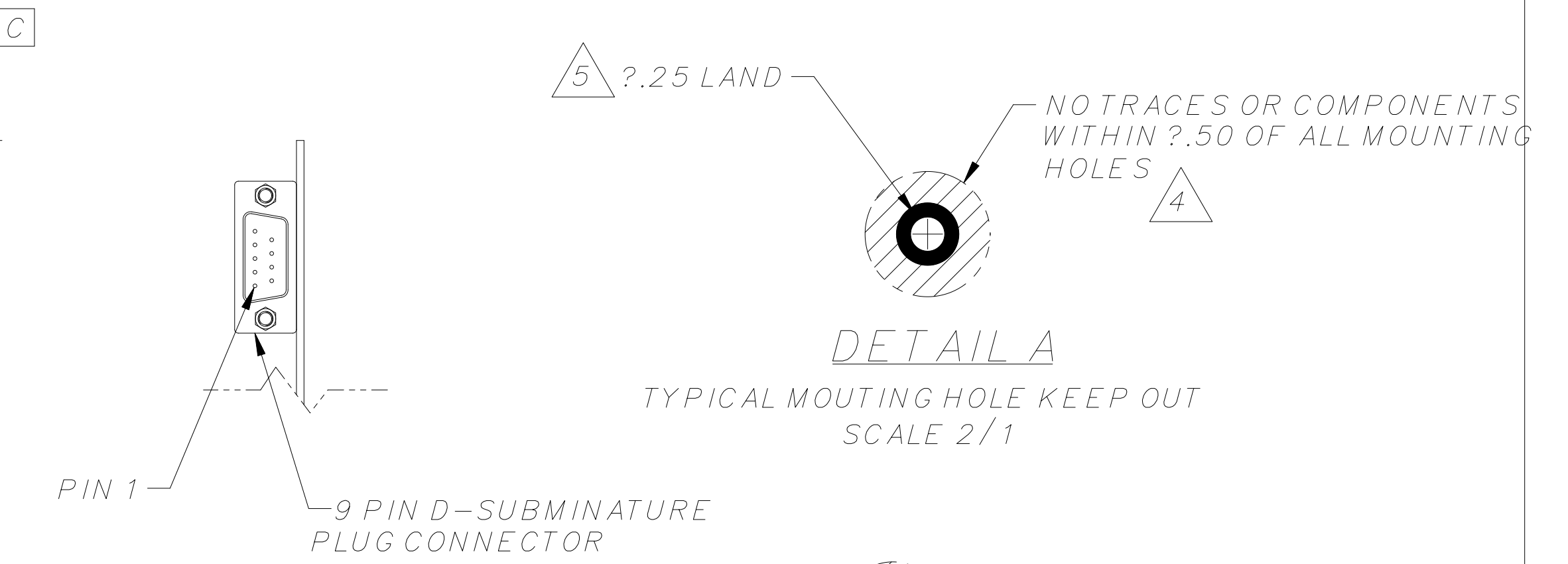
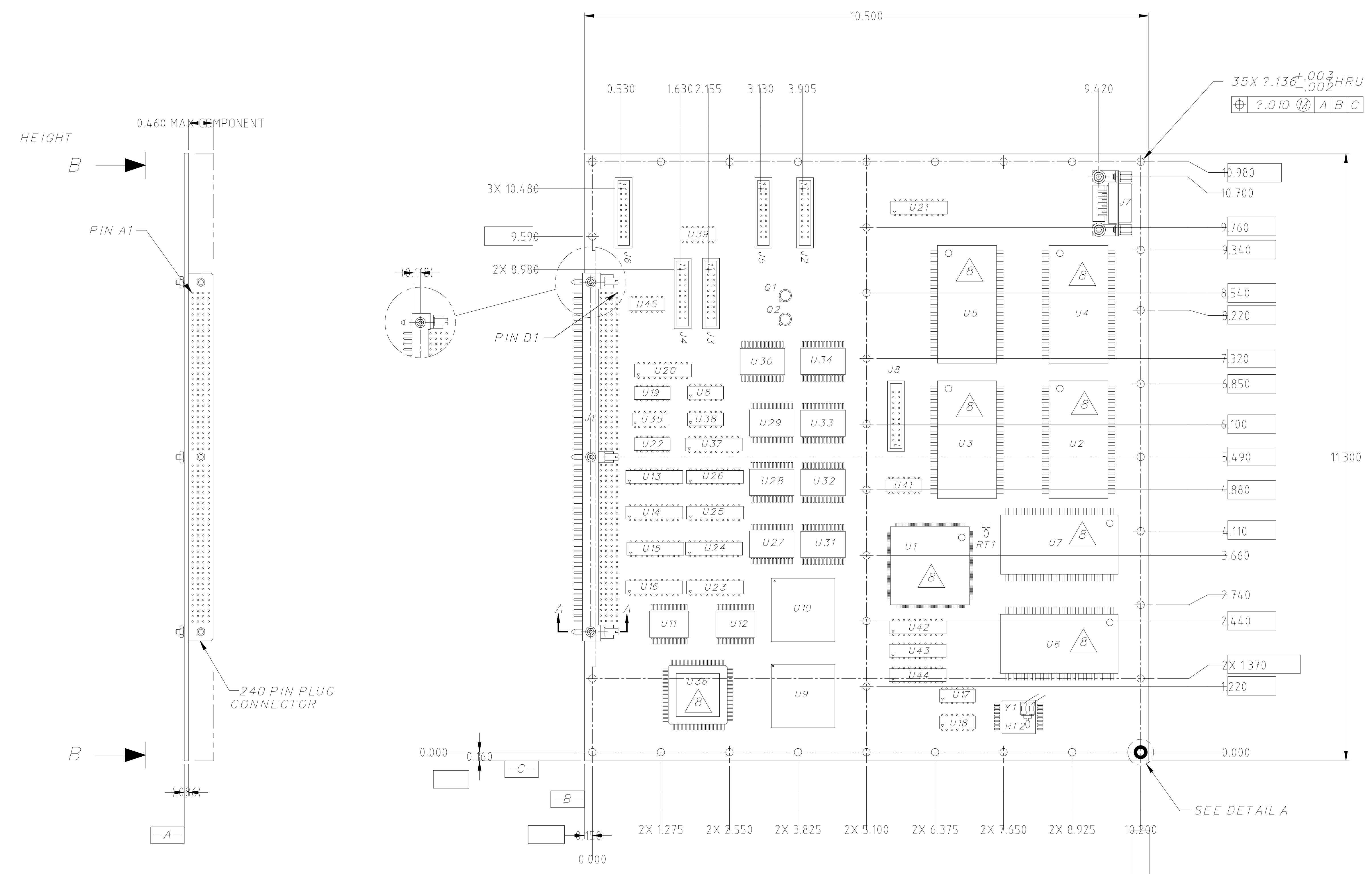


REVISIONS					
REV.	ECO NO.	DESCRIPTION	CHECKED	APPROVED	DATE
A	36-507	INITIAL RELEASE			



- NOTES
- ITEM SHALL BE DESIGNED AND FABRICATED IAW 36-02105.
  - PLACE COMPONENTS APPROX. AS SHOWN.
  - ALL CORNER RADII .062.
  - 10z. COPPER, SOLDER SIDE ONLY. ATTACH TO CIC LAYERS. NO SOLDER MASK IN THIS AREA. NO PLATED THROUGH HOLES, SURFACE TRACE OR ANNULAR RING WITHIN .05 OF THE Cu BAND SEE VIEW B-B.
  - CONNECT COPPER/INVAR COPPER LAYERS TO EACH OTHER AT .136 HOLES. SEE DETAIL A
  - MARKING INFORMATION:  
- PWB NAME -- BACK END PROCESSOR  
- PWB P/N -- 36-30301.01 REV A
  - LOCATE J1-7 AS SHOWN.
  - NO TRACES, FEEDTHROUGH HOLES OR SOLDERMASK UNDER THIS COMPONENT
  - THICKNESS OF DIELECTRIC OF LAYER ASSIGNMENT SHOWN FOR REFERENCE. OVERALL THICKNESS INCLUDES PLATING.
  - DO NOT PLATE CONNECTOR MOUNTING HOLES.
  - LAYOUT UNIQUE COMPONENTS IAW 36-02106.

INTERPRET DIMENSIONS AND TOLERANCES IAW ANS1 Y14.5M-1982		NAME	DATE	MASSACHUSETTS INSTITUTE OF TECHNOLOGY CENTER FOR SPACE RESEARCH CAMBRIDGE, MA 02139	
36-20301.01	ACIS	DRW/M. LYONS	21Jan86	CSR	
NEXT ASSEMBLY	USED ON	CHECKED			
APPLICATION		APPROVED			
		RELEASED			
MATERIAL		UNLESS OTHERWISE SPECIFIED DIMENSIONS ARE IN INCHES TOLERANCE: ANGLES 1/16 3 PLACE DECIMALS .005 2 PLACE DECIMALS .01		OUTLINE, BACK END PROCESSOR	
36-20301.01	ACIS	INTERPRET DIMENSIONS AND TOLERANCES IAW ANS1 Y14.5M-1982	WEIGHT	SIZE/CAGE CODE E 8023036-30301.0101A	REV. A
SCALE 1:1			SHEET 1 OF 1		