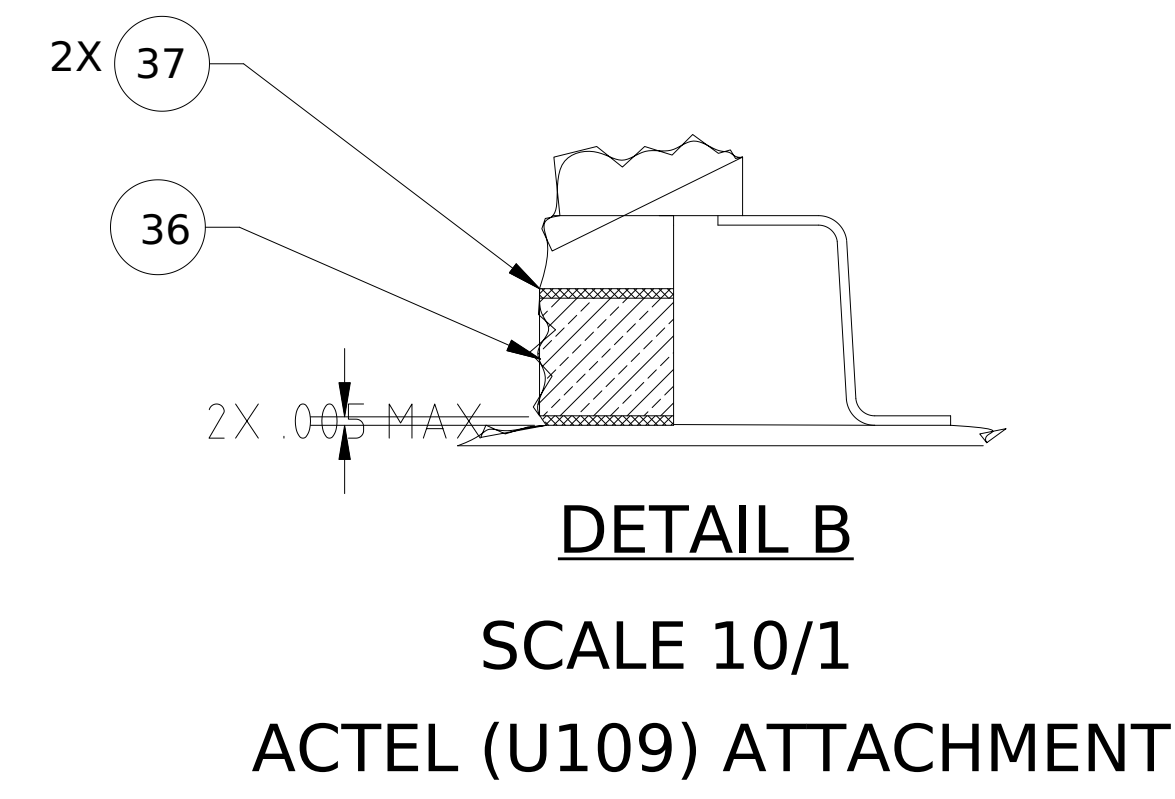
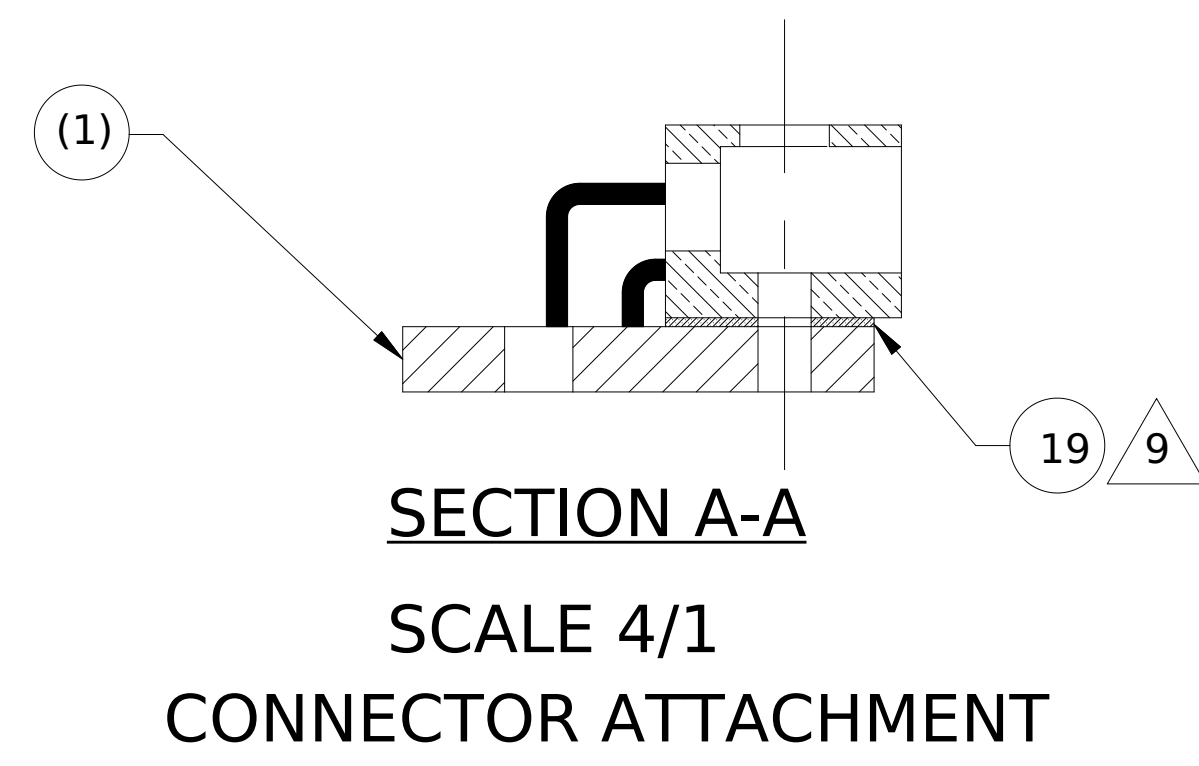
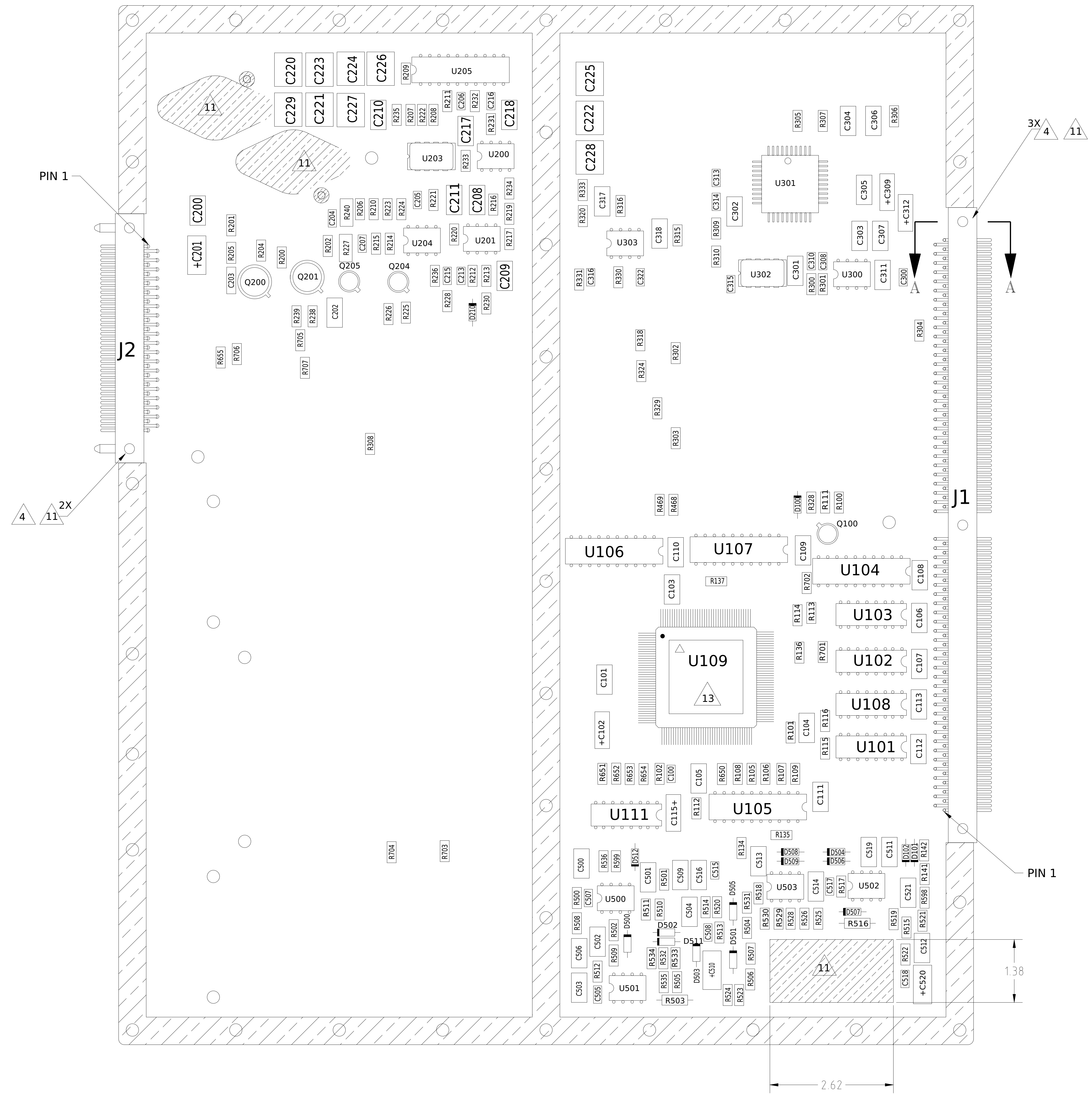


REVISIONS					
REV.	ECCO NO.	DESCRIPTION	CHECKED	APPROVED	DATE
A	36-684	INITIAL RELEASE	FJK	RFG	7/8/96
B	36-717	DESIGN UPDATE	FJK	RFG	8/9/96
C	36-738	DESIGN UPDATE	FJK	RFG	9/4/96
D	36-816	ADD ACTEL SHIM	FJK	RFG	11/29/96
E	36-898	AS BUILT CONFIGURATION			



30 COMPONENT HEIGHT
0.90 MAX LEAD PROTRUSION



NOTES:

1. LABEL ASSEMBLY SERIAL NUMBER IN LOCATION SHOWN PER A.W.O. USING F/N 9.
2. RECORD EPOXIES USED, MIX RATIO, EXPIRATION DATES, ETC.
3. SOLDERING TO BE IAW NASA SPECIFICATION NHB5300.4(3A-1).
4. TORQUE TEMPORARY HARDWARE TO 16 IN-OZ PRIOR TO SOLDERING. CENTER CONNECTOR PRIOR TO TORQUING.
5. FORM LEADS IAW 36-02106.
6. INSTALL PROTECTIVE COVER, F/N 32, ON J1 PRIOR TO SHIPMENT.
7. CLEAN ALL HARDWARE IAW MIT PROCEDURE 36-02027 PRIOR TO ASSEMBLY.
8. HANDLE ASSEMBLY IAW MIT SPECIFICATION 99-01003.
9. SHIM CONNECTOR IAW MIT PROCEDURE 36-02025.
10. DO NOT INSTALL Q202, Q203, Q500, Q501, R528-536, R598 AND R599.
11. MASK FOR SOLDER AS INDICATED:
 - CONNECTOR MOUNTING HARDWARE.
 - PLATED MOUNTING HOLES NEAR SIDE.
 - Q202, 203, 500, 501 PADS FAR SIDE.
 - PLATED BAND FAR SIDE.
 - E1-2 BOTH SIDES.
12. INSTALL PROTECTIVE COVER, F/N 33, ON J2 PRIOR TO SHIPMENT.
13. SEE DETAIL B. CENTER F/N 36 ON THE PACKAGE.

UNLESS OTHERWISE SPECIFIED DIMENSIONS ARE IN INCHES TOLERANCE ANGLES ± 1° 3 PLACE DECIMALS = .005 2 PLACE DECIMALS = .01		NAME: Applied CAD	DATE: 7/11/96	MASSACHUSETTS INSTITUTE OF TECHNOLOGY CENTER FOR SPACE RESEARCH CAMBRIDGE, MA 02139	
MATERIAL: SEE DATABASE		CHECKED: F. Kasparian	APPROVED: R. Goeke	SANDERS SUBASSY - INTERFACE/ THERMAL CONTROL B	
NEXT ASSEMBLY USED ON: APPLICATION		RELEASED: D. Gage	DATE: 8/11/96	SIZE: E	CAGE CODE: 80230
WEIGHT:		DWG. NO.: 36-30262.97		REV.:	E
SCALE: 2:1		SHEET: 1 OF 1			