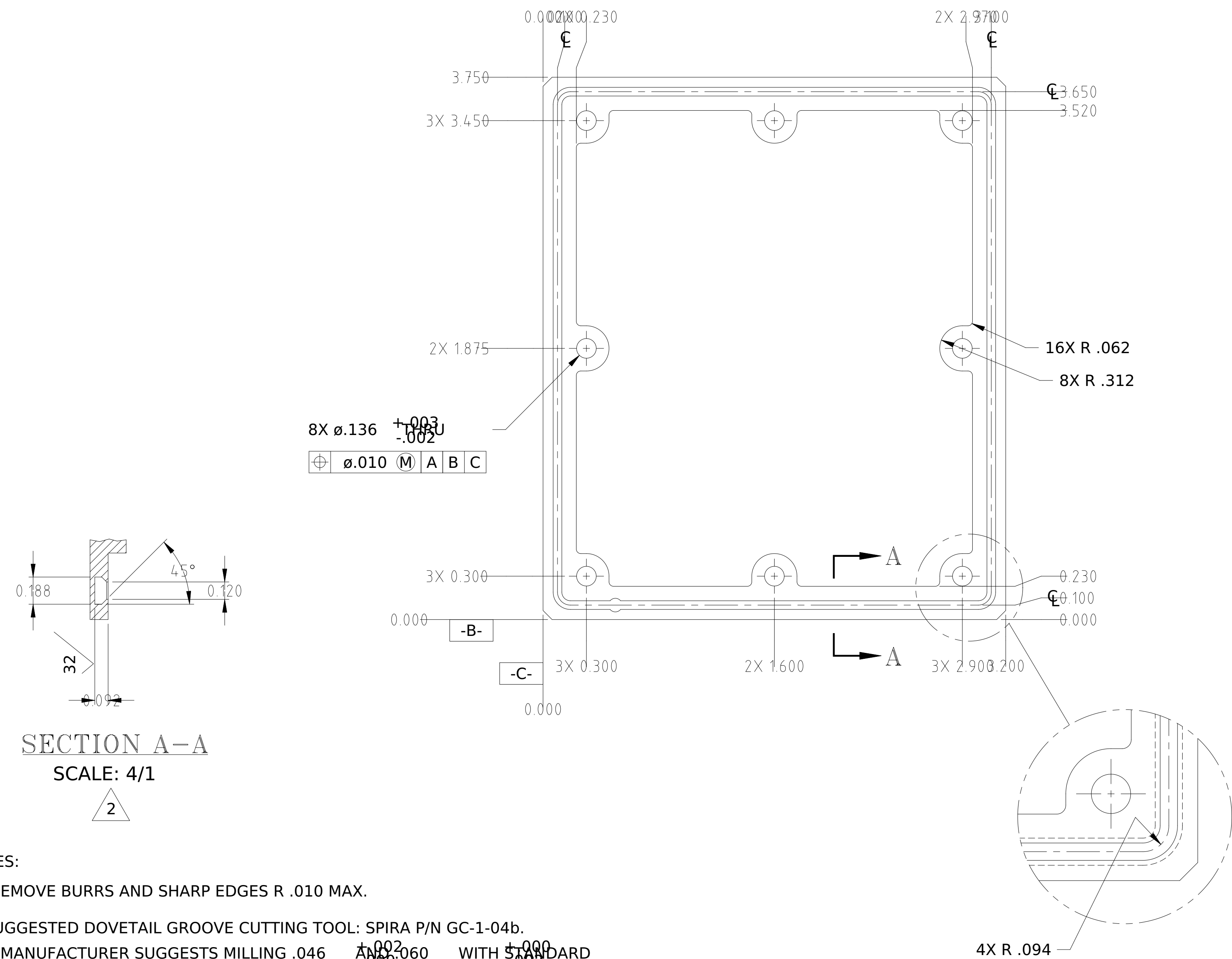


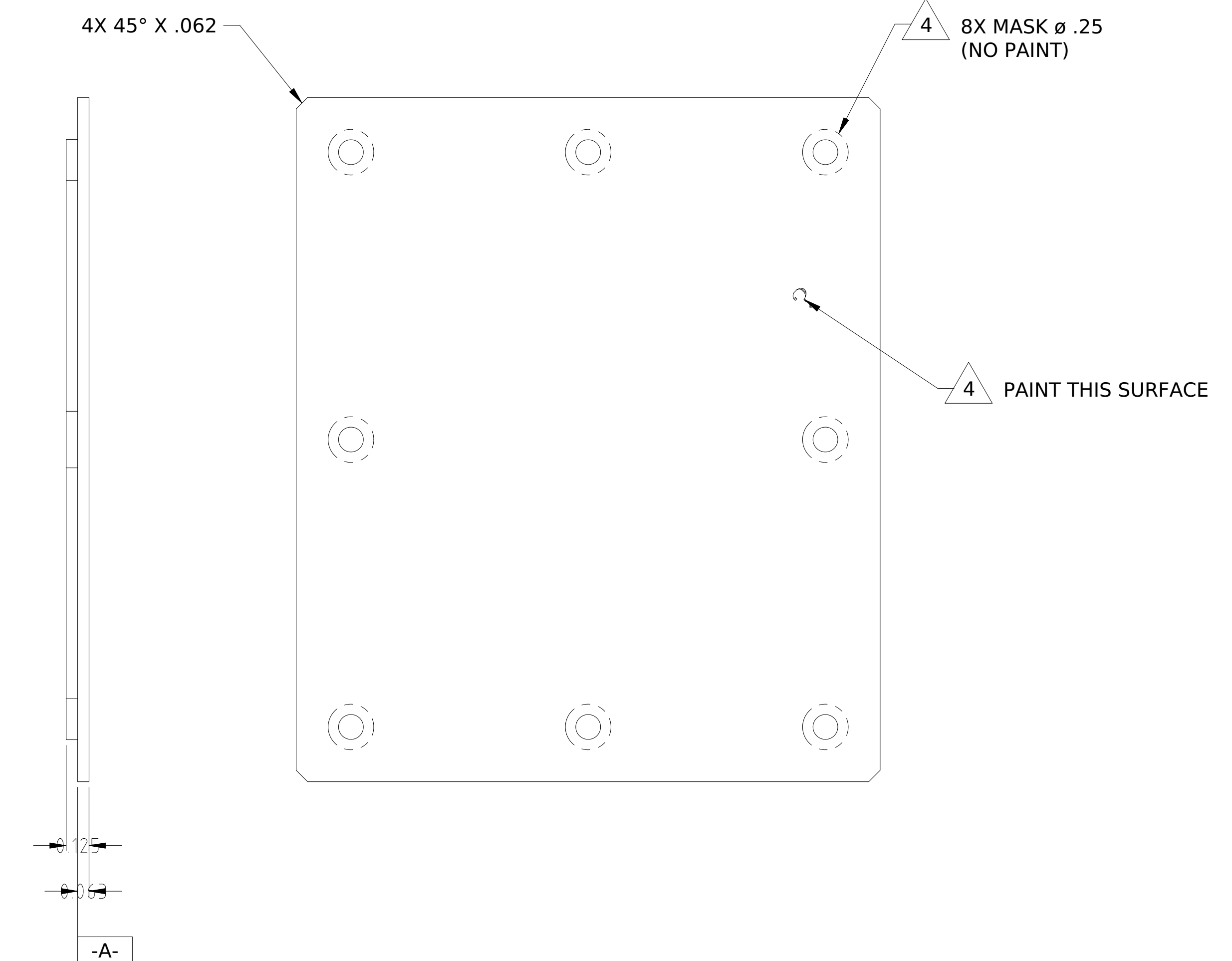
REVISIONS					
REV.	ECO NO.	DESCRIPTION	CHECKED	APPROVED	DATE
A	36-432	INITIAL RELEASE	FJK	RFG	1/2/96
B	36-674	ADD HANDLING NOTE			



SECTION A-A
SCALE: 4/1

NOTES:

1. REMOVE BURRS AND SHARP EDGES R .010 MAX.
2. SUGGESTED DOVETAIL GROOVE CUTTING TOOL: SPIRA P/N GC-1-04b. MANUFACTURER SUGGESTS MILLING .046 \pm .002 ϕ 0.060 WITH STANDARD TOOL FIRST, THEN FINISH WITH DOVETAIL CUTTING TOOL.
SPIRA MANUFACTURING CORP.
12721 SATICOY STREET SOUTH, UNIT B
NORTH HOLLYWOOD, CA 91605
(818) 764-8222
3. BAG AND TAG WITH MIT DRAWING NUMBER AND LATEST REVISION.
4. FINISH: CHEMICAL CONVERSION COAT ALL OVER PER MIL-C-5541, CLASS 3. MASK PART AS SHOWN. PRIME AND PAINT SURFACE INDICATED USING AEROGLAZE 9924 (PRIMER) AND AEROGLAZE Z306, BLACK (PAINT) IAW MIT SPECIFICATION 36-02028.
5. HANDLE ITEM WITH POWDER FREE, CONTAMINATION FREE GLOVES DURING ALL POST FINSH OPERATIONS.



NAME		DATE		MASSACHUSETTS INSTITUTE OF TECHNOLOGY CENTER FOR SPACE RESEARCH CAMBRIDGE, MA 02139					
DRAWN	M.LYONS		29/10/95	DPA COVER, CONNECTOR, +Y					
CHECKED	F. Kasparian		1/2/96						
APPROVED	R. Goeke		1/2/96						
RELEASED	W. Mayer		1/2/96						
36-30300		MATERIAL ALUMINUM 6061-T6		SIZE	D 80230	DWG. NO.	36-20321	REV.	B
36-20300		ACIS		SCALE	2:1	SHEET		1 OF 1	
NEXT ASSEMBLY		USED ON		WEIGHT		INTERPRET DIMENSIONS AND TOLERANCES IAW ANSI Y14.5M-1982			