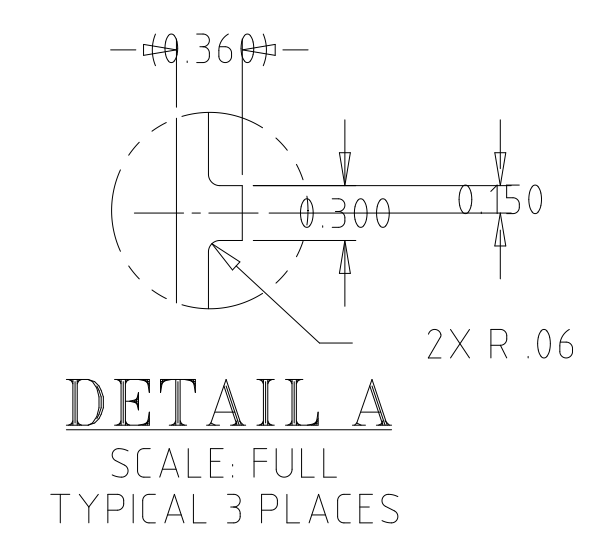
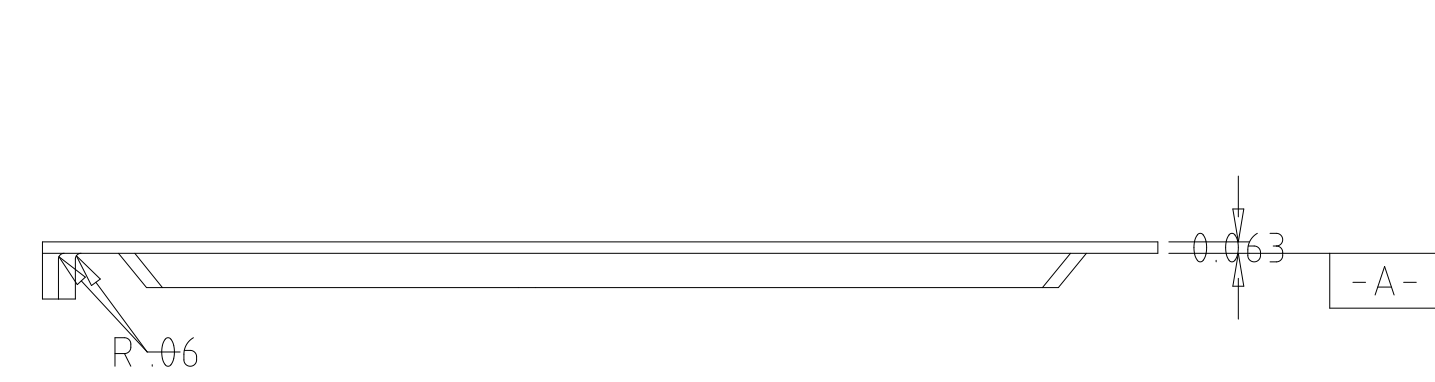
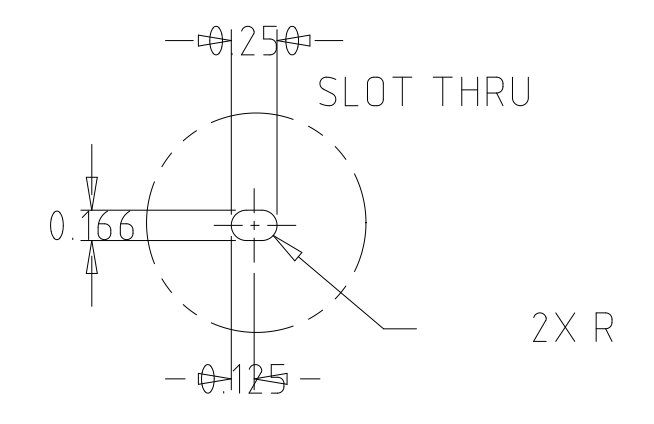


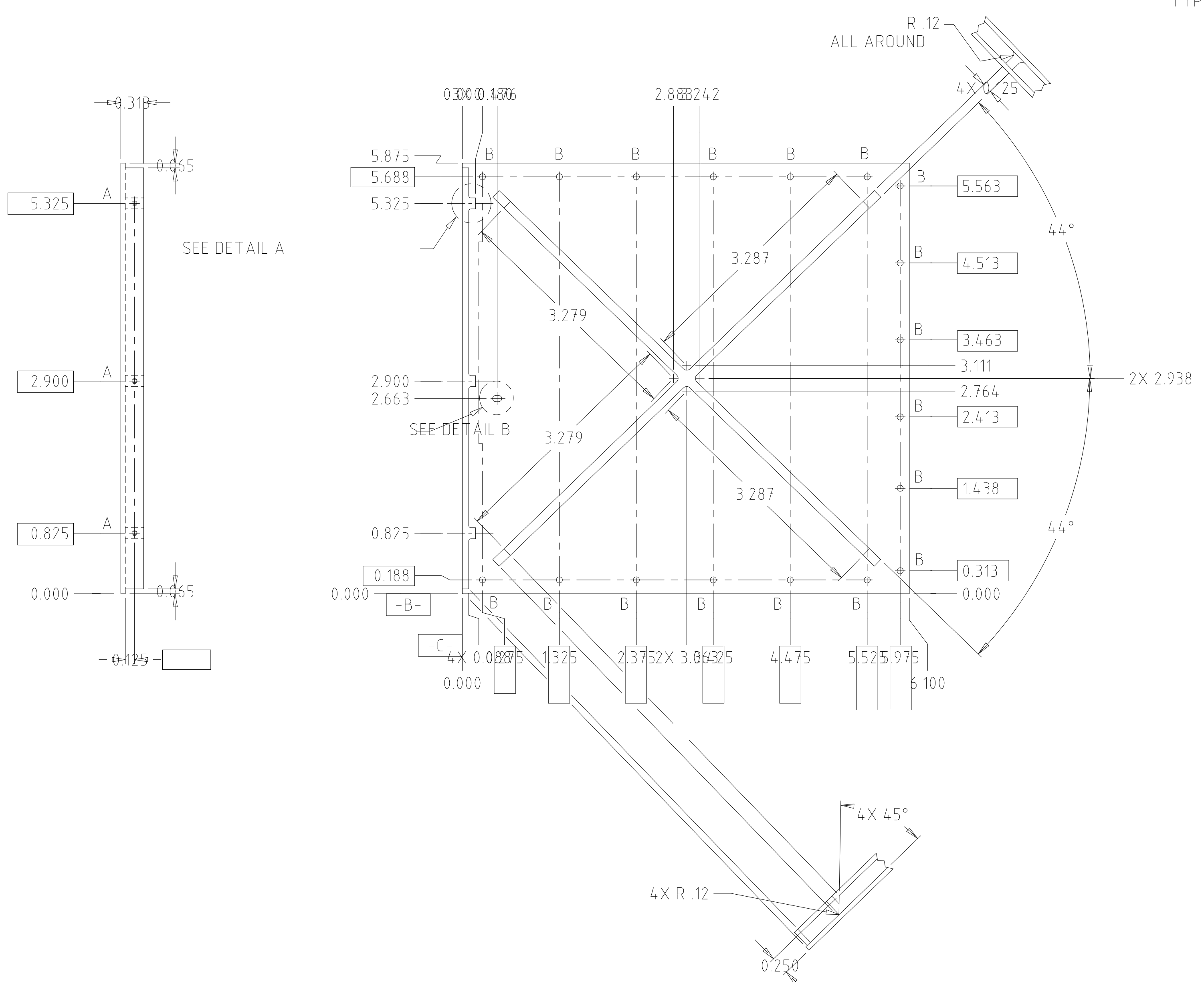
REVISIONS					
REV	ECO NO	DESCRIPTION	CHECKED	APPROVED	DATE
A	36-388	INITIAL RELEASE	FJK	RFG	02JAN96
B	36-388	MOVE 6-32 UNC HOLES			



DETAIL A
SCALE: FULL
TYPICAL 3 PLACES



DETAIL B
SCALE: FULL

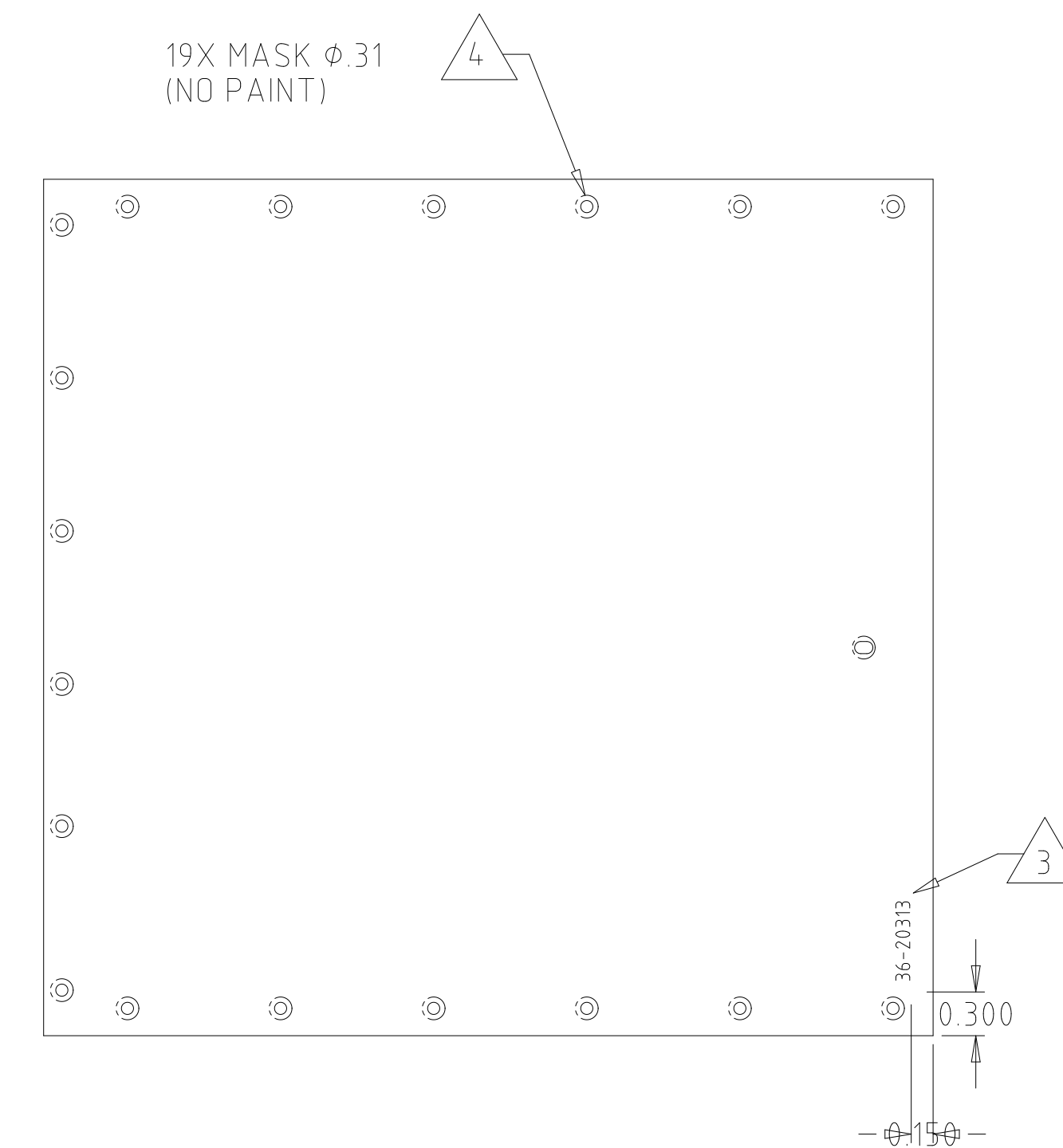
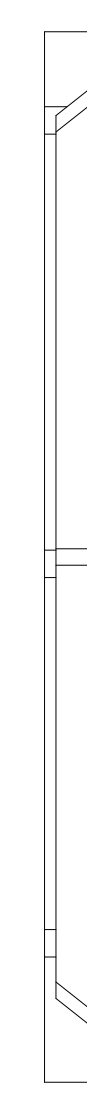
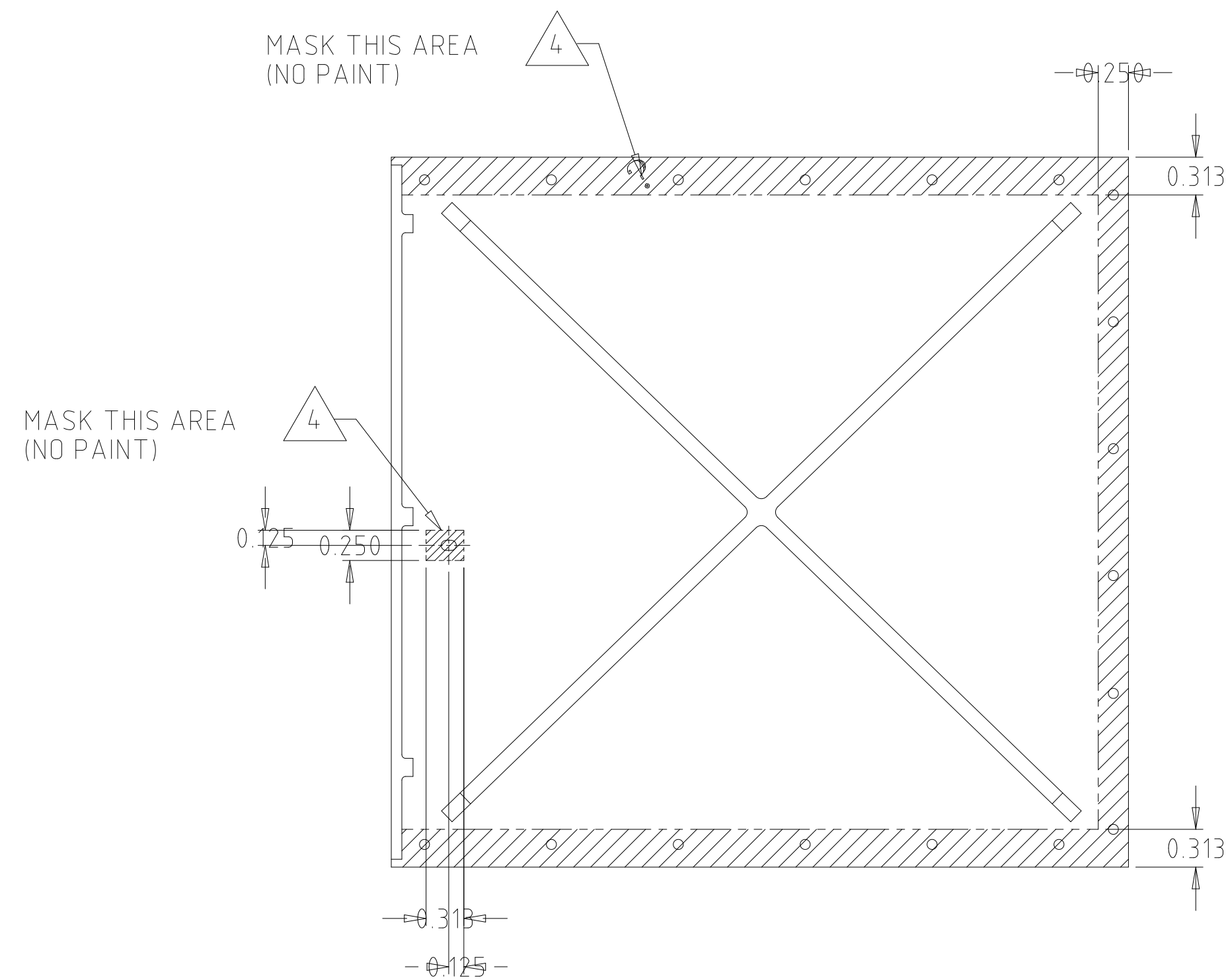


- NOTES:
1. REMOVE BURRS AND SHARP EDGES R .010 MAX.
 2. UNLESS OTHERWISE SPECIFIED ALL RADII R .12.
 3. ENGRAVE USING .19 HIGH CHARACTERS LOCATED APPROXIMATELY AS SHOWN. FILL WITH FN 3 AFTER CHEMICAL FILM AND PAINT.
 4. FINISH: CHEMICAL CONVERSION COAT ALL OVER PER MIL-C-5541, CLASS 3. MASK PART PER SHEET 2 OF THIS DRAWING AND PRIME AND PAINT REMAINING SURFACES USING AEROGLAZE 9924 (PRIMER) AND AEROGLAZE Z306, BLACK (PAINT).

HOLE CHART		
HOLE	DESCRIPTION	QTY
A	$\phi .147^{+.003}_{-.002}$ THRU, TAP THRU FOR No. 6-32 UNC HELICAL STI. DO NOT INSTALL STI. $\oplus \phi .010 \text{ (M) } C A B$	3
B	$\phi .166^{+.003}_{-.002}$ THRU $\oplus \phi .010 \text{ (M) } A B C$	18

NAME		DATE		MASSACHUSETTS INSTITUTE OF TECHNOLOGY CENTER FOR SPACE RESEARCH CAMBRIDGE, MA 02139							
DRAWN	M.LYONS		29MAY95	DPA COVER, -X							
CHECKED	F.KASPARIAN		02JAN96								
APPROVED	R.F.GOEKE		02JAN96								
RELEASED	D.GAGE		02JAN96								
36-20300	ACIS	UNLESS OTHERWISE SPECIFIED DIMENSIONS ARE IN INCHES TOLERANCE: ANGLES ± 1° 3 PLACE DECIMALS ± .005 2 PLACE DECIMALS ± .01		SIZE	D	CAGE CODE	80230	DWG NO	36-20313	REV.	B
NEXT ASSEMBLY	USED ON	MATERIAL ALUMINUM 6061-T6		WEIGHT		SCALE	1/2	SHEET	1 OF 2		
APPLICATION		INTERPRET DIMENSIONS AND TOLERANCES IAW ANSI Y14.5M-1982									

REVISIONS					
REV	ECO NO.	DESCRIPTION	CHECKED	APPROVED	DATE
		SEE SHEET 1			



PAINT AND MASKING INFORMATION

SIZE	CAGE CODE	DWG NO.	REV.
D	80230	36-20313	B
SCALE	SHEET		2 OF 2
1/2			