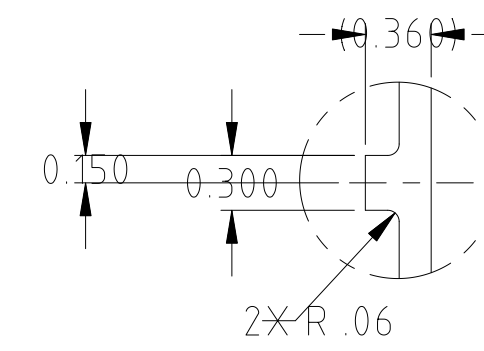
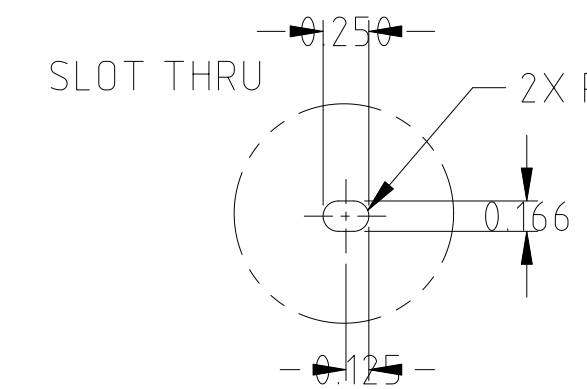


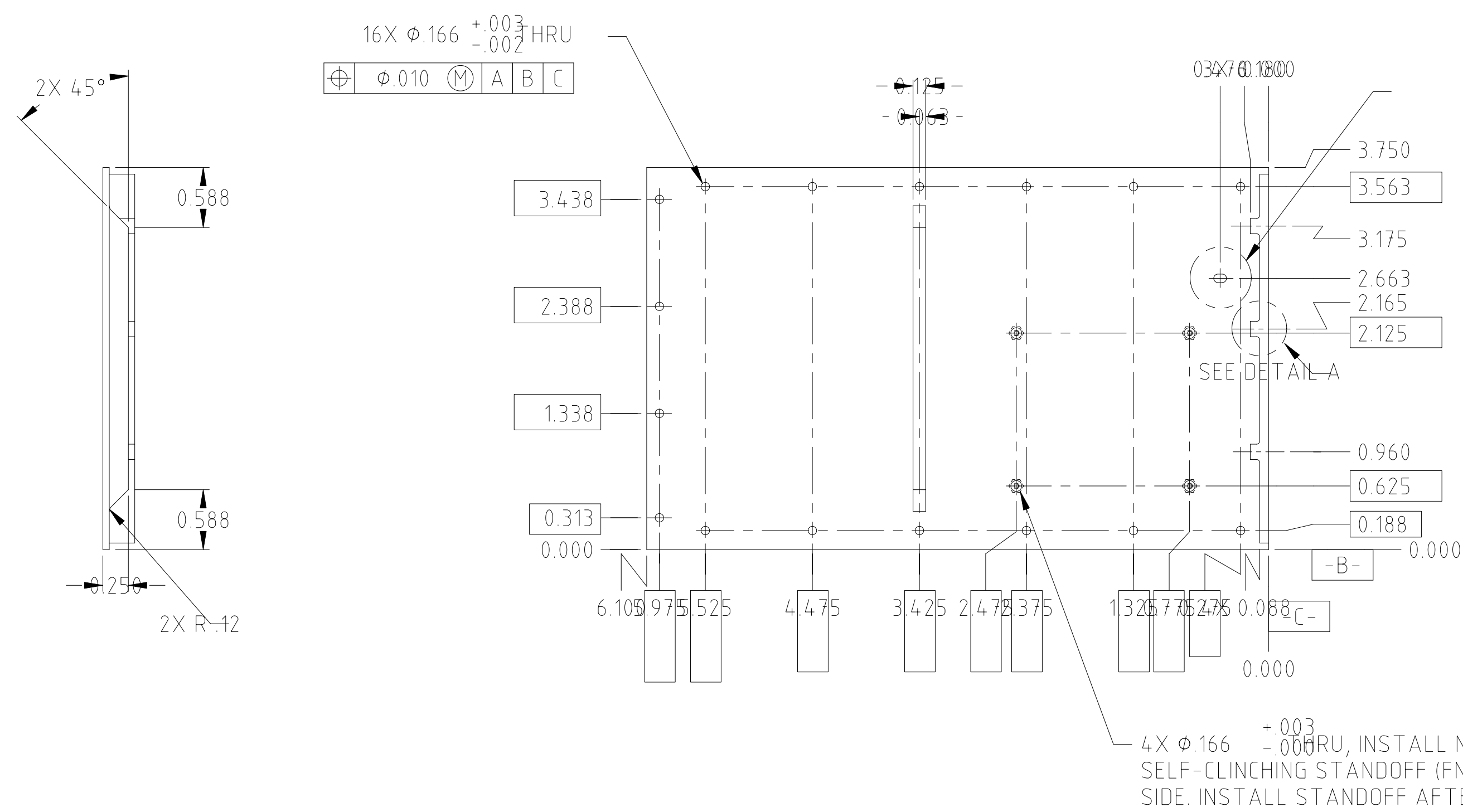
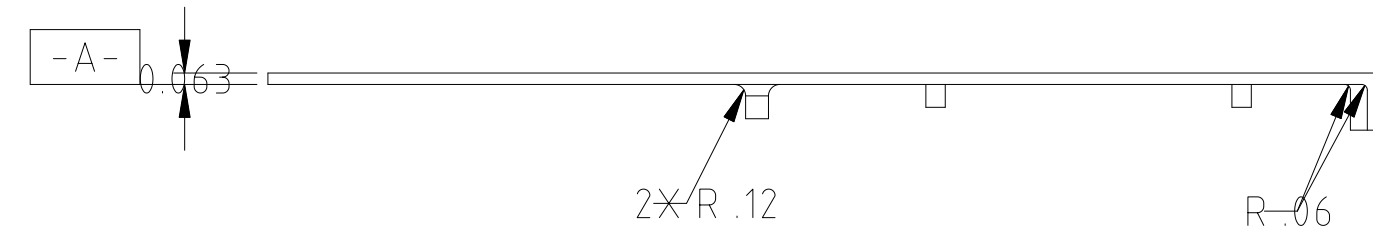
| REVISIONS | | | | | |
|-----------|---------|---------------------|---------|----------|---------|
| REV | ECO NO. | DESCRIPTION | CHECKED | APPROVED | DATE |
| A | 36-388 | INITIAL RELEASE | FJK | RFG | 02JAN96 |
| B | 36-499 | MOVE 6-32 UNC HOLES | | | |



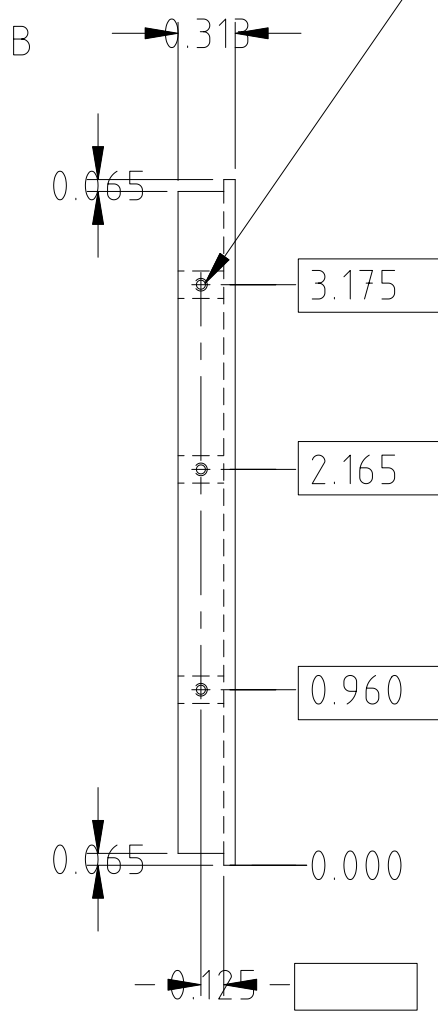
DETAIL A
SCALE: FULL
TYPICAL 3 PLACES



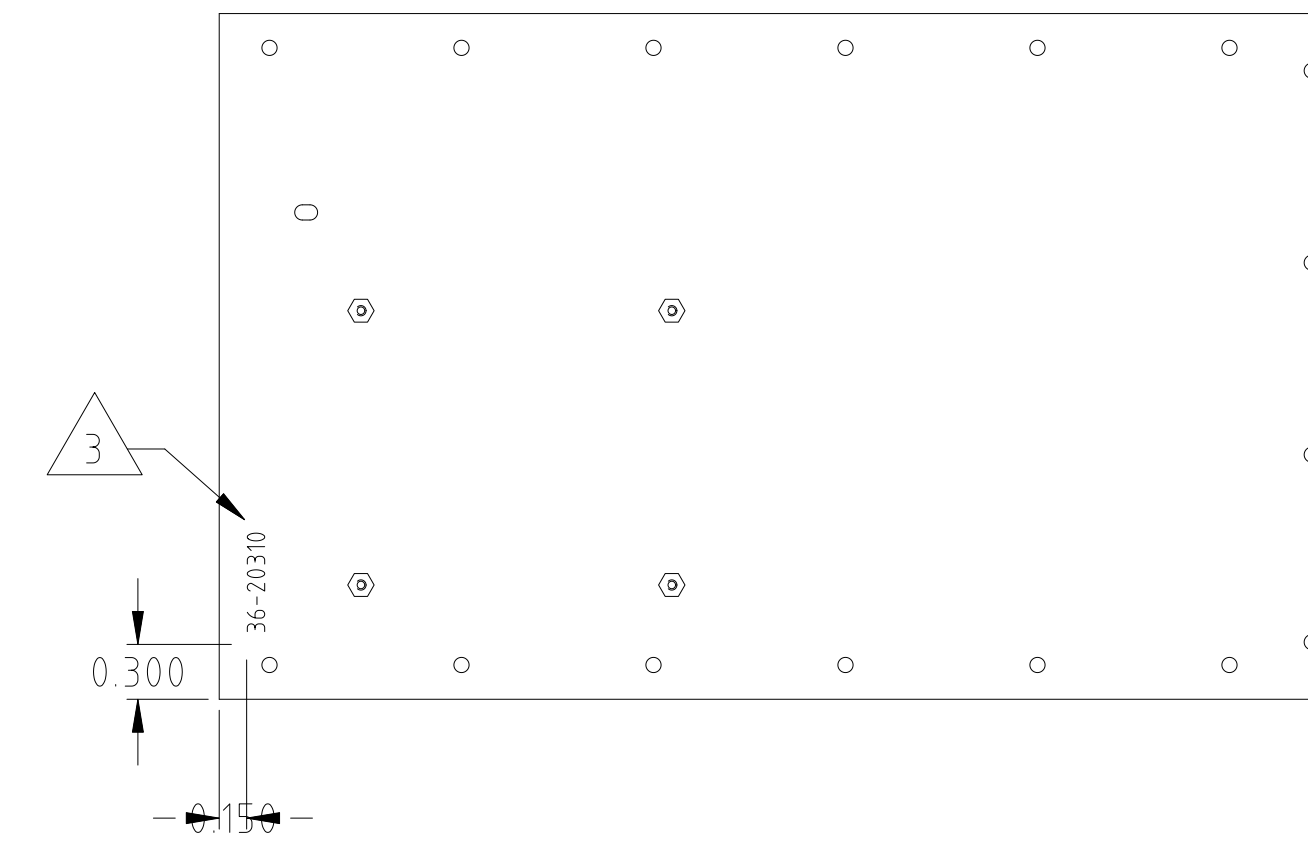
DETAIL B
SCALE: FULL



SEE DETAIL B
3X 0.147 +0.003/-0.002 THRU, TAP THRU FOR No. 6-32 UNC HELICAL STI. DO NOT INSTALL STI.



Feature symbol: a square with 'C', 'A', and 'B' in a row.



NOTES:

1. REMOVE BURRS AND SHARP EDGES R .010 MAX.
2. UNLESS OTHERWISE SPECIFIED ALL RADII R .12.
3. ENGRAVE USING .19 HIGH CHARACTERS LOCATED APPROXIMATELY AS SHOWN.
4. FINISH: CHEMICAL CONVERSION COAT PER MIL-C-5541, CLASS 3.

| | | | | | |
|---------------------|---------|--|------------------|---------------------------------------|----------|
| NAME | | DATE | | MASSACHUSETTS INSTITUTE OF TECHNOLOGY | |
| DRAWN M.LYONS | | 08APR95 | | CENTER FOR SPACE RESEARCH | |
| CHECKED F.KASPARIAN | | 02JAN96 | | CAMBRIDGE, MA 02139 | |
| APPROVED R.F.GOEKE | | 02JAN96 | | DPA COVER, +X | |
| RELEASED W.MAYER | | 02JAN96 | | | |
| 36-20300 | ACIS | MATERIAL | ALUMINUM 6061-T6 | SIZE | D |
| NEXT ASSEMBLY | USED ON | INTERPRET DIMENSIONS AND TOLERANCES IAW ANSI Y14.5M-1982 | | CAGE CODE | 80230 |
| APPLICATION | | | | DWG NO. | 36-20312 |
| | | | | WEIGHT | |
| | | | | SCALE | 1/2 |
| | | | | REV. | B |
| | | | | SHEET | 1 OF 1 |