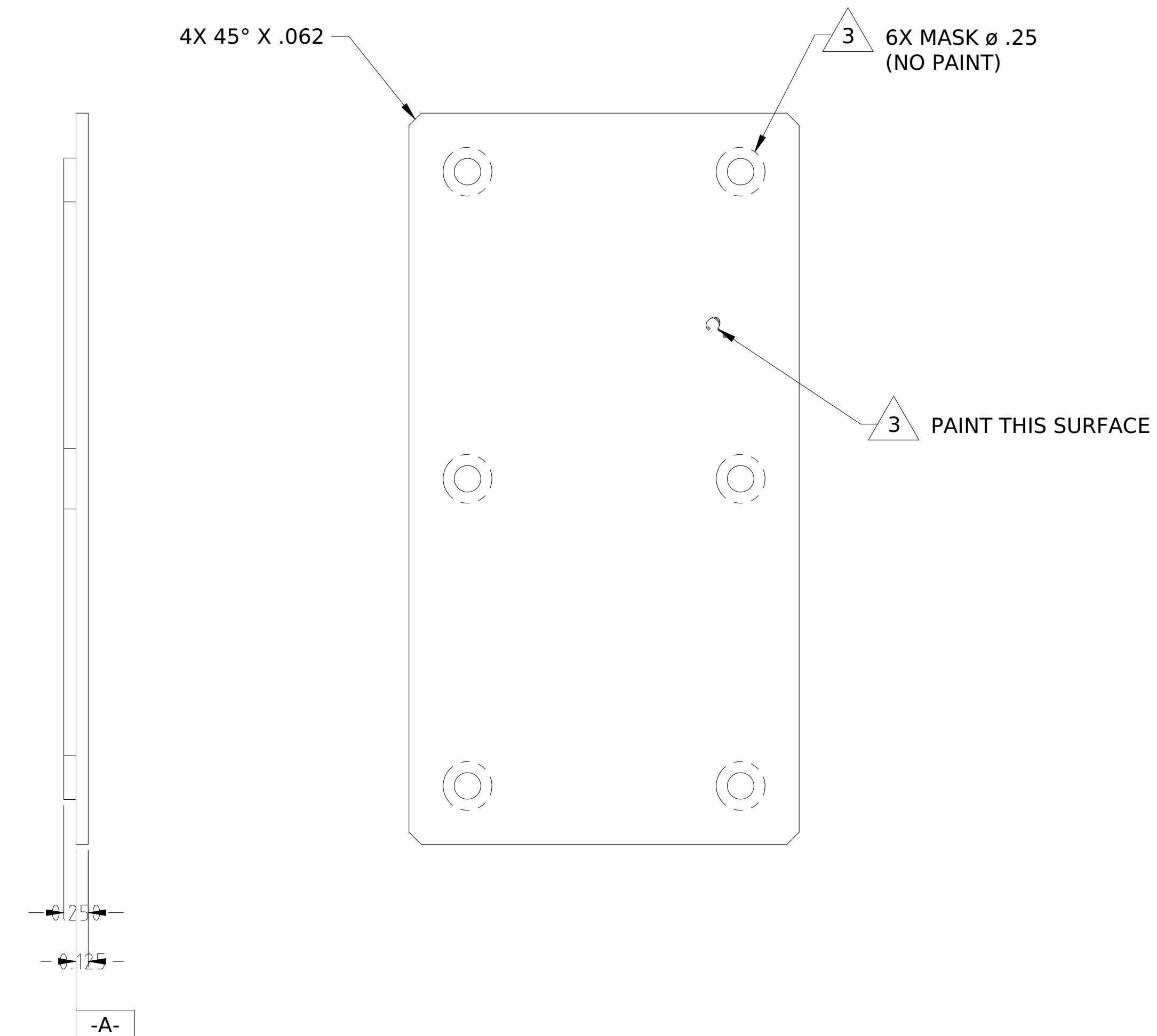
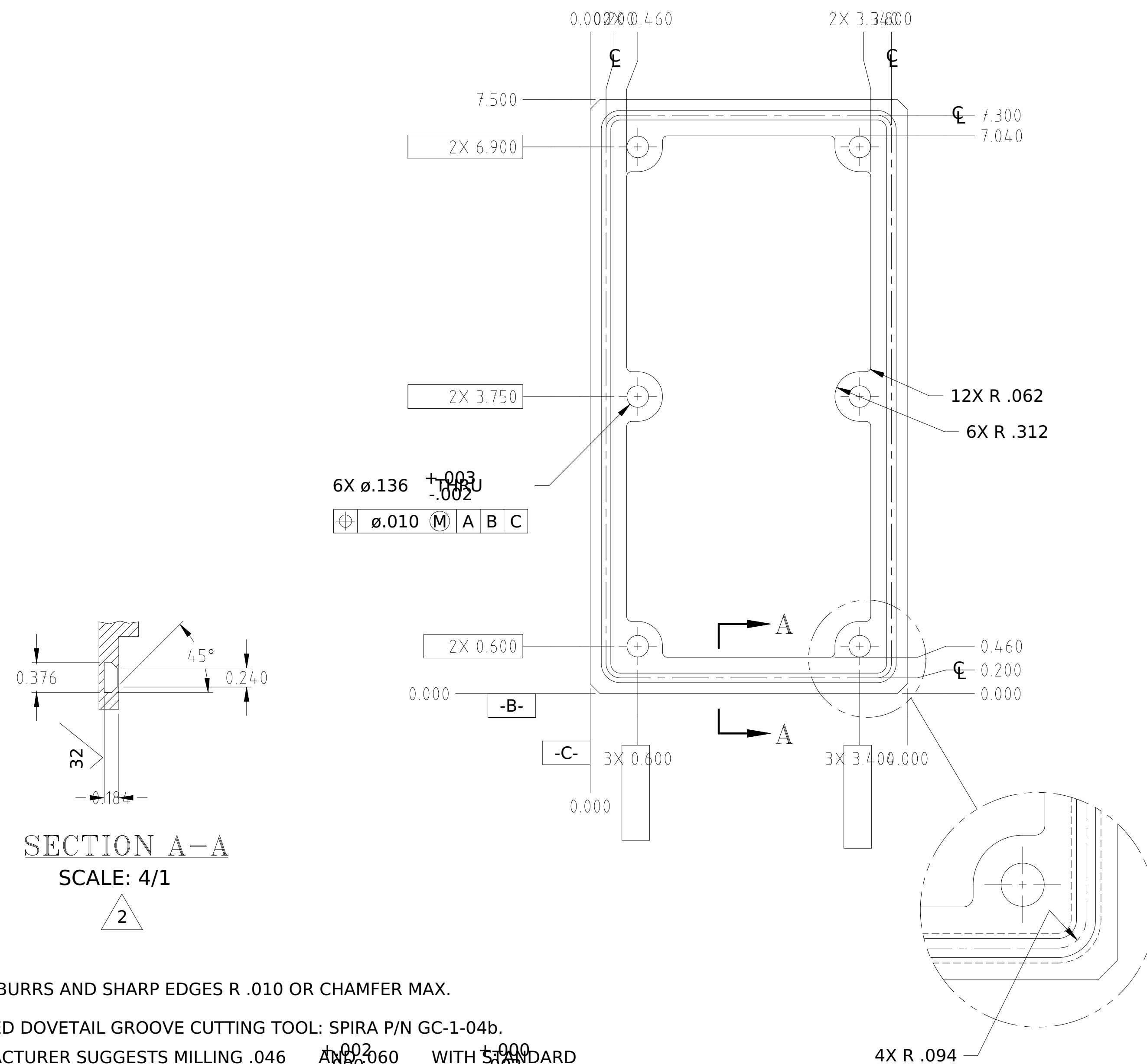


REVISIONS					
REV.	ECO NO.	DESCRIPTION	CHECKED	APPROVED	DATE
A	36-381	INITIAL RELEASE	FJK	RFG	11/3/95
B	36-674	ADD HANDLING NOTES			



SECTION A-A
SCALE: 4/1

2

NOTES:

1. REMOVE BURRS AND SHARP EDGES R .010 OR CHAMFER MAX.
2. SUGGESTED DOVETAIL GROOVE CUTTING TOOL: SPIRA P/N GC-1-04b.
MANUFACTURER SUGGESTS MILLING .046 AND 0.060 WITH STANDARD TOOL FIRST, THEN FINISH WITH DOVETAIL CUTTING TOOL.
SPIRA MANUFACTURING CORP.
12721 SATICOY STREET SOUTH, UNIT B
NORTH HOLLYWOOD, CA 91605
(818) 764-8222
3. FINISH: CHEMICAL CONVERSION COAT ALL OVER PER MIL-C-5541, CLASS 3.
MASK PART AS SHOWN. PRIME PAINT SURFACE INDICATED USING AEROGLAZE 9924 (PRIMER) AND Z306, BLACK (PAINT) IAW MIT SPECIFICATION 36-02028.
4. BAG AND TAG WITH MIT DRAWING NUMBER AND LATEST REVISION.
5. HANDLE ITEM WITH POWDER FREE, CONTAMINATION FREE GLOVES DURING ALL POST FINSH OPERATIONS.

NAME		DATE		MASSACHUSETTS INSTITUTE OF TECHNOLOGY	
DRAWN M.LYONS		03OCT95		CENTER FOR SPACE RESEARCH	
CHECKED F. Kasparian		11/3/95		CAMBRIDGE, MA 02139	
APPROVED R. Goeke		11/3/95		COVER, CONNECTOR, -Z	
RELEASED D. Gage		11/3/95			
UNLESS OTHERWISE SPECIFIED DIMENSIONS ARE IN INCHES TOLERANCE ANGLES ± 1° 3 PLACE DECIMALS ± .005 2 PLACE DECIMALS ± .01		SIZE	CAGE CODE	DWG. NO.	REV.
36-30200	MATERIAL ALUMINUM 6061-T6	D	80230	36-20218	B
36-20200	ACIS	SCALE	2:1	SHEET	1 OF 1
NEXT ASSEMBLY	USED ON	INTERPRET DIMENSIONS AND TOLERANCES IAW ANSI Y14.5M-1982			
APPLICATION					