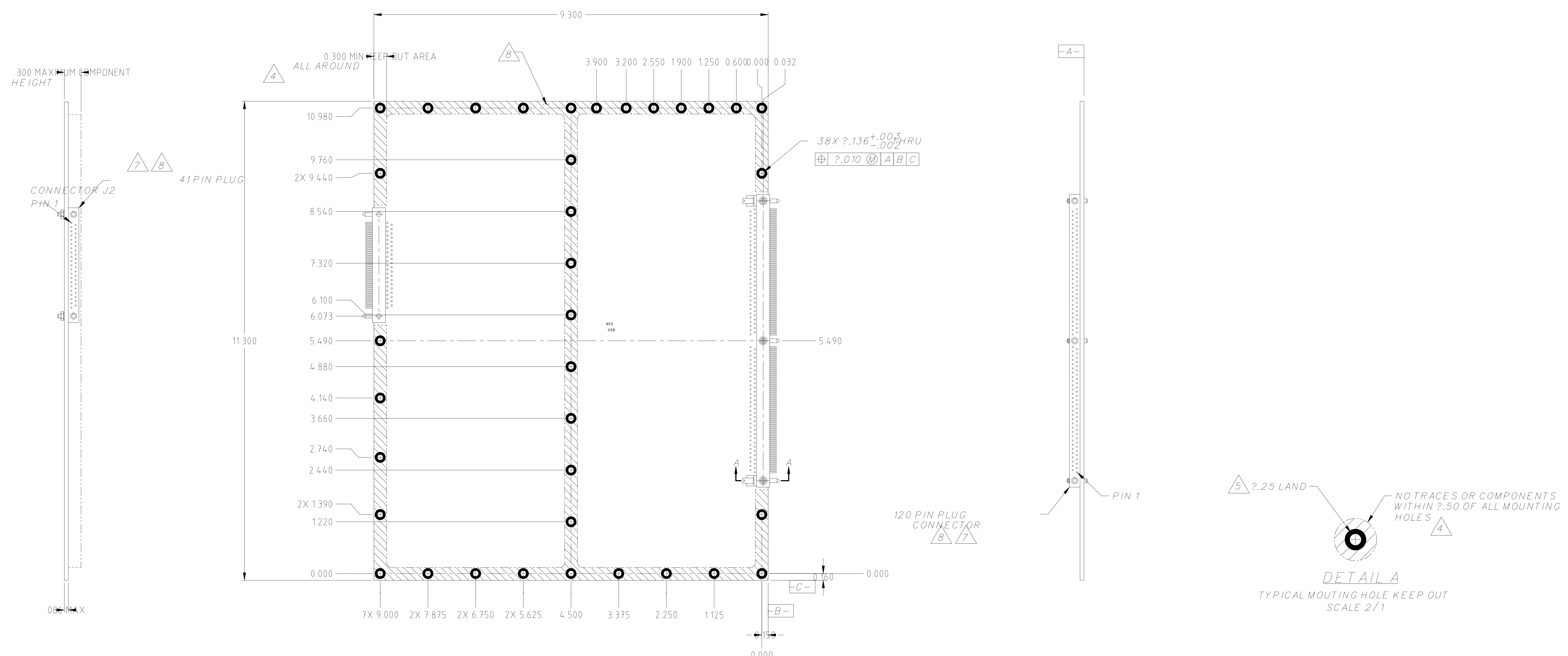
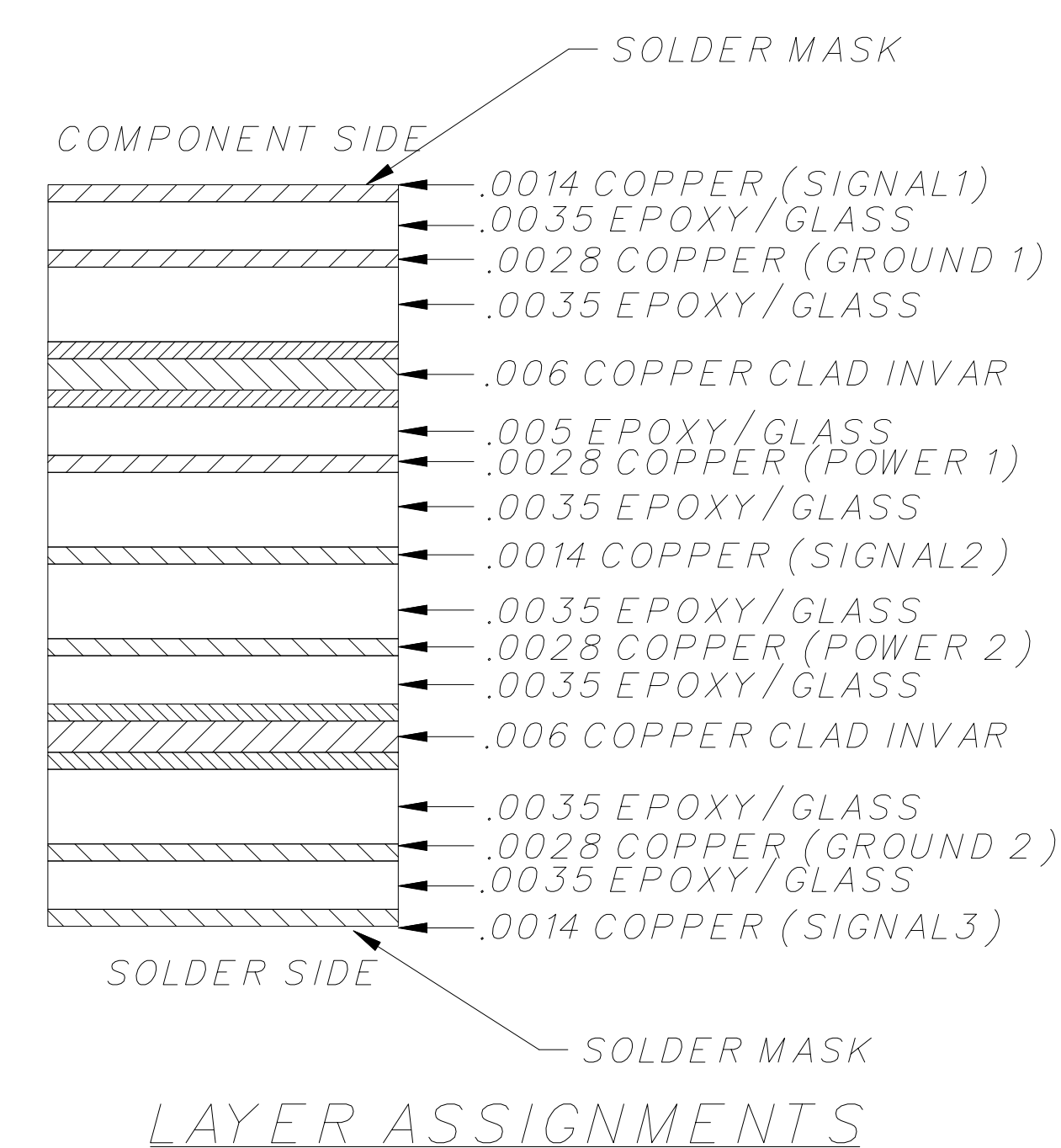


REVISIONS					
REV.	ECO NO.	DESCRIPTION	CHECKED	APPROVED	DATE
01	36-416	PRELIMINARY RELEASE			



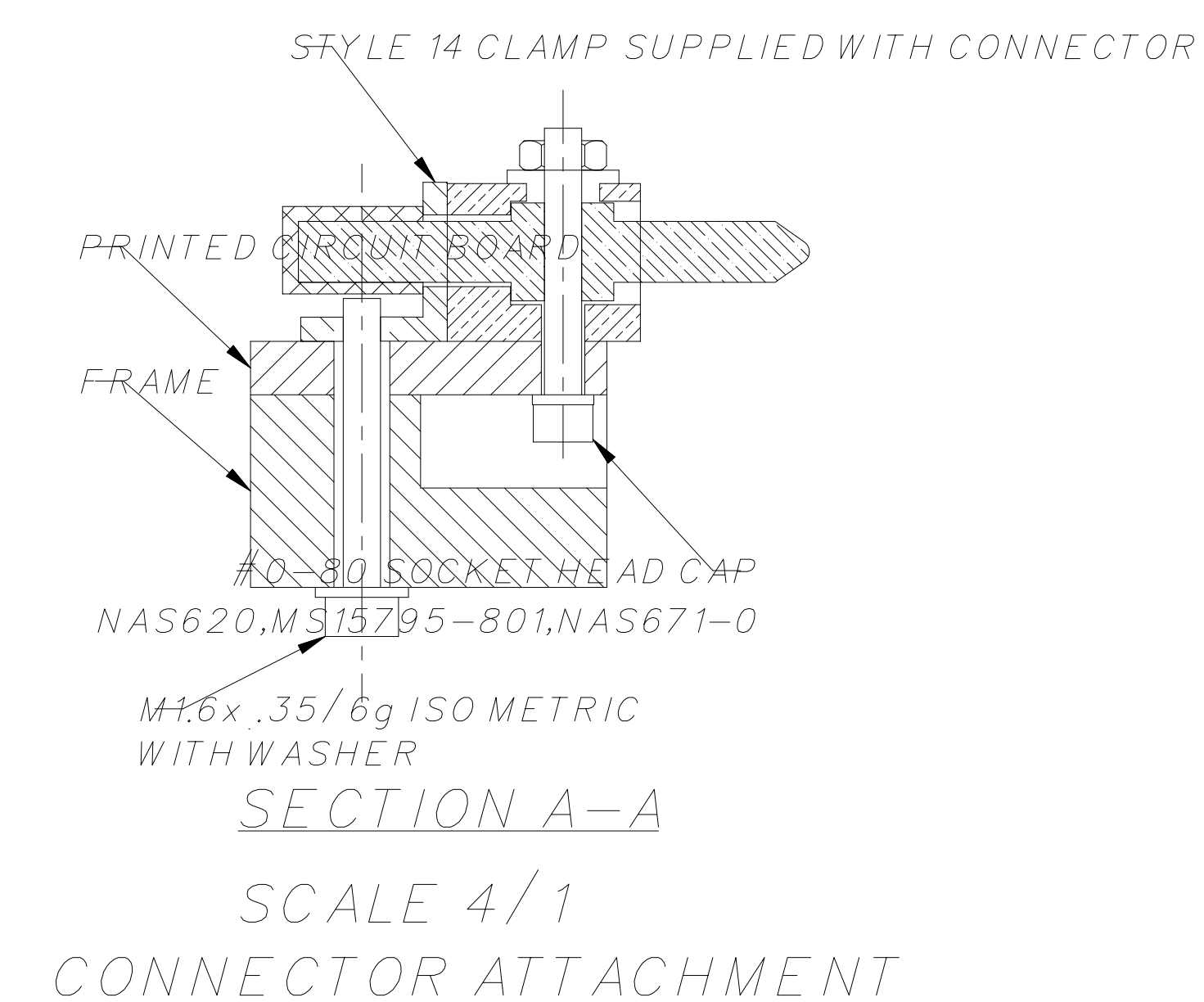
NOTES:

- ITEM SHALL BE DESIGNED AND FABRICATED IAW 36-02105.
- PLACE COMPONENTS APPROX. AS SHOWN, EXCEPT AS NOTED BELOW.
- ALL CORNER RADII .062.
- MINIMUM KEEP OUT ZONES
 - NO TRACES ON SOLDER SIDE.
 - NO COMPONENTS ON COMPONENT SIDE.
 - MOUNTING HOLES AS SHOWN IN DETAIL A.
 - 2 Oz. COPPER, FAR SIDE ONLY. ATTACH TO CIG LAYERS.
- INTERCONNECT COPPER/INVAR/COPPER LAYERS TO EACH OTHER. CONNECT TO SURFACE AS SHOWN.
- MARKING INFORMATION:
 - PWB NAME -- HEATER CONTROL
 - PWB P/N -- 36-20202.01 REV A
 - ASSY P/N -- 36-20202
- LOCATE COMPONENTS AS SHOWN.
- NO SOLDERMASK UNDER THIS COMPONENT
- THICKNESS OF DIELECTRIC OF LAYER ASSIGNMENT SHOWN FOR REFERENCE. OVERALL THICKNESS INCLUDES PLATING.



LAYER ASSIGNMENTS

SEE NOTE 9



SCALE 4/1
CONNECTOR ATTACHMENT

NAME		DATE		MASSACHUSETTS INSTITUTE OF TECHNOLOGY	
DRAWN M. LYONS		09NOV95		CENTER FOR SPACE RESEARCH CAMBRIDGE, MA 02139	
CHECKED		APPROVED		OUTLINE, HEATER CONTROL	
RELEASED		RELEASED			
MATERIAL		SEE DATABASE		SIZE/CAGE CODE	DWG. NO.
36-20202	ACIS	INTERPRET DIMENSIONS AND TOLERANCES IAW ANSI Y14.5M-1982	WEIGHT	E 8023036-20202.010	REV. 01
NEXT ASSEMBLY USED ON		APPLICATION		SCALE 1:1	SHEET 1 OF 1