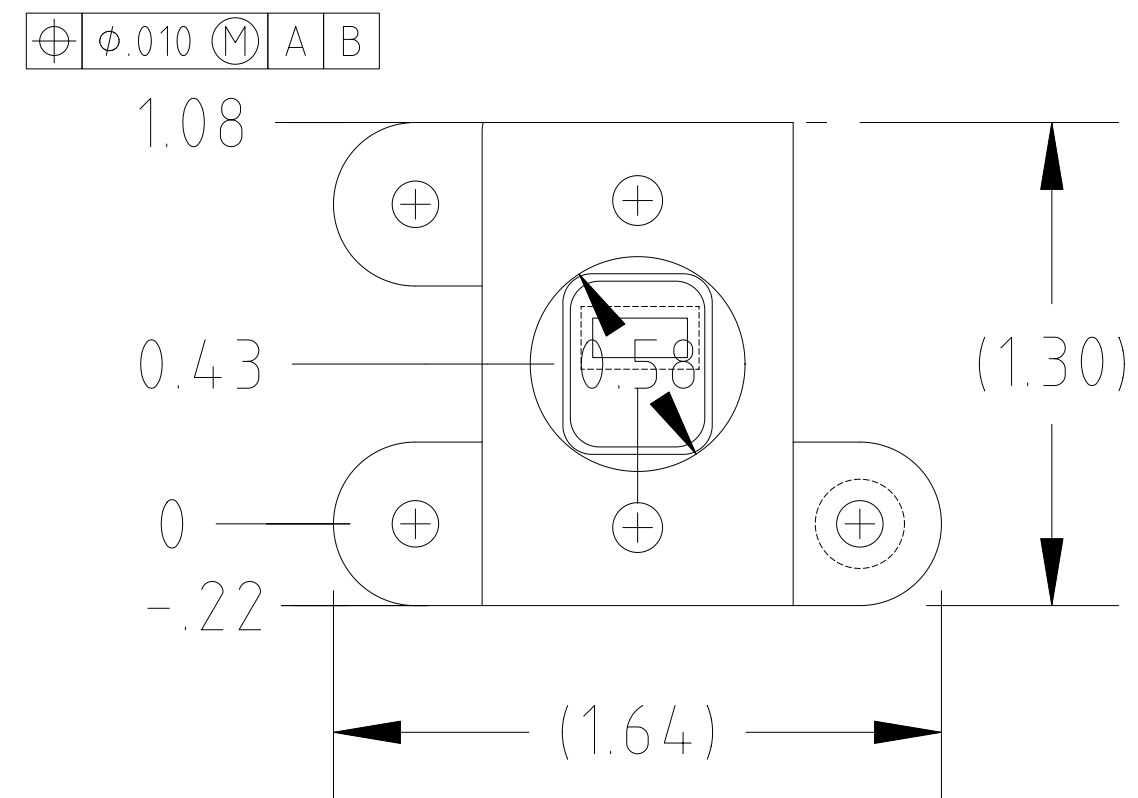
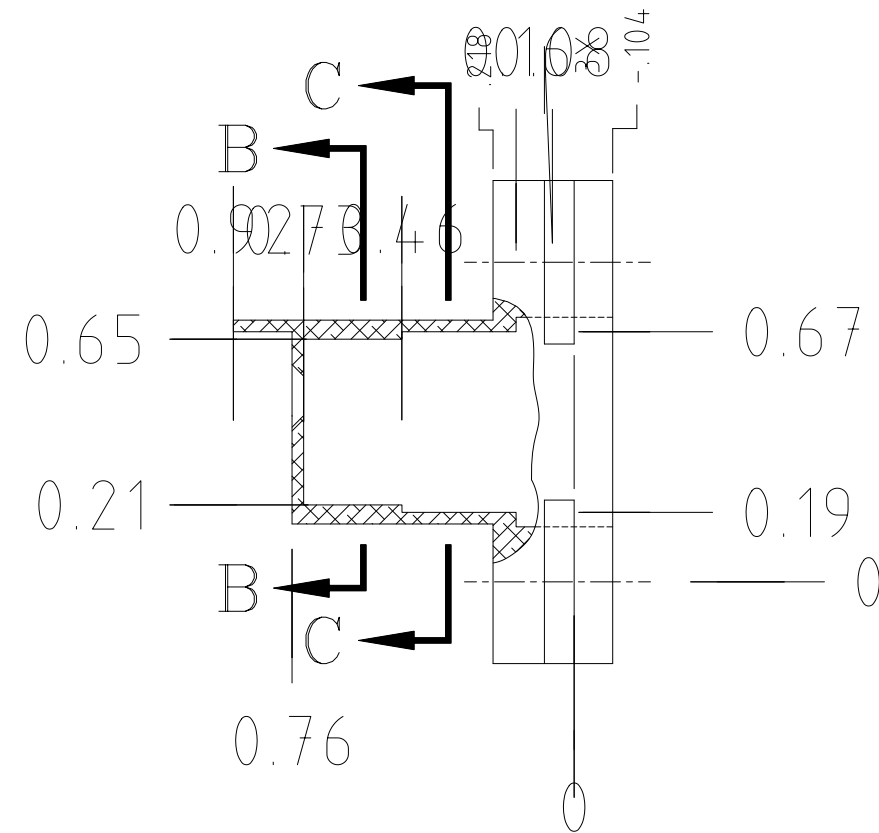
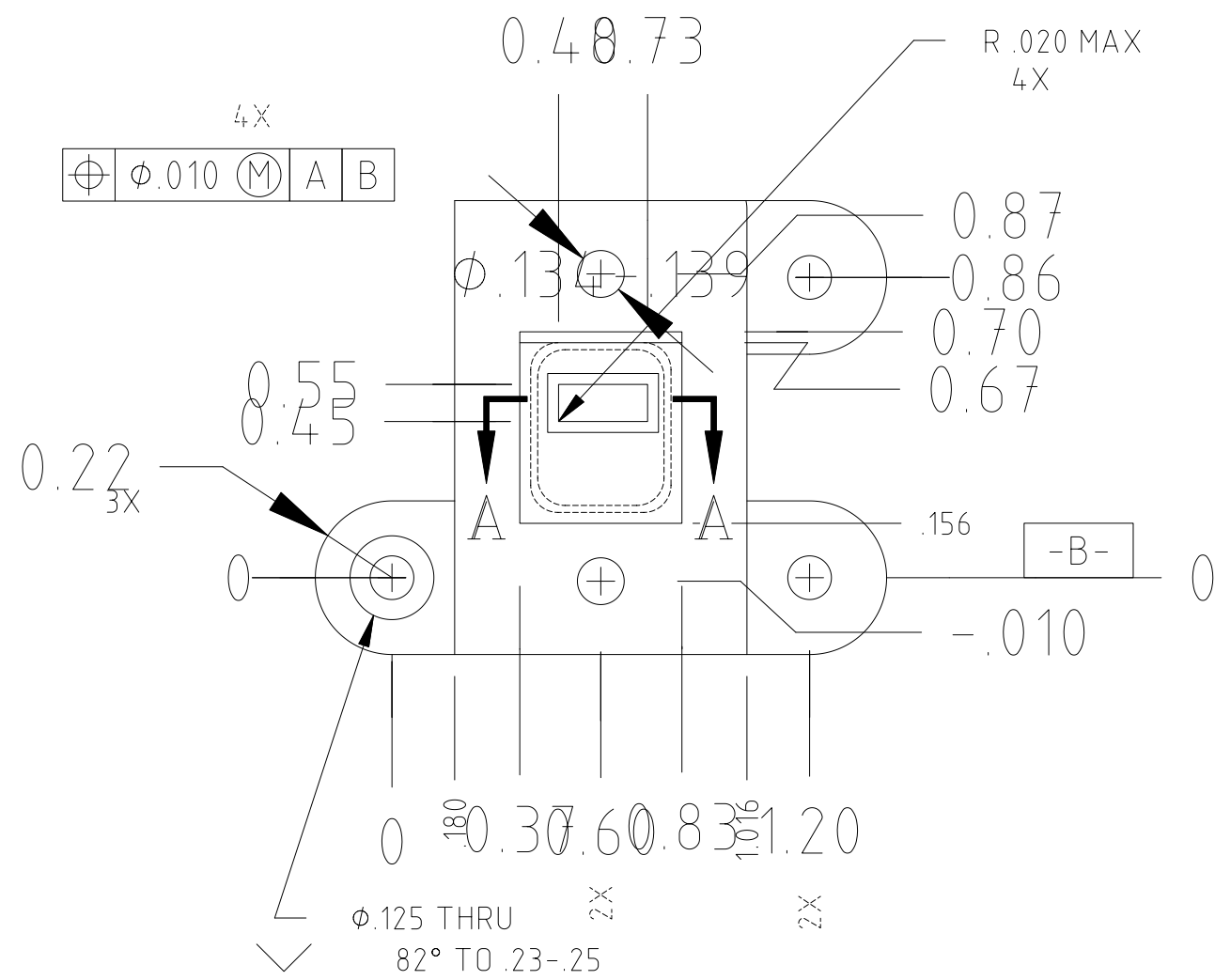
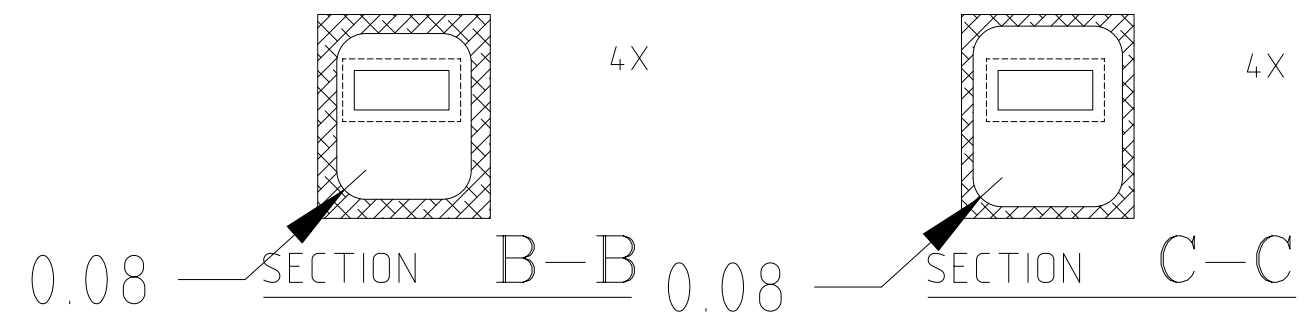
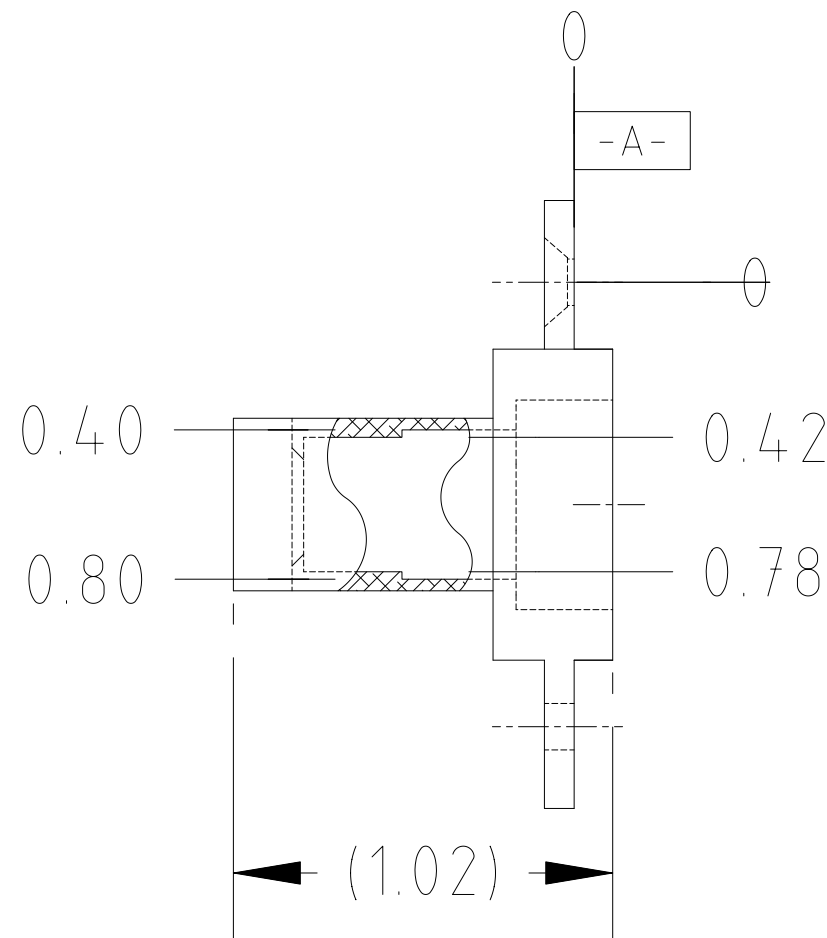
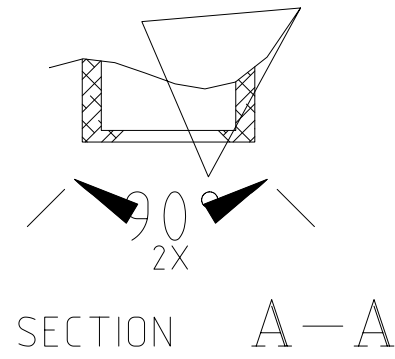


NOTES:

1. MATERIAL: AL 6061-T6 PER QQ-A-250/11
2. DEBURR AND REMOVE ALL SHARP EDGES .01 MAX.
3. FINISH:

EXTERIOR SURFACES FROM AND INCLUDING DATUM -A- TO .917
 ELECTROLESS NICKEL PLATE PER MIL-C-26074, REV. D, CLASS 1
 FOLLOWED BY GOLD PLATE PER MIL-C-45024, TYPE III, CLASS 3, GRADE A.
 INTERIOR SURFACES CONVERSION COAT PER MIL-C-5541, CLASS 3.
 OTHER SURFACES MAY BE EITHER OF THE ABOVE.

REVISIONS					
REV.	ECO NO.	DESCRIPTION	CHECKED	APPROVED	DATE
A	36-417	INITIAL RELEASE			
B	36-484	SEE ECO 36-484			



		UNLESS OTHERWISE SPECIFIED DIMENSIONS ARE IN INCHES TOLERANCE: ANGLES ± 1° 3 PLACE DECIMALS ± .005 2 PLACE DECIMALS ± .01	NAME	DATE	MASSACHUSETTS INSTITUTE OF TECHNOLOGY CENTER FOR SPACE RESEARCH CAMBRIDGE, MA 02139			
			DRAWN	H.C.WEST	11/8/95	ACM HOUSING		
		MATERIAL	APPROVED		SIZE			
36-10202.02	ACIS	NOTE 1	RELEASED		C	80230	36-10202.0203	B
NEXT ASSEMBLY	USED ON	INTERPRET DIMENSIONS AND TOLERANCES IAW ANSI Y14.5M-1982	WEIGHT		SCALE	SHEET		1 OF 1
APPLICATION					2/1			