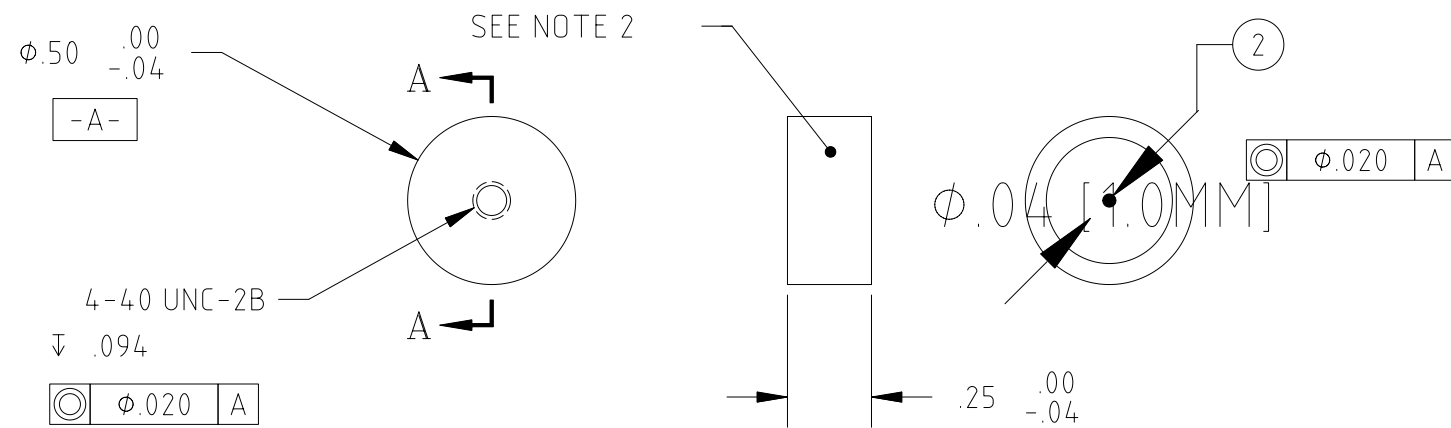
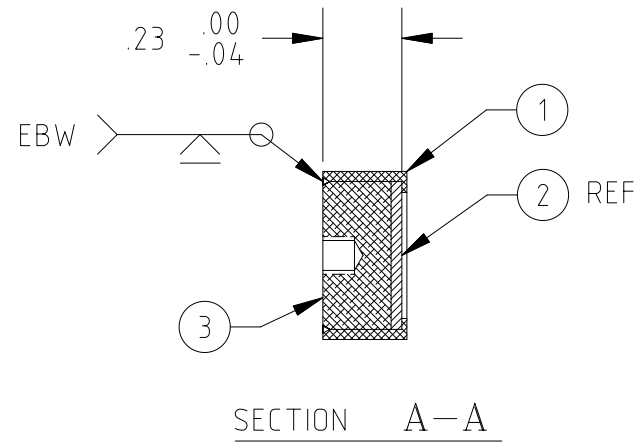


REVISIONS					
REV.	ECO NO.	DESCRIPTION	CHECKED	APPROVED	DATE
A	36-406	INITIAL RELEASE	PCT		



NOTES:

1. REFERENCES ARE TO 36-02350.
2. MARK PER PARA 3.6.2.

QTY	DESCRIPTION	MATERIAL	PART NO.	FIND NO.
1	PLUG	ALUMINUM	36-10202.020103	3
1	ACTIVE ELEMENT	SEE PARA. 3.1	36-10202.020102	2
1	CAPSULE	ALUMINUM	36-10202.020101	1

		UNLESS OTHERWISE SPECIFIED DIMENSIONS ARE IN INCHES TOLERANCE: ANGLES ± 1° 3 PLACE DECIMALS ± .005 2 PLACE DECIMALS ± .01	NAME	DATE	MASSACHUSETTS INSTITUTE OF TECHNOLOGY CENTER FOR SPACE RESEARCH CAMBRIDGE, MA 02139			
			DRAWN	H.C.WEST				11/1/95
		MATERIAL  AS NOTED	CHECKED	P.C.T.	11/1/95	Fe55 SOURCE ASSEMBLY		
			APPROVED					
			RELEASED			SIZE	CAGE CODE	DWG. NO.
36-10202.02	ACIS	APPLICATION	WEIGHT		B	80230	36-10202.0201	A
NEXT ASSEMBLY	USED ON		SCALE	2/1	SHEET	1 OF 1		