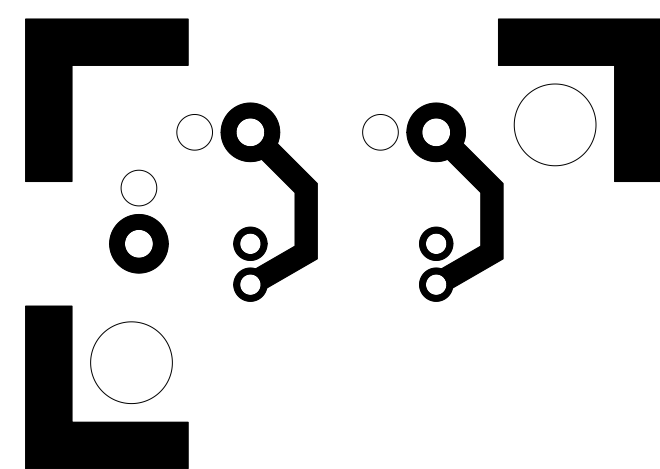
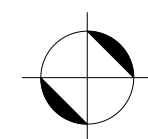
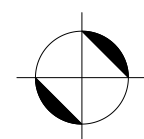
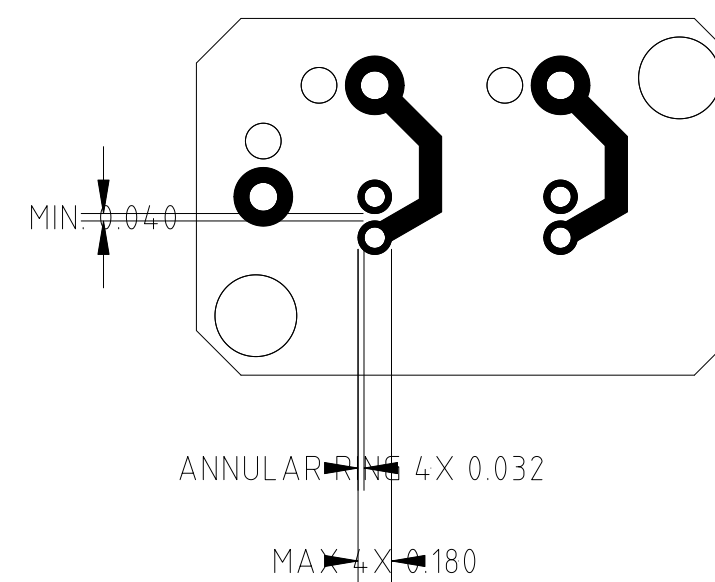


REVISIONS					
REV.	ECO NO.	DISCRIPTION	CHECKED	APPROVED	DATE
A	36-326	INITIAL RELEASE			



COMPONENT SIDE



		UNLESS OTHERWISE SPECIFIED DIMENSIONS ARE IN INCHES TOLERANCE: ANGLES ± 1° 3 PLACE DECIMALS ± .005 2 PLACE DECIMALS ± .01	NAME	DATE	MASSACHUSETTS INSTITUTE OF TECHNOLOGY CENTER FOR SPACE RESEARCH CAMBRIDGE, MA 02139			
			DRAWN	J.COOK	8/29/95	PHOTOTOOL, COMPONENT SIDE		
		MATERIAL	CHECKED		SIZE			
36-10102.0201	ACIS	MIL-P-13949/22 1/2 Oz. COPPER, 2 SIDES	APPROVED		C	80230	36-10102.020101	A
NEXT ASSEMBLY	USED ON		RELEASED		SCALE	4/1	SHEET	1 OF 1
APPLICATION			WEIGHT					