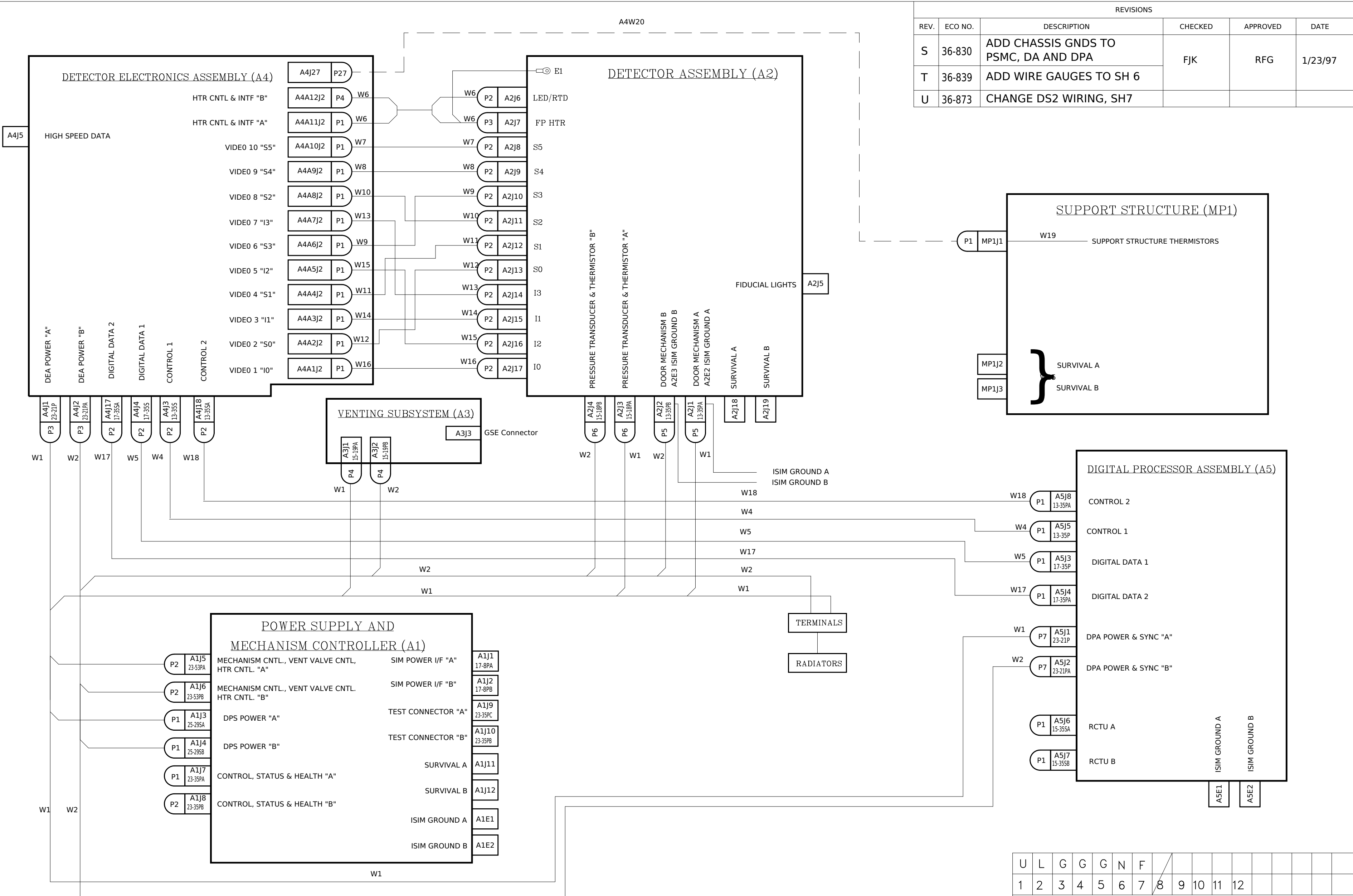


REVISIONS					
REV.	ECO NO.	DESCRIPTION	CHECKED	APPROVED	DATE
S	36-830	ADD CHASSIS GNDS TO PSMC, DA AND DPA	FJK	RFG	1/23/97
T	36-839	ADD WIRE GAUGES TO SH 6			
U	36-873	CHANGE DS2 WIRING, SH7			



- NOTES**
- UNLESS OTHERWISE NOTED, ALL WIRE TO BE 24 AWG.
 - LEGEND:
 - 24 AWG TWISTED SHIELDED PAIR
 - 24 AWG TWISTED PAIR
 - CONNECTOR DESIGNATION, MIL-C-38999, SERIES I, RECEPTACLE

U	L	G	G	G	N	F													
1	2	3	4	5	6	7	8	9	10	11	12								

REVISION STATUS OF SHEETS

NEXT ASSEMBLY		USED ON		APPLICATION		UNLESS OTHERWISE SPECIFIED DIMENSIONS ARE IN INCHES TOLERANCE: ANGLES ± 1° 3 PLACE DECIMALS ± .005 2 PLACE DECIMALS ± .01		NAME DATE		DRAWN J. COOK 10/28/94		CHECKED F. Kasparian 3/9/95		APPROVED R. Goeke 3/9/95		RELEASED D. Gage 3/9/95		WEIGHT		MATERIAL		INTERPRET DIMENSIONS AND TOLERANCES IAW ANSI Y14.5M-1982		MASSACHUSETTS INSTITUTE OF TECHNOLOGY CENTER FOR SPACE RESEARCH CAMBRIDGE, MA 02139		ACIS CABLE INTERCONNECTION DIAGRAM		SIZE CAGE CODE DWG. NO. REV.		SCALE NONE SHEET 1 OF 7	
																										C 80230 36-03020.01 U					

REVISIONS					
REV.	ECO NO.	DESCRIPTION	CHECKED	APPROVED	DATE
		SEE SHEET 1			

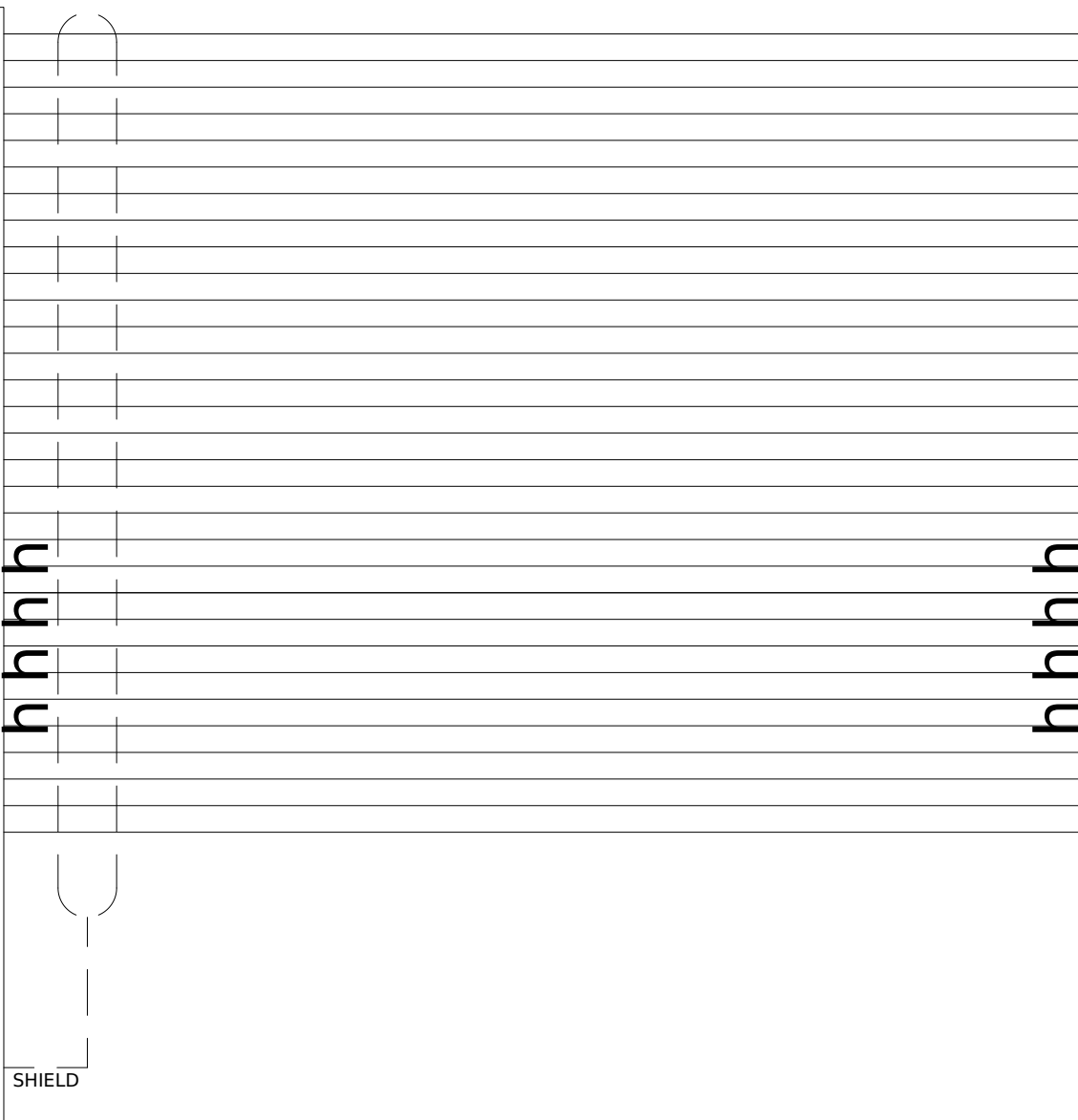
(KA41/127BPV30MCTH) A4A1J2 THRU
A4A10J2

P1 (KA41/127BEV33FRTAH)

(SGMC34F0E1000) P2 A2J8-17

- (P2-KK) P1/IA Phase-1 Imaging Array
- (P2-LL) P2/IA Phase-2 Imaging Array
- (P2-NN) P3/IA Phase-3 Imaging Array
- (P2-X) P1/FS Phase-1 Frame Store
- (P2-W) P2/FS Phase-2 Frame Store
- (P2-U) P3/FS Phase-3 Frame Store
- (P2-H) P1/OR-AC Phase-1 Output Registers A & C
- (P2-R) P1/OR-BD Phase-1 Output Registers B & D
- (P2-L) P2/OR-AC Phase-2 Output Registers A & C
- (P2-K) P2/OR-BD Phase -2 Output Registers B & D
- (P2-N) P3-OR-ABCD Phase-3 Output Registers A-D
- (P2-HH) OG-ABCD Output Gates A-D
- (P2-CC) RG-ABCD Reset Gates A-D
- (P2-AA) RD-ABCD Reset Diodes A-D
- (P2-S) SCP Scupper
- (P2-E) DR-A Drain A
- (P2-P) DR-B Drain-B
- (P2-BB) DR-C Drain-C
- (P2-EE) DR-D Drain-D
- (P2-C) OUT-A Video Output-A
- (P2-J) RET-A Video Return-A
- (P2-M) OUT-B Video Output B
- (P2-T) RET-B Video Return-B
- (P2-Y) OUT-C Video Output-C
- (P2-Z) RET-C Video Return-C
- (P2-DD) OUT-D Video Output-D
- (P2-FF) RET-D Video Return-D
- (P2-JJ) SUB1 Chip Substrate 1
- (P2-F) SUB2 Chip Substrate 2
- (P2-V) SUB3 Chip Substrate 3
- (P2-B) BJ Back Junction
- GND
- GND
- GND
- GND
- OPEN
- OPEN
- OPEN
- OPEN
- GND
- GND

3	3
2	2
1	1
8	8
7	7
6	6
17	17
16	16
18	18
19	19
20	20
26	26
21	21
24	24
25	25
14	14
13	13
12	12
11	11
33	33
34	34
35	35
36	36
37	37
38	38
39	39
40	40
4	4
9	9
22	22
29	29
5	5
10	10
15	15
23	23
27	27
28	28
30	30
31	31
32	32
41	41



MM	MM	A	A
KK	KK	C	C
LL	LL	D	D
NN	NN	B	B
X	X	T	T
W	W	S	S
U	U	U	U
H	H	EE	EE
R	R	Z	Z
L	L	DD	DD
K	K	CC	CC
N	N	BB	BB
HH	HH	E	E
CC	CC	K	K
AA	AA	M	M
S	S	W	W
E	E	HH	HH
P	P	Y	Y
BB	BB	N	N
EE	EE	H	H
C	C	KK	KK
J	J	FF	FF
M	M	AA	AA
T	T	X	X
Y	Y	P	P
Z	Z	R	R
DD	DD	L	L
FF	FF	J	J
JJ	JJ	F	F
F	F	JJ	JJ
V	V	V	V
B	B	NN	NN
D	D	LL	LL
A	A	MM	MM

- OPEN
- (P1-3) P1/IA Phase-1 Imaging Array
- (P1-2) P2/IA Phase-2 Imaging Array
- (P1-1) P3/IA Phase-3 Imaging Array
- (P1-8) P1/FS Phase-1 Frame Store
- (P1-7) P2/FS Phase-2 Frame Store
- (P1-6) P3/FS Phase-3 Frame Store
- (P1-17) P1/OR-AC Phase-1 Output Registers A & C
- (P1-16) P1/OR-BD Phase-1 Output Registers B & D
- (P1-18) P2/OR-AC Phase-2 Output Registers A & C
- (P1-19) P2/OR-BD Phase -2 Output Registers B & D
- (P1-20) P3-OR-ABCD Phase-3 Output Registers A-D
- (P1-26) OG-ABCD Output Gates A-D
- (P1-21) RG-ABCD Reset Gates A-D
- (P1-24) RD-ABCD Reset Diodes A-D
- (P1-25) SCP Scupper
- (P1-14) DR-A Drain A
- (P1-13) DR-B Drain-B
- (P1-12) DR-C Drain-C
- (P1-11) DR-D Drain-D
- (P1-33) OUT-A Video Output-A
- (P1-34) RET-A Video Return-A
- (P1-35) OUT-B Video Output B
- (P1-36) RET-B Video Return-B
- (P1-37) OUT-C Video Output-C
- (P1-38) RET-C Video Return-C
- (P1-39) OUT-D Video Output-D
- (P1-40) RET-D Video Return-D
- (P1-4) SUB1 Chip Substrate 1
- (P1-9) SUB2 Chip Substrate 2
- (P-22) SUB3 Chip Substrate 3
- (P1-29) BJ Back Junction
- OPEN
- OPEN

26 AWG STRANDED NICKEL WIRE
TEFLON INSULATED

W7-16 CCD INTERFACE
(ASSY 36-30405)

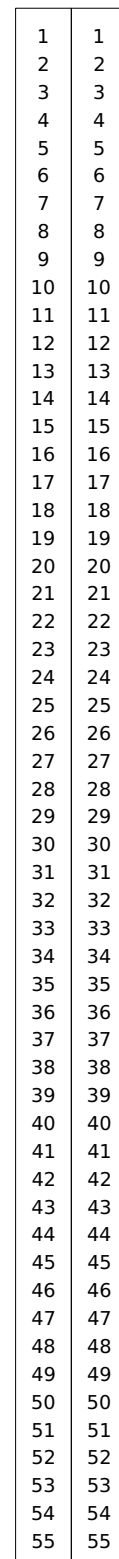
SIZE	CAGE CODE	DWG. NO.	REV.
C	80230	36-03020.01	L
SCALE	NONE	SHEET	2

REVISIONS					
REV.	ECO NO.	DESCRIPTION	CHECKED	APPROVED	DATE
		SEE SHEET 1			

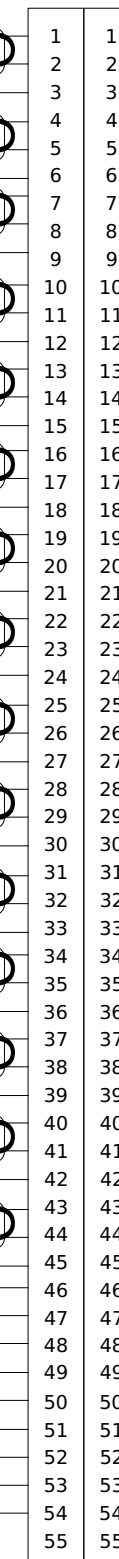
(MS27656T17F35S) A4J4 P2 (MS27467T17F35P)

(MS27467T17F35S) P1 A5J3 (MS27656T17F35P)

- (P1-1) PIXCLKP 1 (I0)
- (P1-2) PIXCLKN 1 (I0)
- (P1-3) SHIELD
- (P1-4) PIXDATP 1 (I0)
- (P1-5) PIXDATN 1 (I0)
- (P1-6) SHIELD
- (P1-7) PIXSYNP 1 (I0)
- (P1-8) PIXSYNN 1 (I0)
- (P1-9) SHIELD
- (P1-10) PIXCLKP 2 (S0)
- (P1-11) PIXCLKN 2 (S0)
- (P1-12) SHIELD
- (P1-13) PIXDATP 2 (S0)
- (P1-14) PIXDATN 2 (S0)
- (P1-15) SHIELD
- (P1-16) PIXSYNP 2 (S0)
- (P1-17) PIXSYNN 2 (S0)
- (P1-18) SHIELD
- (P1-19) PIXCLKP 3 (I1)
- (P1-20) PIXCLKN 3 (I1)
- (P1-21) SHIELD
- (P1-22) PIXDATP 3 (I1)
- (P1-23) PIXDATN 3 (I1)
- (P1-24) SHIELD
- (P1-25) PIXSYNP 3 (I1)
- (P1-26) PIXSYNN 3 (I1)
- (P1-27) SHIELD
- (P1-28) PIXCLKP 4 (S1)
- (P1-29) PIXCLKN 4 (S1)
- (P1-30) SHIELD
- (P1-31) PIXDATP 4 (S1)
- (P1-32) PIXDATN 4 (S1)
- (P1-33) SHIELD
- (P1-34) PIXSYNP 4 (S1)
- (P1-35) PIXSYNN 4 (S1)
- (P1-36) SHIELD
- (P1-37) PIXCLKP 5 (I2)
- (P1-38) PIXCLKN 5 (I2)
- (P1-39) SHIELD
- (P1-40) PIXDATP 5 (I2)
- (P1-41) PIXDATN 5 (I2)
- (P1-42) SHIELD
- (P1-43) PIXSYNP 5 (I2)
- (P1-44) PIXSYNN 5 (I2)
- (P1-45) SHIELD
- (P1-46) RCTU TEMP RTN
- (P1-47) RT810
- (P1-48) RT811
- (P1-49) RT820
- (P1-50) DPA TEMP #1
- (P1-51) DPA TEMP #2
- (P1-52) DPA TEMP #3
- (P1-53) DPA TEMP #4
- (P1-54) DPA TEMP RTN
- (P1-55) SIGNAL GROUND



DEA



DPA

- (P2-1) PIXCLKP 1 (I0)
- (P2-2) PIXCLKN 1 (I0)
- (P2-3) SHIELD
- (P2-4) PIXDATP 1 (I0)
- (P2-5) PIXDATN 1 (I0)
- (P2-6) SHIELD
- (P2-7) PIXSYNP 1 (I0)
- (P2-8) PIXSYNN 1 (I0)
- (P2-9) SHIELD
- (P2-10) PIXCLKP 2 (S0)
- (P2-11) PIXCLKN 2 (S0)
- (P2-12) SHIELD
- (P2-13) PIXDATP 2 (S0)
- (P2-14) PIXDATN 2 (S0)
- (P2-15) SHIELD
- (P2-16) PIXSYNP 2 (S0)
- (P2-17) PIXSYNN 2 (S0)
- (P2-18) SHIELD
- (P2-19) PIXCLKP 3 (I1)
- (P2-20) PIXCLKN 3 (I1)
- (P2-21) SHIELD
- (P2-22) PIXDATP 3 (I1)
- (P2-23) PIXDATN 3 (I1)
- (P2-24) SHIELD
- (P2-25) PIXSYNP 3 (I1)
- (P2-26) PIXSYNN 3 (I1)
- (P2-27) SHIELD
- (P2-28) PIXCLKP 4 (S1)
- (P2-29) PIXCLKN 4 (S1)
- (P2-30) SHIELD
- (P2-31) PIXDATP 4 (S1)
- (P2-32) PIXDATN 4 (S1)
- (P2-33) SHIELD
- (P2-34) PIXSYNP 4 (S1)
- (P2-35) PIXSYNN 4 (S1)
- (P2-36) SHIELD
- (P2-37) PIXCLKP 5 (I2)
- (P2-38) PIXCLKN 5 (I2)
- (P2-39) SHIELD
- (P2-40) PIXDATP 5 (I2)
- (P2-41) PIXDATN 5 (I2)
- (P2-42) SHIELD
- (P2-43) PIXSYNP 5 (I2)
- (P2-44) PIXSYNN 5 (I2)
- (P2-45) SHIELD
- (P2-46) RCTU TEMP RTN
- (P2-47) RT810
- (P2-48) RT811
- (P2-49) RT820
- (P2-50) DPA TEMP #1
- (P2-51) DPA TEMP #2
- (P2-52) DPA TEMP #3
- (P2-53) DPA TEMP #4
- (P2-54) DPA TEMP RTN
- (P2-55) SIGNAL GROUND

**W5 DIGITAL DATA 1
(ASSY 36-30403)**

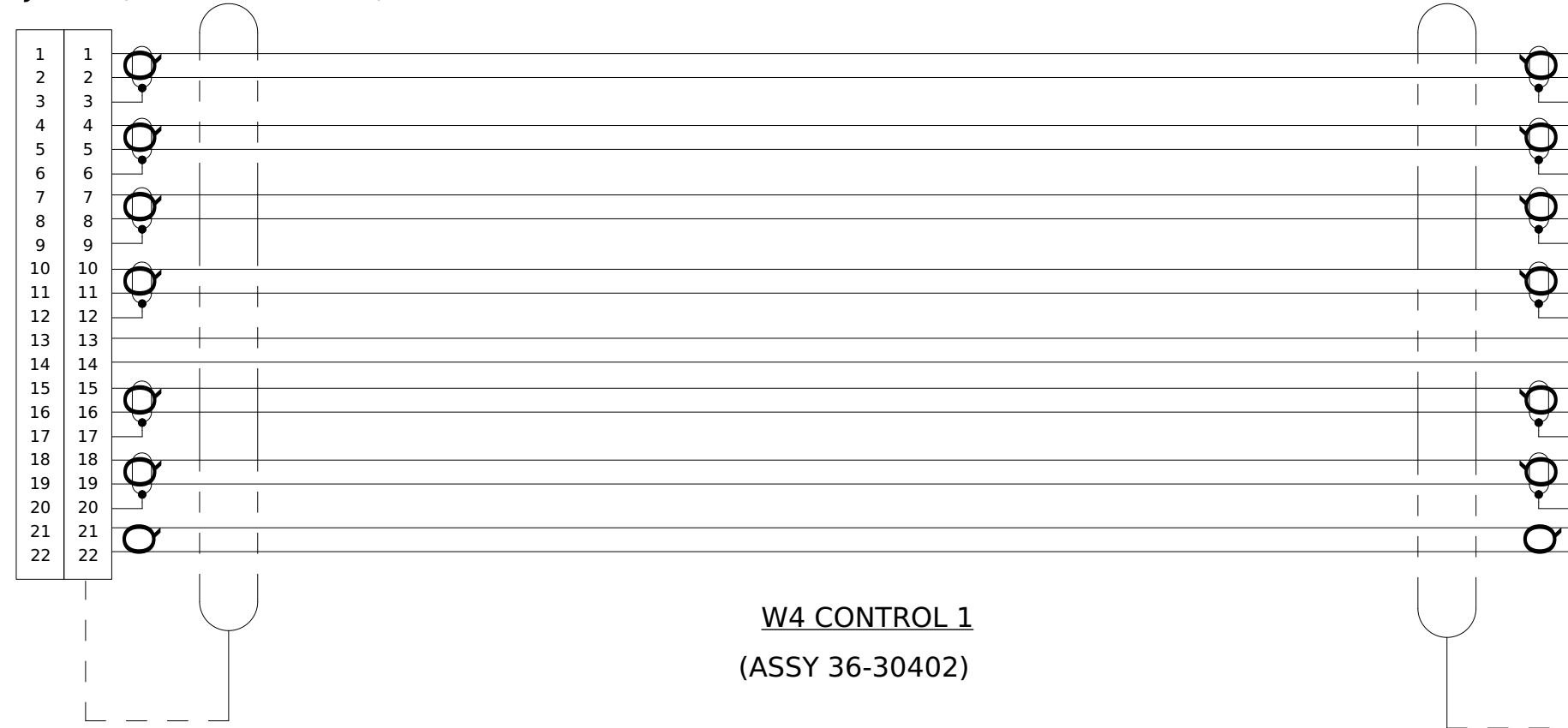
SIZE	CAGE CODE	DWG. NO.	REV.
C	80230	36-03020.01	G
SCALE	NONE	SHEET	3

REVISIONS					
REV.	ECO NO.	DESCRIPTION	CHECKED	APPROVED	DATE
		SEE SHEET 1			

(MS27656T13F35S) A4J3 P2 (MS27467T13F35P)

(MS27467T13F35S) P1 A5J5 (MS27656T13F35P)

- 1 (P1-1) CSCKP_A
- 2 (P1-2) CSCKN_A
- 3 (P1-3) SHIELD
- 4 (P1-4) CMDATN_A
- 5 (P1-5) CMDATP_A
- 6 (P1-6) SHIELD
- 7 (P1-7) STDATP_A
- 8 (P1-8) STDATN_A
- 9 (P1-9) SHIELD
- 10 (P1-10) RESETP_A
- 11 (P1-11) RESETN_A
- 12 (P1-12) SHIELD
- 13 (P1-13) BEPSEL_A
- 14 (P1-14) SPARE
- 15 (P1-15) CK100KP_A
- 16 (P1-16) CK100KN_A
- 17 (P1-17) SHIELD
- 18 (P1-18) CLK64MP_A
- 19 (P1-19) CLK64MN_A
- 20 (P1-20) SHIELD
- 21 (P1-21) GROUND
- 22 (P1-22) DPAHK5V_A



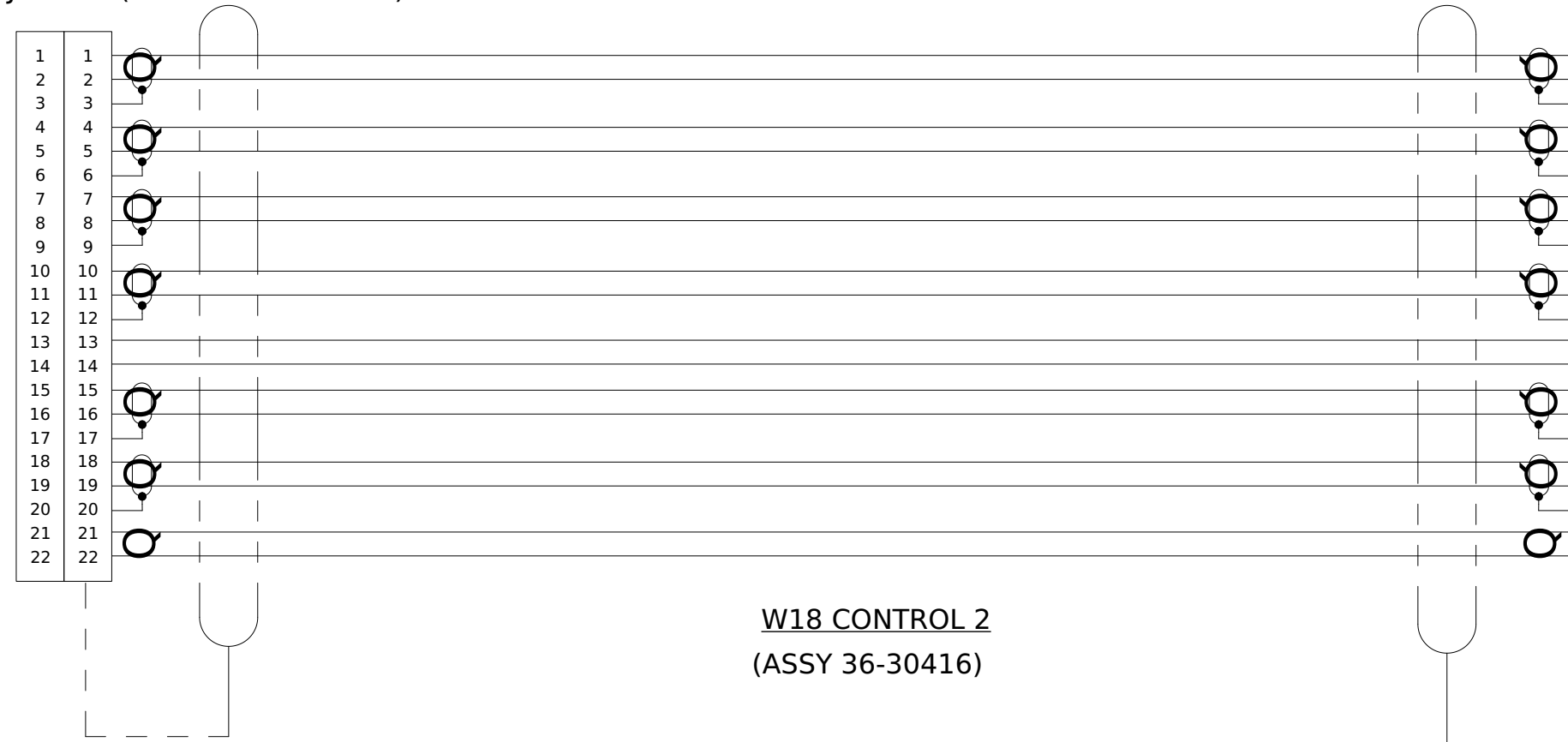
W4 CONTROL 1
(ASSY 36-30402)

- 1 (P2-1) CSCKP_A
- 2 (P2-2) CSCKN_A
- 3 (P2-3) SHIELD
- 4 (P2-4) CMDATN_A
- 5 (P2-5) CMDATP_A
- 6 (P2-6) SHIELD
- 7 (P2-7) STDATP_A
- 8 (P2-8) STDATN_A
- 9 (P2-9) SHIELD
- 10 (P2-10) RESETP_A
- 11 (P2-11) RESETN_A
- 12 (P2-12) SHIELD
- 13 (P2-13) BEPSEL_A
- 14 (P2-14) SPARE
- 15 (P2-15) CK100KP_A
- 16 (P2-16) CK100KN_A
- 17 (P2-17) SHIELD
- 18 (P2-18) CLK64MP_A
- 19 (P2-19) CLK64MN_A
- 20 (P2-20) SHIELD
- 21 (P2-21) GROUND
- 22 (P2-22) DPAHK5V_A

(MS27656T13F35SA) A4J18 P2 (MS27467T13F35PA)

(MS27467T13F35SA) P1 A5J8 (MS27656T13F35PA)

- 1 (P1-1) CSCKP_B
- 2 (P1-2) CSCKN_B
- 3 (P1-3) SHIELD
- 4 (P1-4) CMDATN_B
- 5 (P1-5) CMDATP_B
- 6 (P1-6) SHIELD
- 7 (P1-7) STDATP_B
- 8 (P1-8) STDATN_B
- 9 (P1-9) SHIELD
- 10 (P1-10) RESETP_B
- 11 (P1-11) RESETN_B
- 12 (P1-12) SHIELD
- 13 (P1-13) BEPSEL_B
- 14 (P1-14) SPARE
- 15 (P1-15) CK100KP_B
- 16 (P1-16) CK100KN_B
- 17 (P1-17) SHIELD
- 18 (P1-18) CLK64MP_B
- 19 (P1-19) CLK64MN_B
- 20 (P1-20) SHIELD
- 21 (P1-21) GROUND
- 22 (P1-22) DPAHK5V_B



W18 CONTROL 2
(ASSY 36-30416)

- 1 (P2-1) CSCKP_B
- 2 (P2-2) CSCKN_B
- 3 (P2-3) SHIELD
- 4 (P2-4) CMDATN_B
- 5 (P2-5) CMDATP_B
- 6 (P2-6) SHIELD
- 7 (P2-7) STDATP_B
- 8 (P2-8) STDATN_B
- 9 (P2-9) SHIELD
- 10 (P2-10) RESETP_B
- 11 (P2-11) RESETN_B
- 12 (P2-12) SHIELD
- 13 (P2-13) BEPSEL_B
- 14 (P2-14) SPARE
- 15 (P2-15) CK100KP_B
- 16 (P2-16) CK100KN_B
- 17 (P2-17) SHIELD
- 18 (P2-18) CLK64MP_B
- 19 (P2-19) CLK64MN_B
- 20 (P2-20) SHIELD
- 21 (P2-21) GROUND
- 22 (P2-22) DPAHK5V_B

SIZE	CAGE CODE	DWG. NO.	REV.
C	80230	36-03020.01	G
SCALE NONE		SHEET 4	

REVISIONS					
REV.	ECO NO.	DESCRIPTION	CHECKED	APPROVED	DATE
		SEE SHEET 1			

(MS27656T17F35SA) A4J17 P2 (MS27467T17F35PA)

(MS27467T17F35SA) P1 A5J4 (MS27656T17F35PA)

- (P1-1) PIXCLKP 6 (S3)
- (P1-2) PIXCLKN 6 (S3)
- (P1-3) SHIELD
- (P1-4) PIXDATP 6 (S3)
- (P1-5) PIXDATN 6 (S3)
- (P1-6) SHIELD
- (P1-7) PIXSYNP 6 (S3)
- (P1-8) PIXSYNN 6 (S3)
- (P1-9) SHIELD
- (P1-10) PIXCLKP 7 (I3)
- (P1-11) PIXCLKN 7 (I3)
- (P1-12) SHIELD
- (P1-13) PIXDATP 7 (I3)
- (P1-14) PIXDATN 7 (I3)
- (P1-15) SHIELD
- (P1-16) PIXSYNP 7 (I3)
- (P1-17) PIXSYNN 7 (I3)
- (P1-18) SHIELD
- (P1-19) PIXCLKP 8 (S2)
- (P1-20) PIXCLKN 8 (S2)
- (P1-21) SHIELD
- (P1-22) PIXDATP 8 (S2)
- (P1-23) PIXDATN 8 (S2)
- (P1-24) SHIELD
- (P1-25) PIXSYNP 8 (S2)
- (P1-26) PIXSYNN 8 (S2)
- (P1-27) SHIELD
- (P1-28) PIXCLKP 9 (S4)
- (P1-29) PIXCLKN 9 (S4)
- (P1-30) SHIELD
- (P1-31) PIXDATP 9 (S4)
- (P1-32) PIXDATN 9 (S4)
- (P1-33) SHIELD
- (P1-34) PIXSYNP 9 (S4)
- (P1-35) PIXSYNN 9 (S4)
- (P1-36) SHIELD
- (P1-37) PIXCLKP 10 (S5)
- (P1-38) PIXCLKN 10 (S5)
- (P1-39) SHIELD
- (P1-40) PIXDATP 10 (S5)
- (P1-41) PIXDATN 10 (S5)
- (P1-42) SHIELD
- (P1-43) PIXSYNP 10 (S5)
- (P1-44) PIXSYNN 10 (S5)
- (P1-45) SHIELD
- (P1-46) DPA TEMP #5
- (P1-47) DPA TEMP #6
- (P1-48) DPA TEMP #7
- (P1-49) DPA TEMP #8
- (P1-50) DPA TEMP #9
- (P1-51) DPA TEMP #10
- (P1-52) DPA TEMP #11
- (P1-52) DPA TEMP #12
- (P1-54) DPA TEMP RTN
- SIGNAL GROUND



- (P2-1) PIXCLKP 6 (S3)
- (P2-2) PIXCLKN 6 (S3)
- (P2-3) SHIELD
- (P2-4) PIXDATP 6 (S3)
- (P2-5) PIXDATN 6 (S3)
- (P2-6) SHIELD
- (P2-7) PIXSYNP 6 (S3)
- (P2-8) PIXSYNN 6 (S3)
- (P2-9) SHIELD
- (P2-10) PIXCLKP 7 (I3)
- (P2-11) PIXCLKN 7 (I3)
- (P2-12) SHIELD
- (P2-13) PIXDATP 7 (I3)
- (P2-14) PIXDATN 7 (I3)
- (P2-15) SHIELD
- (P2-16) PIXSYNP 7 (I3)
- (P2-17) PIXSYNN 7 (I3)
- (P2-18) SHIELD
- (P2-19) PIXCLKP 8 (S2)
- (P2-20) PIXCLKN 8 (S2)
- (P2-21) SHIELD
- (P2-22) PIXDATP 8 (S2)
- (P2-23) PIXDATN 8 (S2)
- (P2-24) SHIELD
- (P2-25) PIXSYNP 8 (S2)
- (P2-26) PIXSYNN 8 (S2)
- (P2-27) SHIELD
- (P2-28) PIXCLKP 9 (S4)
- (P2-29) PIXCLKN 9 (S4)
- (P2-30) SHIELD
- (P2-31) PIXDATP 9 (S4)
- (P2-32) PIXDATN 9 (S4)
- (P2-33) SHIELD
- (P2-34) PIXSYNP 9 (S4)
- (P2-35) PIXSYNN 9 (S4)
- (P2-36) SHIELD
- (P2-37) PIXCLKP 10 (S5)
- (P2-38) PIXCLKN 10 (S5)
- (P2-39) SHIELD
- (P2-40) PIXDATP 10 (S5)
- (P2-41) PIXDATN 10 (S5)
- (P2-42) SHIELD
- (P2-43) PIXSYNP 10 (S5)
- (P2-44) PIXSYNN 10 (S5)
- (P2-45) SHIELD
- (P2-46) DPA TEMP #5
- (P2-47) DPA TEMP #6
- (P2-48) DPA TEMP #7
- (P2-49) DPA TEMP #8
- (P2-50) DPA TEMP #9
- (P2-51) DPA TEMP #10
- (P2-52) DPA TEMP #11
- (P2-53) DPA TEMP #12
- (P2-54) DPA TEMP RTN
- SIGNAL GROUND

DEA

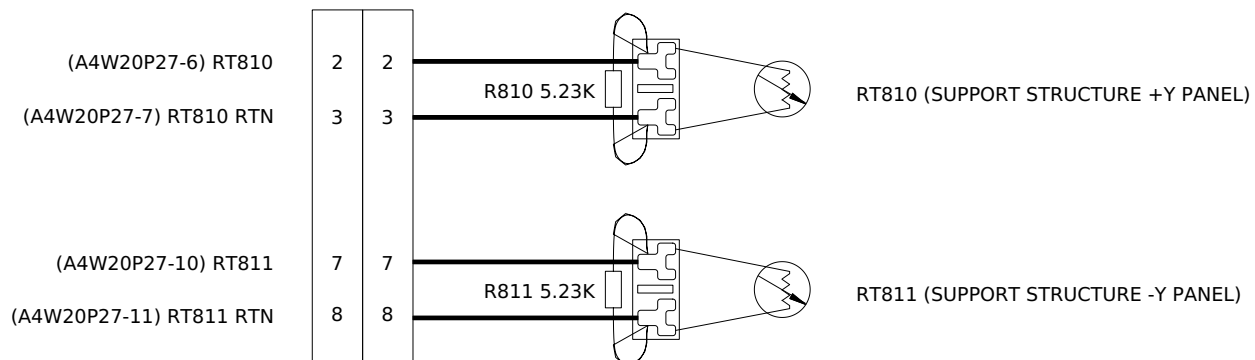
DPA

W17 DIGITAL DATA 2 (ASSY 36-30415)

SIZE	CAGE CODE	DWG. NO.	REV.
C	80230	36-03020.01	G
SCALE	NONE	SHEET	5

311P409-1P-B-12 A4W20P1

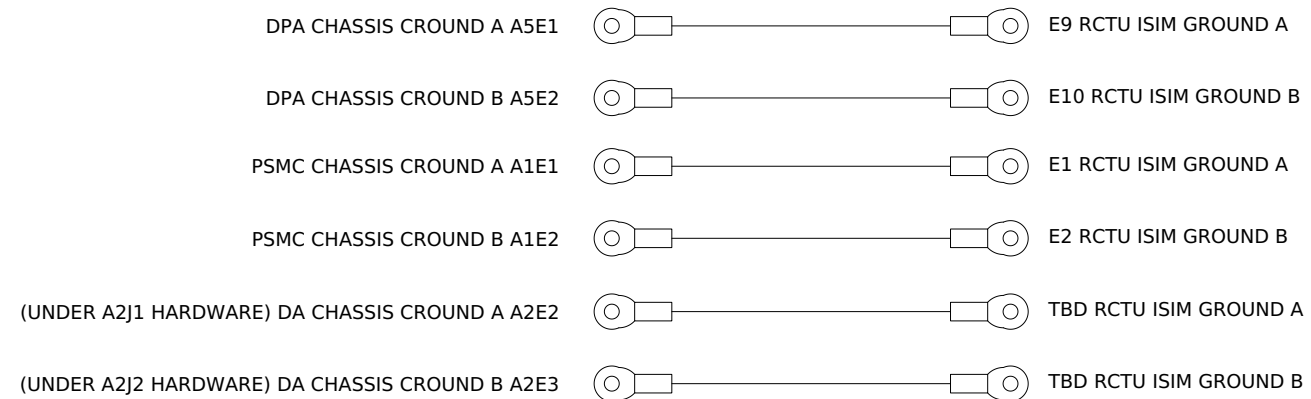
MP1J1 311P409-1S-B-12



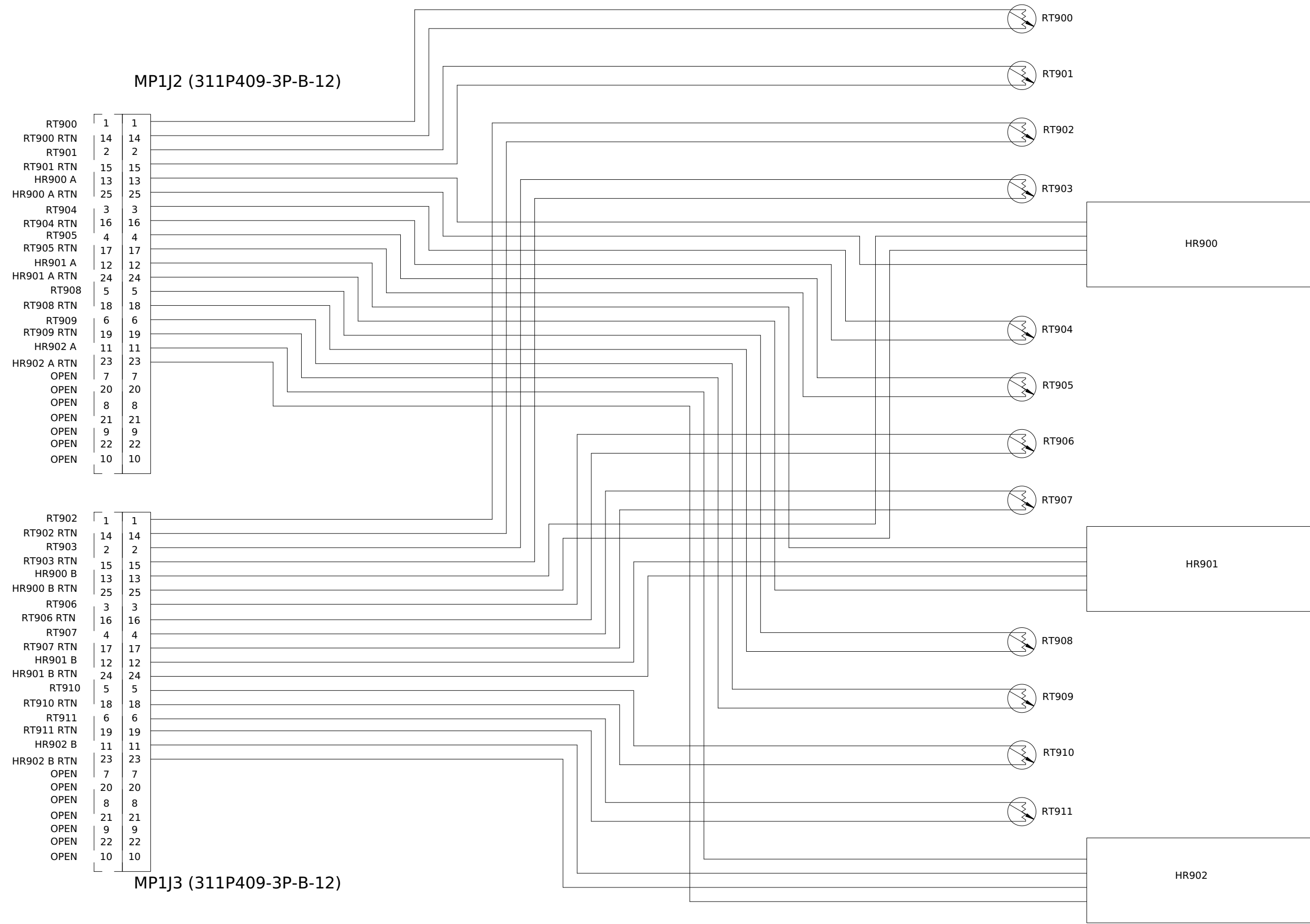
W19 SUPPORT STRUCTURE THERMISTORS
(ASSY 36-30123)

26 AWG STRANDED

REVISIONS					
REV.	ECO NO.	DESCRIPTION	CHECKED	APPROVED	DATE
		SEE SHEET 1			



P/O W73 ISIM CABLE ASSY (TRW)



MP1J2 (311P409-3P-B-12)

RT900	1	1
RT900 RTN	14	14
RT901	2	2
RT901 RTN	15	15
HR900 A	13	13
HR900 A RTN	25	25
RT904	3	3
RT904 RTN	16	16
RT905	4	4
RT905 RTN	17	17
HR901 A	12	12
HR901 A RTN	24	24
RT908	5	5
RT908 RTN	18	18
RT909	6	6
RT909 RTN	19	19
HR902 A	11	11
HR902 A RTN	23	23
OPEN	7	7
OPEN	20	20
OPEN	8	8
OPEN	21	21
OPEN	9	9
OPEN	22	22
OPEN	10	10

MP1J3 (311P409-3P-B-12)

RT902	1	1
RT902 RTN	14	14
RT903	2	2
RT903 RTN	15	15
HR900 B	13	13
HR900 B RTN	25	25
RT906	3	3
RT906 RTN	16	16
RT907	4	4
RT907 RTN	17	17
HR901 B	12	12
HR901 B RTN	24	24
RT910	5	5
RT910 RTN	18	18
RT911	6	6
RT911 RTN	19	19
HR902 B	11	11
HR902 B RTN	23	23
OPEN	7	7
OPEN	20	20
OPEN	8	8
OPEN	21	21
OPEN	9	9
OPEN	22	22
OPEN	10	10

HEATER A - YELLOW WIRE
HEATER B - YELLOW/BLUE STRIPE WIRE

W25 SUPPORT STRUCTURE SURVIVAL HEATERS
(ASSY 36-30122)

SIZE	CAGE CODE	DWG. NO.	REV.
C	80230	36-03020.01	N
SCALE	NONE	SHEET	6

REVISIONS					
REV.	ECO NO.	DESCRIPTION	CHECKED	APPROVED	DATE
		SEE SHEET 1			

(KA41/127BPV30MCTH) A4A11J2 P1 (KA41/127BEV33FR TAH)

- (P2-11) DS1IN 1
- (P2-10) COMMON 2
- (P4-3) PWR-SAFE 3
- (P4-4) FPTEMP-B 4
- OPEN 5
- (P3-1) [BAKEOUT] HR600POW 6
- (P3-2) HEATERCOM A 7
- (P3-12) HR602 & HR603POW 8
- (P3-4) RT600 BLUE 9
- (P3-5) RT600 GOLD 10
- (P3-15) RT600 GOLD 11
- (P3-7) RT700 BLUE 12
- (P3-8) RT700 GOLD 13
- (P3-18) RT700 GOLD 14
- (NOT USED) CHASSIS GND 15
- (P4-16) HKVOUT 16
- (P4-17) HKADD2 17
- (P4-18) HKADD1 18
- (P4-19) HKADD0 19
- (P4-20) HEN40 20
- (P4-21) HEN32 21
- (P4-22) HEN24 22
- (P4-23) HEN16 23
- (P4-24) HEN8 24
- (P4-25) HEN0 25
- (P4-26) FLIP-P1TOB 26
- (P4-27) FLIP-P2TOB 27
- (P4-28) FLIP-P3TOB 28
- (P4-29) FLIP-P4TOB 29
- (P4-30) FLIP-P5TOB 30
- (P4-31) FLIPTOB 31
- (P4-32) EGND 32
- (P4-33) DEA+6VDCB 33
- (P4-34) DEA+6VDCB 34
- (P4-35) DEA-6VDCC 35
- (P4-36) EGND 36
- (P4-37) DEA+15.5VDCB 37
- (P4-38) DEA-15.5VDCB 38
- (P4-39) DEA+28VDCB 39
- (P4-40) DEA+28VDCB 40
- (P4-41) EGND 41

PRIMARY {

PRIMARY {

(M83513/01-CN) P2 A2J6 MDM-21PSM2-A172

11	11	1	1	(P1-1) DS1IN
10	10	2	2	(P1-2) COMMON
21	21	12	12	(P4-2) COMMON
20	20	13	13	OPEN
19	19	14	14	OPEN
9	9	3	3	OPEN
8	8	4	4	OPEN
7	7	5	5	OPEN
18	18	15	15	OPEN
17	17	16	16	OPEN
16	16	17	17	OPEN
6	6	6	6	OPEN
5	5	7	7	OPEN
4	4	8	8	OPEN
15	15	18	18	OPEN
14	14	19	19	OPEN
13	13	20	20	OPEN
3	3	9	9	OPEN
2	2	10	10	OPEN
1	1	11	11	OPEN
12	12	21	21	OPEN

(M83513/01-CN) P3 A2J7 MDM-21PSM2-A172

1	1	11	11	(P1-6) HR600POW (BAKEOUT)	} PRIMARY
2	2	10	10	(P1-7) HEATERCOM A	
12	12	21	21	(P1-8) HR602 & HR603POW	} REDUNDANT
13	13	20	20	(P4-6) HR601POW (BAKEOUT)	
14	14	19	19	(P4-7) HEATERCOM B	} REDUNDANT
3	3	9	9	(P4-8) HR604 & HR605POW	
4	4	8	8	(P1-9) RT600 BLUE	} PRIMARY
5	5	7	7	(P1-10) RT600 GOLD	
15	15	18	18	(P1-11) RT600 GOLD	} REDUNDANT
16	16	17	17	(P4-9) RT601 BLUE	
17	17	16	16	(P4-10) RT601 GOLD	} REDUNDANT
6	6	6	6	(P4-11) RT601 GOLD	
7	7	5	5	(P1-12) RT700 BLUE	} REDUNDANT
8	8	4	4	(P1-13) RT700 GOLD	
18	18	15	15	(P1-14) RT700 GOLD	} REDUNDANT
19	19	14	14	(P4-12) RT701 BLUE	
20	20	13	13	(P4-13) RT701 GOLD	} REDUNDANT
9	9	3	3	(P4-14) RT701 GOLD	
10	10	2	2	OPEN	} REDUNDANT
11	11	1	1	CHASSIS GROUND	
21	21	12	12	OPEN	

- (NOT USED) DS2IN 1
- (P2-21) COMMON 2
- (P1-3) PWR-SAFE 3
- (P1-4) FPTEMP-B 4
- OPEN 5
- (P3-13) [BAKEOUT] HR601POW 6
- (P3-14) HEATERCOM B 7
- (P3-3) HR604 & HR605POW 8
- (P3-16) RT601 BLUE 9
- (P3-17) RT601 GOLD 10
- (P3-6) RT601 GOLD 11
- (P3-19) RT701 BLUE 12
- (P3-20) RT701 GOLD 13
- (P3-9) RT701 GOLD 14
- (NOT USED) CHASSIS GND 15
- (P1-16) HKVOUT 16
- (P1-17) HKADD2 17
- (P1-18) HKADD1 18
- (P1-19) HKADD0 19
- (P1-20) HEN40 20
- (P1-21) HEN32 21
- (P1-22) HEN24 22
- (P1-23) HEN16 23
- (P1-24) HEN8 24
- (P1-25) HEN0 25
- (P1-26) FLIP-P1TOB 26
- (P1-27) FLIP-P2TOB 27
- (P1-28) FLIP-P3TOB 28
- (P1-29) FLIP-P4TOB 29
- (P1-30) FLIP-P5TOB 30
- (P1-31) FLIPTOB 31
- (P1-32) EGND 32
- (P1-33) DEA+6VDCB 33
- (P1-34) DEA+6VDCB 34
- (P1-35) DEA-6VDCC 35
- (P1-36) EGND 36
- (P1-37) DEA+15.5VDCB 37
- (P1-38) DEA-15.5VDCB 38
- (P1-39) DEA+28VDCB 39
- (P1-40) DEA+28VDCB 40
- (P1-41) EGND 41

REDUNDANT {

REDUNDANT {

- 22 AWG STRANDED COPPER WIRE TEFLON INSULATED
- 24 AWG STRANDED COPPER WIRE TEFLON INSULATED
- 26 AWG STRANDED NICKEL WIRE TEFLON INSULATED
- 26 AWG TWISTED PAIR COPPER WIRE TEFLON INSULATED

W6 HEATER AND LED CONTROL
(ASSY 36-30404)

(KA41/127BPV30MCTH) A4A12J2 P4 (KA41/127BEV33FR TAH)

SIZE	CAGE CODE	DWG. NO.	REV.
C	80230	36-03020.01	F
SCALE	NONE	SHEET	7