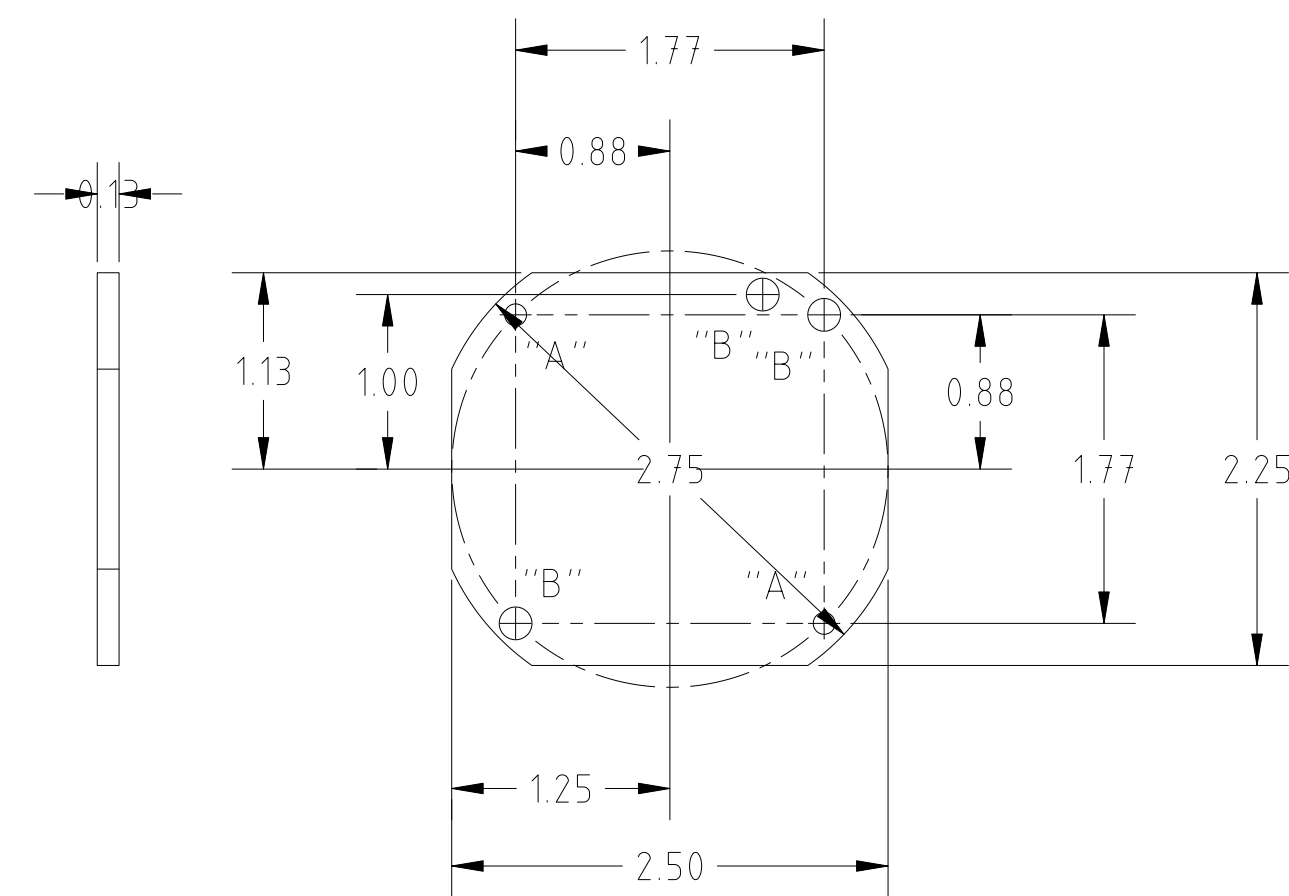
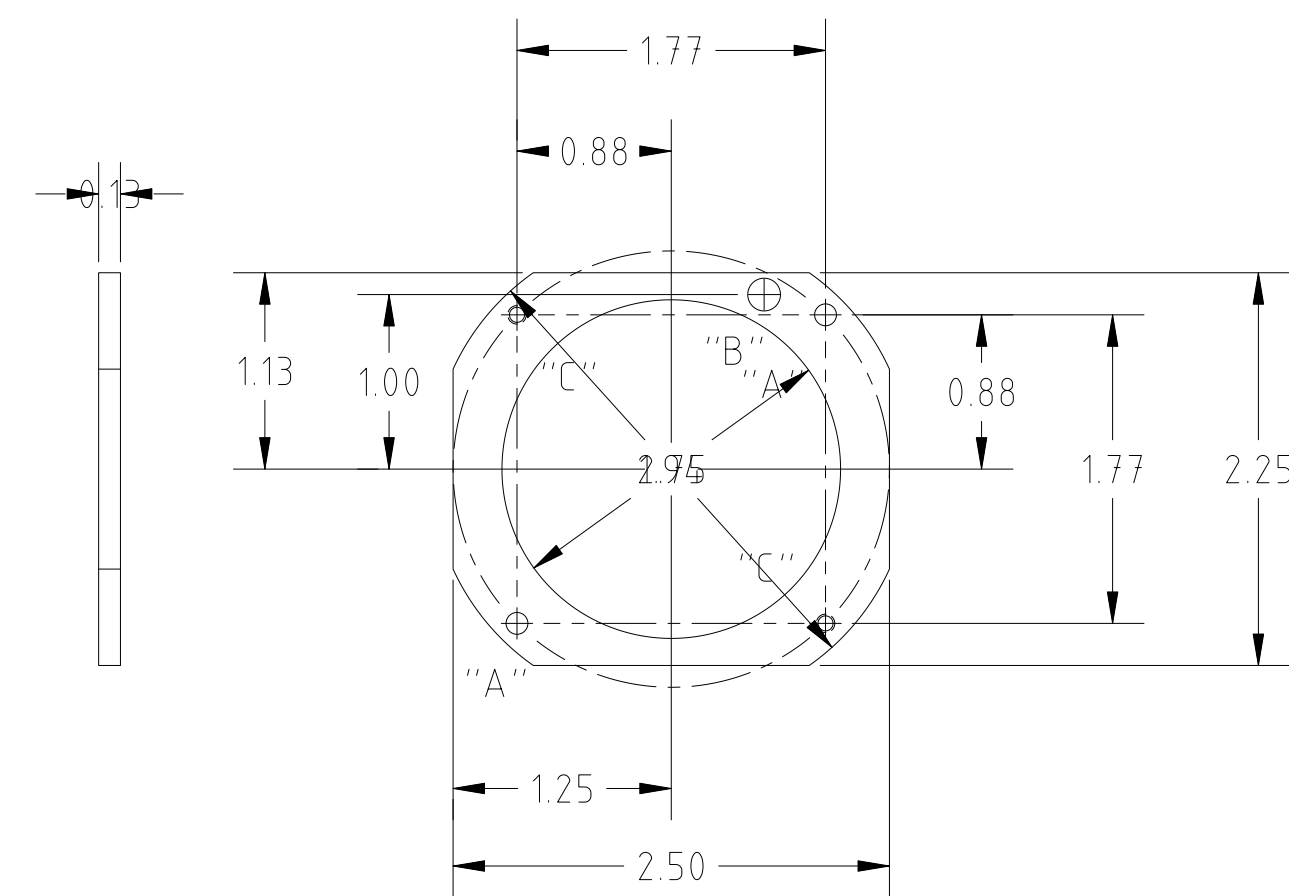


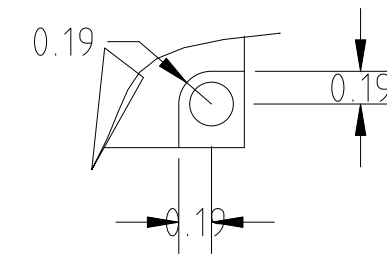
REVISIONS					
REV.	ECO NO.	DISCRPTION	CHECKED	APPROVED	DATE



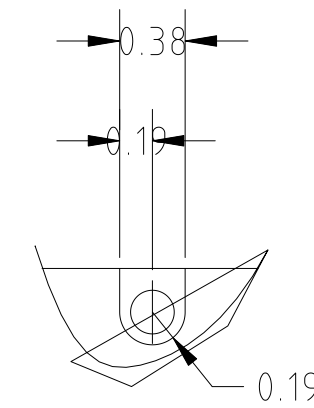
36-02405-3



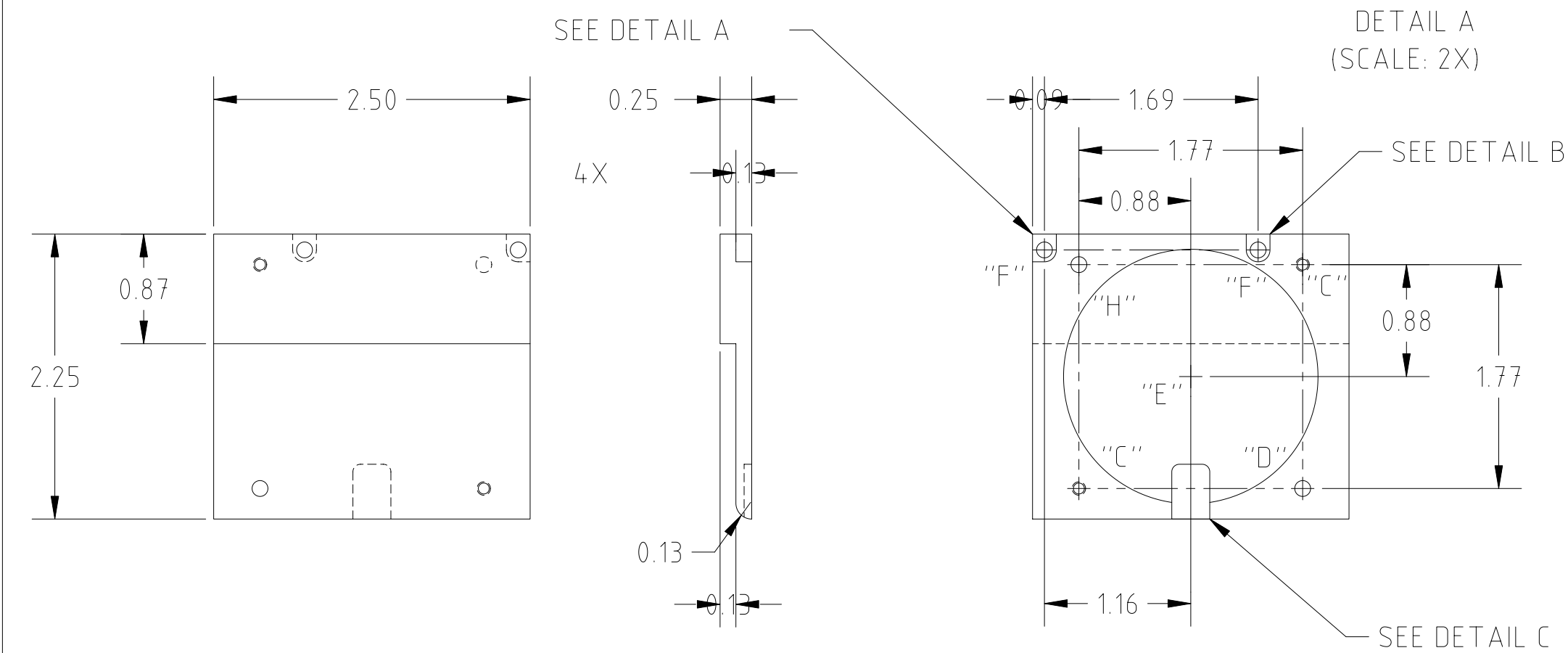
36-02405-2



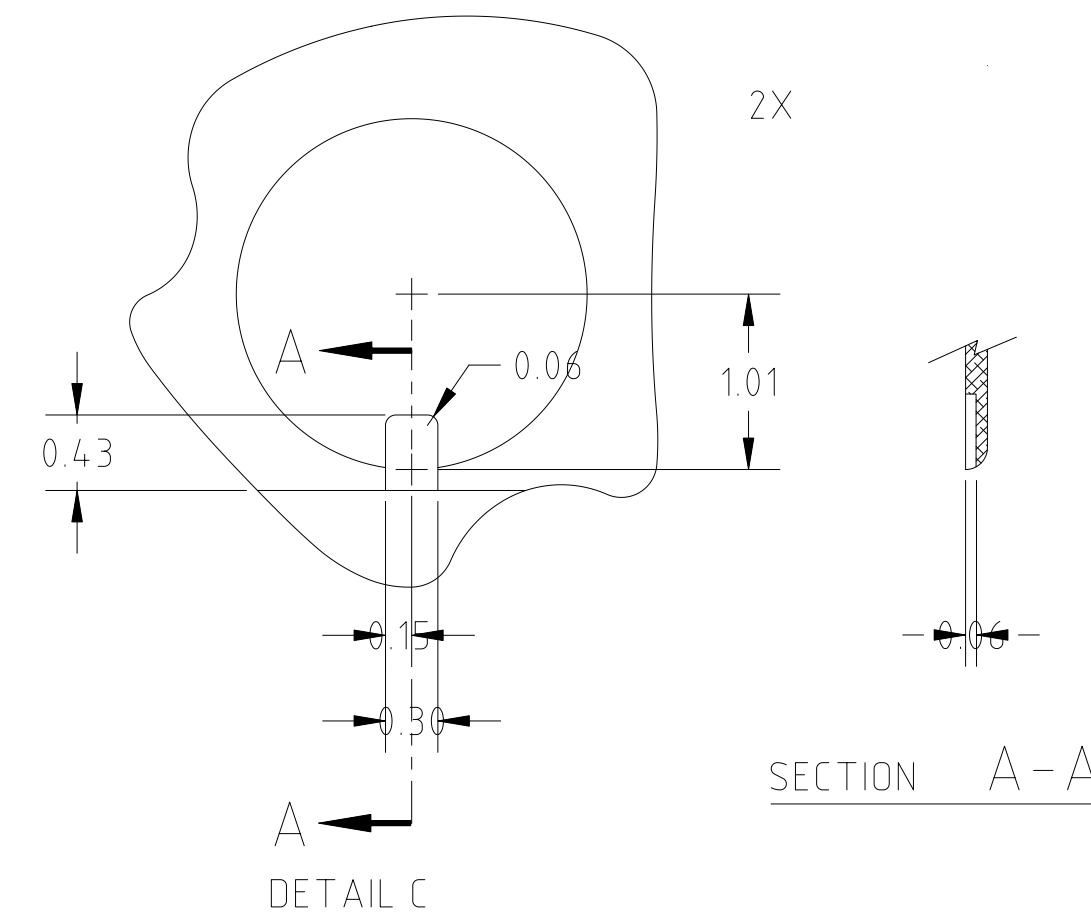
DETAIL A
(SCALE: 2X)



DETAIL B
(SCALE: 2X)



36-02405-1



SECTION A-A

HOLE	DESCRIPTION	QTY
A	φ.107-φ.112	4
B	φ.186-190	2
C	TAP #2-56-UNC-2B THRU	4
D	φ.107-φ.112 THRU	1
E	φ2.010 ±.008 ±.030	1
F	φ.107-112 THRU φ.186-190 .125 ∇	2
H	φ.107-φ.112 X .125	1

NOTES:

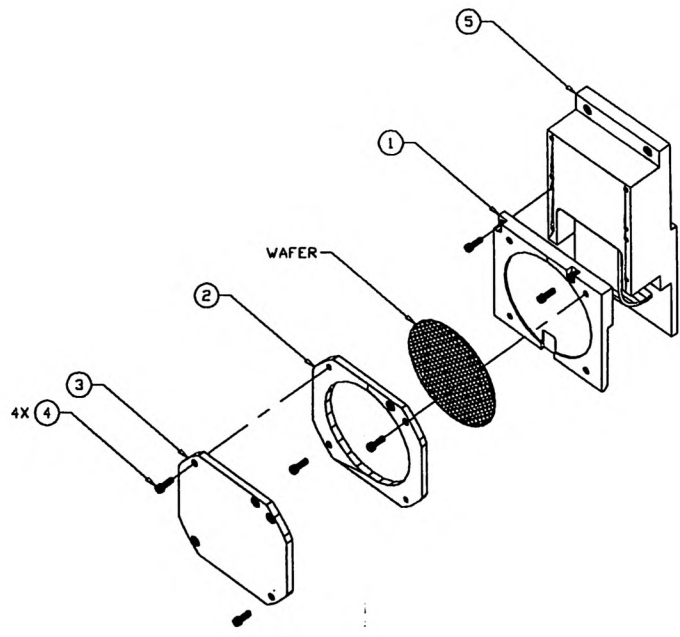
1. DEBURR AND BREAK SHARP EDGES.
2. MACHINED SURFACES 125 MAX. ✓
3. FINISH: AS MACHINED. DO NOT POLISH.

36-XXXXX	ACIS	UNLESS OTHERWISE SPECIFIED DIMENSIONS ARE IN INCHES TOLERANCE - ANGLES ± 1° 3 PLACE DECIMALS ± .005 2 PLACE DECIMALS ± .01
NEXT ASSEMBLY	USED ON	
APPLICATION		

MATERIAL
ALUMINUM
6061-T6

NAME	DATE	MASSACHUSETTS INSTITUTE OF TECHNOLOGY CENTER FOR SPACE RESEARCH CAMBRIDGE, MA 02139		
DRAWN	H.C. WEST	6/28/95	OPTICAL WITNESS SAMPLE HOLDER	
CHECKED				
APPROVED				
RELEASED				
SIZE	D	FSCM NO. 80230	DWG NO. 36-02405	REV 01
WEIGHT	SCALE	1/1	SHEET	1 OF 2

REVISIONS					
REV.	ECO NO.	DESCRIPTION	CHECKED	APPROVED	DATE
		SEE SHEET 1			



SIZE	CHG. CODE	CHG. NO.	REV.
D	80230	36-02405	01
SCALE		SHEET	2 OF 2