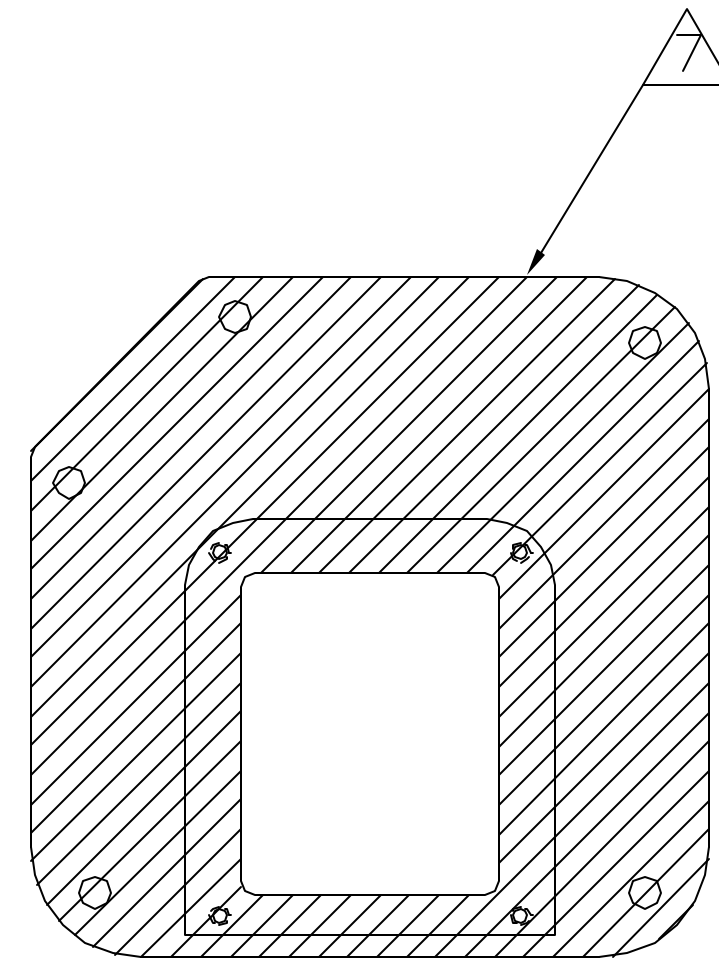
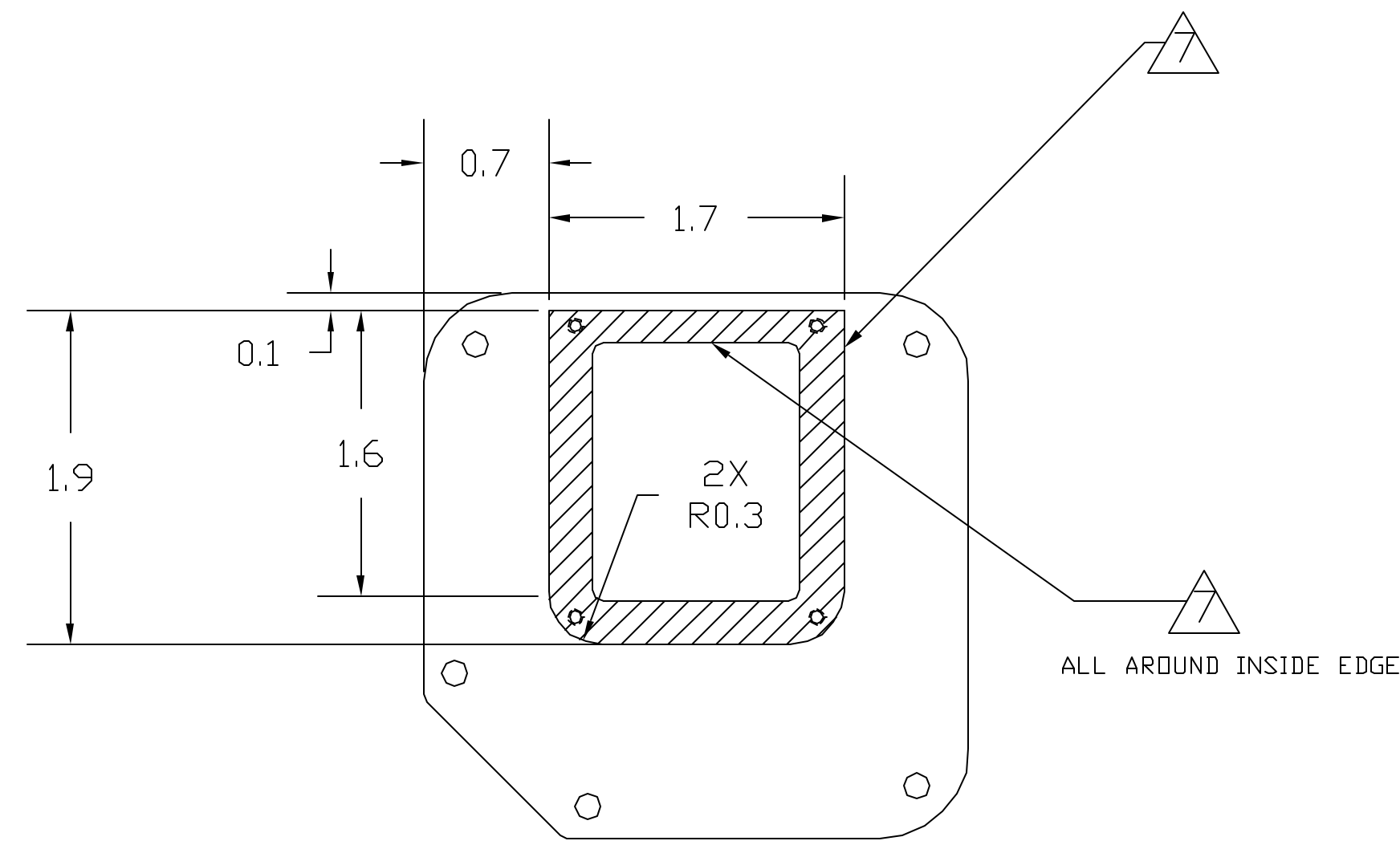


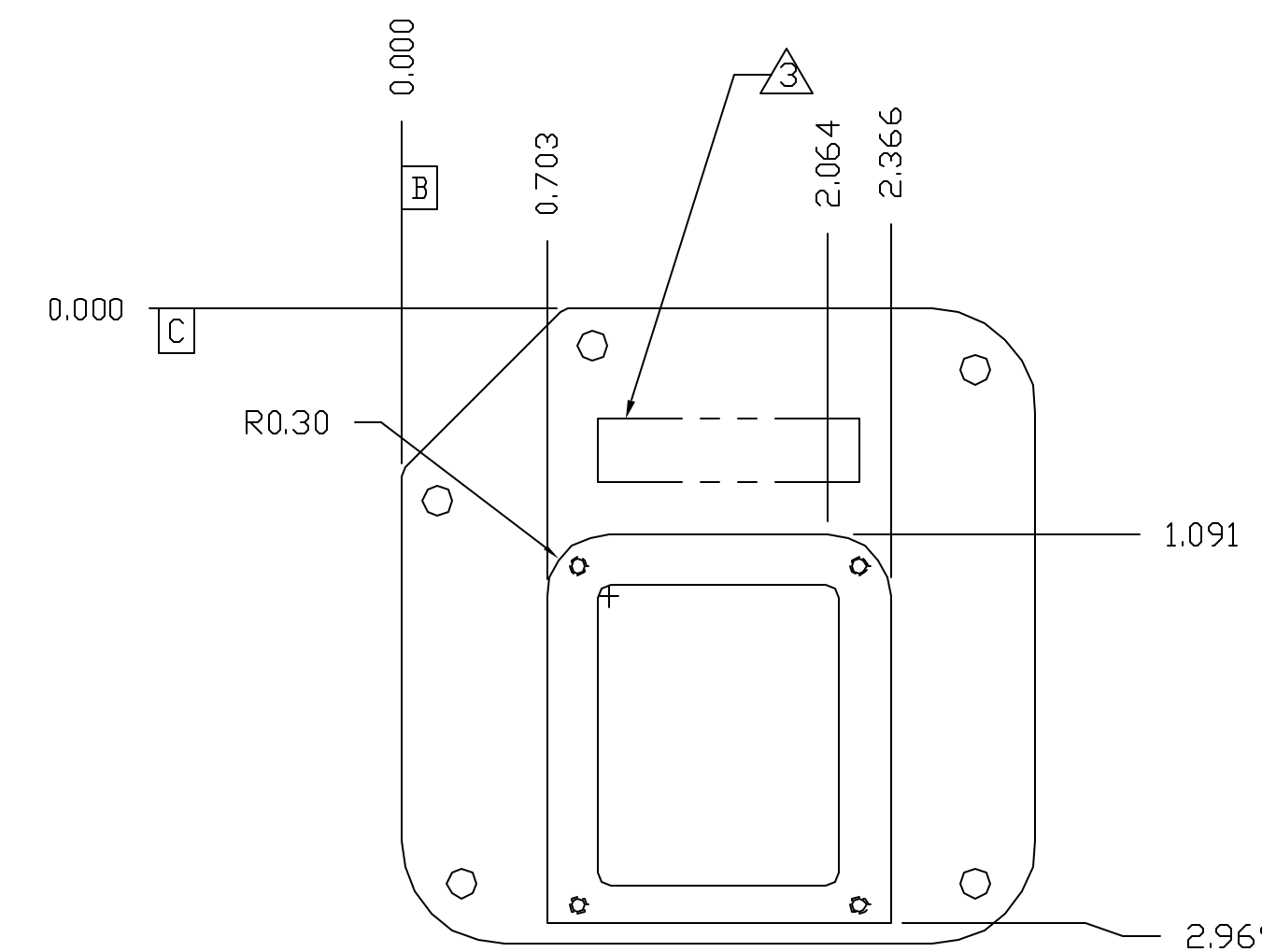
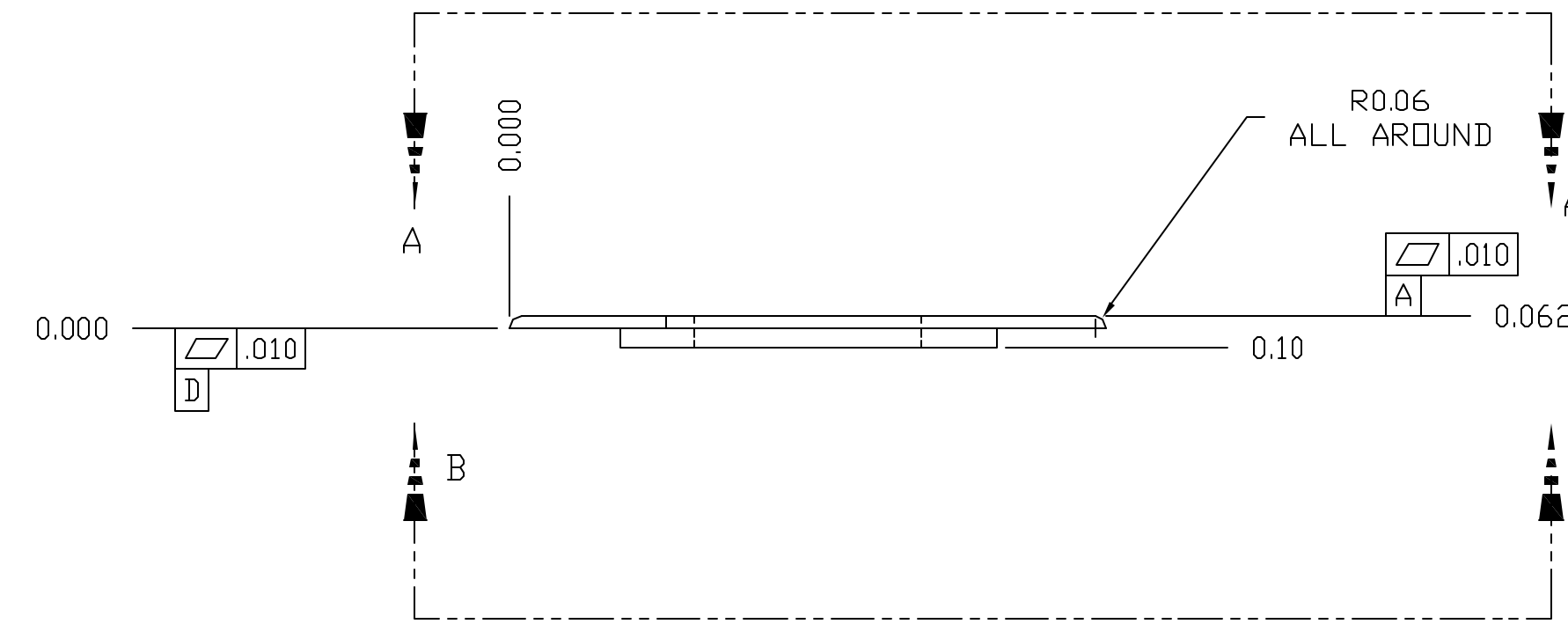
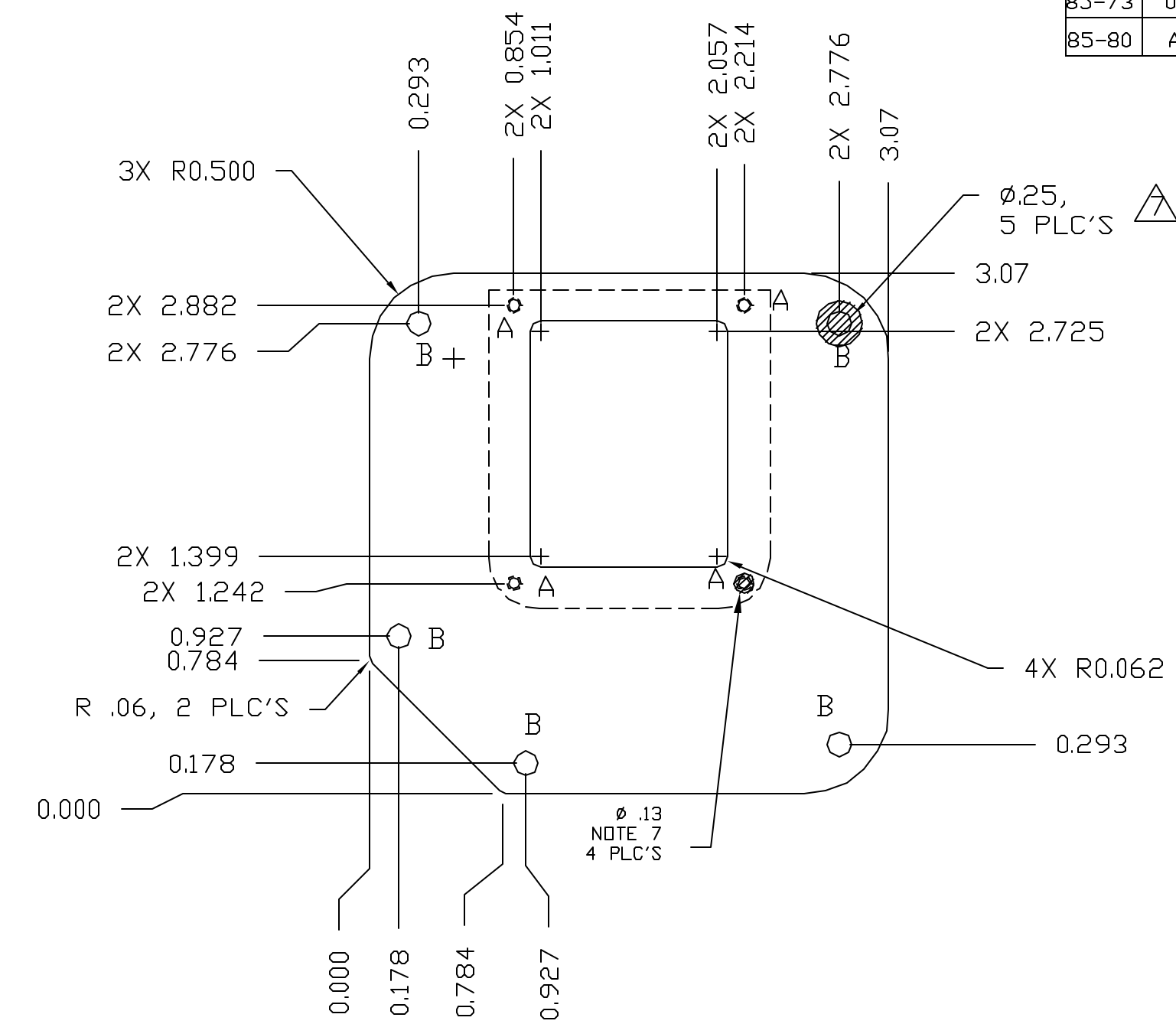
REVISIONS					
ECO	REV	DESCRIPTION	CHECKED	APPROVED	DATE
85-73	01	INITIAL RELEASE		M. SMITH	2/27/04
85-80	A	RELEASE FOR BUILD			



VIEW B-B



VIEW A-A



HOLE CHART			
HOLE	QTY	TOLERANCE	DESCRIPTION
A	4	$\text{Ø} \ 0.010 \ (M) \ C \ A \ B$	$\text{Ø} .094 \ ^{+.003}_{-.002}$ THRU, $\sphericalangle \text{Ø} .09-.11 \times 120^\circ \pm 5^\circ$, TAP THRU FOR .086-56 UNC HELICAL STI. INSTALL INSERT (FN 1) 3/4 - 1 1/2 PITCH BELOW SURFACE. INSTALL INSERT AFTER FINISH.
B	5	$\text{Ø} \ 0.010 \ (M) \ D \ A \ B$	$\text{Ø} .144 \ \pm .003$ THRU

NOTES:

- ALL DIMENSIONS ARE IN INCHES.
- CLEANLINESS REQUIREMENTS PER SN-C-0005 LEVEL VC-SENSITIVE.
- PERMANENT INK STAMP PN IN .12 HIGH CHARACTERS WITH ITEM 2. LOCATE APPROXIMATELY WHERE SHOWN.
- ANODIZE PER NASA/JSC PRC-5006, TYPE II, CLASS 2, COLOR BLACK.
- INSTALL INSERTS PER MS33537, REMOVE TANG. INSTALL AFTER FINISH
- DEBUR AND BREAK SHARP EDGES. CORNER RADII .06 MAX. FILLET RADIUS .02 MAX.
- MASK FROM ANODIZED FINISH. CONVERSION CAOT PER MIL-C-5541, CLASS 3.
- UNTOLERANCED DIMENSIONS LOCATING TRUE POSITION ARE BASIC.

UNLESS OTHERWISE SPECIFIED DIMENSIONS ARE IN INCHES TOLERANCE: ANGLES +/- 1° 3 PLACE DECIMALS +/- .005 2 PLACE DECIMALS +/- .01		NAME M. SMITH	DATE 3/7/04	Massachusetts Institute of Technology Center for Space Research VOILA	
MATERIAL ALUM 6061 T6		CHECKED		COVERPLATE, ENCLOSURE PADDLE ASSY	
85-40500	VOILA	APPROVED		SIZE D	FSCM NO. 80230
NEXT ASSEMBLY	USED ON	RELEASED		DWG NO. 85-40507	REV A
APPLICATION		CAD FILE		SCALE 1:1	SHEET 1 OF 1