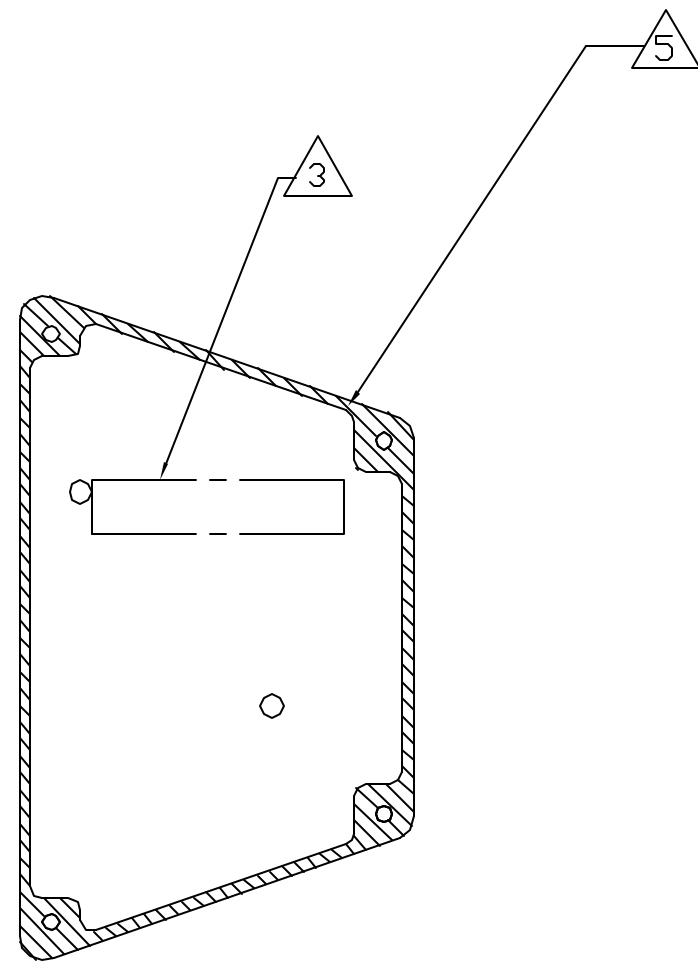
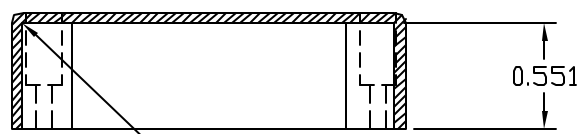
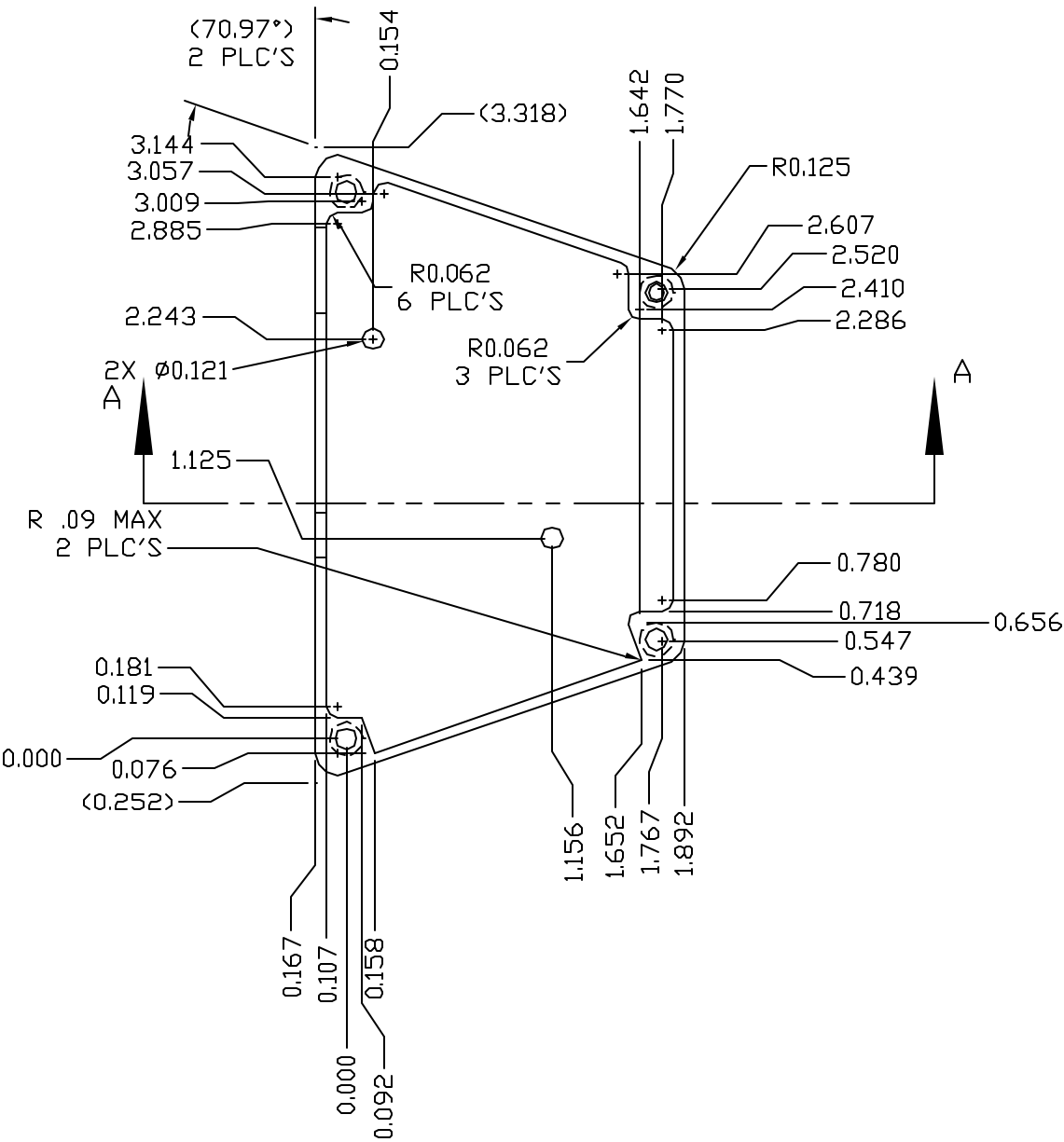
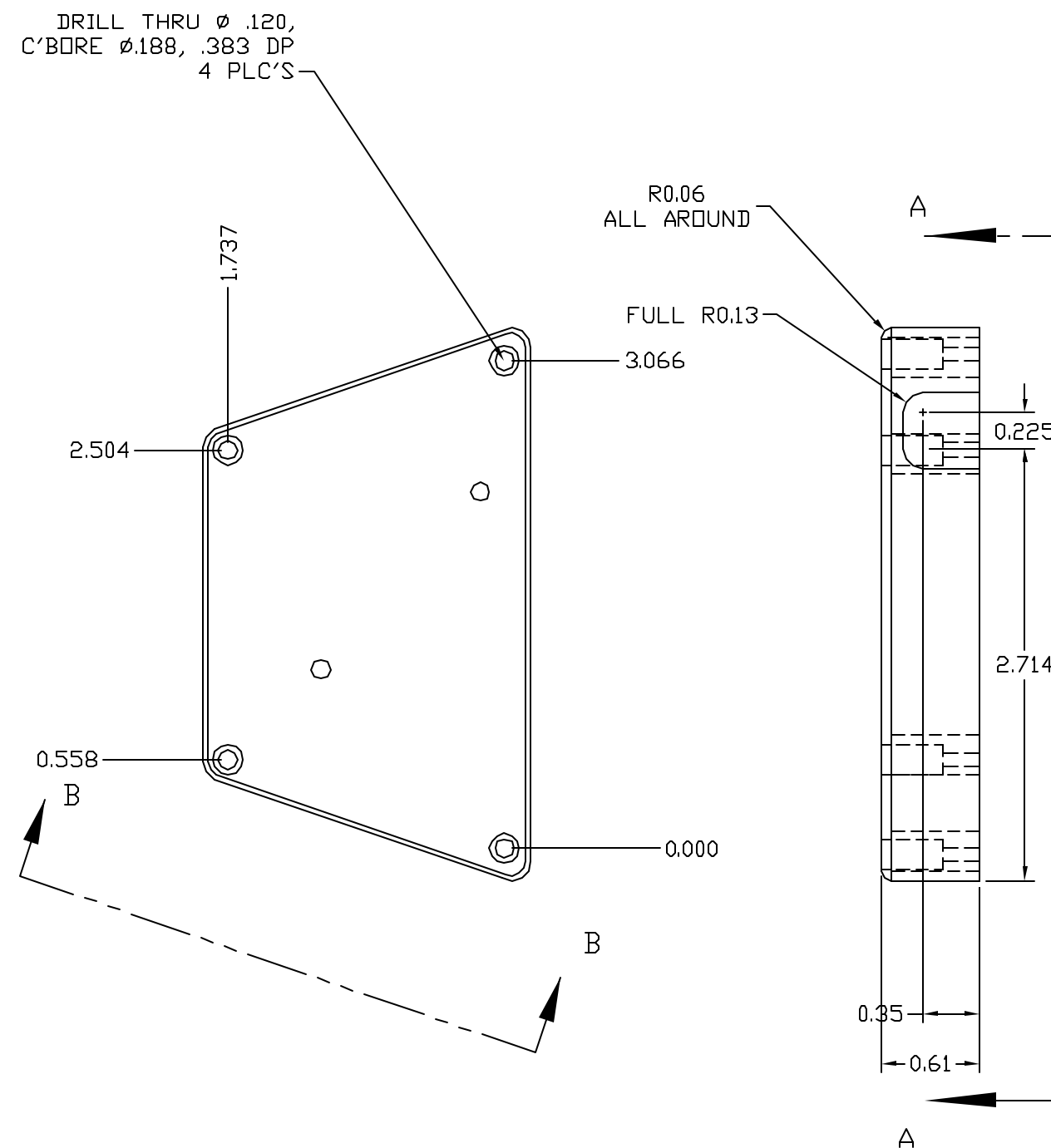


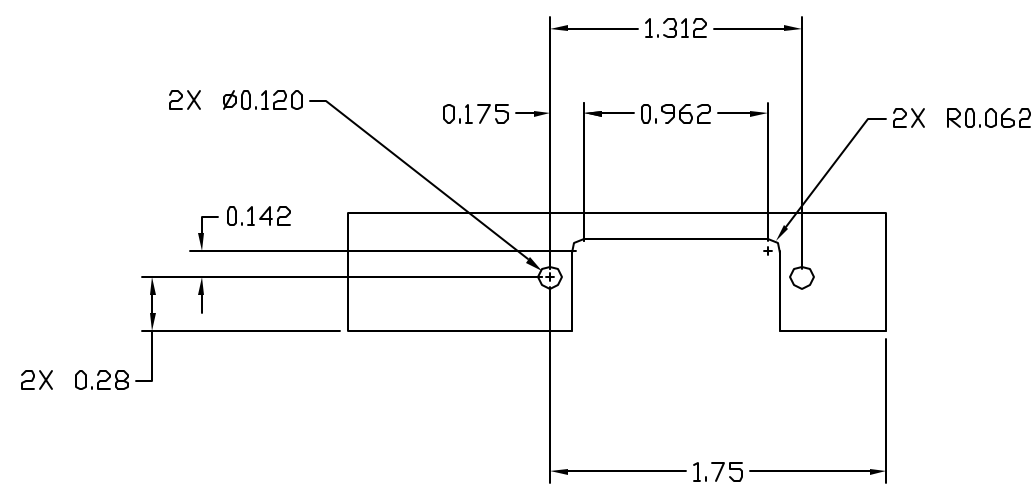
REVISIONS					
ECO	REV	DESCRIPTION	CHECKED	APPROVED	DATE
85-121	01	PRE RELEASE			
85-150	A	WAS DRG. NO. 85-40100.50 ADD D-SUB CUT OUT, ADD HOLE AND SLOT	R. GOEKE	R. FOSTER	10/20/04
85-184	B	INCREASE SLOT AREA.			



VIEW A-A



SECTION A-A



VIEW B-B

NOTES:

1. DEBUR AND BREAK SHARP EDGES.
2. CLEANLINESS REQUIREMENTS PER SN-C-0005 LEVEL VC-SENSITIVE.
3. PERMANENT INK STAMP PN AND REV LETTER IN .12 HIGH CHARACTERS WITH ITEM 1. LOCATE APPROXIMATELY WHERE SHOWN. ENGRAVING IS ACCEPTABLE.
4. ANODIZE PER NASA/JSC PRC 5006, CLASS 2 TYPE II, COLOR BLACK.
5. MASK FROM BLACK ANODIZE AS SHOWN. CHEM FILM PER MIL-C-5541 CLASS 3.

		UNLESS OTHERWISE SPECIFIED DIMENSIONS ARE IN INCHES TOLERANCE: ANGLES +/- 1' 3 PLACE DECIMALS +/- .005 2 PLACE DECIMALS +/- .01	NAME	DATE	Massachusetts Institute of Technology Center for Space Research VOILA			
			DRAWN	M. SMITH				10/19/04
		MATERIAL 6061 T6 ALUM NOTE 4, 5 FINISH	CHECKED	R. GOEKE	10/19/04	CONNECTOR COVER PLATE HEAD DISPLAY ASSEMBLY		
85-40100			APPROVED	R. FOSTER	10/20/04			
NEXT ASSEMBLY			USED ON	RELEASED	D. GAGE			10/22/04
APPLICATION			CAD FILE		SIZE	FSCM NO.	DWG NO.	REV
					C	80230	85-40150	B
					SCALE	1:1		SHEET
							1 OF 1	