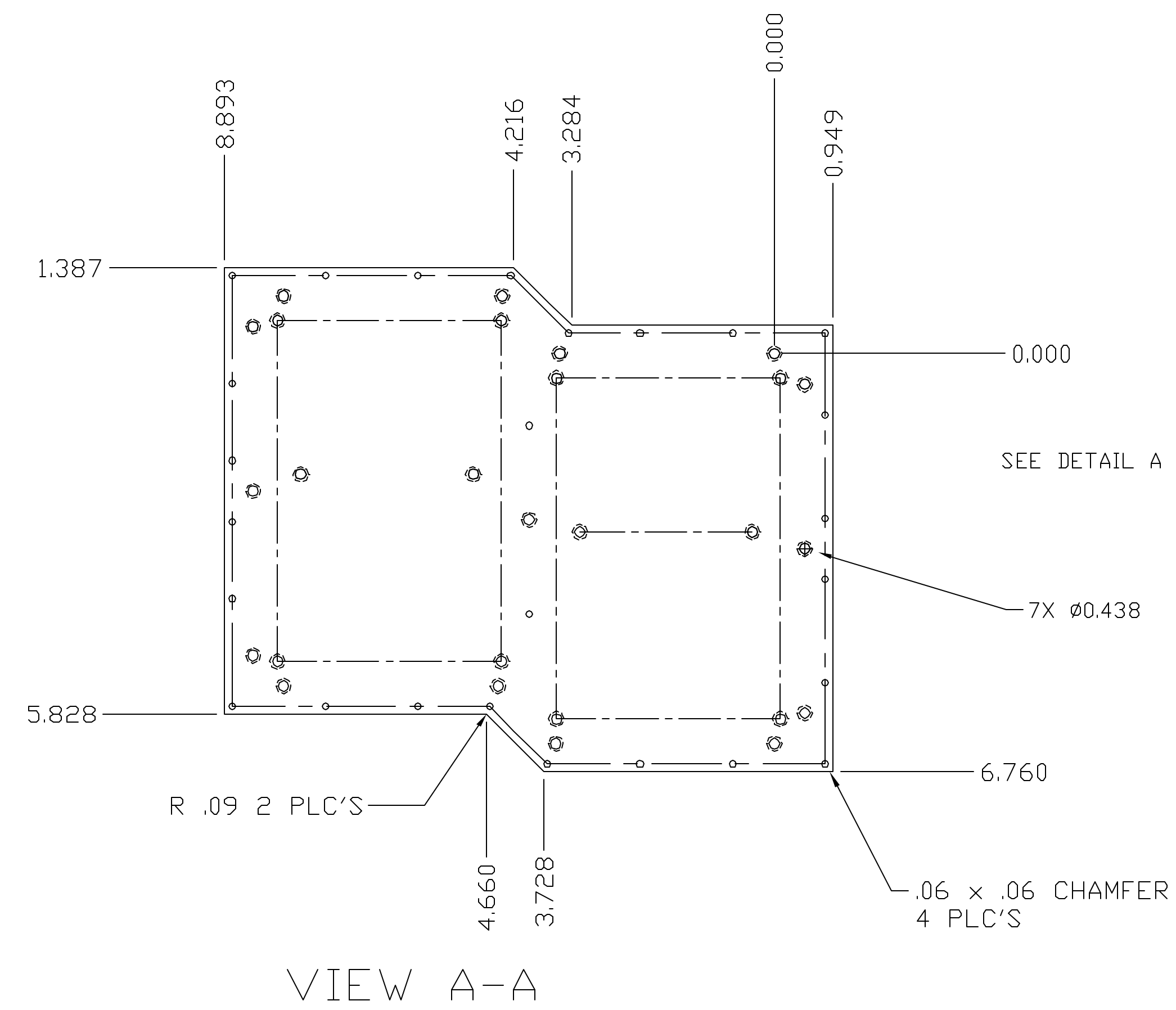
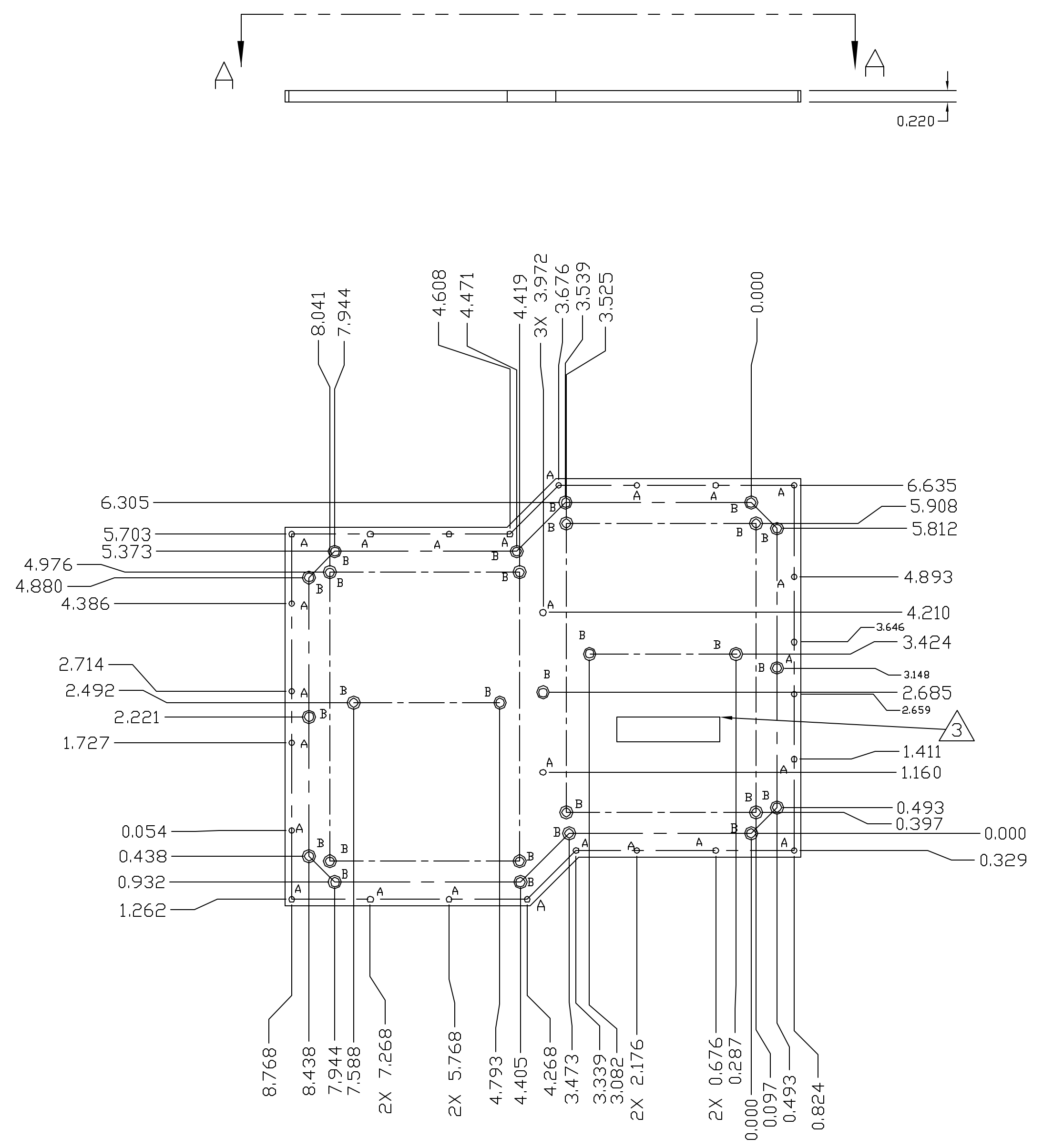


REVISIONS					
ECO	REV	DESCRIPTION	CHECKED	APPROVED	DATE
85-108	A	INITIAL RELEASE			



- NOTES:
1. ALL DIMENSIONS ARE IN INCHES.
 2. RADIUS ALL EDGES AND CORNERS .04- .06.
 3. ENGRAVE PART NUMBER AND REV LETTER IN .125 HIGH CHARACTERS PRIOR TO FINISH. LOCATE APPROXIMATELY WHERE SHOWN.
 4. CHEMFILM PER MIL-C5541, CLASS 3

HOLE CHART			
HOLE	QTY	TOLERANCE	DESCRIPTION
A	26	$\Phi \pm 0.005 \text{ (M) A B C}$	$\Phi .143 \pm .003$ THRU C'SINK $120^\circ \pm 5^\circ \Phi .155$, FAR SIDE.
B	27	$\Phi \pm 0.005 \text{ (M) A B C}$	DRILL THRU $.143 \pm .003$. C'BORE $\Phi .250 \pm .003$, .117 DP. C'SINK $120^\circ \pm 5^\circ \Phi .155$

UNLESS OTHERWISE SPECIFIED DIMENSIONS ARE IN INCHES TOLERANCE: ANGLES $\pm 1^\circ$ 3 PLACE DECIMALS $\pm .005$ 2 PLACE DECIMALS $\pm .01$		NAME	DATE	Massachusetts Institute of Technology Center for Space Research VOILA
85-30100	VOILA	DRAWN M. SMITH	4/22/04	
MATERIAL 6061 T6 AL		CHECKED		INTERFACE PLATE, NVIS/MIT ELECTRONICS
NOTE 4 FINISH		APPROVED		
NEXT ASSEMBLY	USED ON	RELEASED		SIZE D
APPLICATION		CAD FILE	85-	FSCM NO. 80230
				DWG NO. 30-30325
				SCALE 1:1
				SHEET 1 OF 1