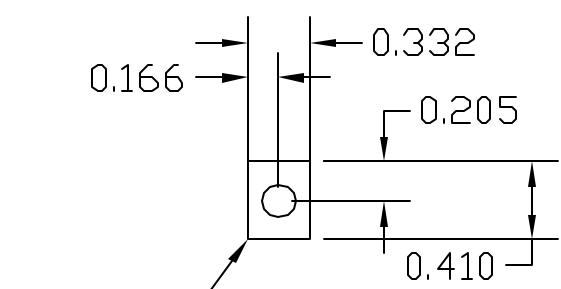


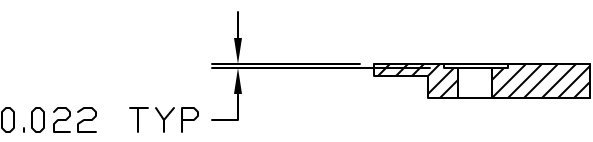
8 | 7 | 6 | 5 | 4 | 3 | 2 | 1

REVISIONS					
ECO	REV	DESCRIPTION	CHECKED	APPROVED	DATE
85-154	A	INITIAL RELEASE			

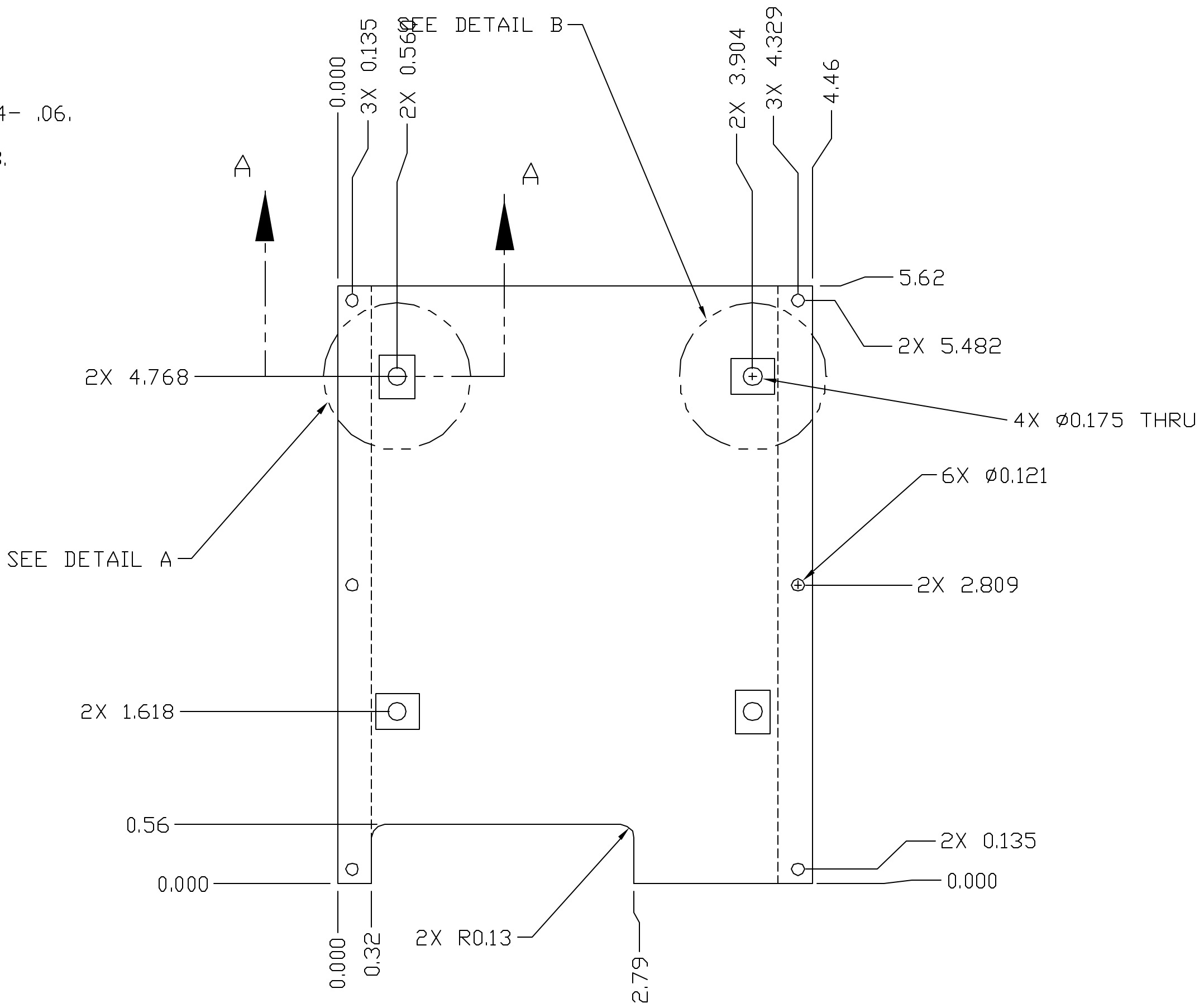
- NOTES:
1. ALL DIMENSIONS ARE IN INCHES.
 2. RADIUS ALL EDGES AND CORNERS .04- .06. FILLET RADIUS .010
 3. CHEMFILM PER MIL-C-5541, CLASS 3.



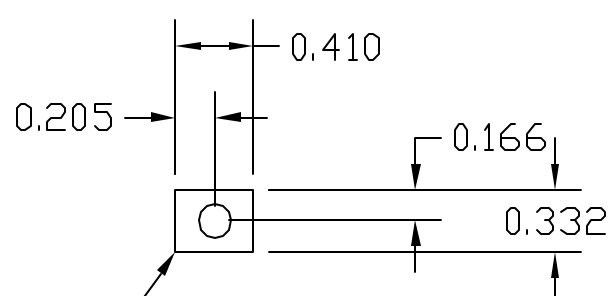
DETAIL A
TYP 2 PLC'S



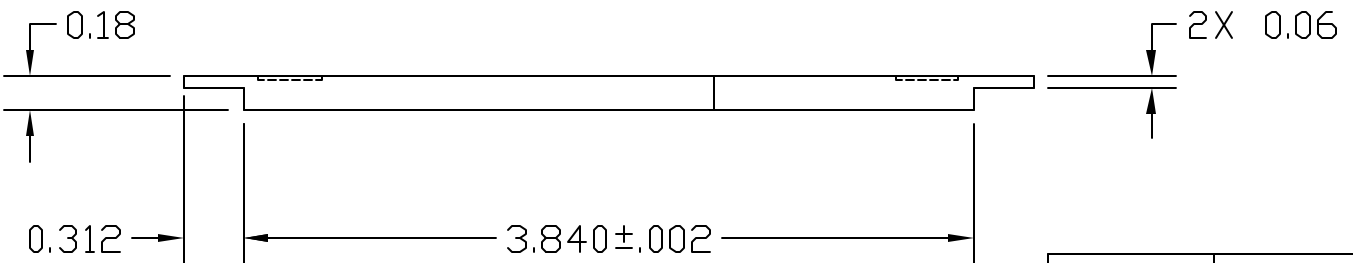
SECTION A-A



R .09
TYP



DETAIL B
TYP 2 PLC'S



UNLESS OTHERWISE SPECIFIED DIMENSIONS ARE IN INCHES TOLERANCE: ANGLES +/- 1° 3 PLACE DECIMALS +/- .005 2 PLACE DECIMALS +/- .01		NAME	DATE	Massachusetts Institute of Technology Center for Space Research VOILA
MATERIAL 6061 T6 AL.		DRAWN M. SMITH	5/19/04	
NOTE 3 FINISH		CHECKED		TOP PLATE, CODA HUB ASSY.
85-30316.01 VOILA		APPROVED		
NEXT ASSEMBLY USED ON		RELEASED		SIZE B
APPLICATION		DWG NO. 80230	DWG NO. 85-30316.0104	REV A
		SCALE 1:1	SHEET 1 OF 1	

8 | 7 | 6 | 5 | 4 | 3 | 2 | 1