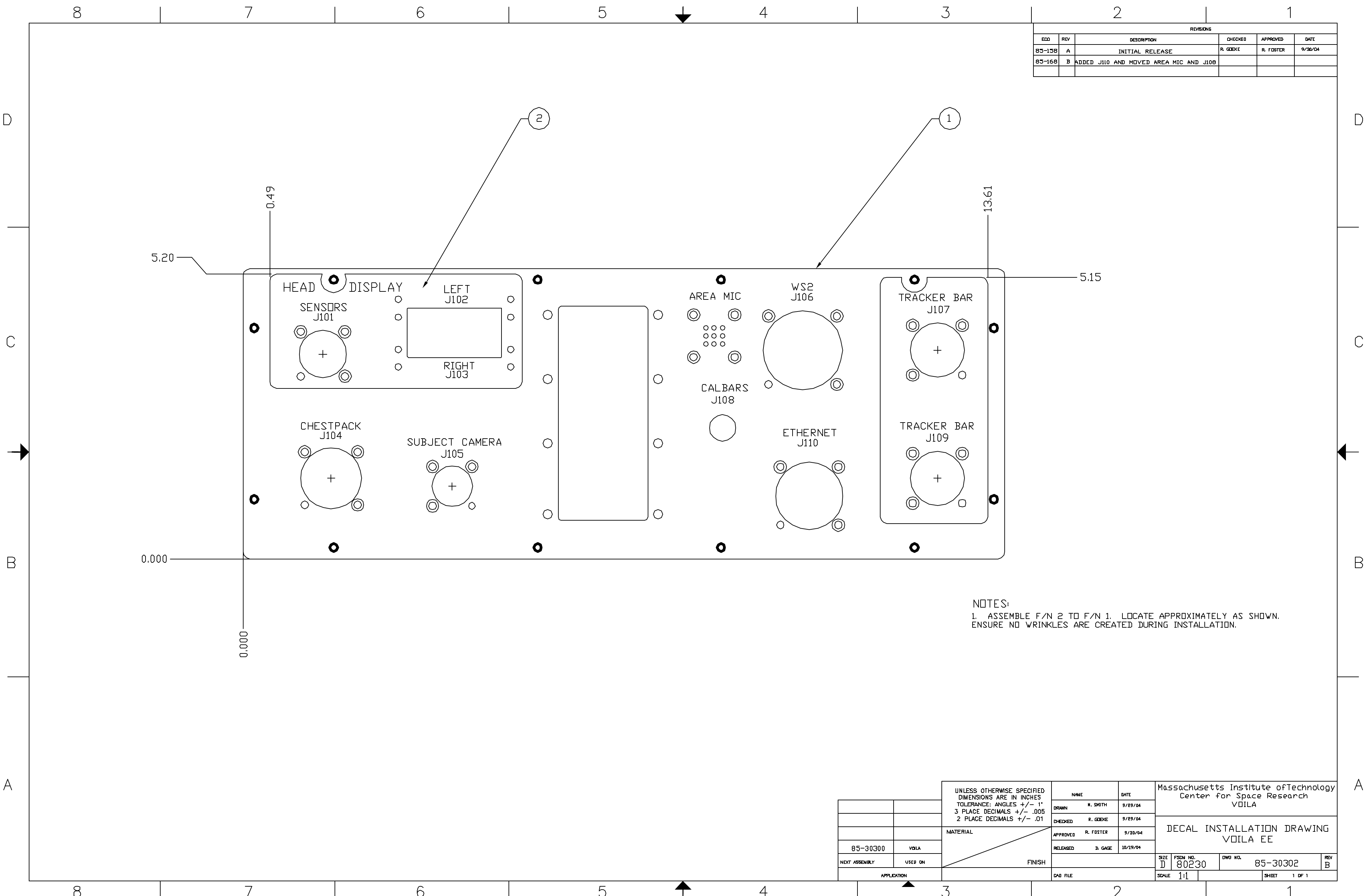


REVISIONS					
ECO	REV	DESCRIPTION	CHECKED	APPROVED	DATE
85-158	A	INITIAL RELEASE	R. GEEKE	R. FOSTER	9/28/04
85-168	B	ADDED J110 AND MOVED AREA MIC AND J108			



NOTES:
 1. ASSEMBLE F/N 2 TO F/N 1. LOCATE APPROXIMATELY AS SHOWN.
 ENSURE NO WRINKLES ARE CREATED DURING INSTALLATION.

UNLESS OTHERWISE SPECIFIED DIMENSIONS ARE IN INCHES TOLERANCE: ANGLES +/- 1° 3 PLACE DECIMALS +/- .005 2 PLACE DECIMALS +/- .01		NAME	DATE	Massachusetts Institute of Technology Center for Space Research VOILA	
85-30300	VOILA	DRAWN	R. SMITH	9/29/04	DECAL INSTALLATION DRAWING VOILA EE
		CHECKED	R. GEEKE	9/29/04	
		APPROVED	R. FOSTER	9/30/04	
		RELEASED	D. GAGE	10/19/04	
NEXT ASSEMBLY	USED ON	MATERIAL		FINISH	SIZE
					J
APPLICATION		CAD FILE		SCALE	1:1
				FSDM NO.	80230
				DWG NO.	85-30302
				REV	B
				SHEET	1 OF 1