

8 | 7 | 6 | 5 | 4 | 3 | 2 | 1

REVISIONS					
ECO	REV	DESCRIPTION	CHECKED	APPROVED	DATE
85-138	01	INITIAL RELEASE			

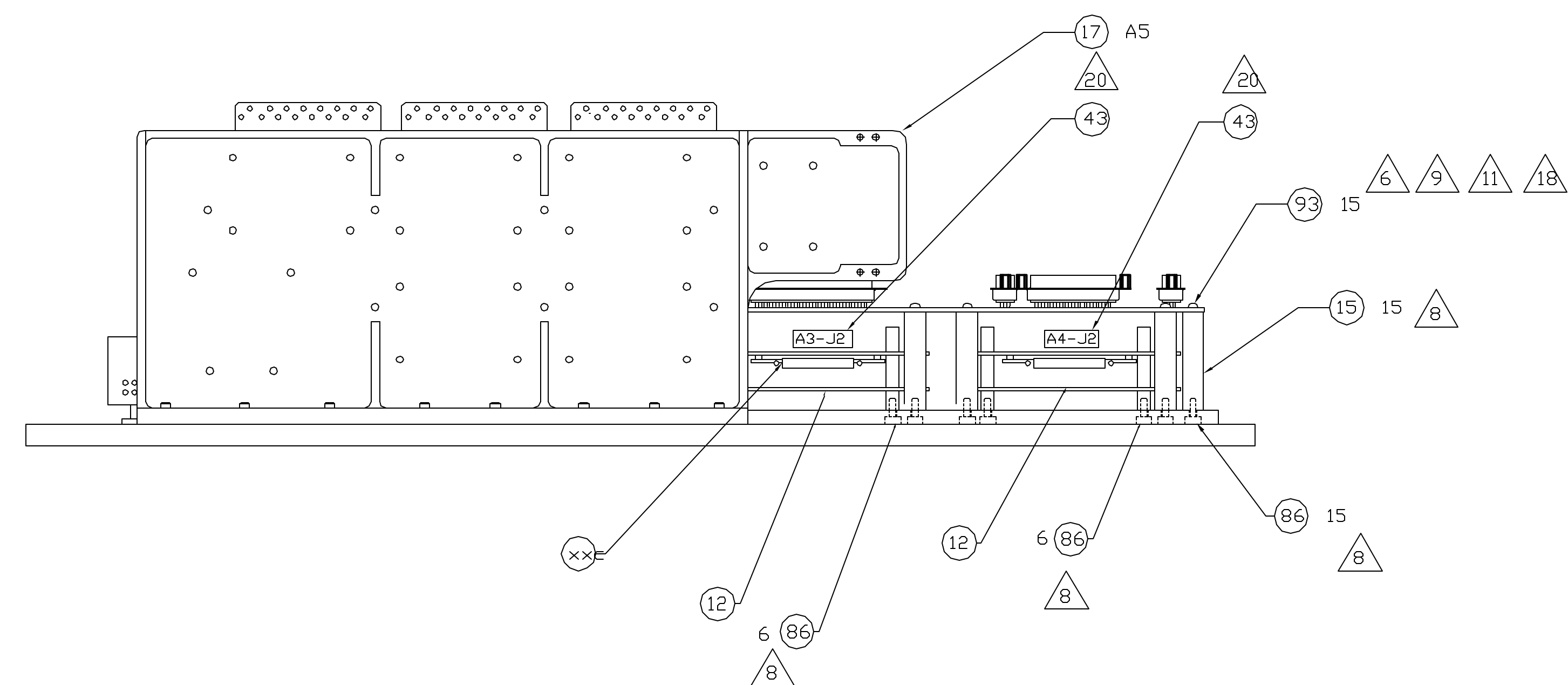
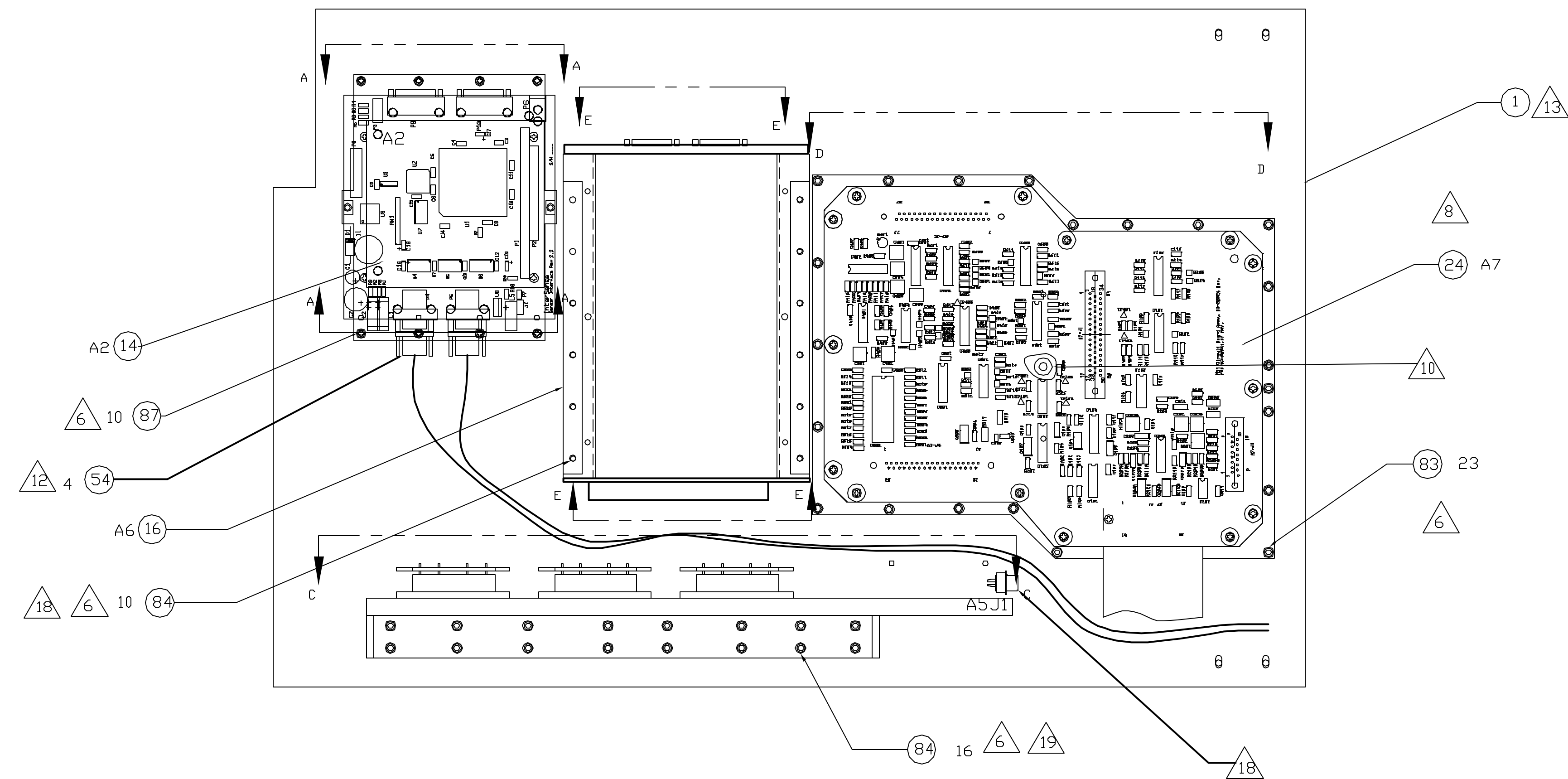
NOTES:

1. REFER TO MIT DRAWING 30-xxxxFOR SCHEMATIC
2. FABRICATE IAW NASA SPEC NHB5300.4(3G)
3. SOLDER IAW NASA SPECIFICATION NAS-STD-8739.2 AND NAS-STD-8739.3.
4. PERFORM CONTACT RETENTION TEST ON ALL CONTACTS PER MSFC-STD-781. RECORD RESULTS IN A.W.D.
5. ELECTRICAL TESTS ARE TO BE PERFORMED IAW NHB5300.4(3G). RECORD RESULTS IN A.W.D.
6. TORQUE #2-56 HARDWARE TO 54 IN-OZ.  
TORQUE #4-40 HARDWARE TO 5 IN-LBS.  
TORQUE #6-32 HARDWARE TO 8 IN-LBS.
7. ITEM IS STATIC SENSITIVE. HANDLE IAW MIT PROCEDURE 99-01003.
8. INSTALL F/N 15 AND 12 TO F/N 25 PRIOR TO INSTALLING ONTO F/N 1.  
ENSURE STANDOFFS ON F/N 12 DO NOT ROTATE WHILE TORQUING. TORQUE HARDWARE TO 6 IN-LBS.  
APPLY SMALL AMOUNT OF F/N 53 TO THREADS OF F/N 86 PRIOR TO INSTALLATION.
9. APPLY SMALL AMOUNT OF F/N 53 TO THE END THREADS OF F/N 93, 83, 84, PRIOR TO INSTALLATION.
10. BOND F/N 15 TO F/N 25 USING F/N 50, AT THE CENTER LOCATION ONLY AFTER NOTE 17. REMOVE PWA TO BOND. REINSTALL PWA.
11. ENSURE STANDOFFS, F/N 15 DO NOT ROTATE WHEN TORQUEING F/N 93.
12. TORQUE TO 54 IN-OZ. SECURE STANDOFFS WHILE TORQUING. SPOTBOND USING F/N XX.
13. REMOVE BASE PLATE FROM SUPPLIED DRAWER AND MACHINE PER DRAWING 85-30301.
14. REMOVE FRONT PANEL COVER PLATE FROM SUPPLIED DRAWER AND MACHINE PER DRAWING 85-30301.
15. WRAP F/N 97 THROUGH SLOT IN F/N 38. USE TO TIE DOWN AND SECURE NVIS CONNECTOR CABLES.
16. TORQUE LEMO CONNECTOR HARDWARE AND LED'S F/N 8 F/N 6 TO 7 IN-LBS. SPOTBOND USING F/N 42.
17. MOUNT F/N 24 TO STANDOFFS F/N 15 PRIOR TO MOUNTING F/N 25 TO F/N 1 TO VERIFY ALIGNMENT OF PWA F/N 24 TO STANDOFFS F/N 15. ADJUST STANDOFFS AS NECESSARY.
18. INSTALL CONTACTS F/N XX ONTO WIRES FROM CB1 ALREADY INSTALLED IN THE SUPPLIED ELECTRINIS DRAWER ASSEMBLY, AND INSTALL INDT CONNECTOR A5-P1 PER SCHEMATIC.  
ROUTE WIRES UNDER ASSEMBLY F/N 16. SPOTBOND WIRE EVERY 3 INCHES USING F/N 98 PRIOR TO MOUNTING F/N 16 TO F/N 1.
19. SECURE WIRES TO BACKPLANE ON F/N 15 PRIOR TO INSTALLING F/N 17 TO F/N 1.  
TORQUE SCREWS ON TERMINAL BLOCK TO 7 IN-LBS. REMOVE AND DISCARD UNUSED TERMINAL BLOCK HARDWARE.
20. TYPE, IN .125 HIGH CHARACTERS, THE CONNECTOR DESIGNATORS AS SHOWN, USING F/N 43, BRADY LABEL. LOCATE APPROX. WHERE SHOWN.
21. SPOTBOND USING F/N 42.
22. TORQUE F/N 13 TO XX IN-LBS. SPOTBOND USING F/N 42.  
TORQUE SCREWS ON TERMINAL BLOCK TO 7 IN-LBS. REMOVE AND DISCARD UNUSED TERMINAL BLOCK HARDWARE.

UNLESS OTHERWISE SPECIFIED DIMENSIONS ARE IN INCHES TOLERANCE: ANGLES +/- 1° 3 PLACE DECIMALS +/- .005 2 PLACE DECIMALS +/- .01		NAME	DATE	Massachusetts Institute of Technology Center for Space Research VOILA			
		DRAWN M. SMITH	5/19/04				
		CHECKED		VOILA EE FABRICATION SUB-ASSEMBLY			
		APPROVED					
		RELEASED					
		FINISH					
SIZE	D	FSDM NO.	80230	DWG NO.	85-30300	REV	01
SCALE	1:1	DAD FILE		SHEET	1 OF 4		

8 | 7 | 6 | 5 | 4 | 3 | 2 | 1

REVISIONS					
ECO	REV	DESCRIPTION	CHECKED	APPROVED	DATE
85-138	01	SEE SHEET 1			

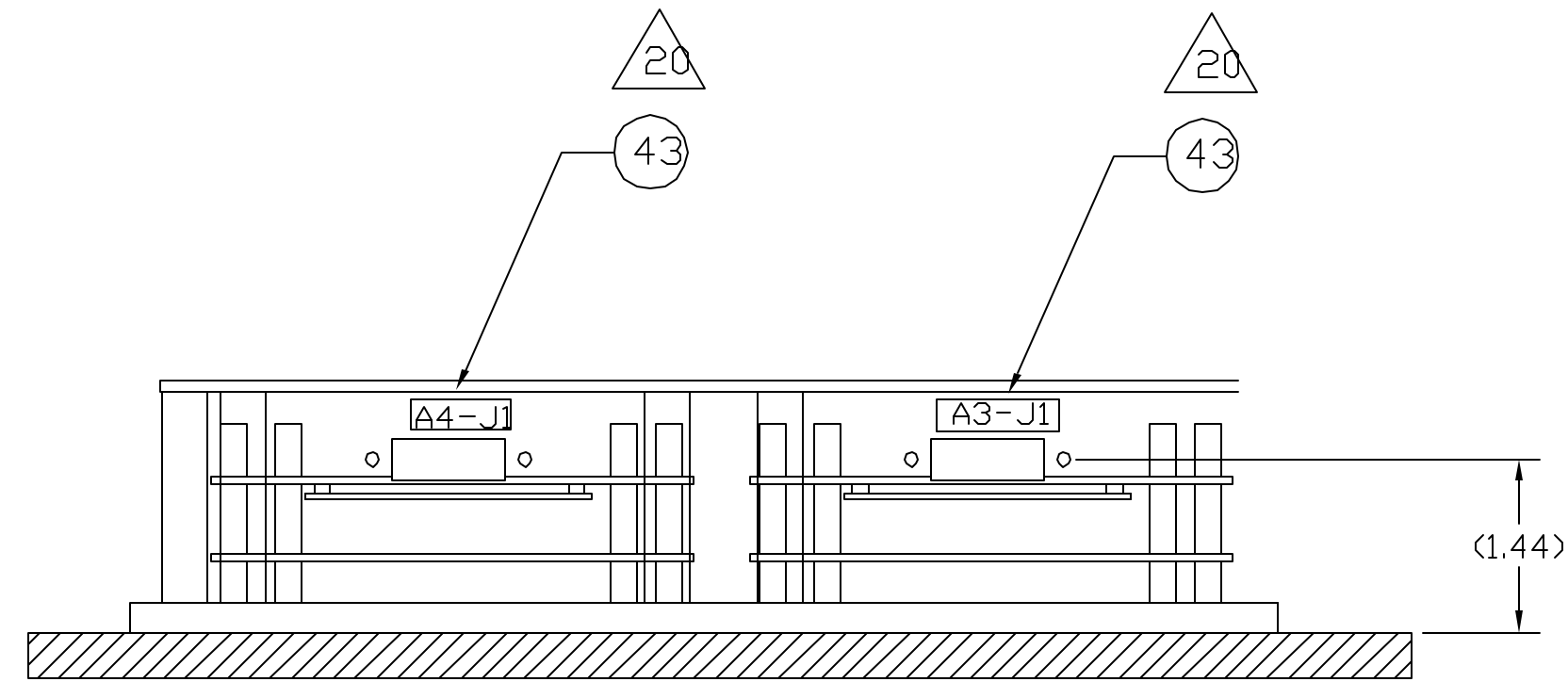
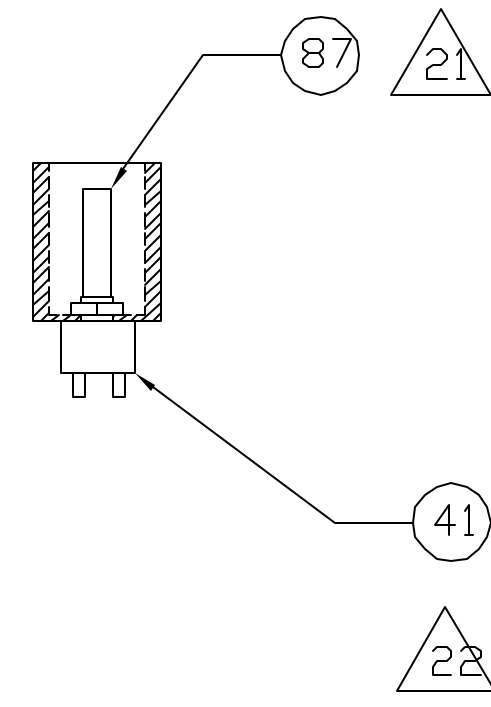


Massachusetts Institute of Technology  
Center for Space Research  
VOILA

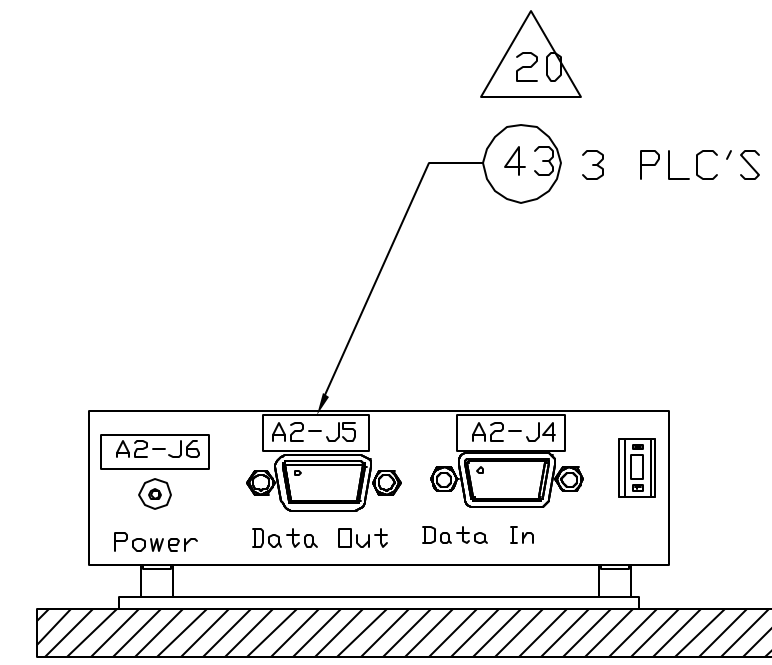
VOILA EE  
(ELECTRONICS ENCLOSURE)

SIZE D	FSCM NO. 80230	DWG NO. 85-30300	REV 01
SCALE 1:1		SHEET 2 OF 4	

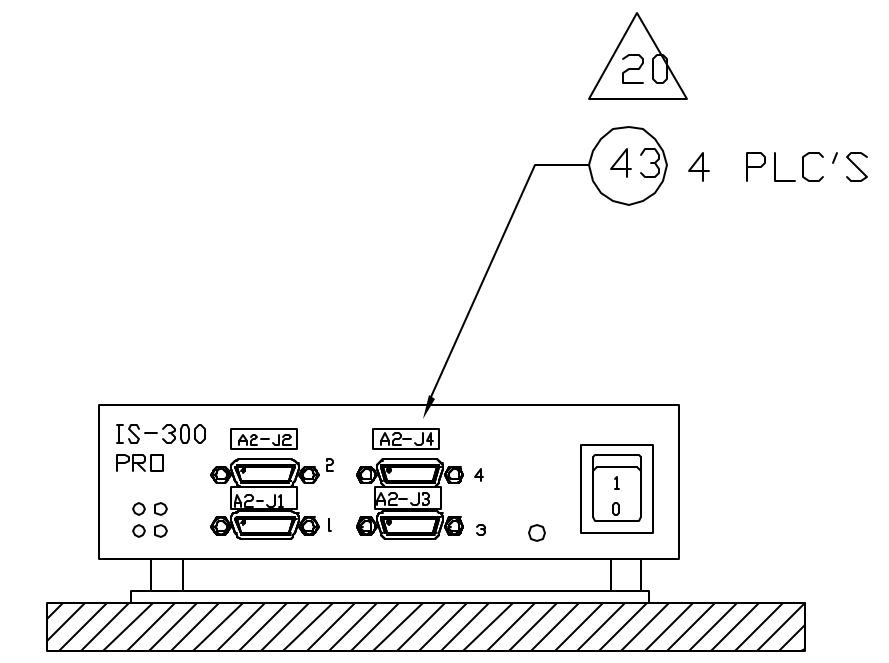
REVISIONS					
ECO	REV	DESCRIPTION	CHECKED	APPROVED	DATE
85-138	01	SEE SHEET 1			



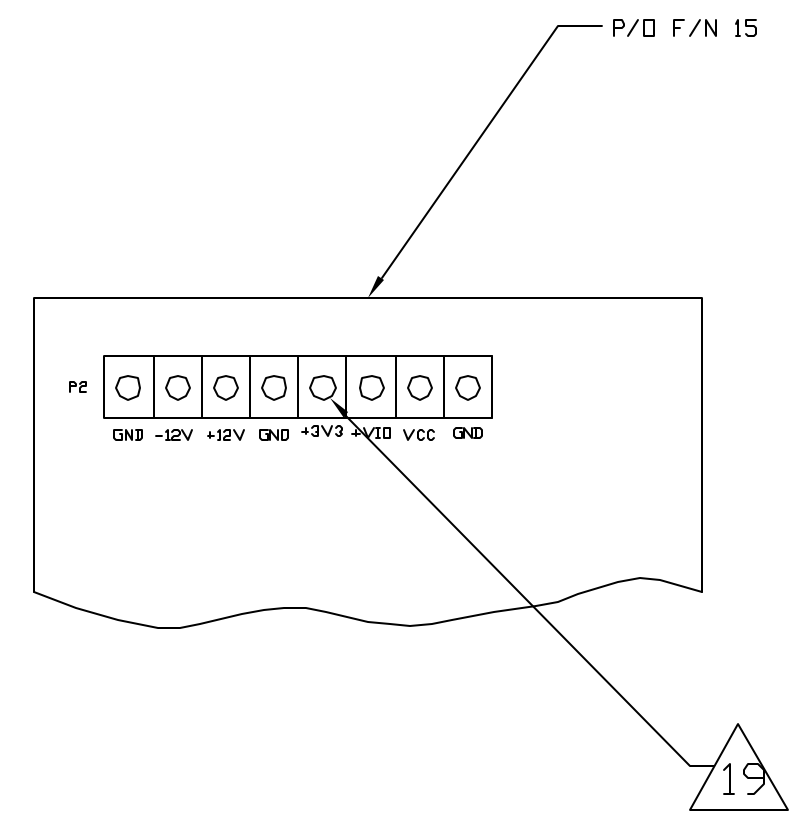
VIEW D-D  
ROTATED 180° CW



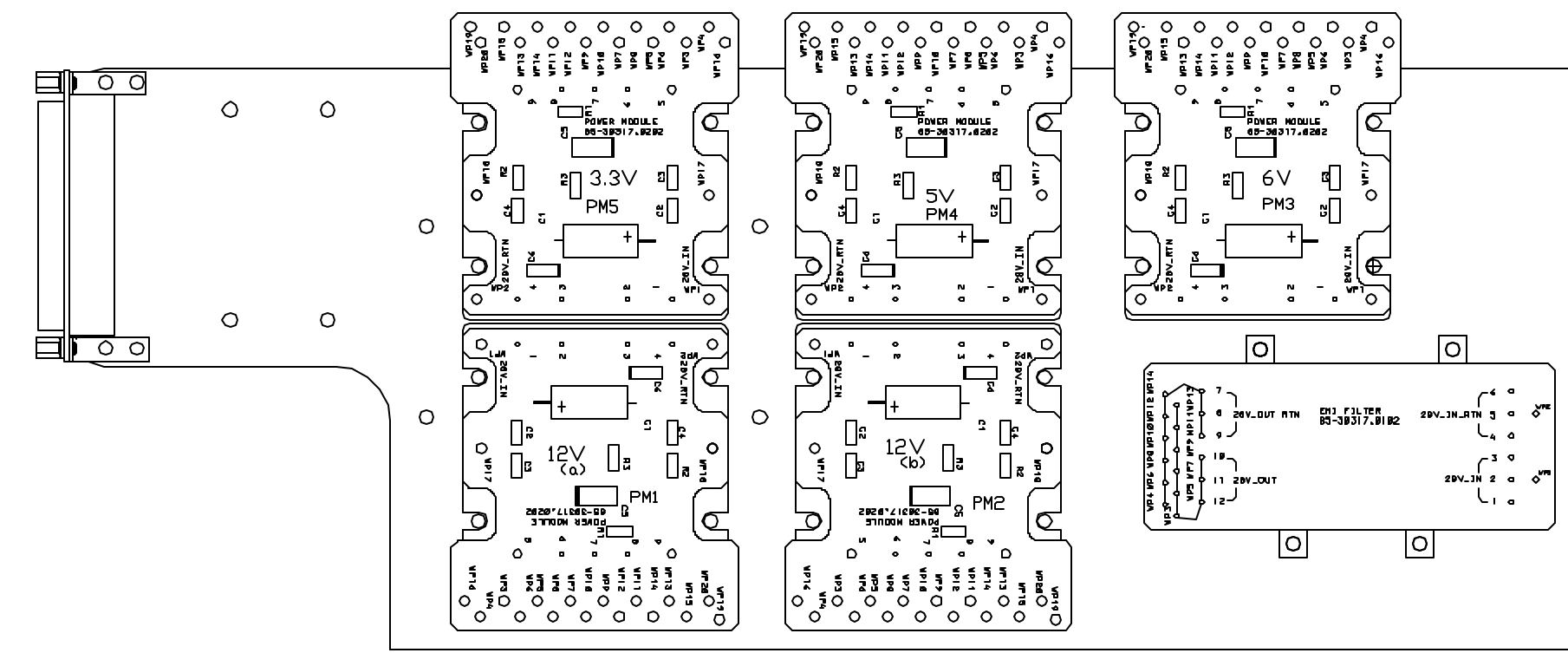
VIEW A-A  
ROTATED 180° CW



SECTION A-A



VIEW E-E



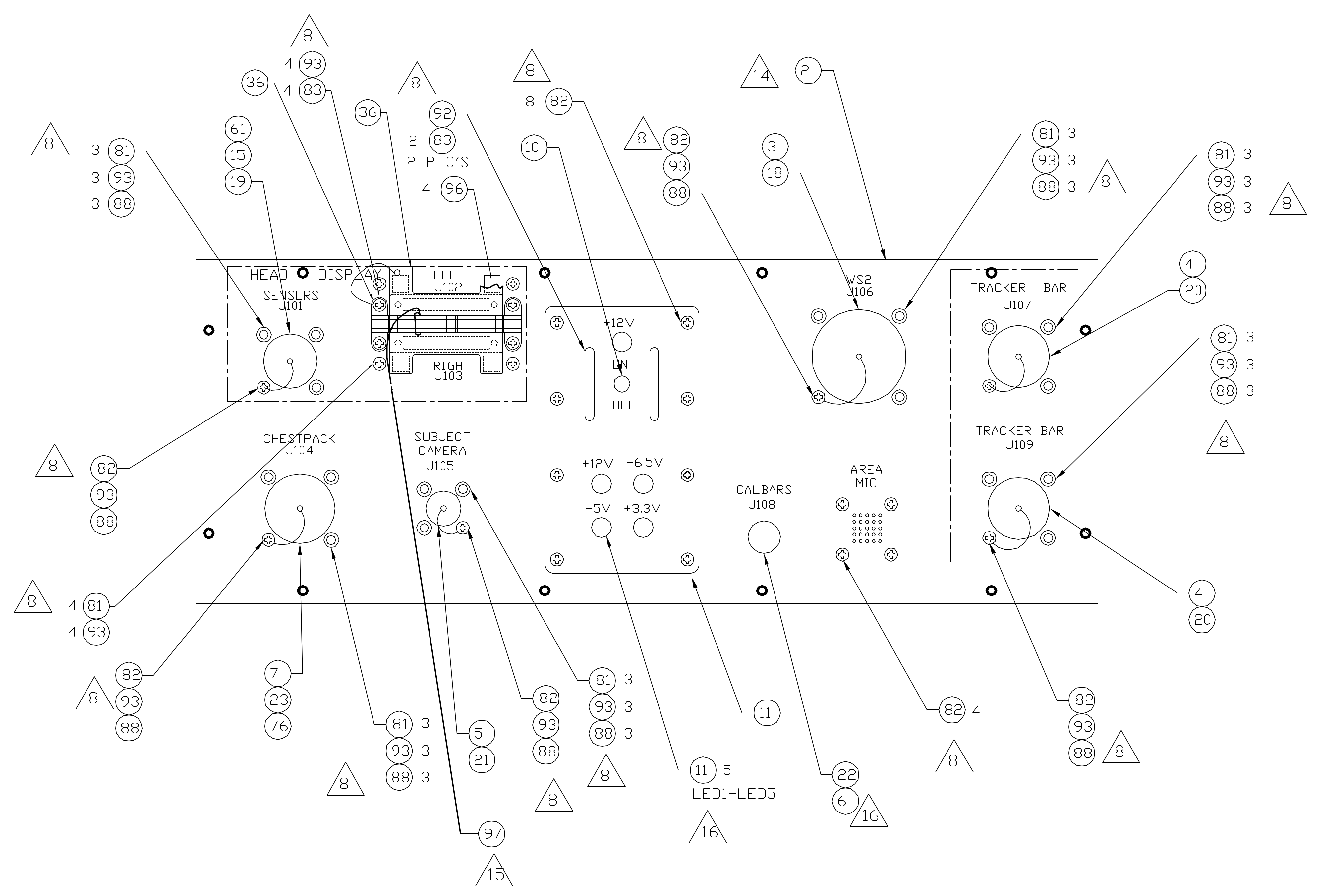
VIEW C-C  
ROTATED 180° CW

Massachusetts Institute of Technology  
Center for Space Research  
VOILA

VOILA EE  
(ELECTRONICS ENCLOSURE)

SIZE D	FSCM NO. 80230	DWG NO. 85-30300	REV 01
SCALE 1:1		SHEET 3 OF 4	

REVISIONS					
ECO	REV	DESCRIPTION	CHECKED	APPROVED	DATE
85-138	01	SEE SHEET 1			



Massachusetts Institute of Technology  
Center for Space Research  
VOILA

VOILA EE  
(ELECTRONICS ENCLOSURE)

SIZE D	FSCM NO. 80230	DWG NO. 85-30300	REV 01
SCALE 1:1		SHEET 4 of 4	