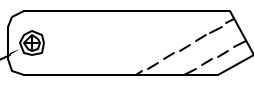
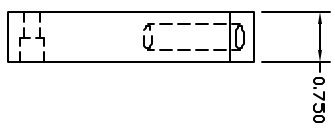
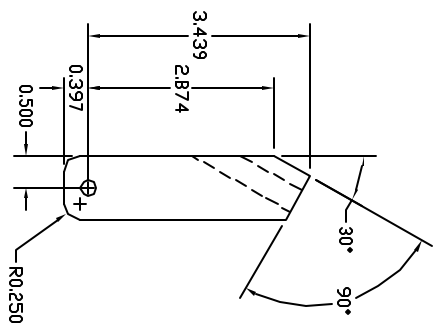
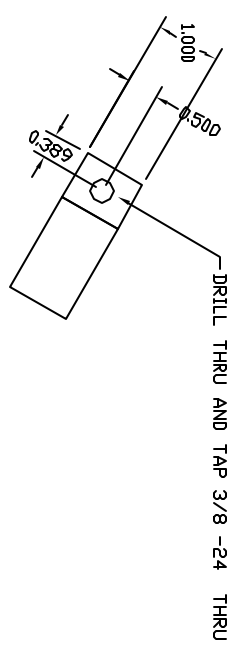


REVISING		DATE	APPROVED
REV	DESCRIPTION		
01	INITIAL RELEASE		



DRILL THRU AND TAP FOR 1/4-20 1SL INSERT C/BORE Ø .375 TBD DEEP

- NOTES:
1. ALL DIMENSIONS ARE IN INCHES.
  2. CLEANLINESS REQUIREMENTS PER SN-C-0005 LEVEL GC.
  3. PERMANENT INK STAMP PN IN .12 HIGH CHARACTERS WITH ITEM XXX LOCATE APPROXIMATELY WHERE SHOWN.
  4. CHEMFILM PER MIL-C5541, CLASS 3
  5. INSTALL INSERTS PER MS33537, REMOVE TANG.
  6. RADIUS ALL EDGES AND CORNERS .04-.06. FILLET RADIUS .02 MAX.

APPROVALS	
DESIGN	USED ON
TEST	
MANUFACTURE	
INSPECTION	

UNLESS OTHERWISE SPECIFIED DIMENSIONS ARE IN INCHES  
 TOLERANCE: ANGLES +/- .1  
 3 PLACE DECIMALS +/- .005  
 2 PLACE DECIMALS +/- .01

MATERIAL: AL 6061 T6

NOTE 4 FINISH

NAME	DATE
DESIGNED	
APPROVED	
RELEASED	

Massachusetts Institute of Technology  
 Center for Space Research  
 VADLA

BRACKET, TOP MOUNTING,  
 RIGHT SIDE  
 ENGINEERING UNIT

SIZE: 80230  
 DWG NO.: 85-25104  
 SHEET: 1 OF 1