

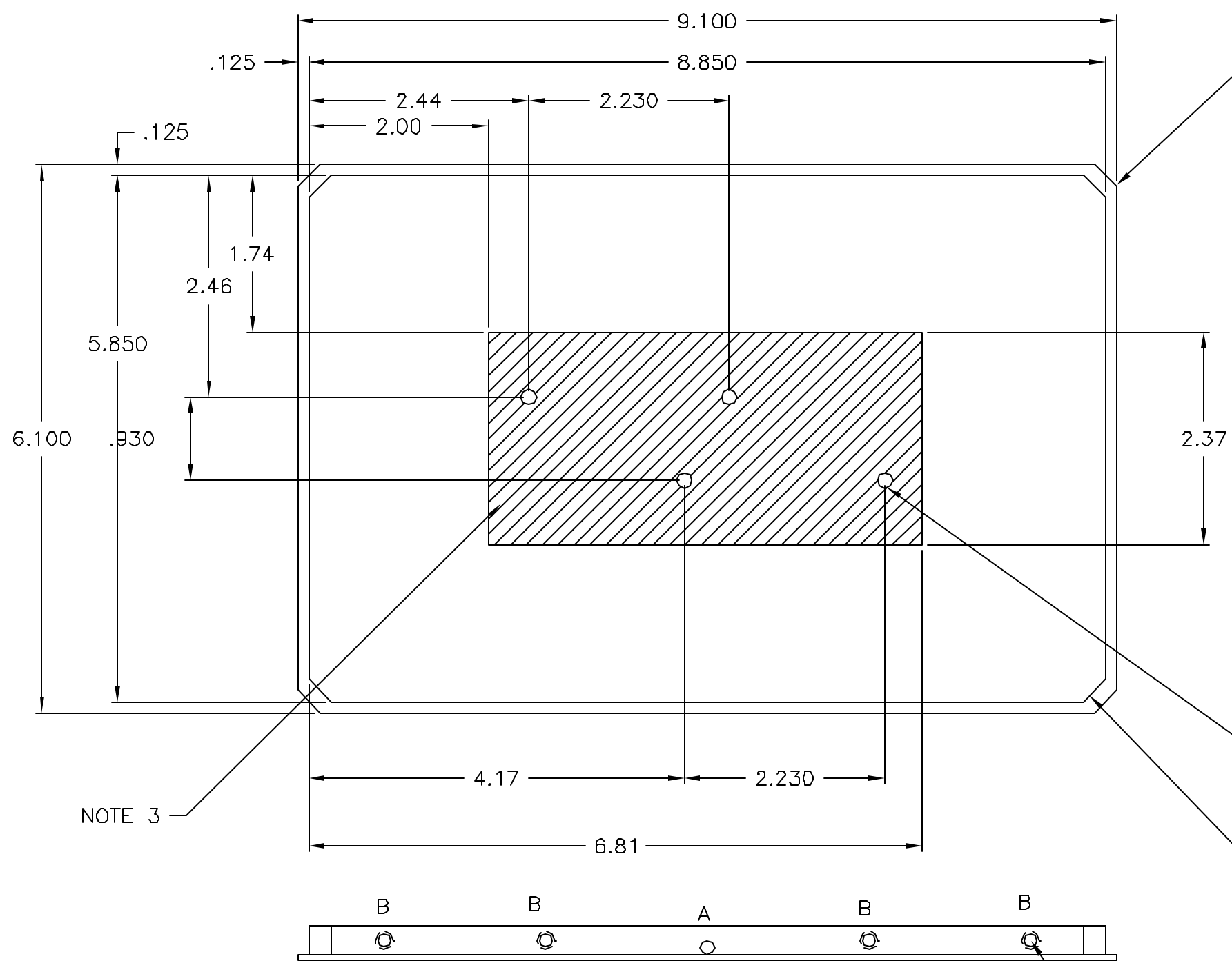
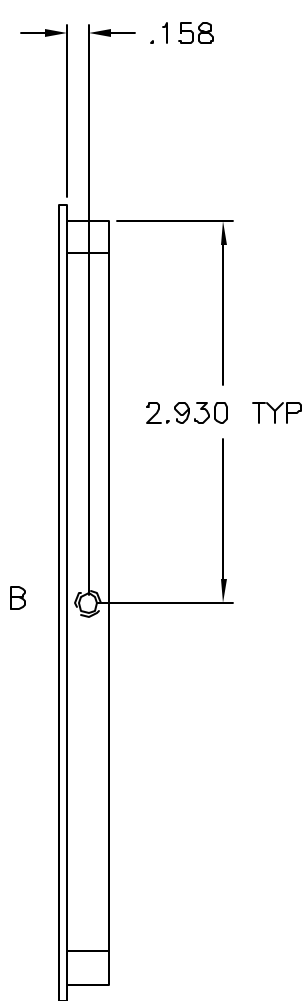
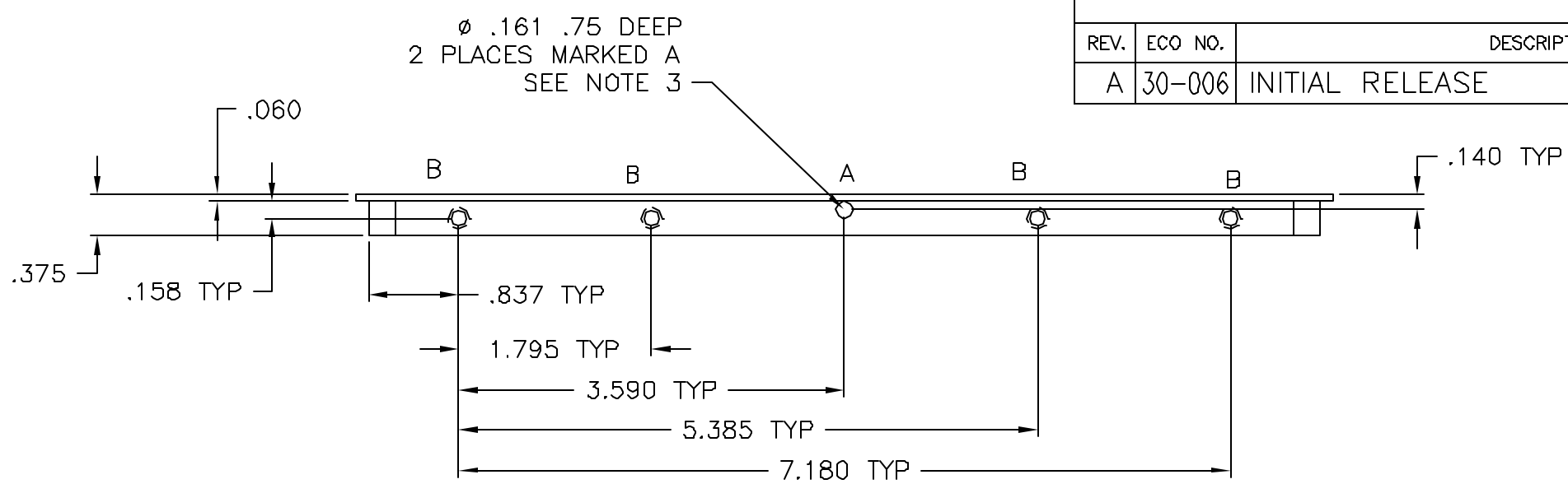
4

3

2

1

REVISIONS					
REV.	ECO NO.	DESCRIPTION	CHECKED	APPROVED	DATE
A	30-006	INITIAL RELEASE			



.25 x 45° CHAMFER
4 PLACES

DRILL ϕ .173, .30 DP, CSK 120° X ϕ .19
TAP FOR #8-32 UNC-2B X .164 LG HELICAL COIL INSERT
INSTALL F/N 1, BREAK TANG
2 PLACES

.31 x 45° CHAMFER
4 PLACES

DRILL ϕ .147, .50 DP, CSK 120° X ϕ .19
TAP FOR #6-32 UNC-2B X .138 LG HELICAL COIL INSERT
INSTALL F/N 2, BREAK TANG
10 PLACES MARKED B

NOTES:

1. MATERIAL: ALUMINUM ALLOY 6061-T6.
2. REMOVE ALL BURRS AND SHARP EDGES R.010 MAXIMUM.
3. PRIOR TO INSTALLATION OF ITEMS 2 AND 3, MASK ALL HOLES AND AREA SHOWN. HARD ANODIZE PER MIL-SPEC MIL-A-8625C TYPE 111, CLASS 1, .002 THICK. DO NOT SEAL.

NAME		DATE	
DRAWN			
CHECKED			
APPROVED			
RELEASED			
WEIGHT			

UNLESS OTHERWISE SPECIFIED:
DIMENSIONS SHALL BE INTERPRETED IAW ANSI Y14.5 - 1982
DIMENSIONS ARE IN INCHES
TOLERANCE: ANGLES $\pm 1^\circ$
3 PLACE DECIMALS $\pm .005$
2 PLACE DECIMALS $\pm .01$
THIRD ANGLE PROJECTION

MASSACHUSETTS INSTITUTE OF TECHNOLOGY
CENTER FOR SPACE RESEARCH
CAMBRIDGE, MA 02139

BASE PLATE, CCD SHIPPING ASSEMBLY, ASTRO E2

SIZE	CAGE CODE	DWG. NO.	REV.
C	80230	30-50114.18	A

SCALE 1:1 SHEET 1 OF 1

4

3

2

1