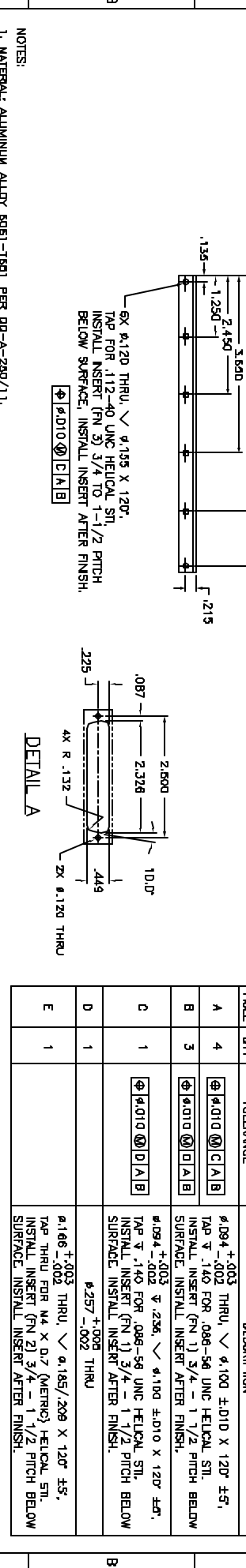
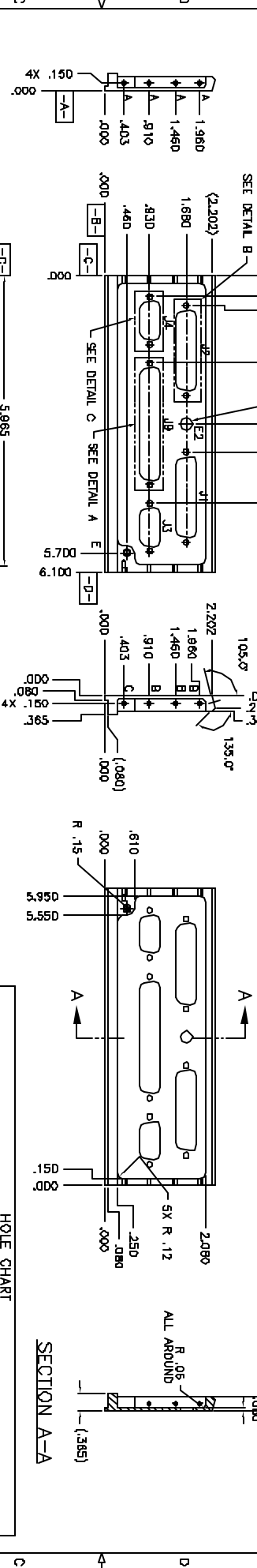
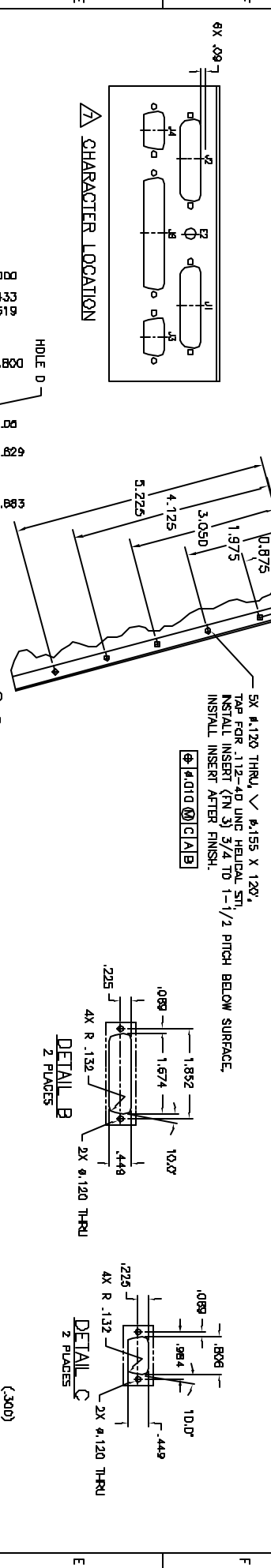


REV	DATE	DESCRIPTION	DESIGNED	DRAWN	CHECKED
A	3-1-82	NATURAL FINISH FROM 21-2006001-001			



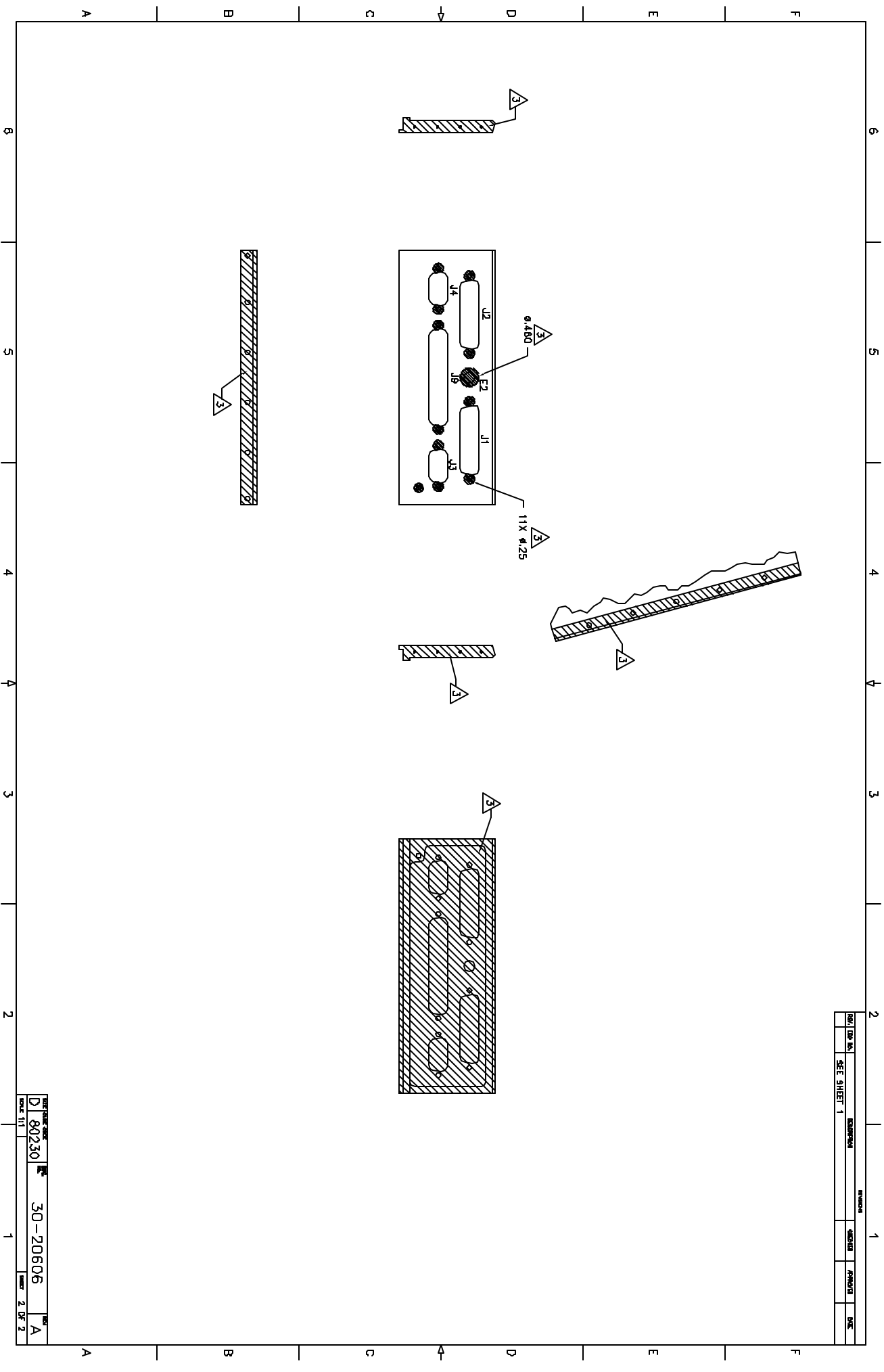
HOLE	QTY	TOLERANCE	DESCRIPTION
A	4	Ⓢ .010 Ⓢ C/A/B	Ⓢ.094 +.003 THRU, √ Ⓢ.100 ±.010 X 1.20' ±.5', TAP √ .140 FOR .086-56 UNC HELICAL STL, INSTALL INSERT (FN 1) 3/4 - 1 1/2 PITCH BELOW SURFACE, INSTALL INSERT AFTER FINISH.
B	3	Ⓢ .010 Ⓢ C/A/B	Ⓢ.094 +.003 √ .256, √ Ⓢ.100 ±.010 X 1.20' ±.5', TAP √ .140 FOR .086-56 UNC HELICAL STL, INSTALL INSERT (FN 1) 3/4 - 1 1/2 PITCH BELOW SURFACE, INSTALL INSERT AFTER FINISH.
C	1	Ⓢ .010 Ⓢ D/A/B	Ⓢ.166 +.003 THRU, √ Ⓢ.185 / .209 X 1.20' ±.5', TAP THRU FOR M4 X D.7 (METRIC) HELICAL STL, INSTALL INSERT (FN 2) 3/4 - 1 1/2 PITCH BELOW SURFACE, INSTALL INSERT AFTER FINISH.
D	1	Ⓢ.257 ±.002 THRU	
E	1		

UNLESS OTHERWISE SPECIFIED:
 DIMENSIONS SHALL BE IN INCHES
 DIMENSIONS ARE IN INCHES
 TOLERANCES UNLESS OTHERWISE SPECIFIED:
 FRACTIONS ±.010
 DECIMALS ±.005
 HOLE POSITION ±.010
 HOLE ANGLE 90°

MASSACHUSETTS INSTITUTE OF TECHNOLOGY
 CENTER FOR ADVANCED MANUFACTURING
 30-20606
 ENDPLATE, RIGHT

- NOTES:
1. MATERIAL: ALUMINUM ALLOY 6061-T601 PER QQ-A-290/11.
 2. FINISH: CHEMICAL FILM ALL OVER PER MIL-C-5541, CLASS 3.
 3. MASK PART AS SHOWN. FRAME AND PAINT REMAINING SURFACES USING AERODIGLIZE 9924 (PRIMER) AND AERODIGLIZE Z306 BLACK (PAINT).
 4. MASK THESE SURFACES BEFORE PRIMING AND PAINTING.
 5. REMOVE ALL BURRS AND SHARP EDGES R.010 MAXIMUM BEFORE FINISHING.
 6. UNTOLERANCED DIMENSIONS LOCATING TRUE POSITION ARE BASIC.
 7. ENGRAVE .12 HIGH GOTHIC CHARACTERS AS SHOWN

REV	DATE	BY	CHKD	DESCRIPTION
1				30-20806
SHEET SHEET 1				
NO.	DATE	BY	CHKD	DESCRIPTION
1				30-20806



REV	DATE	BY	CHKD	DESCRIPTION
1				30-20806
SHEET SHEET 1				
NO.	DATE	BY	CHKD	DESCRIPTION
1				30-20806