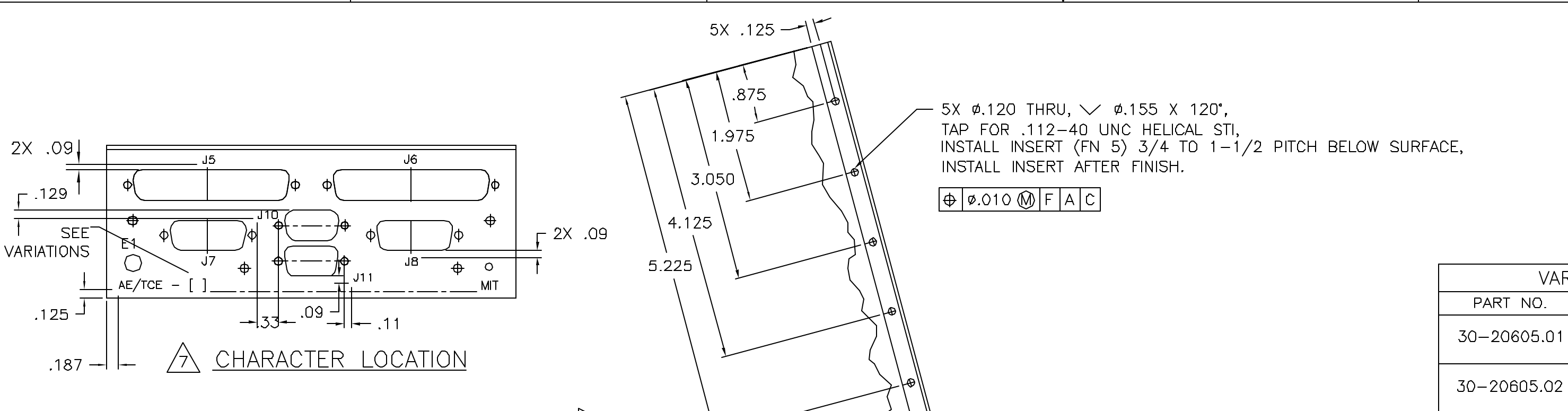
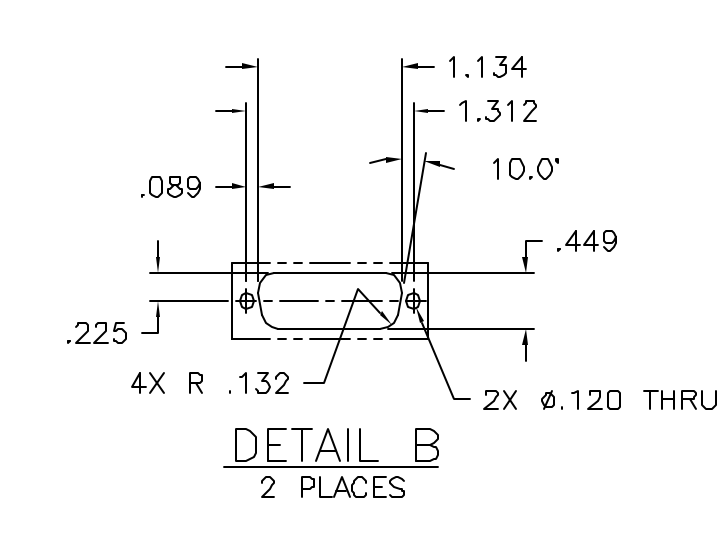
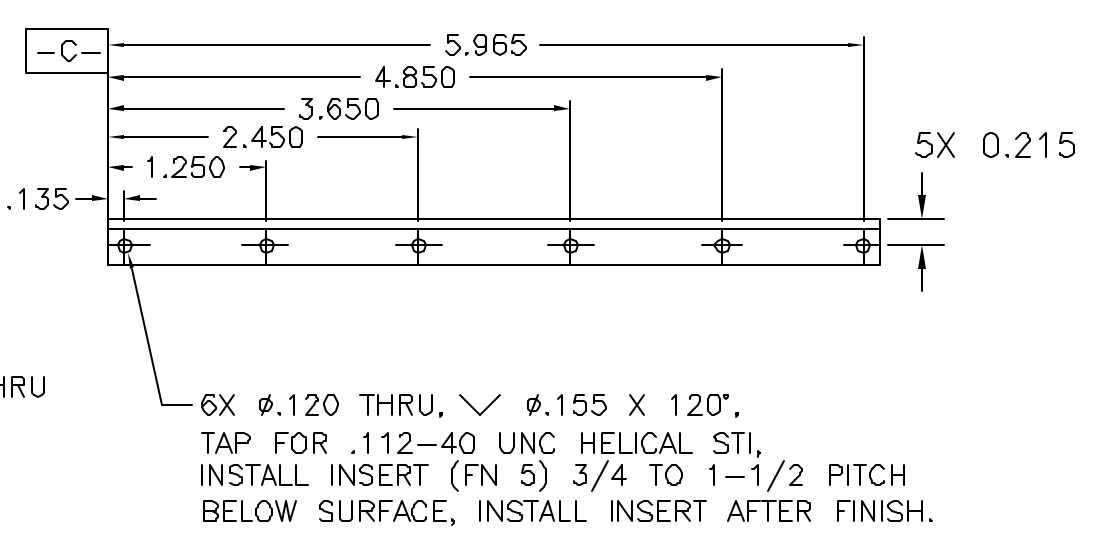
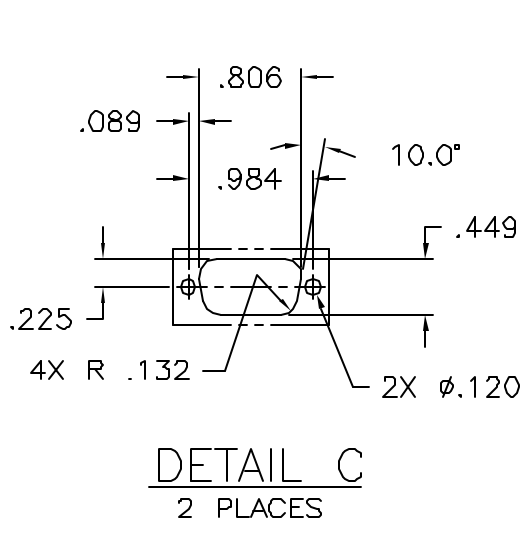
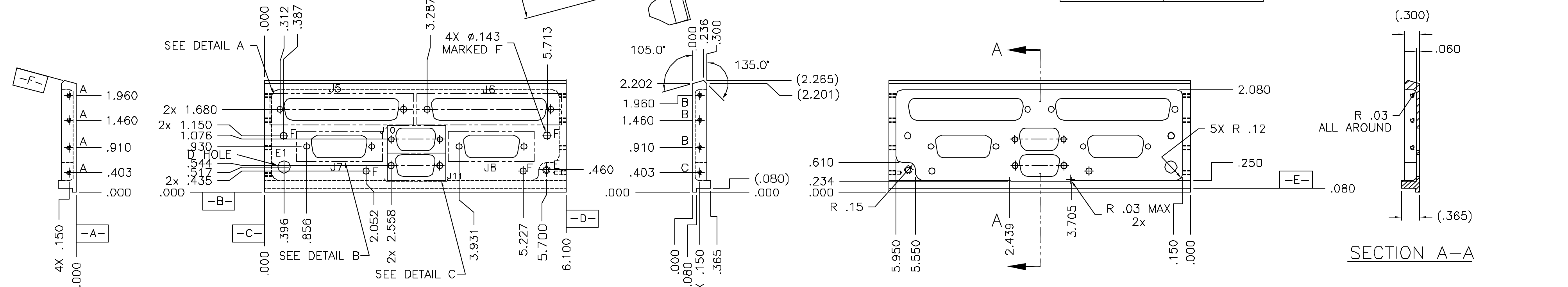


REV.		REVISIONS		
ECD NO.	DESCRIPTION	CHECKED	APPROVED	DATE
A 30-002	INITIAL RELEASE (FROM 29-20605 r_C)	EAB	RF	5/22/02
B 30-007	ADD J9 and J10			

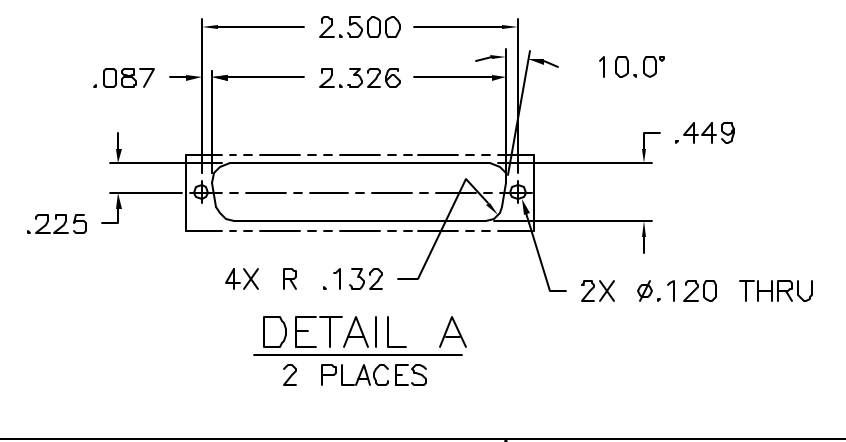


VARIATIONS	
PART NO.	ENGRAVING
30-20605.01	AE/TCE - 01
30-20605.02	AE/TCE - 23



HOLE CHART			
HOLE	QTY	TOLERANCE	DESCRIPTION
A	4	$\varnothing .010 \text{ M C A B}$	$\varnothing .094^{+.003}_{-.002}$ THRU, $\vee \varnothing .100 \pm .010 \times 120^\circ \pm 5'$ , TAP $\vee .140$ FOR $.086-56$ UNC HELICAL STI. INSTALL INSERT (FN 3) $3/4 - 1 1/2$ PITCH BELOW SURFACE. INSTALL INSERT AFTER FINISH.
B	3	$\varnothing .010 \text{ M D A B}$	
C	1	$\varnothing .010 \text{ M D A B}$	$\varnothing .094^{+.003}_{-.002}$ $\vee .236$ , $\vee \varnothing .100 \pm .010 \times 120^\circ \pm 5'$ , TAP $\vee .140$ FOR $.086-56$ UNC HELICAL STI. INSTALL INSERT (FN 3) $3/4 - 1 1/2$ PITCH BELOW SURFACE. INSTALL INSERT AFTER FINISH.
D	1		$\varnothing .257^{+.005}_{-.002}$ THRU
E	1		$\varnothing .166^{+.003}_{-.002}$ THRU, $\vee \varnothing .185/.209 \times 120^\circ \pm 5'$ , TAP THRU FOR M4 X 0.7 (METRIC) HELICAL STI. INSTALL INSERT (FN 4) $3/4 - 1 1/2$ PITCH BELOW SURFACE. INSTALL INSERT AFTER FINISH.

- NOTES:
- MATERIAL: ALUMINUM ALLOY 6061-T651 PER QQ-A-250/11.
  - FINISH: CHEMICAL FILM ALL OVER PER MIL-C-5541, CLASS 3. MASK PART AS SHOWN. PRIME AND PAINT REMAINING SURFACES USING AEROGLAZE 9924 (PRIMER) AND AEROGLAZE Z306, BLACK (PAINT).
  - MASK THESE SURFACES BEFORE PRIMING AND PAINTING.
  - REMOVE ALL BURRS AND SHARP EDGES R.010 MAXIMUM BEFORE FINISHING.
  - UNTOLERANCED DIMENSIONS LOCATING TRUE POSITION ARE BASIC.
  - HANDLE IN ACCORDANCE WITH 30-01303.
  - ENGRAVE, .12 HIGH GOTHIC CHARACTERS AS SHOWN.



NAME	DATE
DRAWN M. SMITH	4-12-02
CHECKED M. SMITH	4-19-02
APPROVED R. FOSTER	4-21-02
RELEASED D. GAGE	4-31-02
WEIGHT	

UNLESS OTHERWISE SPECIFIED:  
 DIMENSIONS SHALL BE INTERPRETED IAW ANSI Y14.5 - 1982  
 DIMENSIONS ARE IN INCHES  
 TOLERANCE: ANGLES  $\pm 1'$   
 3 PLACE DECIMALS  $\pm .005$   
 2 PLACE DECIMALS  $\pm .01$   
 THIRD ANGLE PROJECTION

MASSACHUSETTS INSTITUTE OF TECHNOLOGY  
 CENTER FOR SPACE RESEARCH  
 CAMBRIDGE, MA 02139

ENDPLATE, LEFT

SIZE: 80230 D  
 DWG. NO.: 30-20605  
 REV. B

SCALE: 1:1  
 SHEET: 1 OF 2

6

5

4

↓

3

2

1

			REVISIONS		
REV.	ECD NO.	DESCRIPTION	CHECKED	APPROVED	DATE
		SEE SHEET 1			

F

F

E

E

D

D

C

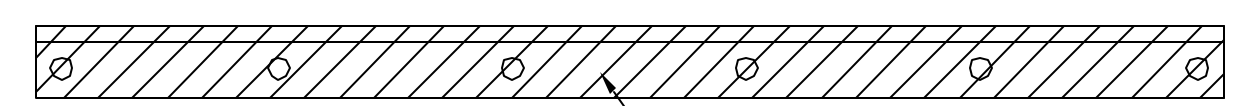
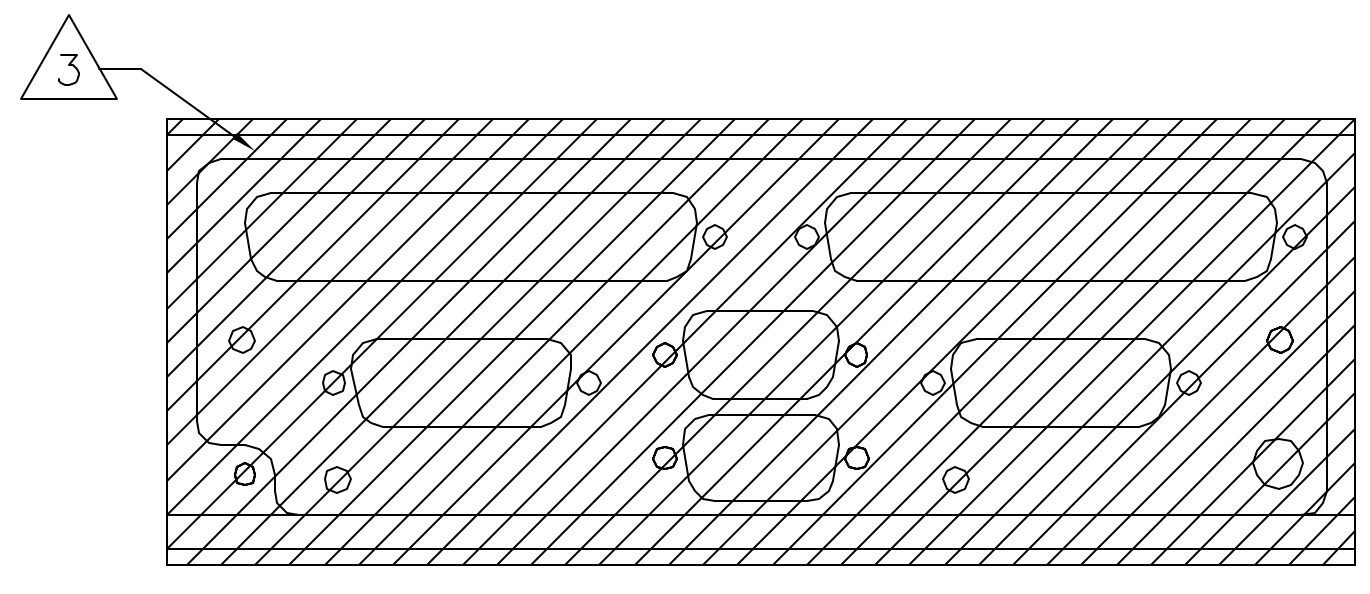
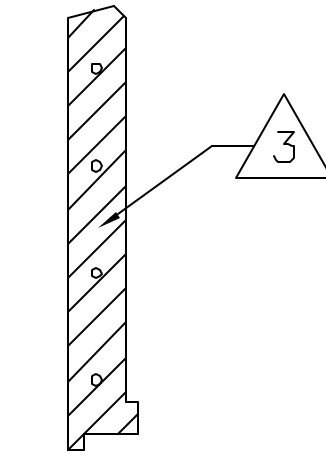
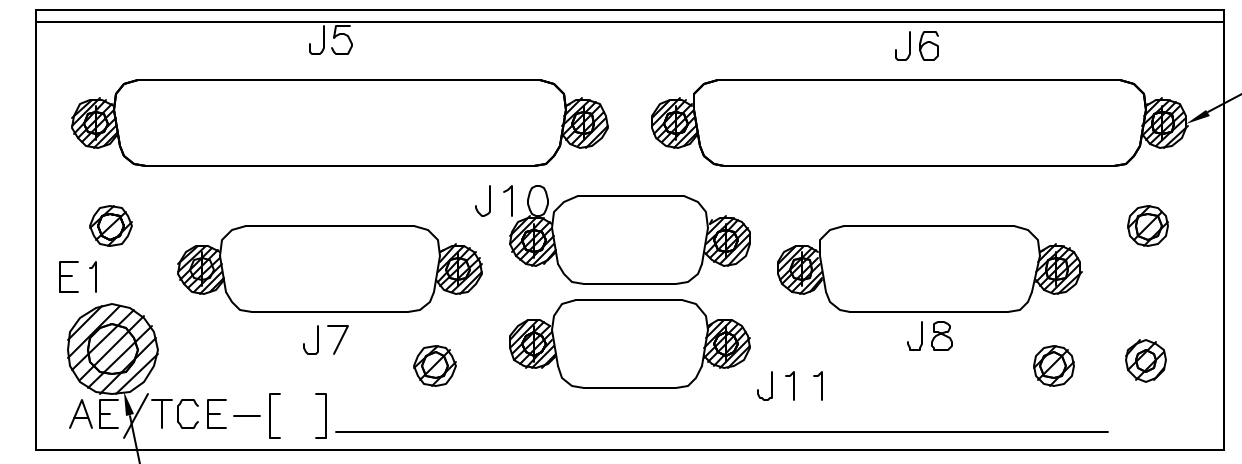
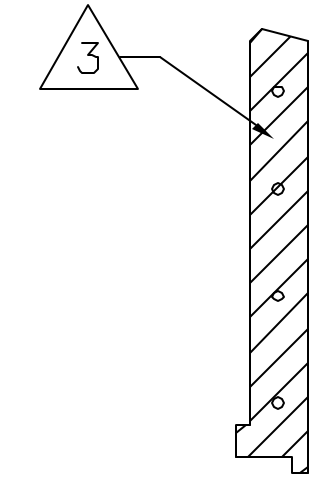
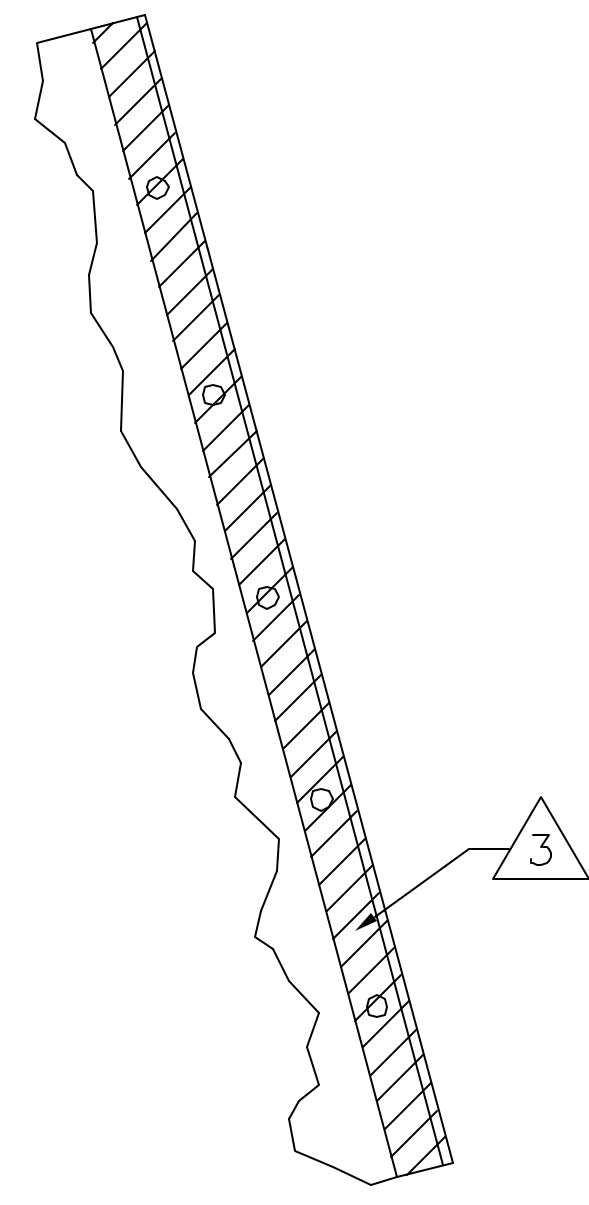
C

B

B

A

A



6

5

4

↑

3

2

1

SIZE	CAGE CODE	DWG. NO.	REV.
D	80230	30-20605	B
SCALE 1:1		SHEET 2 OF 2	