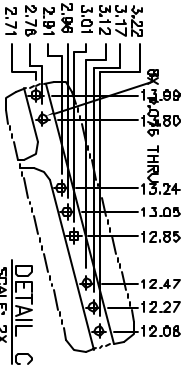
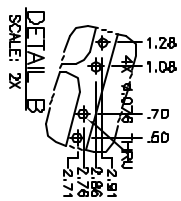
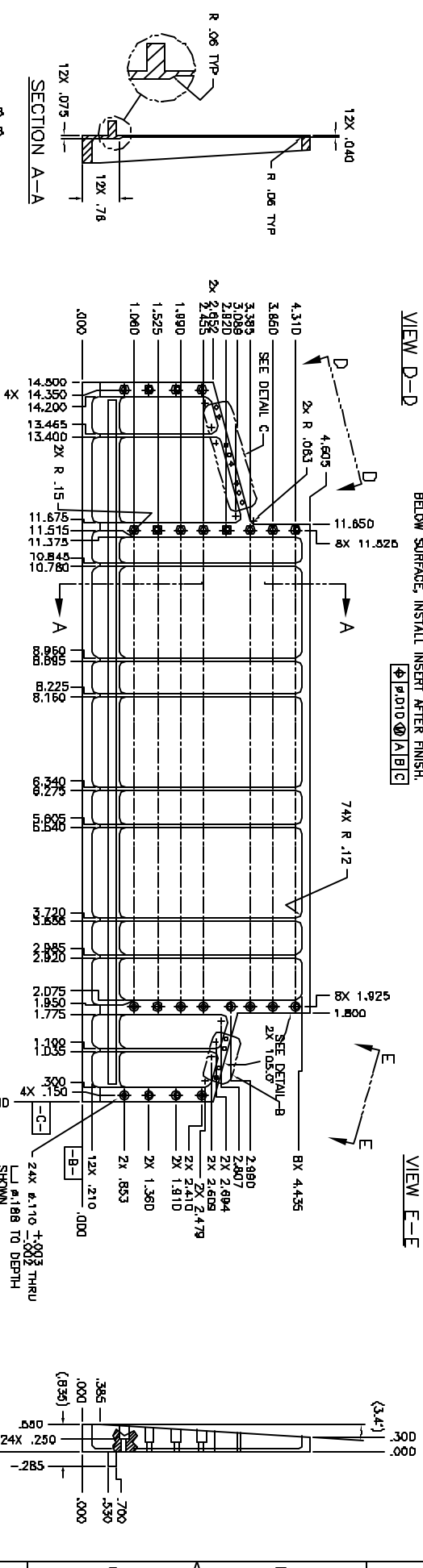
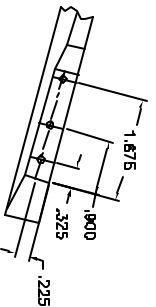
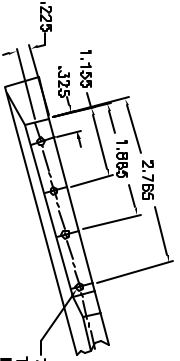
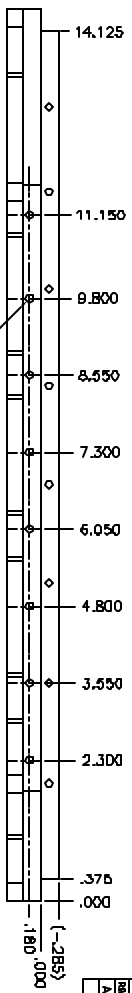


REV	DATE	DESCRIPTION	DESIGNED	CHECKED	DATE
A	11-22-02	INITIAL RELEASE FROM 3D-CAD/GEN 3D			



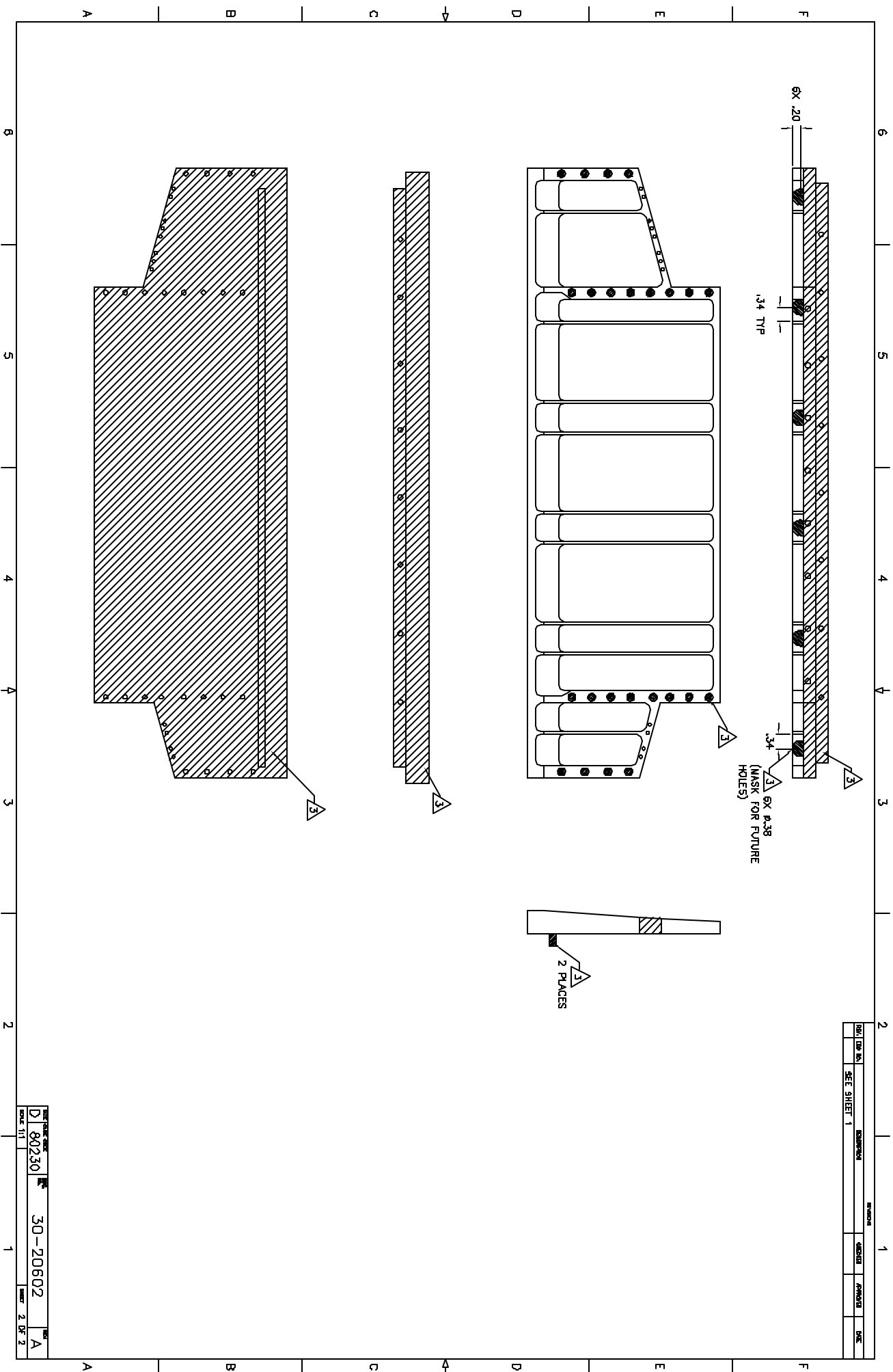
- NOTES:
1. MATERIAL: ALUMINUM ALLOY 8081-T6S1 PER QQ-A-250/11.
 2. FINISH: CHEMICAL FILM ALL OVER PER ML-C-5541, CLASS 3.
 3. MARK PART AS SHOWN, PRIME AND PAINT REMAINING SURFACES USING AEROGLAZE 9924 (PRIMER) AND AEROGLAZE Z30E, BLACK (PAINT).
 4. MASK THESE SURFACES BEFORE PRIMING AND PAINTING.
 5. REMOVE ALL BURRS AND SHARP EDGES R/D10 MAXIMUM BEFORE FINISHING.
 6. UNTOLERANCED DIMENSIONS LOCATING TRLE POSITION ARE BASIC.

NAME	DATE	REV
ML SMITH	11-22-02	
REVISION		
REVISION		
REVISION		
REVISION		

UNLESS OTHERWISE SPECIFIED:
 DIMENSIONS IN INCHES
 DIMENSIONS ARE IN INCHES
 TOLERANCES UNLESS NOTED
 1. PLACE DIMENSIONS ±.01
 THIRD ANGLE PREDILECTION

MASBACHUBERTS INSTITUTE OF TECHNOLOGY
 30-20802
 SIDE PANEL, RIGHT

DATE 11/11/02
 REV 1 OF 2



REV	DATE	BY	CHKD	DESCRIPTION
D	8/22/30			SEE SHEET 1

REV	DATE	BY	CHKD	DESCRIPTION
D	8/22/30			30-20602
REV	DATE	BY	CHKD	DESCRIPTION
A	2/27/2			