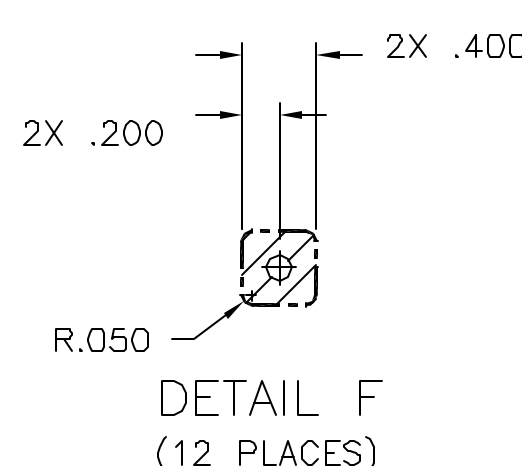
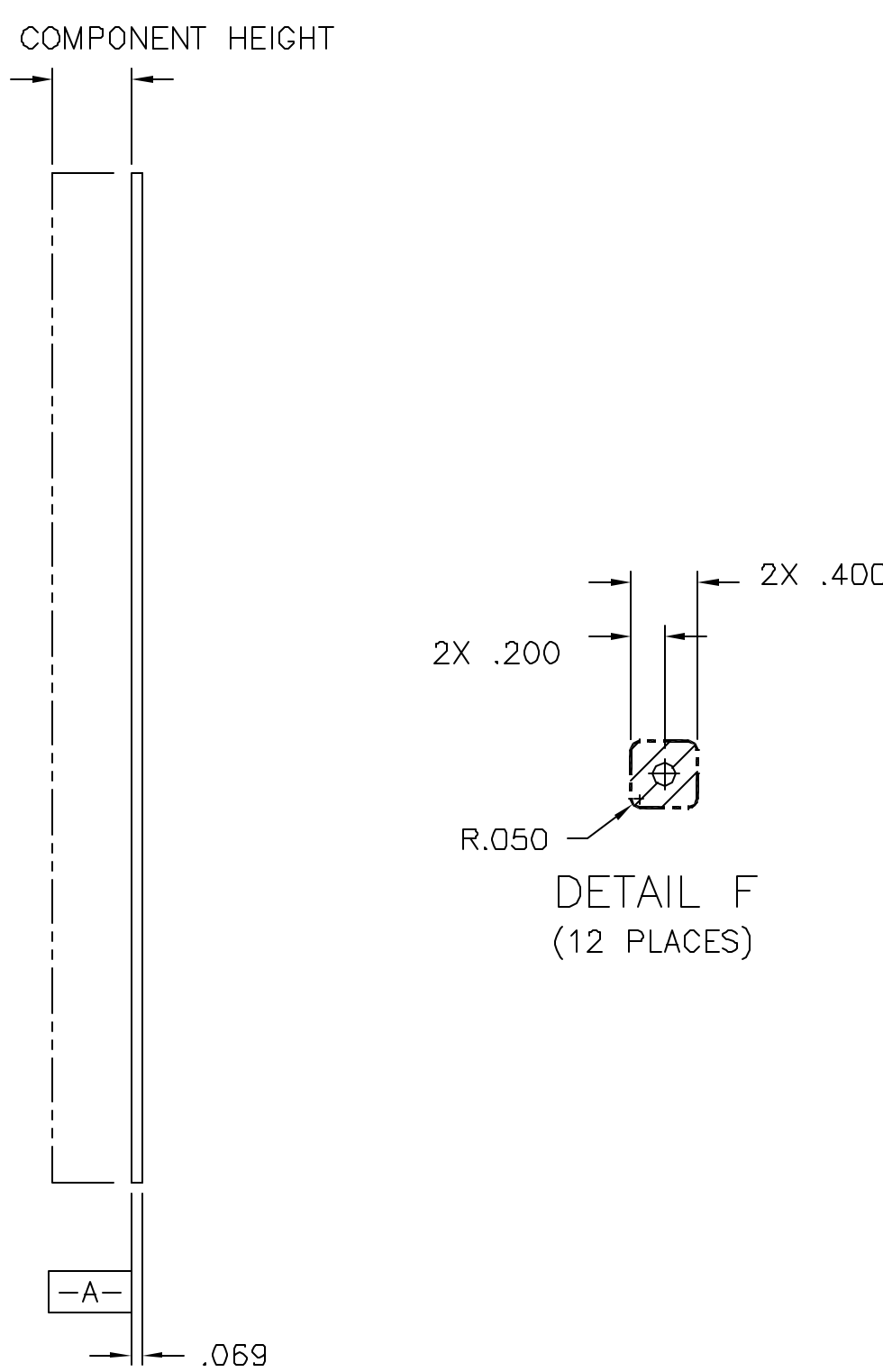
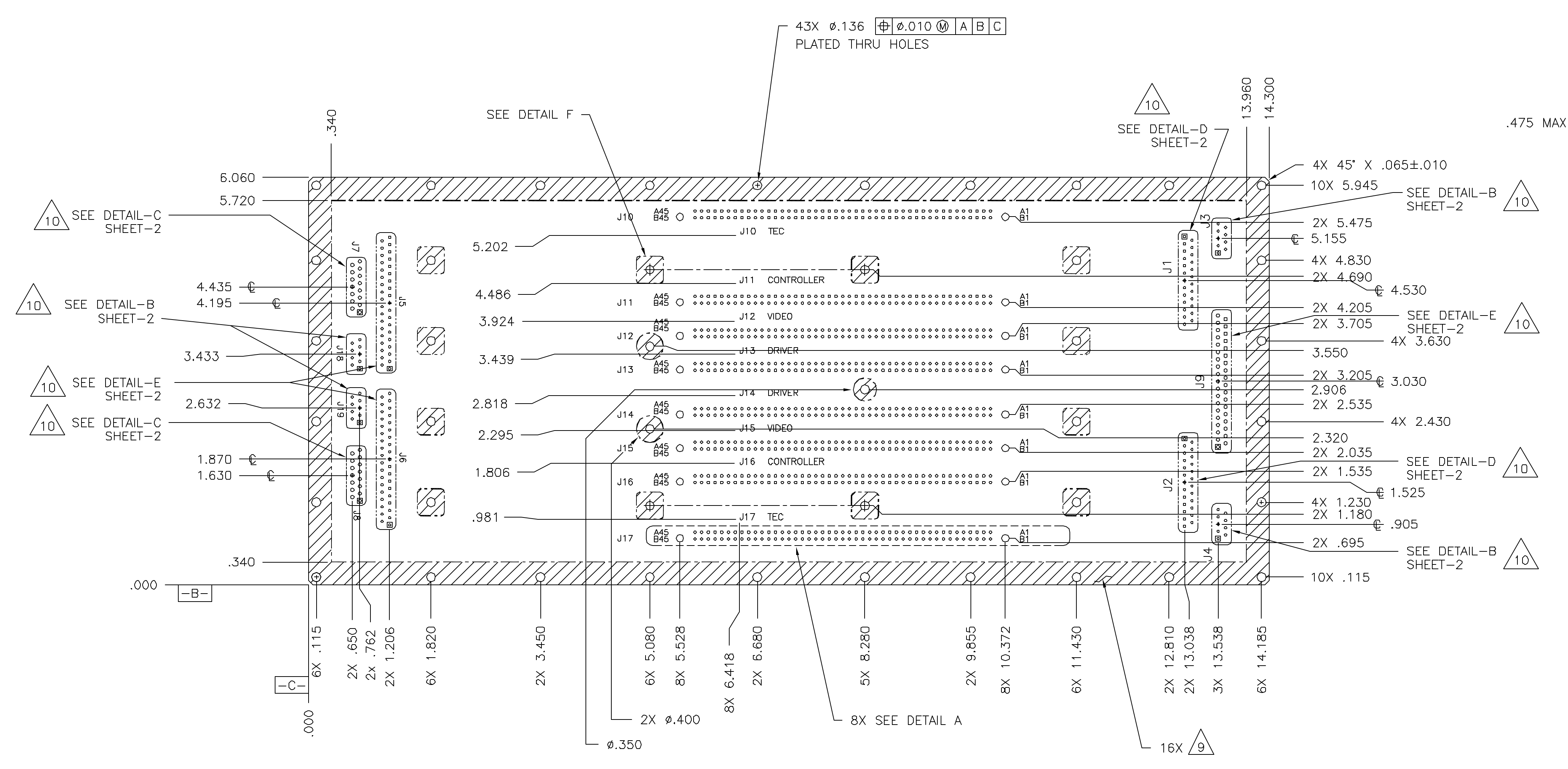
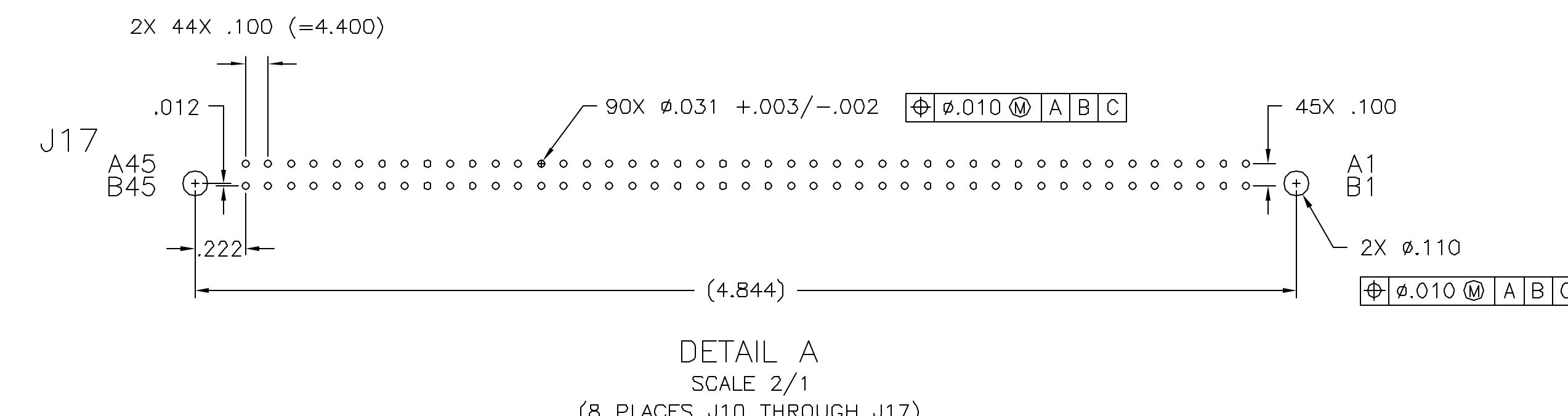
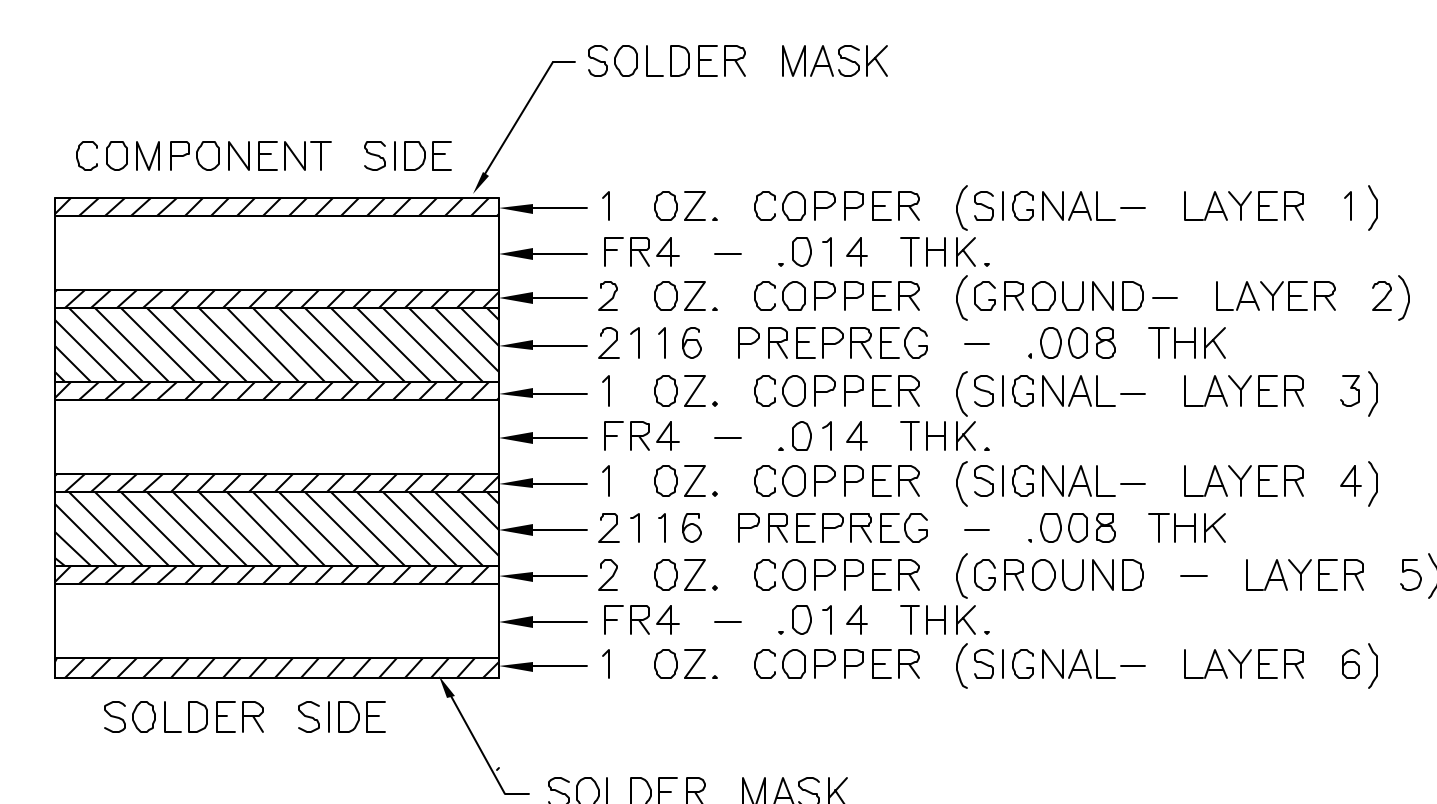


| REVISIONS | | | | | |
|-----------|-----|-----------------|---------|----------|------|
| ECO | REV | DESCRIPTION | CHECKED | APPROVED | DATE |
| 30-032 | A | INITIAL RELEASE | | | |



- NOTES:
- BOARD SHOWN FROM CONNECTOR SIDE.
 - UNTOLERANCED DIMENSIONS LOCATING TRUE POSITION ARE BASIC.
 - HOLE SIZES ARE AFTER PLATING.
 - PRINTED WIRING BOARD PART NUMBER IS 30-20101.
 - DESIGN AND FABRICATION SHALL BE IAW 29-00103.
 - SOLDER MASK MUST BE APPLIED OVER BARE COPPER, EXCEPT AS NOTED.
 - MARKING SHALL INCLUDE AS A MINIMUM:

| MARKING | OBTAINED FROM |
|----------------------------|------------------|
| MANUFACTURER'S NAME | PWB MANUFACTURER |
| MANUFACTURER'S PART NUMBER | PWB MANUFACTURER |
| PWB PART NUMBER | 30-20101 |
| PWB NAME | AE/TCE BACKPLANE |
| ASSEMBLY PART NUMBER | 30-20100 |
| CONNECTOR DESIGNATION | THIS DRAWING |
| CONNECTOR PIN DESIGNATION | THIS DRAWING |



- HATCHED AREAS TO BE BARE COPPER (NO SOLDER MASK, NO TIN PLATE), BOTH SIDES OF BOARD. NO COMPONENTS OR INTERNAL TRACES IN HATCHED AREAS.
- PIN 1 DESIGNATED BY
- ALL PLATED THRU HOLES TO BE FREE OF SOLDER MASK.

LAYER ASSIGNMENTS

| | | | | | |
|--|----------|----------------|---------|--|----------------|
| UNLESS OTHERWISE SPECIFIED DIMENSIONS ARE IN INCHES TOLERANCE: ANGLES +/- 1° 3 PLACE DECIMALS +/- .005 2 PLACE DECIMALS +/- .01 | | NAME | DATE | Massachusetts Institute of Technology Center for Space Research ASTRO-E2 | |
| 30-20101 | ASTRO-E2 | DRAWN M. SMITH | 1/10/03 | OUTLINE, BACKPLANE | |
| NEXT ASSEMBLY | USED ON | CHECKED | | | |
| APPLICATION | | APPROVED | | SIZE D | FSCM NO. 80230 |
| | | RELEASED | | DWG NO. 30-20101.01 | REV A |
| | | | | SCALE 1:1 | SHEET 1 OF 2 |

8

7

6

5

↓

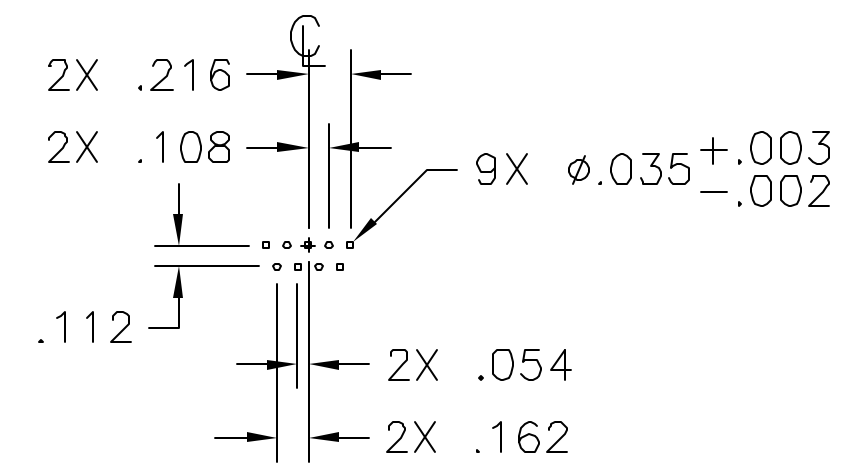
4

3

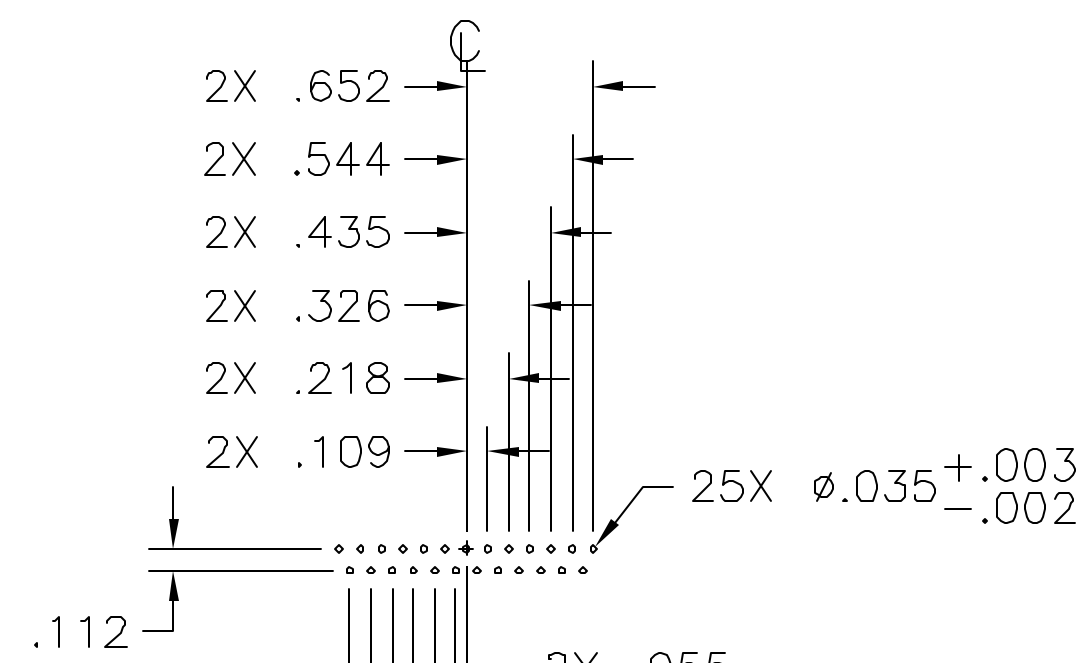
2

1

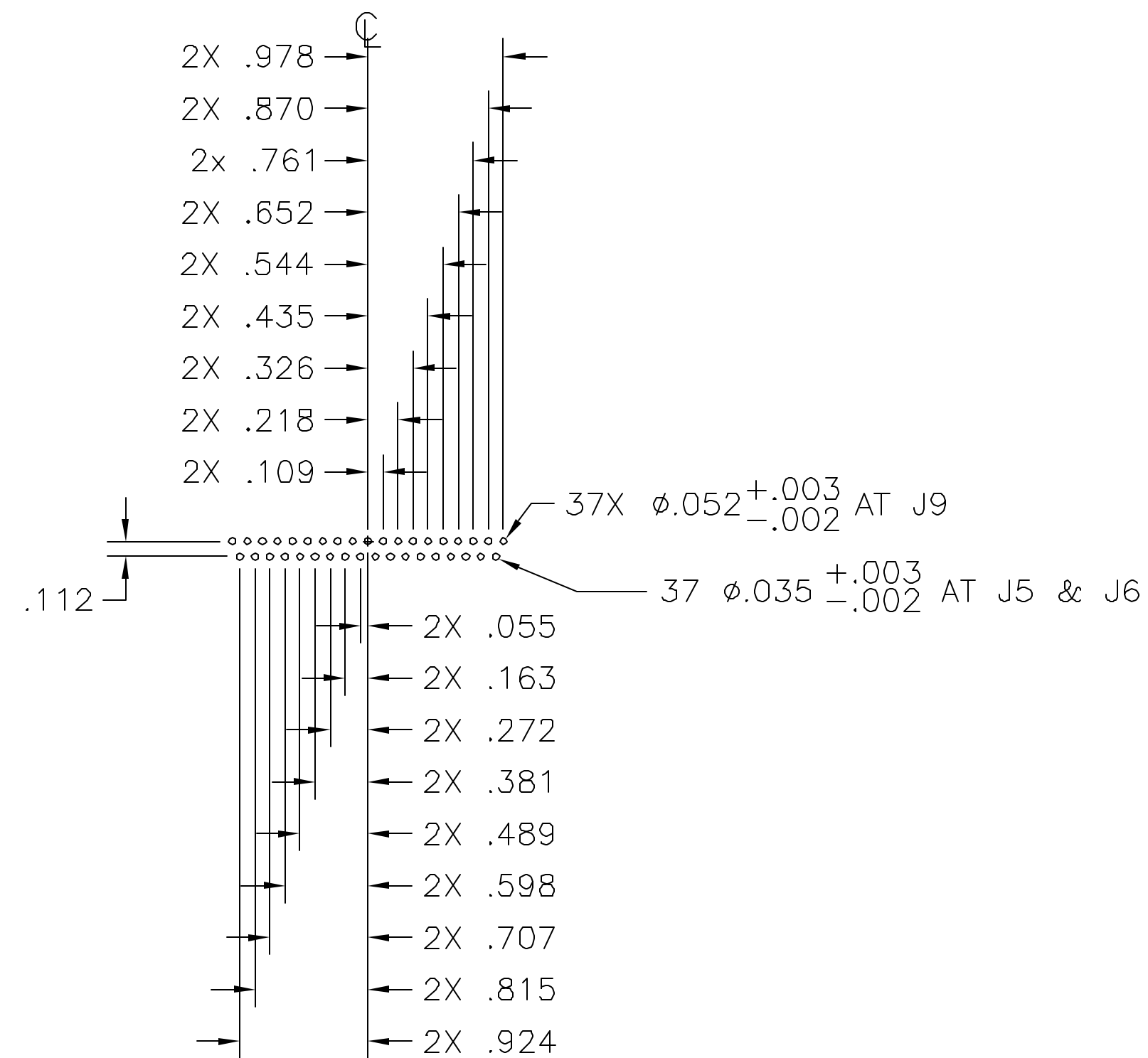
| REVISIONS | | | |
|-----------|---------|-------------|----------|
| REV. | ECO NO. | DESCRIPTION | DATE |
| | | SEE SHEET 1 | |
| | | CHECKED | APPROVED |
| | | | |



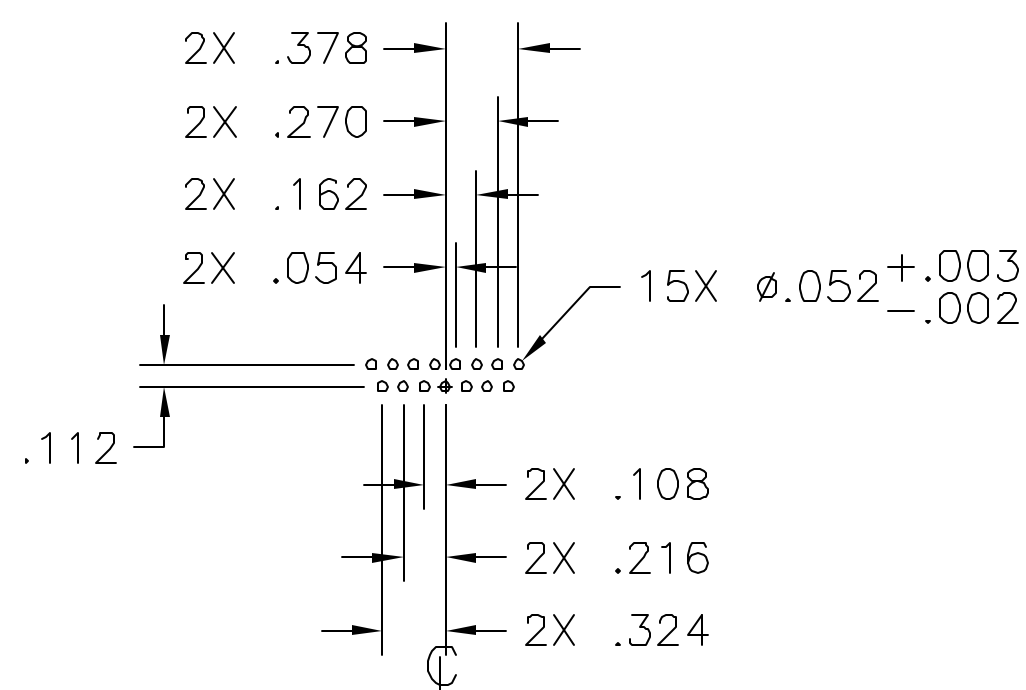
DETAIL-B
(4 PLACES AT J3,J4,J18,J19)



DETAIL-D
(2 PLACES AT J1 & J2)



DETAIL-E
(3 PLACES J5, J6 & J9)



DETAIL-C
(2 PLACES AT J7 & J8)

UNLESS OTHERWISE SPECIFIED:

DIMENSIONS SHALL BE INTERPRETED IAW ANSI Y14.5 - 1982

DIMENSIONS ARE IN INCHES
TOLERANCE: ANGLES $\pm 1^\circ$
3 PLACE DECIMALS $\pm .005$
2 PLACE DECIMALS $\pm .01$

THIRD ANGLE PROJECTION



MASSACHUSETTS INSTITUTE OF TECHNOLOGY
CENTER FOR SPACE RESEARCH
CAMBRIDGE, MA 02139

OUTLINE,
BACKPLANE

| NAME | DATE |
|----------------|----------------|
| DRAWN M. SMITH | 1/29/02 |
| CHECKED | |
| APPROVED | |
| RELEASED | |
| WEIGHT | NOT DETERMINED |

| | | | |
|------------|-----------|-------------|--------------|
| SIZE | CAGE CODE | DWG. NO. | REV. |
| D | 80230 | 30-20101.01 | A |
| SCALE FULL | | | SHEET 2 OF 2 |

8

7

6

5

↑

4

3

2

1