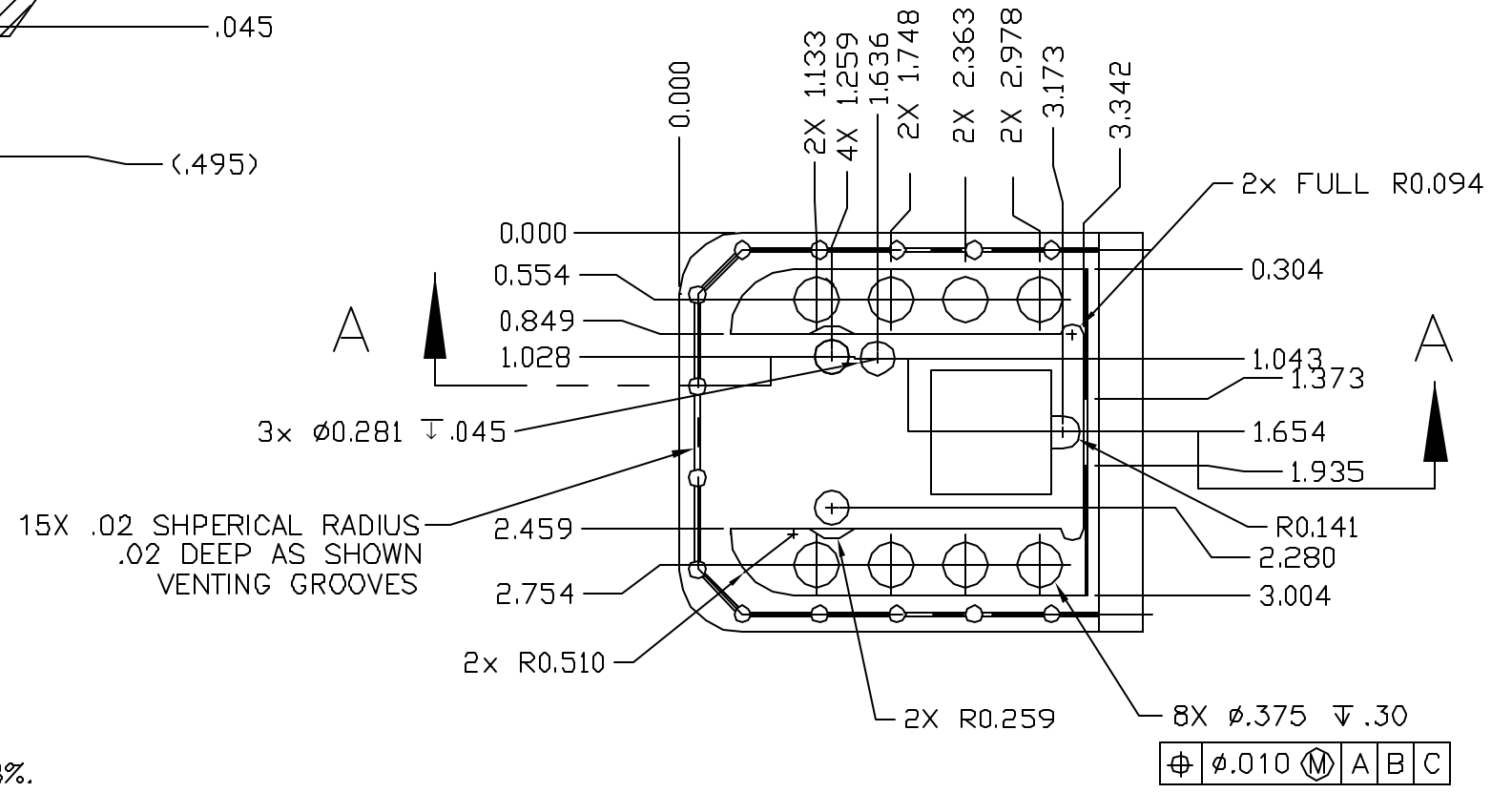
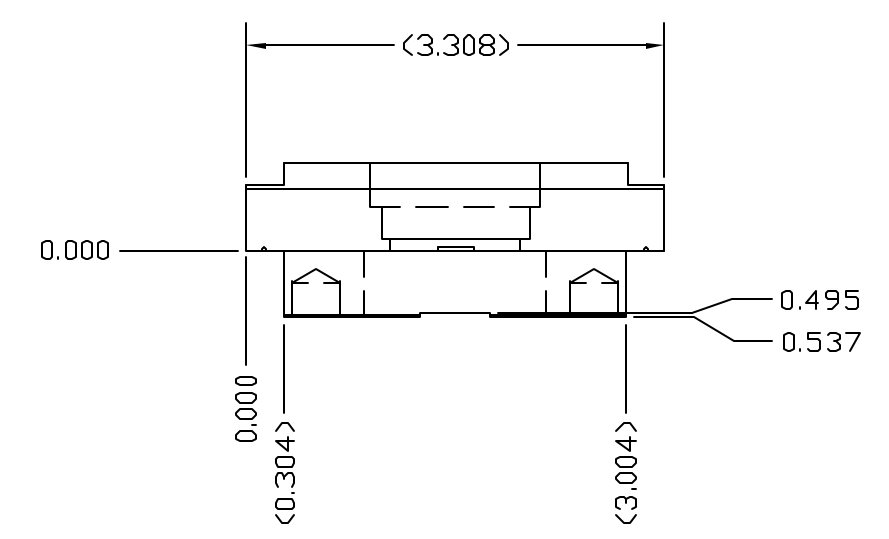
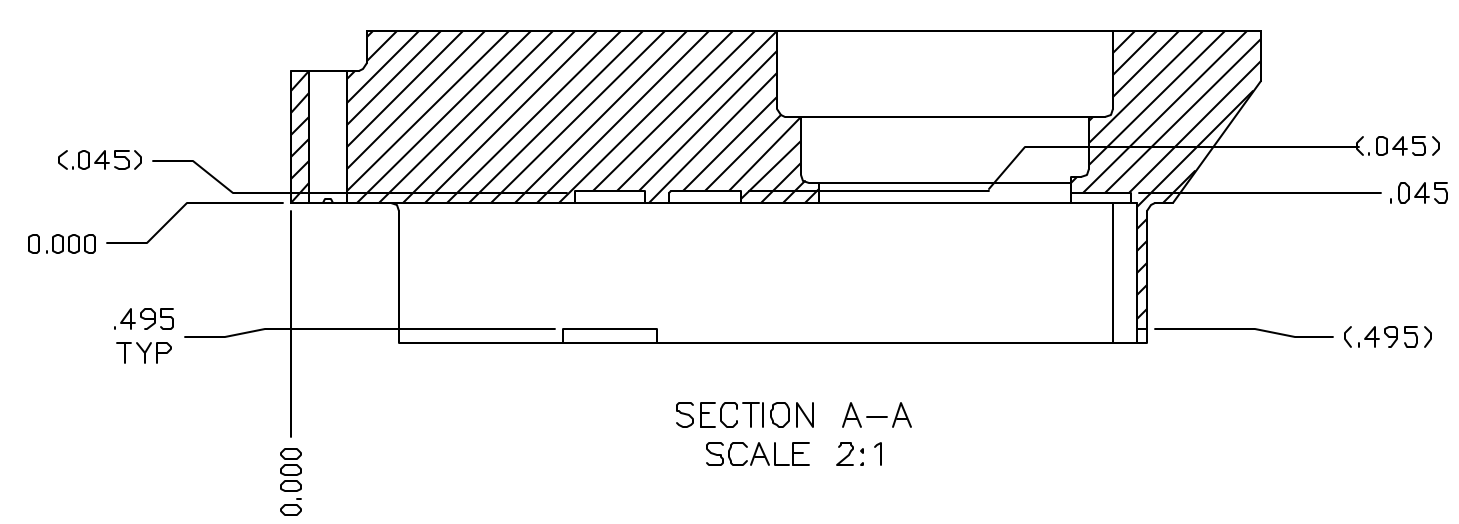
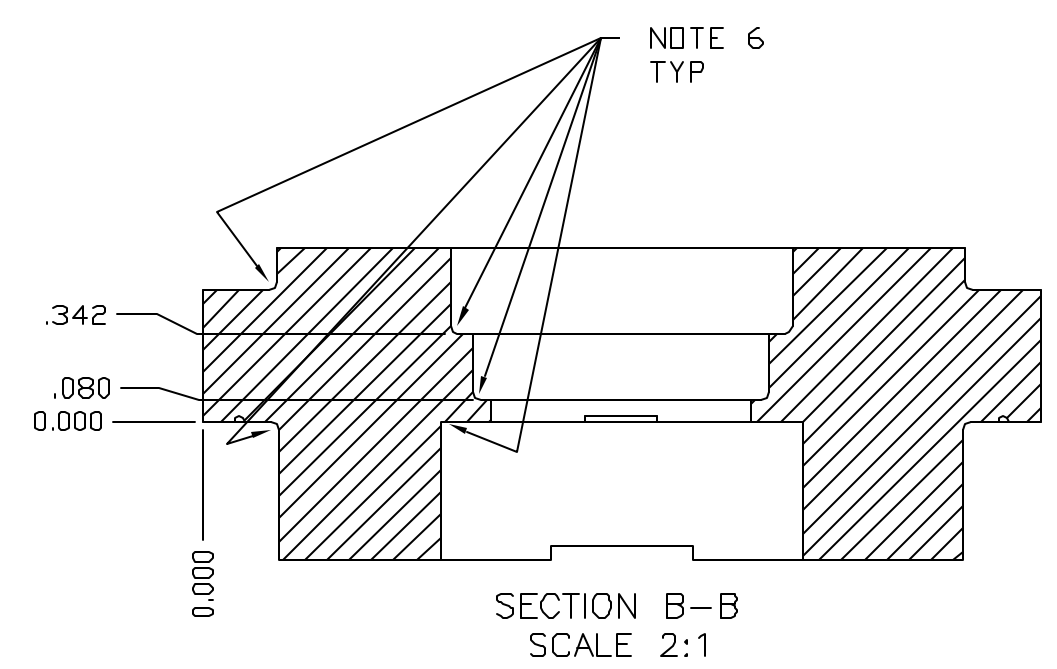
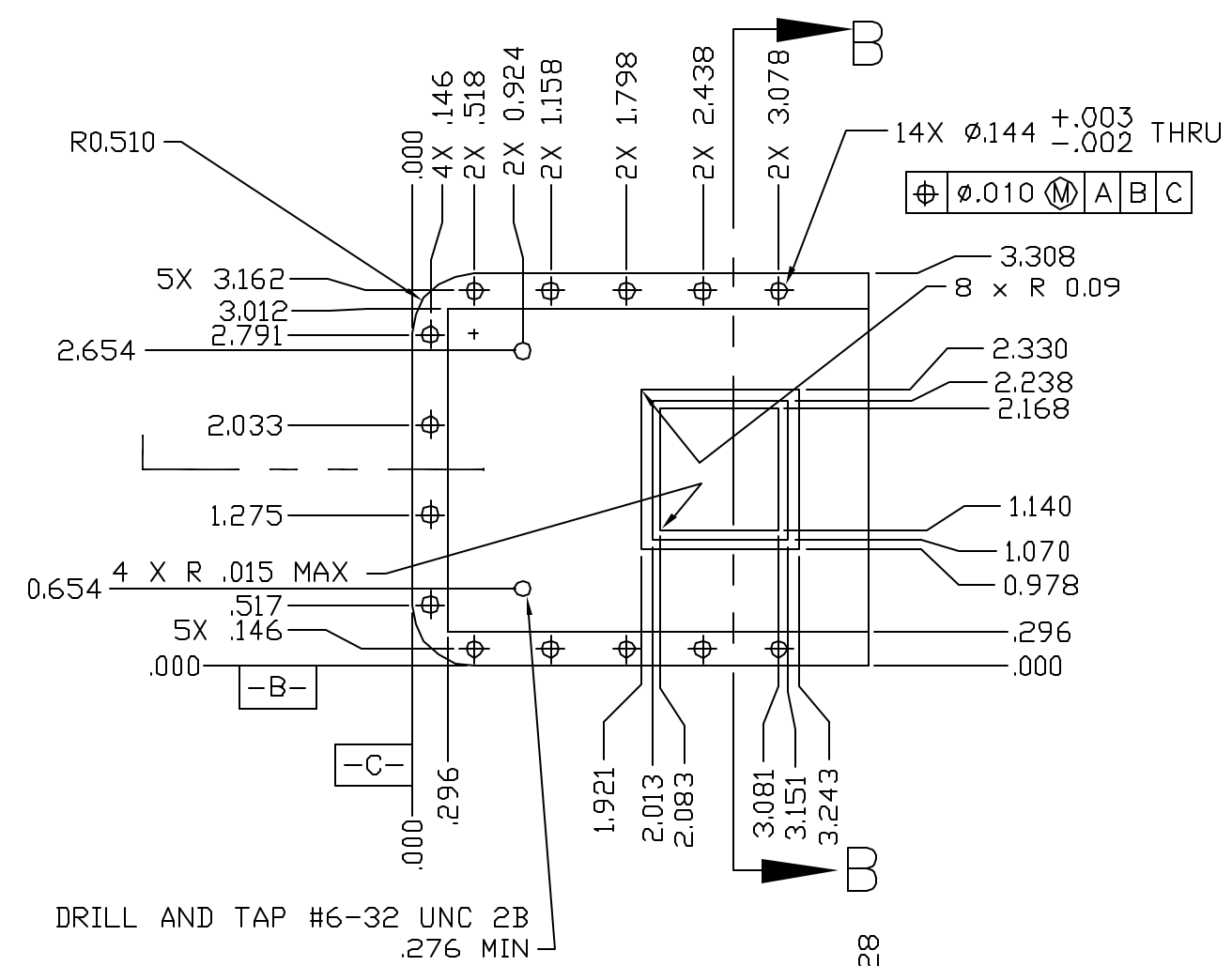


REV.		ECD NO.		DESCRIPTION		REVISIONS		CHECKED	APPROVED	DATE
A	30-025			INITIAL RELEASE (from 30-10400_r06)						



- NOTES:
1. MATERIAL: ALUMINUM ALLOY 6061-T651 PER QQ-A-250/11.
 2. REMOVE ALL BURRS AND SHARP EDGES R.005-.010 .
 3. UNTOLERANCED DIMENSIONS LOCATING TRUE POSITION ARE BASIC.
 4. PLATING : ELECTROLESS NICKEL PLATE PER ASTM B 733-90, SC1, TYPE-I, CLASS 4, AIMg1Si0.6/NiP 5, 200 \pm 50 MICRO INCHES THICK. MINIMUM PHOSPHORUS CONTENT OF THE NICKEL DEPOSIT SHALL BE 8%. OVERPLATE GOLD PER MIL-G-45204 TYPE-III, GRADE A, 25-50 MICRO INCHES THICK.
 5. CLEAN AND HANDLE IN ACCORDANCE WITH 30-01303.
 6. ALL FILLETS TO BE RADIUS .005-.010.

UNLESS OTHERWISE SPECIFIED: DIMENSIONS SHALL BE INTERPRETED IAW ANSI Y14.5 - 1982 DIMENSIONS ARE IN INCHES TOLERANCE: ANGLES \pm 1' 3 PLACE DECIMALS \pm .005 2 PLACE DECIMALS \pm .01 THIRD ANGLE PROJECTION		MASSACHUSETTS INSTITUTE OF TECHNOLOGY CENTER FOR SPACE RESEARCH CAMBRIDGE, MA 02139	
DRAWN		NAME	
CHECKED		DATE	
APPROVED			
RELEASED			
WEIGHT			
SCALE 1:1		SHEET 1 OF 1	
SIZE CODE D		DWG. NO. 30-10400	
REV. A			