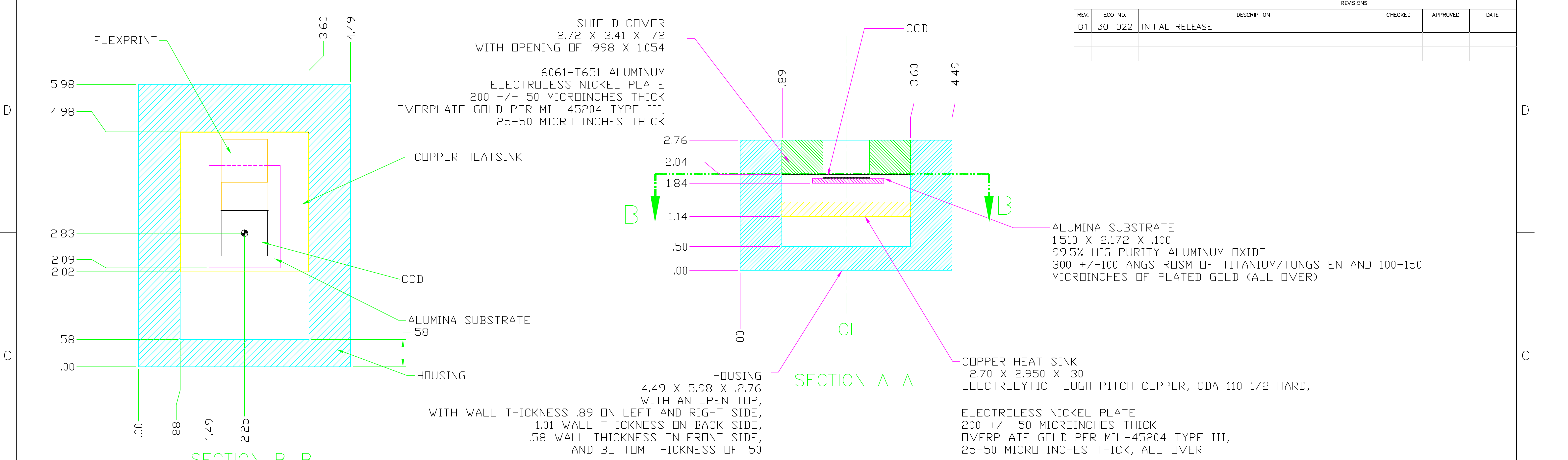


REVISIONS					
REV.	ECO NO.	DESCRIPTION	CHECKED	APPROVED	DATE
D1	30-022	INITIAL RELEASE			



SHIELD COVER
2.72 X 3.41 X .72
WITH OPENING OF .998 X 1.054

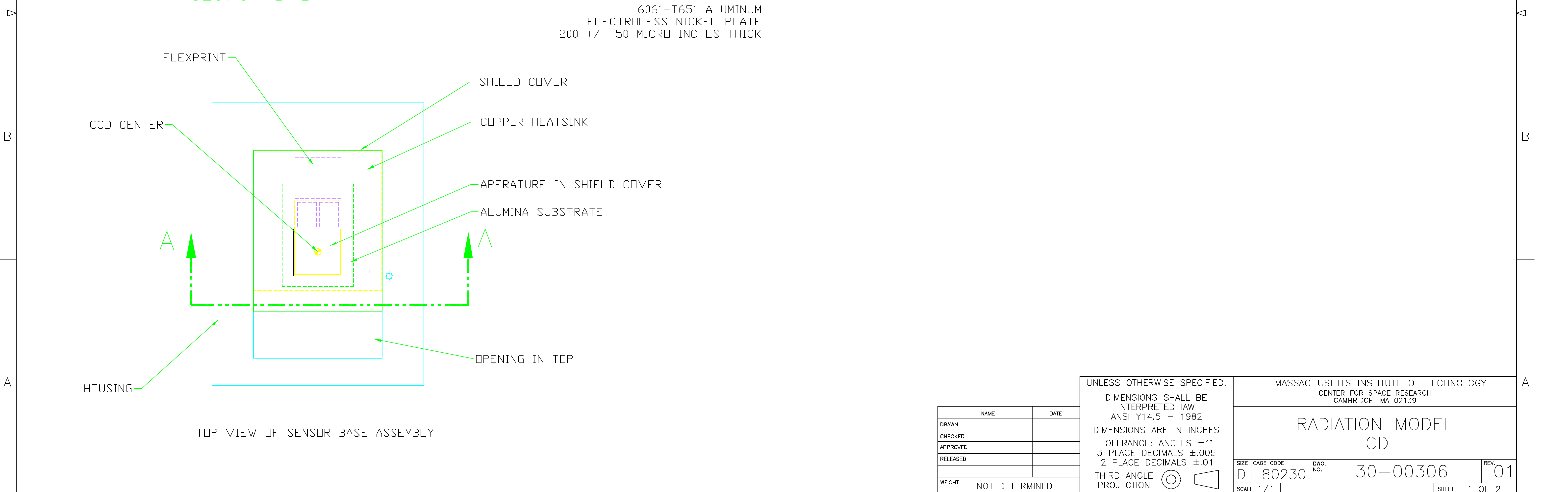
6061-T651 ALUMINUM
ELECTROLESS NICKEL PLATE
200 +/- 50 MICROINCHES THICK
OVERPLATE GOLD PER MIL-45204 TYPE III,
25-50 MICRO INCHES THICK

ALUMINA SUBSTRATE
1.510 X 2.172 X .100
99.5% HIGH PURITY ALUMINUM OXIDE
300 +/- 100 ANGSTROMS OF TITANIUM/TUNGSTEN AND 100-150
MICROINCHES OF PLATED GOLD (ALL OVER)

HOUSING
4.49 X 5.98 X .276
WITH AN OPEN TOP,
WITH WALL THICKNESS .89 ON LEFT AND RIGHT SIDE,
1.01 WALL THICKNESS ON BACK SIDE,
.58 WALL THICKNESS ON FRONT SIDE,
AND BOTTOM THICKNESS OF .50

COPPER HEAT SINK
2.70 X 2.950 X .30
ELECTROLYTIC TOUGH PITCH COPPER, CDA 110 1/2 HARD,
ELECTROLESS NICKEL PLATE
200 +/- 50 MICROINCHES THICK
OVERPLATE GOLD PER MIL-45204 TYPE III,
25-50 MICRO INCHES THICK, ALL OVER

6061-T651 ALUMINUM
ELECTROLESS NICKEL PLATE
200 +/- 50 MICRO INCHES THICK



NAME	DATE
DRAWN	
CHECKED	
APPROVED	
RELEASED	
WEIGHT	NOT DETERMINED

UNLESS OTHERWISE SPECIFIED:
DIMENSIONS SHALL BE INTERPRETED IAW ANSI Y14.5 - 1982
DIMENSIONS ARE IN INCHES
TOLERANCE: ANGLES ± 1°
3 PLACE DECIMALS ± .005
2 PLACE DECIMALS ± .01
THIRD ANGLE PROJECTION

MASSACHUSETTS INSTITUTE OF TECHNOLOGY
CENTER FOR SPACE RESEARCH
CAMBRIDGE, MA 02139

**RADIATION MODEL
ICD**

SIZE	CAGE CODE	DWG. NO.	REV.
D	80230	30-00306	01
SCALE 1/1		SHEET 1 OF 2	