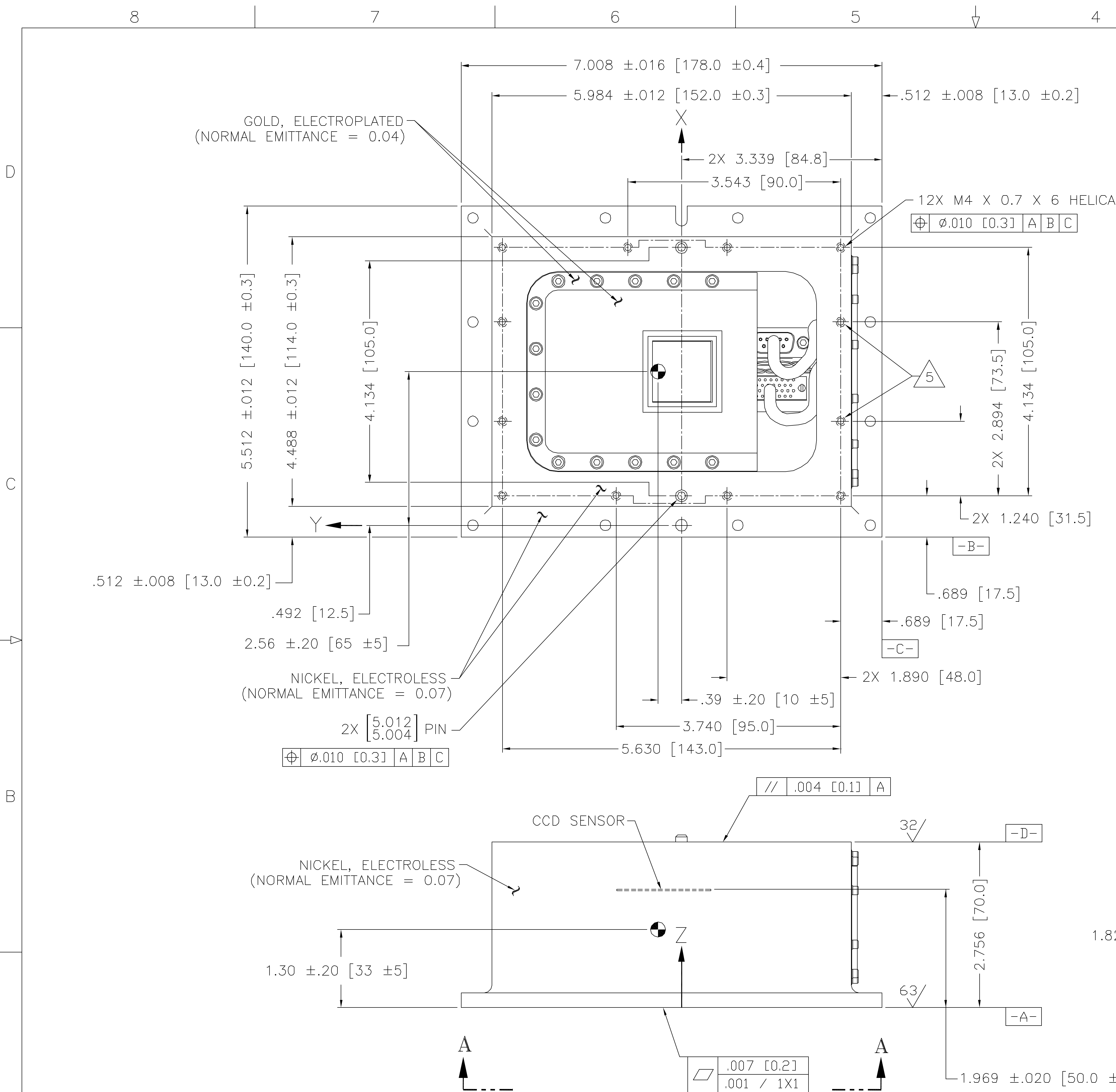
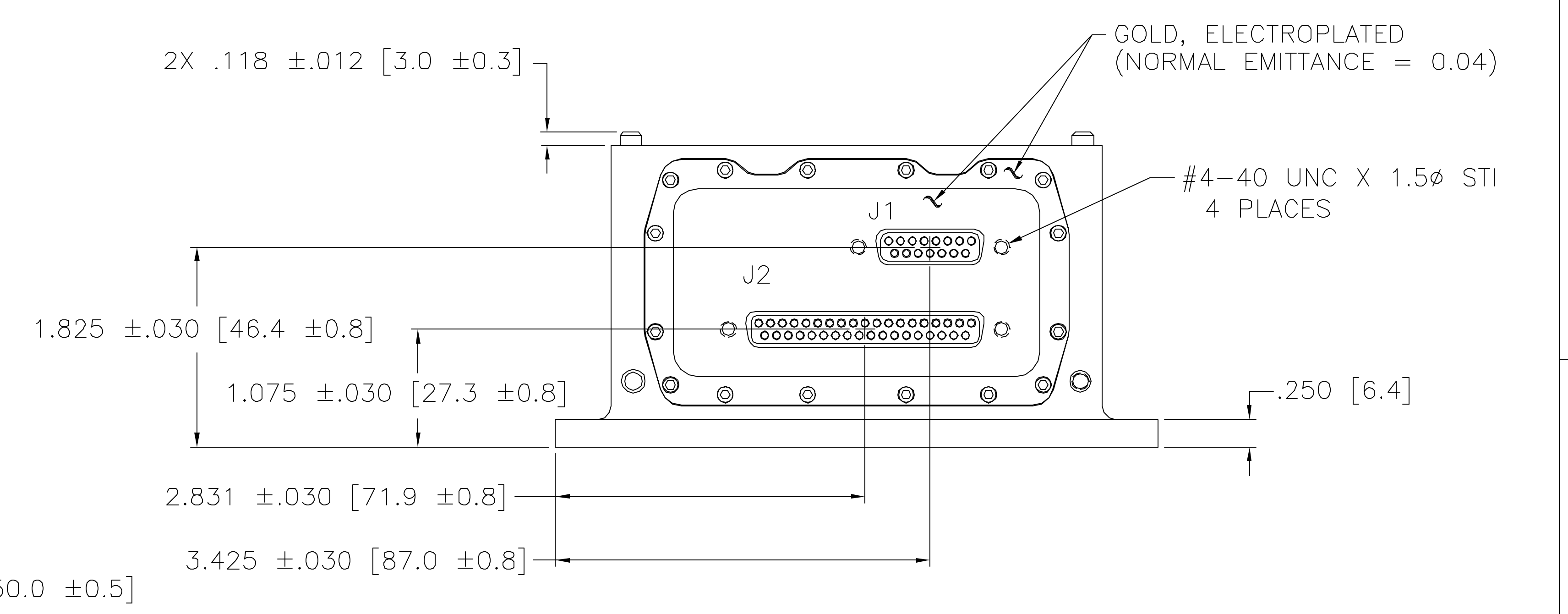


REV.		ECO NO.	DESCRIPTION	REVISIONS		
CHECKED	APPROVED	DATE				
A		30-068	INITIAL RELEASE			



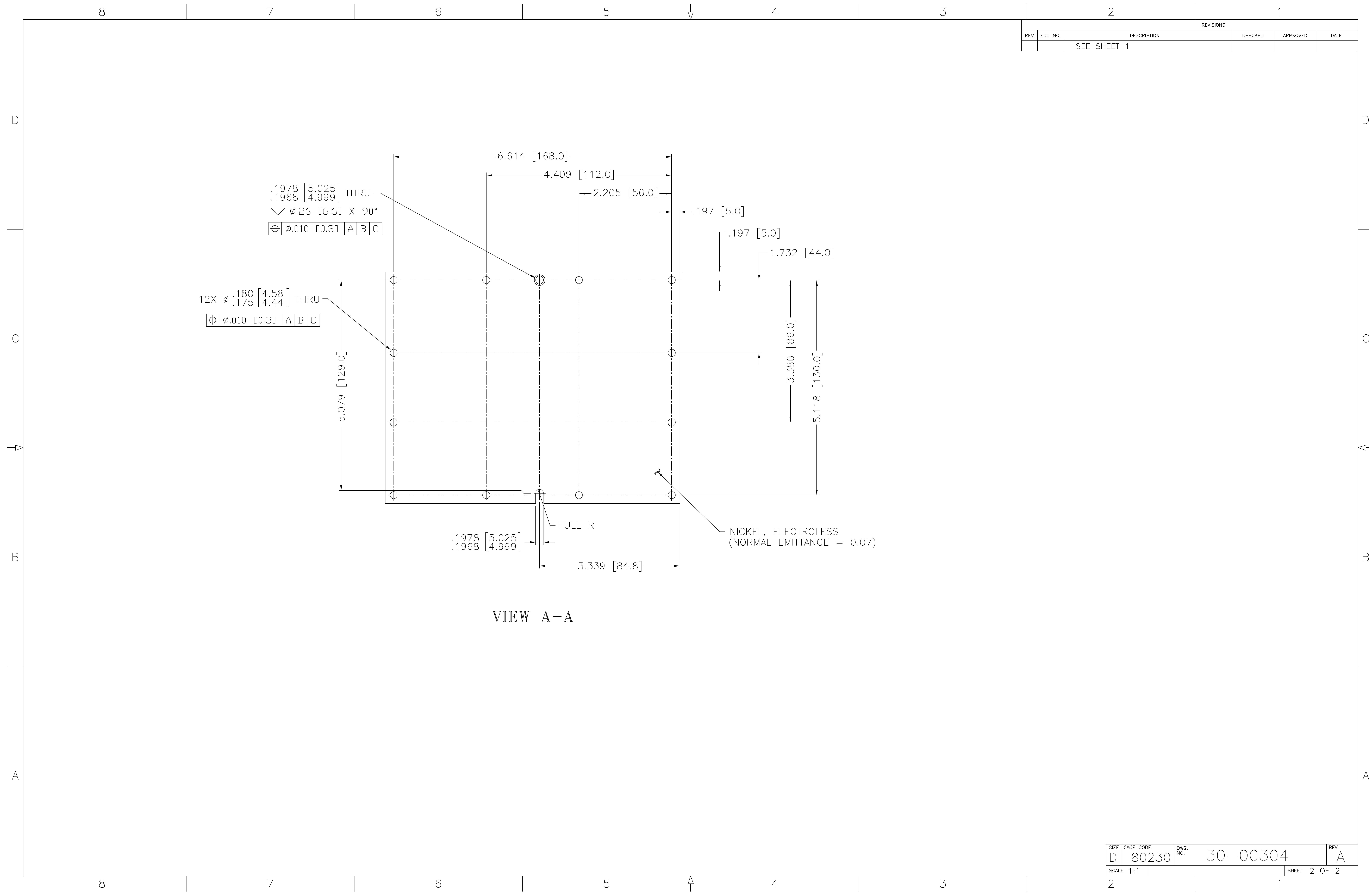
MASS PROPERTIES	
MOMENTS OF INERTIA	X: 1.2e5 ±0.2e5 gram cm squared
	Y: 2.3e5 ±0.5e5 gram cm squared
	Z: 2.5e5 ±0.5e6 gram cm squared



- NOTES:
- DIMENSIONS ARE SHOWN IN INCHES [MILLIMETERS].
  - UNTOLERANCED DIMENSIONS LOCATING TRUE POSITION ARE BASIC.
  - SURFACE TEXTURE SPECIFICATIONS SHALL BE INTERPRETED IAW ANSI Y14.36.
  - 12.1mm MAXIMUM LENGTH OF ENGAGING SCREW BELOW SURFACE D, EXCEPT AS NOTED.
  - 6.47mm MAXIMUM LENGTH OF ENGAGING SCREW BELOW SURFACE D.
  - HEAT CAPACITY 2700-3100 J/°C

UNLESS OTHERWISE SPECIFIED: DIMENSIONS SHALL BE INTERPRETED IAW ANSI Y14.5 - 1982 DIMENSIONS ARE IN INCHES TOLERANCE: ANGLES ±1° 3 PLACE DECIMALS ±.005 2 PLACE DECIMALS ±.01 THIRD ANGLE PROJECTION		MASSACHUSETTS INSTITUTE OF TECHNOLOGY CENTER FOR SPACE RESEARCH CAMBRIDGE, MA 02139	
DRAWN CHECKED APPROVED RELEASED		MIGD, SENSOR BASE	
WEIGHT 6.2-6.8 LB [2.8-3.1 KG]		SIZE D 80230	DWG. NO. 30-00304
		SCALE 1:1	REV. A SHEET 1 OF 2

REV.		ECO NO.		DESCRIPTION		REVISIONS		CHECKED	APPROVED	DATE
				SEE SHEET 1						



SIZE	CAGE CODE	DWG. NO.	REV.
D	80230	30-00304	A
SCALE	SHEET		OF
1:1	2		1