

99ERG04a

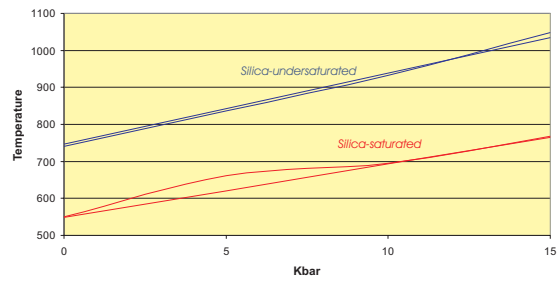


Figure 5. Temperatures calculated for 99ERG04a using the Holland and Blundy (1994) hornblende-plagioclase thermometers. Results indicative of disequilibrium.



Figure 9. 99ERG04a in BSE. Yellow crosses indicate points used for thermometry.

91-543

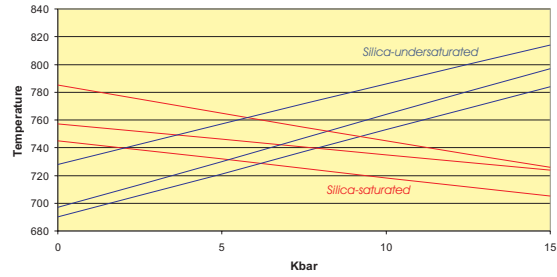


Figure 6. Temperatures calculated for 91-543 using the Holland and Blundy (1994) hornblende-plagioclase thermometers. Results above 5 kbar indicative of disequilibrium.

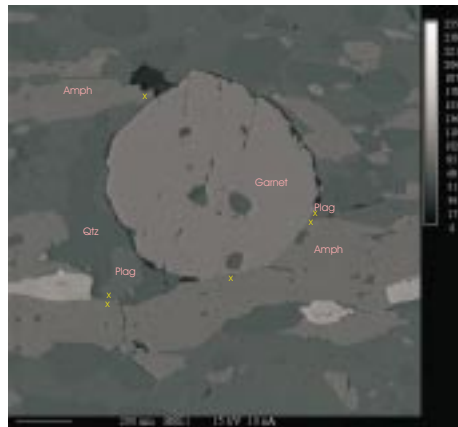


Figure 10. 99ERG07c in BSE. Yellow crosses indicate points used for thermometry.

00ERG06a

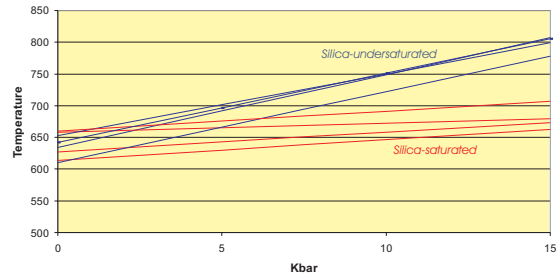


Figure 7. Temperatures calculated for 00ERG06a using the Holland and Blundy (1994) hornblende-plagioclase thermometers. Disequilibrium is indicated by the results above 0kbar.

99ERG07c

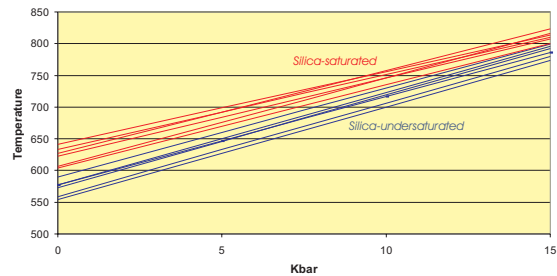


Figure 8. Temperatures calculated for 99ERG07c using the Holland and Blundy (1994) hornblende-plagioclase thermometers.

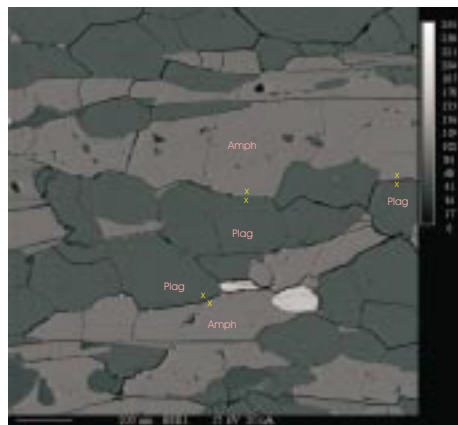


Figure 11. 99ERG07c in BSE. Yellow crosses indicate points used for thermometry.

Hb-PI at 5 kbar

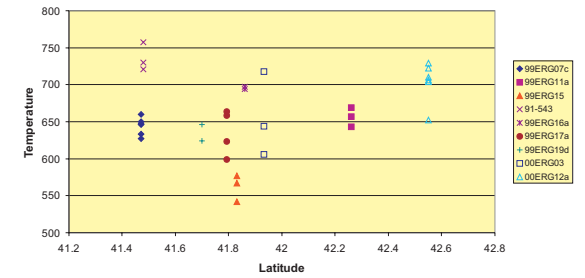


Figure 12. Holland and Blundy (1994) results for 5 kbar.

Hb-PI at 10 kbar

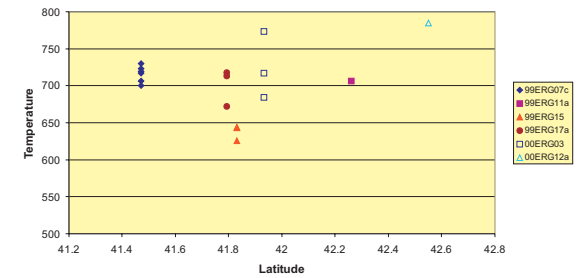


Figure 13. Holland and Blundy (1994) results for 10 kbar.